



بانچي قندودوق دان قرومهن  
**BANCI PENDUDUK  
dan PERUMAHAN 2021**  
*Pastikan awda dihitung untuk masa depan kitani*

**INSIGHTS INTO  
THE POPULATION AND HOUSING CENSUS (BPP) 2021  
PERSONS WITH DISABILITY**



JABATAN PERANCANGAN EKONOMI DAN STATISTIK  
KEMENTERIAN KEWANGAN DAN EKONOMI  
NEGARA BRUNEI DARUSSALAM

DEPARTMENT OF ECONOMIC PLANNING AND STATISTICS  
MINISTRY OF FINANCE AND ECONOMY  
BRUNEI DARUSSALAM



[deps.mofe.gov.bn](https://deps.mofe.gov.bn)



[www.brucensus.gov.bn](https://www.brucensus.gov.bn)



[@statistics.jpes](https://www.instagram.com/statistics.jpes)

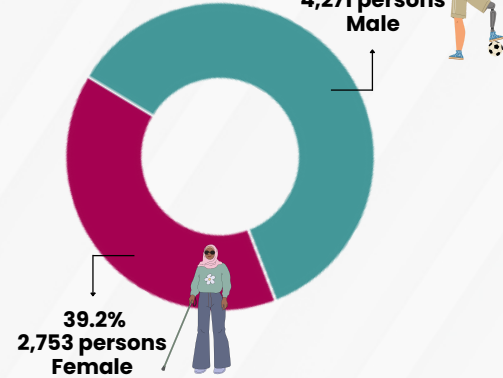


# PERSONS WITH DISABILITY

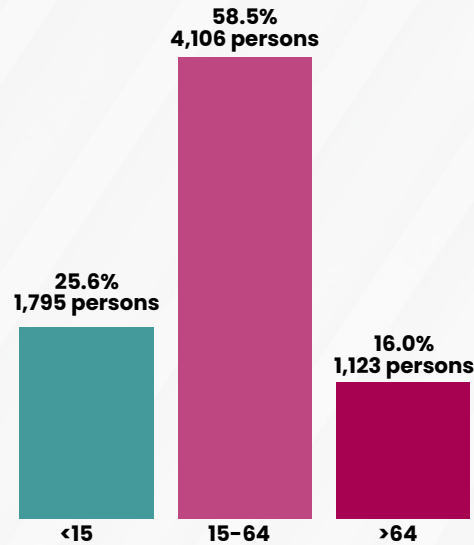
Total persons with disability

**7,024** Persons

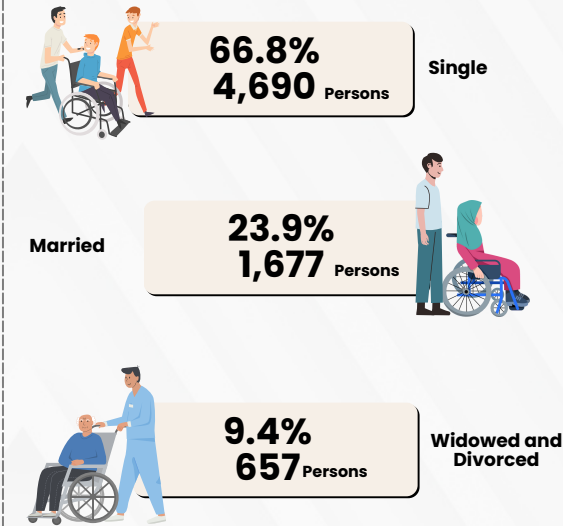
Sex



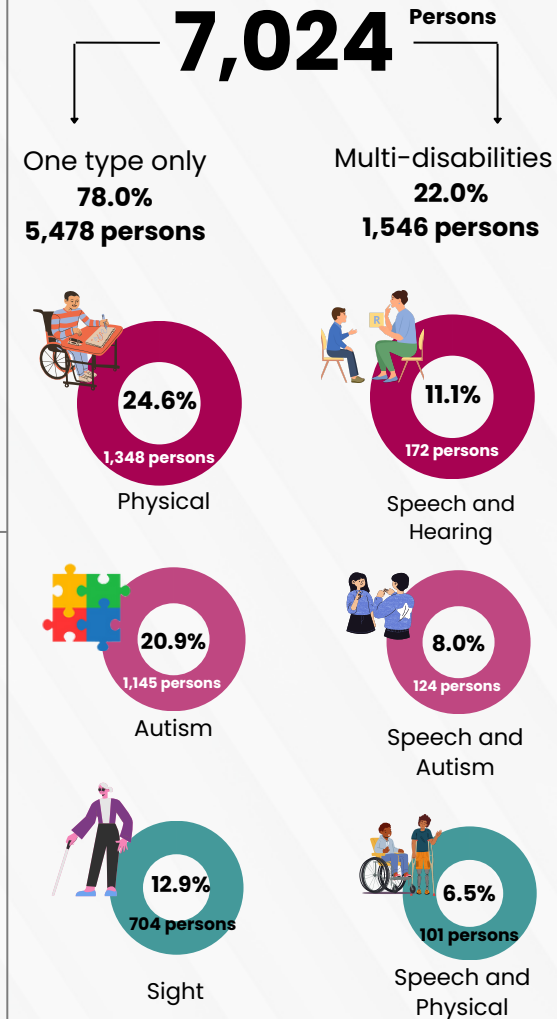
Age Group



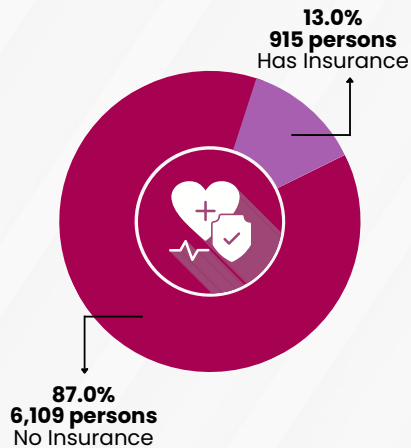
Marital Status



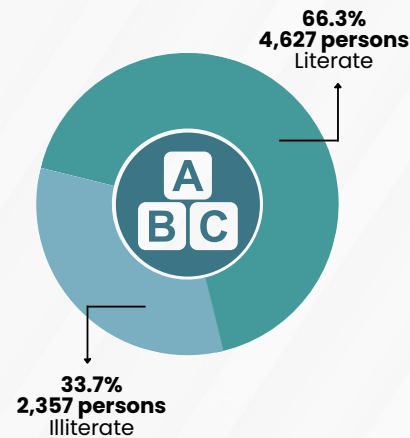
Top 3 Types of Disabilities



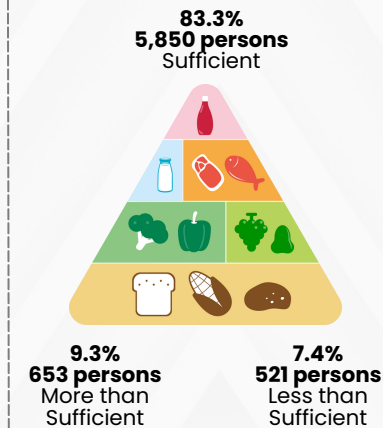
With insurance coverage



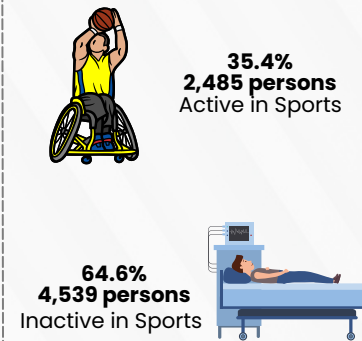
Literacy (Aged 3+)



Having healthy food consumption



Active in sports activity



**Disability** information collected is based on the Washington Group on Disability Statistics as recommended by United Nations Statistics Division. Disability is defined as:

- person who is disabled or has difficulties performing activities or actions that require physical ability or specific functions
- the information acquired is self-reported by household members

One type disability refers to a person having only one type of disability.

Multi-disabilities refers to those who have more than one disabilities.



## Executive Summary

The Department of Economic Planning and Statistics (JPES) has conducted the **Population and Housing Census (BPP) 2021** starting from January until December 2021. BPP 2021 was the sixth such census conducted in Brunei Darussalam. The earlier censuses were conducted in 1971, 1981, 1991, 2001 and 2011. BPP 2021 covered all housing units and households in Brunei Darussalam. It was conducted on a *de jure* basis, whereby all persons, whether Brunei Darussalam citizens, permanent residents or temporary residents who had stayed or intended to stay as usual members of the household for a period of 6 months or more in 2021, were enumerated according to their usual place of residence.

The census collected a wide range of information about the demographic, social, economic and housing characteristics of Brunei Darussalam's population. Apart from providing a comprehensive profile of the population, the 2021 census data can be compared with similar information from the previous censuses to show how the conditions of the population have changed over time.

Disability information collected from the Population and Housing Census (BPP) 2021 summarizes the profile of the person with disability or disabilities. Person with disability refers to a person who is disabled or has difficulties performing activities or actions that require physical ability or specific functions. During BPP 2021, the information acquired is self-reported by household members. The disability questions are based on the Washington Group on Disability Statistics as recommended by United Nations Statistics Division.

### Persons with Disability

In the 2021 Census, the total population of Brunei Darussalam was 440,715 persons. About 1.6 per cent or 7,024 persons have at least one disability. Among them, 60.8 per cent or 4,271 persons were male and 39.2 per cent or 2,753 persons were female.

### Age Distribution

From the age distribution aspect, about 58.5 per cent (4,106 persons) were in the age group of 15-64 years. The remaining 25.6 per cent (1,795 persons) were below 15 years of age while 16.0 per cent (1,123 persons) were 65 years and over.



## **Marital Status**

*Among the persons with disability, more than half (66.8 per cent or 4,690 persons) were single, while 23.9 per cent (1,677 persons) were married. The remaining 6.8 per cent (478 persons) were widowed and 2.5 per cent (179 persons) were divorced.*

## **Types of Disabilities**

*Persons with disability can be grouped into two; those with one disability only and those with multiple disabilities (multi-disabilities). Out of the 7,024 persons with at least one disability, persons with one disability only make up for the majority with 78.0 per cent (5,478 persons) while the remaining 22.0 per cent (1,546 persons) are persons with multi-disabilities.*

*Out of the 5,478 persons with one disability only, the three disabilities with the highest shares are physical only with 24.6 per cent (1,348 persons) followed by autism only with 20.9 per cent (1,145 persons) and Sight only with 12.9 per cent (704 persons).*

*Out of the 1,546 persons with multi-disabilities, 11.1 per cent (172 persons) were speech and hearing, 8.0 per cent (124 persons) were speech and autism, and 6.5 per cent (101 persons) were speech and physical.*

*Out of the 7,024 persons with disabilities:*

- *915 persons (13.0 per cent) were covered by insurance.*
- *4,627 persons (66.3 per cent) of persons aged 3 years and above can read and write with understanding.*
- *5,850 persons (83.3 per cent) ate a healthy, balanced diet to maintain good health.*
- *2,485 persons (35.4 per cent) were physically active in sports in the last six months.*



Indicator	Total		Male		Female	
	Number	Percentage	Number	Percentage	Number	Percentage
<b>Persons with disability</b>	<b>7,024</b>	<b>100.0</b>	<b>4,271</b>	<b>60.8</b>	<b>2,753</b>	<b>39.2</b>
<b>By Age Group</b>						
00-14	1,795	25.6	1,327	31.1	468	17.0
15-64	4,106	58.5	2,413	56.5	1,693	61.5
65+	1,123	16.0	531	12.4	592	21.5
<b>By Marital Status</b>						
Single	4,690	66.8	3,061	71.7	1,629	59.2
Married	1,677	23.9	1,017	23.8	660	24.0
Divorced	179	2.5	73	1.7	106	3.9
Widowed	478	6.8	120	2.8	358	13.0
<b>By Type of disabilities</b>						
Sight only	704	10.0	352	8.2	352	12.8
Hearing only	491	7.0	273	6.4	218	7.9
Speech only	365	5.2	246	5.8	119	4.3
Physical only	1,348	19.2	710	16.6	638	23.2
Mentally disordered only	540	7.7	298	7.0	242	8.8
Slow learner only	350	5.0	232	5.4	118	4.3
Autism only	1,145	16.3	922	21.6	223	8.1
Down syndrome only	305	4.3	166	3.9	139	5.0
Others only	230	3.3	135	3.2	95	3.5
Multi-disabilities	1,546	22.0	937	21.9	609	22.1
<b>By literacy (Aged 3 years and above)</b>						
Literate	4,627	66.3	2,830	66.7	1,797	65.5
Illiterate	2,357	33.7	1,411	33.3	946	34.5
<b>Having healthy food consumption</b>						
Sufficient	5,850	83.3	3,588	84.0	2,262	82.2
More than sufficient	653	9.3	379	8.9	274	10.0
Less than sufficient	521	7.4	304	7.1	217	7.9
<b>Active in sports activity</b>						
Active in Sports	2,485	35.4	1,661	38.9	824	29.9
Inactive in Sports	4,539	64.6	2,610	61.1	1,929	70.1
<b>With insurance coverage</b>						
Has Insurance	915	13.0	605	14.2	310	11.3
No Insurance	6,109	87.0	3,666	85.8	2,443	88.7



## Technical Note

### Introduction

*Population and Housing Census (BPP) is a data collection project to count the number of population as well as the households and housing units in a country and provides a statistical profile of the population and households.*

*The Department of Economic Planning and Statistics (JPES) has conducted the **Population and Housing Census (BPP) 2021** starting from January until December 2021. BPP 2021 was the sixth such census conducted in Brunei Darussalam. The earlier censuses were conducted in 1971, 1981, 1991, 2001 and 2011. In 2016, JPES has conducted the Population and Housing Census Update (KBPP) 2016 for Brunei Darussalam.*

*BPP 2021 was conducted under the Census Act, Chapter 78 from the Laws of Brunei Darussalam. The Census Act makes it obligatory for the public to answer all the census questions and guarantees the confidentiality of information furnished.*

### Objectives

*The main objectives of BPP 2021 were to collect comprehensive and latest information on the total count as well as demographic, social and economic characteristics of the population; and to collect comprehensive and latest information on the total number of housing units with housing characteristics and availability of household amenities.*

### Census Approach and Coverage

*The Population and Housing Census (BPP) 2021 covered all housing units and households in Brunei Darussalam. It was conducted on a de jure basis, whereby all persons, whether Brunei Darussalam Citizens, Permanent Residents or Temporary Residents who had stayed or intended to stay as usual members of the household for a period of 6 months or more in 2021, were enumerated according to their usual place of residence.*



## Methodology

The census was conducted in three stages:

**i) First Stage (Houselisting):**

The first stage was conducted from 20 January until 21 February 2021. During this stage, all housing units were listed by kampung or area, mukim and district throughout the country to ensure full coverage of the census. Census officers collected information on every households such as the names and identity card numbers of head and each household members living in each housing unit. Census officers also affix a sticker to each housing unit.

**ii) Second Stage (e-Census Implementation):**

The second stage was conducted from 20 April 2021 until 21 July 2021. During this stage, the e-Census system were activated to allow the public to fill in the census questionnaire online. More detailed information from each household member was collected in this stage covering personal information such as date of birth, education and employment characteristics.

**iii) Third Stage (Household Interview):**

The third stage was initially scheduled to be implemented from 2 August 2021 to 29 August 2021. Following the COVID-19 situation in the country, the third stage: face-to-face interviews, has been revised and implemented from 1 November to 31 December 2021 using the following two methods:

1. Telephone Call Interview: The appointed census officers interviewed the households without visiting their housing units. The head of the household was contacted to set up an appointment before the telephone interview is held.
2. Fill in the census form themselves online: The e-Census method is only accessible to households that have an internet connection and choose to fill in the census questionnaire themselves online, including filling out the questionnaire in softcopy form and sending it via email.



## Concepts and Definitions

*The following are some concepts and definitions used in Population and Housing Census (BPP) 2021:*

**District:**

*Brunei Darussalam is divided into four districts namely Brunei Muara, Belait, Tutong and Temburong.*

**Mukim:**

*Each district is divided into several mukims and in each mukim there are a number of kampung or villages. Usually, a mukim is headed by a Penghulu and a kampung or village is headed by a Ketua Kampung.*

**Kampung:**

*A Mukim is divided into several kampung or villages with a Ketua Kampung or Village Headman for each or a group of them depending on the sizes of the kampung.*

**Enumeration Area:**

*Kampung or localities in each mukim were further divided into several enumeration areas. Each enumeration area comprises one or the entire kampung or locality or part of it. A large kampung or locality might be divided into several enumeration areas.*

**Urban and Rural:**

*Urban areas are defined as those areas which fall under the following categories:*

- i) Municipality areas of Bandar Seri Begawan, Kuala Belait, Seria, Pekan Tutong and Pekan Bangar; and*
- ii) Heavily populated areas with urban characteristics and dependent on the town for employment, education, entertainment, and other facilities.*

*Those areas which do not satisfy the above criteria are considered as rural.*





### **Housing Units:**

*A housing unit is defined as a building or a part of a building which is separated and independent, and is being used or to be used for permanent or temporary living place by one person or more.*

*Separate means that the building structure is physically surrounded or parted by wall, fence, etc.*

*Independent means that there is a direct access to the housing unit and its occupiers can move freely in and out, without necessarily passing through other's housing units.*

### **Households (HH):**

*A household is one person or a group of persons who are related or unrelated living together under one roof and making common provision for food and other essentials of living.*

*The households are categories into two types:*

- i) Private households*
- ii) Institutional households*

### **Head of Households:**

*The head of household is the person generally acknowledged as such by other members of the household. The head is normally the oldest member, the main income earner, the owner-occupier of the house or the person who manages the affairs of the household. For households comprising a group of unrelated persons, the head of household refers to the person who manages the affairs of the household or any responsible person who supplied the information pertaining to the other household members.*

*A local household is a household that is headed by a local (Brunei Citizen and Permanent Resident). Meanwhile, a non-local household is a household that is headed by a Temporary Resident.*



### **Average annual population growth rate**

The average annual population growth rate is calculated as:

$$r = \frac{[\ln(\frac{P_{t+n}}{P_t})]}{n} \times 100$$

where

- r* is the average annual population growth rate
- n* is the exact number of years between year *t* and year *t+n*
- P<sub>t</sub>* is the population at the year *t*
- P<sub>t+n</sub>* is the population at the year *t+n*
- ln* is the natural logarithm

### **Sex ratio:**

The sex ratio is the number of males per 100 females.

### **Average household size:**

The average household size is the number of persons per household and is calculated as:

$$\frac{\text{Number of Persons}}{\text{Number of Households}}$$

### **Population density:**

The density of persons per square kilometre is the ratio of the population of a given area to the number of square kilometres in the same area.

### **Residential Status:**

Residential Status is the status of the person in relation to the immigration laws of the country.

The categories of residential status are:

- i) Brunei citizen, i.e. holder of yellow identity card;
- ii) Permanent resident, i.e. holder of purple identity card; and
- iii) Temporary resident, i.e. holder of green identity card.

### **Median Age:**

The median age of a population is that age that divides a population into two groups of the same size, such that half the total population is younger than this age, and the other half older.



**Race:**

*Brunei Malay consists of the persons belonging to one of the following ethnic groups of the Malay race, namely Brunei, Tutong, Belait, Kedayan, Dusun, Bisaya or Murut. Other Malay refers to the Malay race other than the Brunei Malay.*

*Chinese refers to all persons who belong to the Chinese ethnic group, while Others consists of the rest of the population not included in the Malay and Chinese racial groups.*

**Religion:**

*Religion is defined as the religious or spiritual belief or preference of the person. The categories of religion used in the census are:*

- i) Islam*
- ii) Christianity*
- iii) Buddhism*
- iv) Hinduism*
- v) Others*

*The other religions, unstated faiths and no religious beliefs were grouped into “Others”.*

**Marital Status:**

*Marital Status is the status of the person in relation to the marriage laws or custom of Brunei Darussalam. The categories of the marital status are:*

- i) Single*
- ii) Married*
- iii) Divorced*
- iv) Widowed*

**Country of Birth:**

*The country of birth is the country in which the person was born. It should be noted that the place or country of birth is not necessarily related to nationality, which is a separate topic.*

**Nationality:**

*Nationality is the legal nationality of the person. A person with a yellow Brunei Darussalam identity card is automatically a citizen of Brunei Darussalam.*



**Disability:**

*Disability information collected is based on the Washington Group on Disability Statistics as recommended by United Nations Statistics Division. Disability is defined as:*

- i) person who is disabled or has difficulties performing activities or actions that require physical ability or specific functions.*
- ii) the information acquired is self-reported by household members.*

**Type of disability:**

- i) One only refers to a person having only one type of disability.*
- ii) Multi-disabilities refers to a person with multiple disabilities that have two or more areas of significant impairment, one of which shall be an intellectual disability.*

**Persons with disability who are literate:**

*Refers to disabled persons aged 3 years and above who are able to read or write with understanding a simple letter.*

**Persons with disability having healthy food consumption:**

*Refers to disabled persons who consume a healthy, balanced diet to maintain good health based on self-report by the respondents themselves.*

**Persons with disability who are active in sports activity:**

*Refers to disabled persons who are involved in physical exertion and skill as the primary focus of the activity such as walking, running, etc.*

**Persons with disability with insurance coverage:**

*Refers to disabled persons who are covered by insurance to protect against risks and financial losses.*