



# BRUNEI DARUSSALAM KEY INDICATORS 2022



Department of Statistics  
Department of Economic Planning and Statistics  
Ministry of Finance and Economy  
Brunei Darussalam

# BRUNEI DARUSSALAM KEY INDICATORS 2022

**Perpustakaan Dewan Bahasa dan Pustaka Brunei  
Pengkatalogan Data-dalam-penerbitan**

BRUNEI Darussalam Key Indicators 2022. --Bandar Seri Begawan :  
Department of Statistics, Department of Economic Planning and  
Statistics, Ministry of Finance and Economy, 2023.

80pages. 10.16cm x 13.46cm.

ISBN 978-99917-72-44-8 (paperback)

ISBN 978-99917-72-45-5 (e-book edition)

1. Economic indicators--Brunei Darussalam--Statistics--Periodicals
  2. Brunei Darussalam--Economic conditions--Statistics--Periodicals
- I. Jabatan Perancangan Ekonomi dan Statistik

330.905955 BRU (DDC 23)



**DEPARTMENT OF STATISTICS  
DEPARTMENT OF ECONOMIC PLANNING AND STATISTICS  
MINISTRY OF FINANCE AND ECONOMY  
BRUNEI DARUSSALAM**

## TABLE OF CONTENTS:

	<i>PAGE</i>
<b>INFOGRAPHICS</b>	i - vi
<b>1) POPULATION</b>	1 - 3
<b>2) LABOUR FORCE</b>	4 - 5
<b>3) VITAL STATISTICS</b>	6 - 9
<b>4) GROSS DOMESTIC PRODUCT</b>	10 - 28
<b>5) INTERNATIONAL MERCHANDISE TRADE STATISTICS</b>	29 - 36
<b>6) FOREIGN DIRECT INVESTMENT</b>	37 - 40
<b>7) CONSUMER PRICE INDEX</b>	41 - 42
<b>8) INTERNATIONAL MERCHANDISE TRADE INDEX</b>	43 - 49
<b>9) OIL AND GAS</b>	50 - 51
<b>10) BANKING AND FINANCE</b>	52 - 56

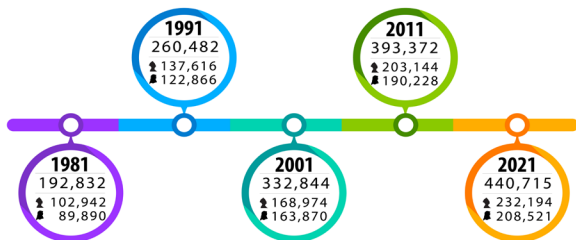
## TABLE OF CONTENTS:

	<i>PAGE</i>
<b>11) GOVERNMENT FINANCE</b>	57 - 58
<b>12) EDUCATION</b>	59 - 62
<b>13) HEALTH</b>	63 - 64
<b>14) TRANSPORT</b>	65 - 67
<b>15) COMMUNICATION</b>	68 - 69
<b>16) UTILITIES</b>	70
<b>17) PRIMARY SECTOR</b>	71 - 75
<b>18) MISCELLANEOUS</b>	76 - 78
<b>19) NOTES</b>	79 - 80
<b>20) LIST OF SOURCES</b>	81 - 83
<b>21) ENQUIRIES</b>	84



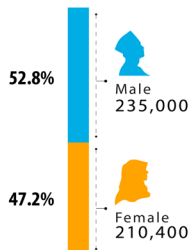
# POPULATION 2022

## POPULATION TREND 1981 - 2022

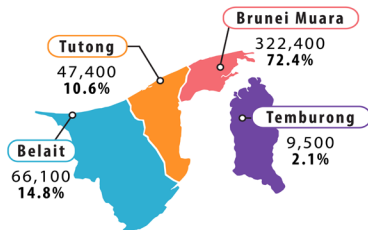


TOTAL POPULATION 2022 : 445,400  
ANNUAL GROWTH RATE : 1.1%

## POPULATION BY GENDER



## POPULATION BY DISTRICTS

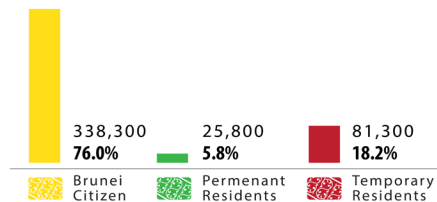


Land Area: 5,765 sq. km  
Population Density: 77.3 persons per sq. km

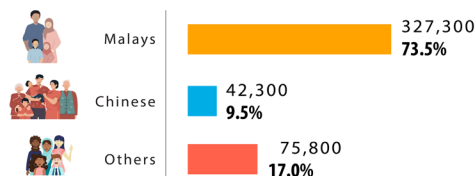


# POPULATION 2022

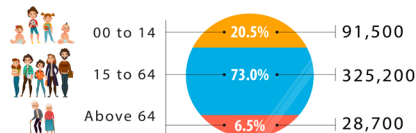
## POPULATION BY RESIDENTIAL STATUS



## POPULATION BY RACE



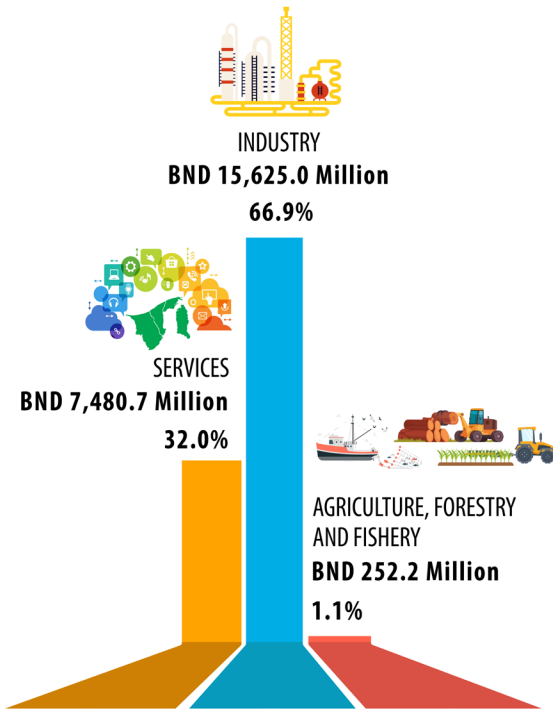
## POPULATION BY AGE GROUP



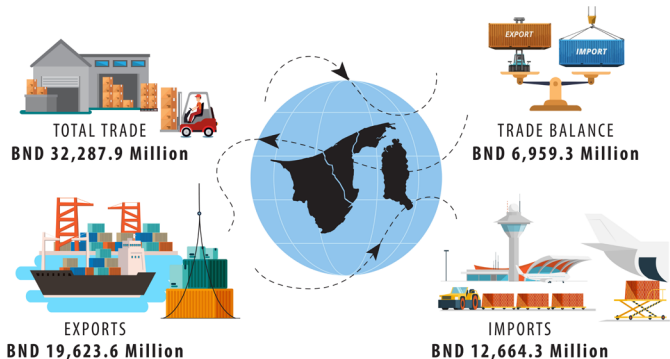


# GROSS DOMESTIC PRODUCT 2022

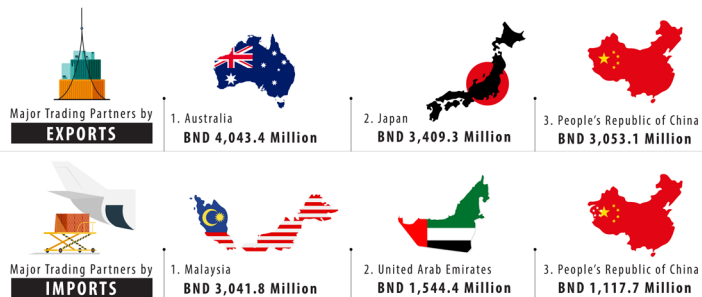
By Economic Activities at Current Prices



# INTERNATIONAL MERCHANDISE TRADE STATISTICS 2022

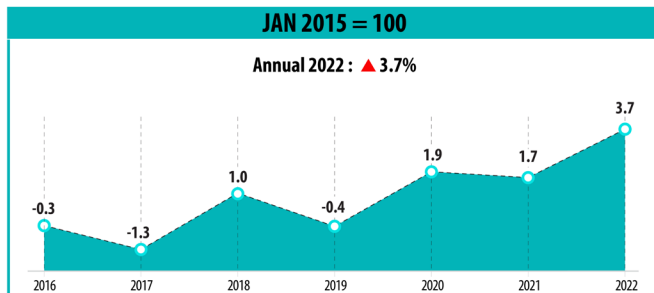


## MAJOR TRADING PARTNERS





## CONSUMER PRICE INDEX 2022



ALL GROUP (INDEX)	Jan-Dec 2021	Jan-Dec 2022	Change (%)
Overall Index	102.7	106.4	▲ 3.7
Food and Non-Alcoholic Beverages	106.8	112.3	▲ 5.1
Clothing and Footwear	99.5	100.7	▲ 1.2
Housing, Water, Electricity, Gas and Other Fuels	93.0	94.8	▲ 2.0
Furnishings, Household Equipment and Routine Household Maintenance	100.5	101.4	▲ 0.9
Health	102.5	102.7	▲ 0.1
Transport	101.3	106.1	▲ 4.8
Communication	100.1	99.0	▼ -1.1
Recreation and Culture	103.8	105.2	▲ 1.4
Education	105.3	105.3	▼ -0.01
Restaurants and Hotels	104.5	106.8	▲ 2.2
Miscellaneous Goods and Services	110.5	126.0	▲ 14.1



## CONSUMER PRICE INDEX 2022

### MAIN CONTRIBUTORS (PERIOD-ON-PERIOD)

<b>FOOD</b>		▲ 5.1%
Meat		▲ 10.7%
Oil and Fats		▲ 21.8%
Fish and Seafood		▲ 5.4%
<b>NON-FOOD</b>		▲ 3.3%
Miscellaneous Goods and Services		▲ 14.1%
Transport		▲ 4.8%
Restaurants and Hotels		▲ 2.2%



	2020 <sup>r</sup>	2021 <sup>r</sup>	2022
--	-------------------	-------------------	------

<b>Total (Persons)</b>	<b>441,800</b>	<b>440,715</b>	<b>445,400</b>
Male	236,000	232,194	235,000
Female	205,800	208,521	210,400

<b>Annual Growth Rate (%)</b>	<b>-2.0</b>	<b>-0.2</b>	<b>1.1</b>
-------------------------------	-------------	-------------	------------

**Area: 5,765 sq. km**

<b>Population Density</b> (Persons per sq. km)	<b>76.6</b>	<b>76.4</b>	<b>77.3</b>
---	-------------	-------------	-------------

#### Population by District (Persons)

Brunei Muara	319,300	318,530	322,400
Belait	65,700	65,531	66,100
Tutong	47,300	47,210	47,400
Temburong	9,500	9,444	9,500



	2020 <sup>r</sup>	2021 <sup>r</sup>	2022
--	-------------------	-------------------	------

<b>Population by Residential Status (Persons)</b>	<b>441,800</b>	<b>440,715</b>	<b>445,400</b>
Brunei Citizens	332,200	333,669	338,300
Permanent Residents	25,700	25,834	25,800
Temporary Residents	83,900	81,212	81,300

<b>Population by Race (Persons)</b>	<b>441,800</b>	<b>440,715</b>	<b>445,400</b>
Malays	324,000	297,016	327,300
Chinese	42,300	42,132	42,300
Others	75,500	101,567	75,800

## 1

## POPULATION



2020<sup>r</sup> 2021<sup>r</sup> 2022

	2020 <sup>r</sup>	2021 <sup>r</sup>	2022
<b>Population Median Age (Years)</b>	<b>31.2</b>	<b>31.7</b>	<b>32.0</b>
<b>Total Population</b>	<b>441,800</b>	<b>440,715</b>	<b>445,400</b>
<b>0-4</b>	28,600	27,355	27,700
<b>5-9</b>	32,700	31,934	31,600
<b>10-14</b>	30,600	31,087	32,200
<b>15-19</b>	33,000	33,790	32,400
<b>20-24</b>	39,400	37,099	37,100
<b>25-29</b>	42,400	41,106	40,900
<b>30-34</b>	41,700	40,534	40,800
<b>35-39</b>	39,200	38,425	38,900
<b>40-44</b>	35,200	35,463	36,800
<b>45-49</b>	30,600	31,542	31,600
<b>50-54</b>	25,400	26,732	27,600
<b>55-59</b>	19,900	20,937	21,200
<b>60-64</b>	16,400	16,817	17,900
<b>65 and Over</b>	26,700	27,894	28,700

## 2

## LABOUR FORCE



2020<sup>r</sup> 2021<sup>r</sup> 2022

	2020 <sup>r</sup>	2021 <sup>r</sup>	2022
<b>Working Age Population (18-59 Years)</b>	<b>283,021</b>	<b>286,712</b>	<b>282,812</b>
<b>Labour Force (Persons)</b>	<b>219,426</b>	<b>216,686</b>	<b>212,877</b>
Male	133,737	128,615	127,893
Female	85,689	88,070	84,984
<b>Employed (Persons)</b>	<b>203,258</b>	<b>205,857</b>	<b>201,844</b>
Male	125,231	123,529	121,799
Female	78,027	82,328	80,044
<b>Unemployed (Persons)</b>	<b>16,168</b>	<b>10,829</b>	<b>11,034</b>
Male	8,506	5,086	6,093
Female	7,661	5,743	4,940
<b>Labour Force Participation Rate (%)</b>	<b>77.5</b>	<b>75.6</b>	<b>75.3</b>
Male	86.1	83.1	84.1
Female	67.1	66.8	65.0
<b>Unemployment Rate (%)</b>	<b>7.4</b>	<b>5.0</b>	<b>5.2</b>
Male	6.4	4.0	4.8
Female	8.9	6.5	5.8





	2020	2021	2022
<b>Government Employees by Division (Number) <sup>(1)</sup></b>	<b>49,658</b>	<b>45,701</b>	<b>45,440</b>
Division I	1,076	987	1,036
Division II	11,672	11,121	11,229
Division III	11,205	10,360	10,362
Division IV	12,033	11,014	10,910
Division V	13,672	12,219	11,903
<b>Number of Active Members at Employees Trust Fund (Number)</b>	<b>98,405</b>	<b>100,919</b>	<b>107,094</b>
Government	40,076	40,198	42,856
Private	58,329	60,721	64,238



	2020	2021	2022 <sup>P</sup>
<b>Registered Live Births (Persons)</b>	<b>6,498</b>	<b>6,751</b>	<b>6,625</b>
Male	3,391	3,493	3,442
Female	3,107	3,258	3,183
Birth Ratio (Male per 100 Female)	109.1	107.2	108.2
Birth Rate per 1,000 Population	14.7	15.3	14.9
<b>Total Fertility Rate (%)</b>	<b>1.8</b>	<b>1.9</b>	<b>1.9</b>
Brunei Citizens	1.9	2.0	2.0
Permanent Residents	1.8	1.4	1.5
Temporary Residents	1.5	1.5	1.5



	2020	2021	2022 <sup>P</sup>
<b>Life Expectancy at Birth (Years)</b>	<b>77.9</b>	<b>77.6</b>	<b>76.4</b>
Male	77.1	76.3	74.5
Female	78.7	78.9	78.3
<b>Registered Deaths (Number)</b>	<b>1,752</b>	<b>1,865</b>	<b>2,119</b>
Male	982	1,025	1,214
Female	770	840	905
Death Rate per 1,000 Population	4.0	4.2	4.8
Infant Mortality Rate per 1,000 Live Births	8.3	5.9	8.3
Under 5 Mortality Rate per 1,000 Live Births	9.2	7.1	9.1



	2020	2021	2022
<b>Total Marriages (Number)</b>	<b>3,664</b>	<b>2,783</b>	<b>2,824</b>
<b>Marriages by Type</b>			
Muslim	3,464	2,679	2,608
Civil	129	69	156
Customary and Others	71	35	60
<b>Marriages by District</b>			
Brunei Muara	2,566	1,985	1,995
Belait	477	354	395
Tutong	442	321	277
Temburong	116	107	88
Outside Brunei	63	16	69
<b>Median Age at First Marriage (Years)</b>			
Groom	27.1	26.9	26.0
Bride	25.6	25.6	27.1



	2020	2021	2022
<b>Total Divorces (Number)</b>	<b>617</b>	<b>433</b>	<b>588</b>
<b>Divorces by Type</b>			
Muslim	583	397	577
Civil	34	36	11
<b>Divorces by District</b>			
Brunei Muara	414	312	401
BelaIt	105	57	103
Tutong	90	56	66
Temburong	7	7	16
Outside Brunei	1	1	2



	2020	2021	2022
<b>By Sector at Current Prices (BND Million)</b>			
<b>Oil and Gas Sector</b>	<b>7,995.3</b>	<b>9,330.7</b>	<b>12,314.4</b>
<b>Non Oil and Gas Sector</b>	<b>8,867.5</b>	<b>9,789.9</b>	<b>11,043.4</b>
Government Sector	2,902.7	2,968.8	3,061.2
Private Sector	5,964.8	6,821.1	7,982.1
<b>Gross Value Added</b>	<b>16,862.8</b>	<b>19,120.6</b>	<b>23,357.8</b>
Taxes Less Subsidies on Products	-298.4	-298.6	-354.7
<b>Gross Domestic Product</b>	<b>16,564.4</b>	<b>18,822.0</b>	<b>23,003.1</b>
<b>Per Capita at Current Prices (BND)</b>			
	<b>37,493.1</b>	<b>42,707.9</b>	<b>51,645.9</b>
<b>By Sector at Current Prices (% Share)</b>			
<b>Oil and Gas Sector</b>	<b>47.4</b>	<b>48.8</b>	<b>52.7</b>
<b>Non Oil and Gas Sector</b>	<b>52.6</b>	<b>51.2</b>	<b>47.3</b>
Government Sector	17.2	15.5	13.1
Private Sector	35.4	35.7	34.2
<b>Gross Value Added</b>	<b>100.0</b>	<b>100.0</b>	<b>100.0</b>



	2020	2021	2022
--	------	------	------

**By Sector at Constant Prices (BND Million)**

<b>Oil and Gas Sector</b>	<b>10,360.2</b>	<b>9,859.5</b>	<b>9,136.3</b>
<b>Non Oil and Gas Sector</b>	<b>9,319.8</b>	<b>9,507.5</b>	<b>9,915.3</b>
Government Sector	2,892.3	2,934.4	3,031.7
Private Sector	6,427.5	6,573.1	6,883.6

<b>Gross Value Added</b>	<b>19,680.0</b>	<b>19,367.0</b>	<b>19,051.6</b>
--------------------------	-----------------	-----------------	-----------------

Taxes Less Subsidies on Products	-365.0	-359.2	-353.3
----------------------------------	--------	--------	--------

<b>Gross Domestic Product</b>	<b>19,315.0</b>	<b>19,007.8</b>	<b>18,698.2</b>
-------------------------------	-----------------	-----------------	-----------------

**Growth Rate (%) at Constant Prices**

<b>Oil and Gas Sector</b>	<b>-4.9</b>	<b>-4.8</b>	<b>-7.3</b>
<b>Non Oil and Gas Sector</b>	<b>8.9</b>	<b>2.0</b>	<b>4.3</b>
Government Sector	-4.6	1.5	3.3
Private Sector	16.2	2.3	4.7

<b>Gross Value Added</b>	<b>1.1</b>	<b>-1.6</b>	<b>-1.6</b>
--------------------------	------------	-------------	-------------

<b>Gross Domestic Product</b>	<b>1.1</b>	<b>-1.6</b>	<b>-1.6</b>
-------------------------------	------------	-------------	-------------



	2020	2021	2022
--	------	------	------

**By Kind of Economic Activity at Current Prices (BND Million)**

<b>Agriculture, Forestry and Fishery</b>	<b>201.7</b>	<b>236.5</b>	<b>252.2</b>
Vegetables, Fruits & Other Agriculture	26.0	28.0	27.4
Livestock and Poultry	69.2	79.3	86.4
Forestry	25.5	26.3	21.5
Fishery	80.9	102.9	116.9

<b>Industry Sector</b>	<b>9,795.2</b>	<b>11,801.7</b>	<b>15,625.0</b>
------------------------	----------------	-----------------	-----------------

Oil and Gas Mining	6,514.8	7,667.6	9,899.6
Manufacture of LNG and Other Petroleum & Chemical Products	2,401.6	3,245.0	4,842.6
Manufacture of Wearing Apparel & Textiles	27.9	31.0	32.0
Manufacture of Food and Beverage Products	32.3	40.4	42.0
Other Manufacturing	150.3	168.4	172.6
Electricity and Water	184.1	189.5	189.8
Construction	484.1	459.8	446.5



	2020	2021	2022
--	------	------	------

**By Kind of Economic Activity at Current Prices (BND Million) (Cont'd)**

Services Sector	6,866.0	7,082.5	7,480.7
Wholesale and Retail Trade	988.8	1,065.4	1,149.7
Land Transport	8.2	9.4	10.2
Water Transport	187.1	172.8	173.1
Air Transport	13.3	12.5	37.9
Other Transport Services	67.4	71.5	85.3
Communication	315.6	334.5	345.6
Finance	927.5	935.3	994.7
Real Estate and Ownership of Dwellings	627.5	618.0	635.5
Hotels	17.8	18.6	20.2
Restaurants	174.2	187.1	218.6
Health Services	300.0	312.5	327.6
Education Services	530.4	530.4	533.0
Business Services	407.5	438.0	466.7
Domestic Services	85.0	86.8	89.7
Other Private Services	92.8	93.5	105.3



	2020	2021	2022
--	------	------	------

**By Kind of Economic Activity at Current Prices (BND Million) (Cont'd)**

Services Sector (Cont'd)			
Government Services/Public Administration	2,123.0	2,196.0	2,287.6
<b>Gross Value Added</b>	<b>16,862.8</b>	<b>19,120.6</b>	<b>23,357.8</b>
Taxes Less Subsidies on Products	-298.4	-298.6	-354.7
<b>Gross Domestic Product</b>	<b>16,564.4</b>	<b>18,822.0</b>	<b>23,003.1</b>



2020 2021 2022

**By Kind of Economic Activity at Current Prices (% Share)**

<b>Agriculture, Forestry and Fishery</b>	<b>1.2</b>	<b>1.2</b>	<b>1.1</b>
Vegetables, Fruits & Other Agriculture	0.2	0.1	0.1
Livestock and Poultry	0.4	0.4	0.4
Forestry	0.2	0.1	0.1
Fishery	0.5	0.5	0.5

**Industry Sector**

<b>Industry Sector</b>	<b>58.1</b>	<b>61.7</b>	<b>66.9</b>
Oil and Gas Mining	38.6	40.1	42.4
Manufacture of LNG and Other Petroleum & Chemical Products	14.2	17.0	20.7
Manufacture of Wearing Apparel & Textiles	0.2	0.2	0.1
Manufacture of Food and Beverage Products	0.2	0.2	0.2
Other Manufacturing	0.9	0.9	0.7
Electricity and Water	1.1	1.0	0.8
Construction	2.9	2.4	1.9



2020 2021 2022

**By Kind of Economic Activity at Current Prices (% Share) (Cont'd)**

<b>Services Sector</b>	<b>40.7</b>	<b>37.0</b>	<b>32.0</b>
Wholesale and Retail Trade	5.9	5.6	4.9
Land Transport	0.0	0.0	0.0
Water Transport	1.1	0.9	0.7
Air Transport	0.1	0.1	0.2
Other Transport Services	0.4	0.4	0.4
Communication	1.9	1.7	1.5
Finance	5.5	4.9	4.3
Real Estate and Ownership of Dwellings	3.7	3.2	2.7
Hotels	0.1	0.1	0.1
Restaurants	1.0	1.0	0.9
Health Services	1.8	1.6	1.4
Education Services	3.1	2.8	2.3
Business Services	2.4	2.3	2.0
Domestic Services	0.5	0.5	0.4
Other Private Services	0.6	0.5	0.5



	2020	2021	2022
--	------	------	------

**By Kind of Economic Activity at Current Prices (% Share) (Cont'd)**
**Services Sector (Cont'd)**

Government Services/Public Administration	12.6	11.5	9.8
---	------	------	-----

<b>Gross Value Added</b>	<b>100.0</b>	<b>100.0</b>	<b>100.0</b>
--------------------------	--------------	--------------	--------------



	2020	2021	2022
--	------	------	------

**By Kind of Economic Activity at Constant Prices (BND Million)**

<b>Agriculture, Forestry and Fishery</b>	<b>167.4</b>	<b>195.7</b>	<b>189.2</b>
--	--------------	--------------	--------------

Vegetables, Fruits & Other Agriculture	22.7	20.0	19.9
--	------	------	------

Livestock and Poultry	69.4	82.9	74.0
-----------------------	------	------	------

Forestry	10.4	10.4	8.3
----------	------	------	-----

Fishery	64.9	82.4	87.1
---------	------	------	------

<b>Industry Sector</b>	<b>12,405.9</b>	<b>11,889.0</b>	<b>11,305.6</b>
------------------------	-----------------	-----------------	-----------------

Oil and Gas Mining	7,851.6	7,616.7	7,158.4
--------------------	---------	---------	---------

Manufacture of LNG and Other Petroleum & Chemical Products	3,669.7	3,371.3	3,254.3
--	---------	---------	---------

Manufacture of Wearing Apparel & Textiles	28.1	32.4	32.4
---	------	------	------

Manufacture of Food and Beverage Products	30.9	38.0	38.5
---	------	------	------

Other Manufacturing	132.0	159.8	170.7
---------------------	-------	-------	-------

Electricity and Water	188.4	194.2	194.7
-----------------------	-------	-------	-------

Construction	505.2	476.7	456.6
--------------	-------	-------	-------



	2020	2021	2022
--	------	------	------

**By Kind of Economic Activity at Constant Prices (BND Million) (Cont'd)**

Services Sector	7,106.7	7,282.3	7,556.8
Wholesale and Retail Trade	1,014.3	1,057.5	1,094.9
Land Transport	5.4	6.2	6.7
Water Transport	187.1	172.8	173.1
Air Transport	21.0	16.8	41.5
Other Transport Services	75.0	75.5	82.2
Communication	337.0	351.7	364.1
Finance	980.2	996.2	998.0
Real Estate and Ownership of Dwellings	786.7	804.2	823.4
Hotels	20.0	25.0	28.7
Restaurants	168.0	176.9	201.5
Health Services	295.8	308.8	322.4
Education Services	517.2	516.3	524.6
Business Services	404.0	428.3	445.8
Domestic Services	84.2	85.9	87.7
Other Private Services	89.8	90.2	98.2



	2020	2021	2022
--	------	------	------

**By Kind of Economic Activity at Constant Prices (BND Million) (Cont'd)**

Services Sector (Cont'd)			
Government Services/Public Administration	2,121.0	2,170.1	2,263.8
<b>Gross Value Added</b>	<b>19,680.0</b>	<b>19,367.0</b>	<b>19,051.6</b>
Taxes Less Subsidies on Products	-365.0	-359.2	-353.3
<b>Gross Domestic Product</b>	<b>19,315.0</b>	<b>19,007.8</b>	<b>18,698.2</b>





2020 2021 2022

**Growth Rate (%) by Kind of Economic Activity at Constant Prices**

<b>Agriculture, Forestry and Fishery</b>	<b>14.4</b>	<b>16.9</b>	<b>-3.3</b>
Vegetables, Fruits & Other Agriculture	-0.8	-11.9	-0.3
Livestock and Poultry	10.5	19.3	-10.7
Forestry	-23.6	0.2	-20.8
Fishery	38.0	27.1	5.6

**Industry Sector**

	<b>2.9</b>	<b>-4.2</b>	<b>-4.9</b>
Oil and Gas Mining	-4.9	-3.0	-6.0
Manufacture of LNG and Other Petroleum & Chemical Products	25.9	-8.1	-3.5
Manufacture of Wearing Apparel & Textiles	-17.8	15.2	0.1
Manufacture of Food and Beverage Products	20.9	23.0	1.4
Other Manufacturing	-7.3	21.0	6.8
Electricity and Water	-2.2	3.1	0.2
Construction	3.2	-5.6	-4.2



2020 2021 2022

**Growth Rate (%) by Kind of Economic Activity at Constant Prices (Cont'd)**

<b>Services Sector</b>	<b>-2.1</b>	<b>2.5</b>	<b>3.8</b>
Wholesale and Retail Trade	2.8	4.3	3.5
Land Transport	-48.8	14.7	8.0
Water Transport	7.6	-7.6	0.2
Air Transport	-75.8	-20.1	147.1
Other Transport Services	-22.3	0.7	8.9
Communication	15.9	4.4	3.5
Finance	-2.8	1.6	0.2
Real Estate and Ownership of Dwellings	2.5	2.2	2.4
Hotels	-18.4	24.7	14.7
Restaurants	-4.9	5.3	13.9
Health Services	2.8	4.4	4.4
Education Services	-10.5	-0.2	1.6
Business Services	5.0	6.0	4.1
Domestic Services	2.0	2.0	2.0
Other Private Services	-5.4	0.4	8.9



	2020	2021	2022
--	------	------	------

**Growth Rate (%) by Kind of Economic Activity at Constant Prices (Cont'd)**
**Services Sector (Cont'd)**

Government Services/Public Administration	-3.9	2.3	4.3
---	------	-----	-----

<b>Gross Value Added</b>	<b>1.1</b>	<b>-1.6</b>	<b>-1.6</b>
--------------------------	------------	-------------	-------------

<b>Gross Domestic Product</b>	<b>1.1</b>	<b>-1.6</b>	<b>-1.6</b>
-------------------------------	------------	-------------	-------------



	2020	2021	2022
--	------	------	------

**By Type of Expenditure at Current Prices (BND Million)**

Government Final Consumption Expenditure	4,212.5	4,228.8	4,629.2
Household Final Consumption Expenditure	3,939.3	4,677.6	5,349.6
Gross Capital Formation	6,723.1	5,886.1	5,946.5
Gross Fixed Capital Formation	6,688.3	5,850.7	5,906.7
Private	6,455.7	5,710.0	5,724.8
Government	232.6	140.7	181.9
Change in Inventories	34.8	35.4	39.8
Exports of Goods and Services	9,500.7	15,089.4	19,872.2
Goods	9,026.5	14,820.1	19,484.0
Services	474.2	269.3	388.2
Imports of Goods and Services	8,768.4	12,602.1	13,936.3
Goods	7,115.8	11,396.9	12,378.6
Services	1,652.6	1,205.2	1,557.7
Statistical Discrepancy	957.2	1,542.2	1,141.9



	2020	2021	2022
<b>By Type of Expenditure at Current Prices (% Share)</b>	<b>100.0</b>	<b>100.0</b>	<b>100.0</b>
Government Final Consumption Expenditure	25.4	22.4	20.1
Household Final Consumption Expenditure	23.8	24.9	23.3
Gross Capital Formation	40.6	31.3	25.9
Gross Fixed Capital Formation	40.4	31.1	25.7
Private	39.0	30.3	24.9
Government	1.4	0.7	0.8
Change in Inventories	0.2	0.2	0.2
Exports of Goods and Services	57.4	80.2	86.4
Goods	54.5	78.7	84.7
Services	2.9	1.4	1.7
Imports of Goods and Services	52.9	67.0	60.6
Goods	43.0	60.6	53.8
Services	10.0	6.4	6.8
Statistical Discrepancy	5.8	8.2	5.0



	2020	2021	2022
<b>By Type of Expenditure at Constant Prices (BND Million)</b>	<b>19,315.0</b>	<b>19,007.8</b>	<b>18,698.2</b>
Government Final Consumption Expenditure	4,186.9	4,291.2	4,589.6
Household Final Consumption Expenditure	4,605.7	4,861.3	5,266.6
Gross Capital Formation	6,844.2	5,898.5	5,794.0
Gross Fixed Capital Formation	6,808.3	5,863.7	5,755.9
Private	6,576.5	5,720.1	5,572.0
Government	231.8	143.6	183.8
Change in Inventories	35.9	34.7	38.2
Exports of Goods and Services	12,727.8	13,843.1	14,800.0
Goods	12,254.9	13,577.4	14,431.1
Services	472.9	265.7	368.8
Imports of Goods and Services	8,741.7	11,317.3	12,396.9
Goods	7,091.2	10,127.6	10,913.7
Services	1,650.5	1,189.7	1,483.2
Statistical Discrepancy	-307.8	1,427.1	644.8



	2020	2021	2022
<b>Growth Rate (%) by Type of Expenditure at Constant Prices</b>	<b>1.1</b>	<b>-1.6</b>	<b>-1.6</b>
Government Final Consumption Expenditure	-9.6	2.5	6.9
Household Final Consumption Expenditure	21.5	5.6	8.3
Gross Capital Formation	-9.3	-13.8	-1.8
Gross Fixed Capital Formation	-9.3	-13.9	-1.8
Private	-7.6	-13.0	-2.6
Government	-40.7	-38.0	28.0
Change in Inventories	8.8	-3.2	9.8
Exports of Goods and Services	7.5	8.8	6.9
Goods	11.7	10.8	6.3
Services	-45.1	-43.8	38.8
Imports of Goods and Services	-2.1	29.5	9.5
Goods	10.8	42.8	7.8
Services	-34.6	-27.9	24.7



	2020	2021	2022
<b>Gross Value Added by Income at Current Prices (BND Million)</b>	<b>16,862.8</b>	<b>19,120.6</b>	<b>23,357.8</b>
Compensation of Employees	5,529.8	5,641.7	5,842.5
Consumption of Fixed Capital	867.3	927.8	1,048.4
Other Taxes on Production	14.8	15.1	15.8
Net Operating Surplus/ Mixed Income	10,450.9	12,536.1	16,451.1
<b>Gross Value Added Share (%) by Income at Current Prices</b>	<b>100.0</b>	<b>100.0</b>	<b>100.0</b>
Compensation of Employees	32.8	29.5	25.0
Consumption of Fixed Capital	5.1	4.9	4.5
Other Taxes on Production	0.1	0.1	0.1
Net Operating Surplus/ Mixed Income	62.0	65.6	70.4



	2020	2021	2022
--	------	------	------

**International Merchandise Trade Statistics (BND Million)**

Exports f.o.b.	9,121.8	14,133.8	19,623.6
Imports c.i.f.	7,338.6	9,721.7	12,664.3
Total Trade	16,460.4	23,855.5	32,287.9
Trade Balance	1,783.2	4,412.1	6,959.3

**Annual Change (%)**

Exports f.o.b.	-7.7	54.9	38.8
Imports c.i.f.	5.5	32.5	30.3



	2020	2021	2022
--	------	------	------

**Exports by Commodity Section (BND Million)**

Food	14.0	52.2	60.6
Beverages and Tobacco	0.1	0.2	0.3
Crude Materials, Inedible	8.6	40.8	38.7
Mineral Fuels	7,435.5	11,037.2	15,752.4
Animal and Vegetable Oils and Fats	0.1	0.9	0.6
Chemicals	1,524.6	2,608.7	3,430.3
Manufactured Goods	22.4	43.0	100.6
Machinery and Transport Equipment	68.9	289.0	181.8
Miscellaneous Manufactured Articles	29.9	41.4	44.2
Miscellaneous Transactions	17.7	20.3	14.1
<b>Total</b>	<b>9,121.8</b>	<b>14,133.8</b>	<b>19,623.6</b>



2020 2021 2022

## Exports by Trading Partners (BND Million)

ASEAN	3,665.8	4,497.5	7,706.6
Cambodia	0.0	0.0	24.4
Indonesia	99.3	218.4	930.2
Lao PDR	0.0	-	0.0
Malaysia	702.9	737.6	1,986.4
Myanmar	0.0	0.1	75.1
Philippines	200.9	504.9	588.7
Singapore	1,943.9	1,973.3	2,659.1
Thailand	405.4	695.8	642.5
Viet Nam	313.4	367.3	800.2
<b>European Union</b>	<b>2.5</b>	<b>6.6</b>	<b>14.8</b>
France	0.1	0.2	0.4
Germany	0.9	1.0	5.1
Italy	1.4	1.7	4.0
Netherlands	-	3.3	3.7
Others	0.1	0.4	1.6



2020 2021 2022

## Exports by Trading Partners (BND Million) (Cont'd)

Other Trading Partners	5,453.5	9,629.7	11,902.1
Australia	458.4	2,420.7	4,043.4
People's Republic of China	1,613.4	2,959.6	3,053.1
Hong Kong SAR	2.8	154.3	18.5
Japan	2,335.0	2,954.3	3,409.3
Republic of Korea	196.2	112.4	345.8
Taiwan	122.2	161.4	29.0
United Kingdom	5.7	18.5	33.0
USA	105.1	38.5	177.3
Others	614.7	810.0	792.7
<b>Total</b>	<b>9,121.8</b>	<b>14,133.8</b>	<b>19,623.6</b>



2020 2021 2022

**Exports of Crude Oil by Trading Partners (BND Million)**

Australia	194.4	951.0	1,467.2
India	464.7	583.2	371.2
Indonesia	21.1	-	97.3
Japan	34.1	139.6	119.5
Republic of Korea	93.2	-	95.0
Malaysia (Peninsular)	68.9	136.8	90.1
Singapore	396.1	493.6	391.2
Thailand	299.5	535.3	361.3
Viet Nam	113.1	-	-
Others	72.1	56.3	-
<b>Total</b>	<b>1,757.3</b>	<b>2,895.8</b>	<b>2,992.7</b>

**Exports of Liquefied Natural Gas by Trading Partners (BND Million)**

Japan	2,161.9	2,704.6	3,231.0
Republic of Korea	86.9	64.1	202.8
Malaysia	401.5	159.5	864.5
Others	276.6	555.7	513.7
<b>Total</b>	<b>2,926.9</b>	<b>3,483.9</b>	<b>4,811.9</b>



2020 2021 2022

**Imports by Commodity Section (BND Million)**

Food	707.8	733.4	792.9
Beverages and Tobacco	59.4	66.3	64.7
Crude Materials, Inedible	23.5	83.1	106.2
Mineral Fuels	2,679.6	5,832.3	8,583.4
Animal and Vegetable Oils and Fats	21.1	25.7	34.8
Chemicals	669.3	578.5	689.8
Manufactured Goods	827.1	547.5	575.3
Machinery and Transport Equipment	1,944.5	1,422.2	1,381.1
Miscellaneous Manufactured Articles	404.8	425.9	421.4
Miscellaneous Transactions	1.6	6.8	14.6
<b>Total</b>	<b>7,338.6</b>	<b>9,721.7</b>	<b>12,664.3</b>



2020 2021 2022

## Imports by Trading Partners (BND Million)

ASEAN	2,801.8	3,454.3	4,567.4
Cambodia	20.2	14.2	18.6
Indonesia	214.0	378.1	374.1
Lao PDR	0.0	0.0	0.0
Malaysia	1,311.1	2,142.6	3,041.8
Myanmar	1.0	0.8	1.4
Philippines	12.2	41.8	201.4
Singapore	1,039.3	690.5	678.1
Thailand	174.9	126.0	112.7
Viet Nam	29.0	60.3	139.3
European Union	373.2	257.1	231.0
France	32.5	18.3	18.1
Germany	197.3	118.0	86.2
Italy	79.5	43.1	43.8
Netherlands	22.1	22.9	26.5
Others	41.8	54.9	56.5



2020 2021 2022

## Imports by Trading Partners (BND Million) (Cont'd)

Other Trading Partners	4,163.6	6,010.3	7,865.9
Australia	407.6	585.1	598.9
People's Republic of China	792.9	798.0	1,117.7
Hong Kong SAR	35.6	46.8	28.9
Japan	231.9	199.4	148.9
Republic of Korea	151.0	66.6	112.7
Taiwan	116.8	39.3	51.2
United Kingdom	479.8	93.8	151.9
USA	407.2	297.3	392.1
Others	1,540.8	3,883.9	5,263.6
Total	7,338.6	9,721.7	12,664.3





	2020	2021	2022
--	------	------	------

**Total Foreign Direct Investment Flows (BND Million)**
**By Component**

Equity Investment	216.5	312.1	-71.3
Debts Instrument	580.2	-37.0	-331.9
<b>Total</b>	<b>796.7</b>	<b>275.1</b>	<b>-403.2</b>

**By Economic Activities**

Mining and Quarrying	-93.8	-110.1	-293.8
Manufacturing	877.2	315.8	-231.2
Construction	-8.9	18.1	14.7
Wholesale and Retail Trade	-9.4	8.3	27.8
Financial and Insurance Activities	18.3	53.2	80.5
Professional, Scientific and Technical Activities	9.7	16.9	-25.9
Other Activities	3.6	-27.0	24.7
<b>Total</b>	<b>796.7</b>	<b>275.1</b>	<b>-403.2</b>



	2020	2021	2022
--	------	------	------

**Total Foreign Direct Investment Flows (BND Million)**
**By Country**

<b>ASEAN</b>	<b>5.6</b>	<b>58.9</b>	<b>114.8</b>
Malaysia	-18.8	1.6	46.1
Singapore	26.7	58.2	68.8
Others	-2.3	-0.9	-0.1
<b>European Union</b>	<b>-85.9</b>	<b>61.2</b>	<b>-148.0</b>
Germany	-0.4	0.4	0.0
Netherlands	-85.5	60.0	-140.8
Others	-0.0	0.8	-7.2
<b>Other Countries</b>	<b>877.0</b>	<b>155.0</b>	<b>-370.0</b>
Hong Kong SAR	740.6	280.4	-212.7
Japan	186.7	30.9	-8.6
United Kingdom	-79.0	-224.7	-248.8
USA	1.2	0.6	0.9
Others	27.6	67.8	99.2
<b>Total</b>	<b>796.7</b>	<b>275.1</b>	<b>-403.2</b>



	2020	2021	2022
--	------	------	------

**Total Foreign Direct Investment Stock (BND Million)**
**By Component**

Equity Investment	7,993.7	8,019.4	7,697.5
Debts Instrument	2,139.1	1,921.8	1,494.4
<b>Total</b>	<b>10,132.8</b>	<b>9,941.2</b>	<b>9,191.9</b>

**By Economic Activities**

Mining and Quarrying	4,290.4	4,047.3	3,568.2
Manufacturing	4,002.6	4,128.8	3,749.7
Construction	78.3	38.4	65.2
Wholesale and Retail Trade	145.6	156.7	187.3
Financial and Insurance Activities	1,037.7	1,045.0	1,022.5
Professional, Scientific and Technical Activities	239.4	240.6	306.6
Other Activities	338.8	284.4	292.4
<b>Total</b>	<b>10,132.8</b>	<b>9,941.2</b>	<b>9,191.9</b>



	2020	2021	2022
--	------	------	------

**Total Foreign Direct Investment Stock (BND Million)**
**By Country**

<b>ASEAN</b>	<b>772.1</b>	<b>633.9</b>	<b>668.9</b>
Malaysia	250.1	242.5	232.6
Singapore	516.7	387.0	430.9
Others	5.3	4.4	5.3
<b>European Union</b>	<b>1,190.8</b>	<b>1,049.6</b>	<b>912.6</b>
Germany	15.0	15.5	10.0
Netherlands	1,141.1	1,008.5	872.8
Others	34.7	25.5	29.8
<b>Other Countries</b>	<b>8,169.9</b>	<b>8,257.7</b>	<b>7,610.4</b>
Hong Kong SAR	3,533.2	3,498.7	3,222.7
Japan	346.3	426.9	412.8
United Kingdom	3,482.1	3,193.4	2,840.2
USA	4.9	25.5	24.6
Others	803.5	1,113.2	1,110.1
<b>Total</b>	<b>10,132.8</b>	<b>9,941.2</b>	<b>9,191.9</b>



## Consumer Price Index (Jan 2015=100)

Major Groups	Weights
Food and Non-Alcoholic Beverages	1,883
Clothing and Footwear	403
Housing, Water, Electricity, Gas and Other Fuels	1,170
Furnishing, Household Equipment and Routine Household Maintenance	702
Health	91
Transport	1,961
Communication	594
Recreation and Culture	664
Education	696
Restaurants and Hotels	1,069
Miscellaneous Goods and Services	767
<b>Total</b>	<b>10,000</b>



## 2020 2021 2022

All Groups (Index)	2020	2021	2022
Food and Non-Alcoholic Beverages	104.3	106.8	112.3
Clothing and Footwear	100.0	99.5	100.7
Housing, Water, Electricity, Gas and Other Fuels	93.2	93.0	94.8
Furnishing, Household Equipment and Routine Household Maintenance	101.6	100.5	101.4
Health	101.6	102.5	102.7
Transport	95.0	101.3	106.1
Communication	99.5	100.1	99.0
Recreation and Culture	103.4	103.8	105.2
Education	105.1	105.3	105.3
Restaurants and Hotels	103.7	104.5	106.8
Miscellaneous Goods and Services	110.1	110.5	126.0
<b>Inflation Rate (%)</b>	<b>1.9</b>	<b>1.7</b>	<b>3.7</b>



## International Merchandise Trade Index (Jan 2015=100)

Commodity	Weights	
	Exports	Imports
Food	6.3	1,598.0
Beverages	3.1	192.1
Crude Materials, Inedible	10.2	114.0
Mineral Fuels	9,566.6	755.1
Animal and Vegetable Oils and Fats	-	45.5
Chemicals	187.5	809.7
Manufactured Goods	59.3	2,349.6
Machinery and Transport Equipment	114.0	3,141.0
Miscellaneous Manufactured Articles	52.9	995.0
<b>Total</b>	<b>10,000</b>	<b>10,000</b>



## 2020 2021 2022

## All Goods (Index)

Term of Trade	66.8	84.3	119.9
Exports			
Unit Value Index	90.2	112.0	162.1
Volume Index	116.4	86.4	67.0
Imports			
Unit Value Index	135.1	132.9	135.2
Volume Index	127.5	111.8	114.1



	2020	2021	2022
--	------	------	------

**Exports Unit Value Index by Commodity Section**

Overall Index	90.2	112.0	162.1
Food	116.0	142.2	153.2
Beverages	81.4	67.0	88.0
Crude Materials, Inedible	72.1	121.3	120.5
Mineral Fuels	89.4	111.6	163.5
Chemicals	94.0	121.0	151.3
Manufactured Goods	176.1	173.8	167.3
Machinery and Transport Equipment	104.6	97.8	98.2
Miscellaneous Manufactured Articles	93.1	105.1	92.4



	2020	2021	2022
--	------	------	------

**Exports Volume Index by Commodity Section**

Overall Index	116.4	86.4	67.0
Food	101.4	92.3	100.9
Beverages	134.1	138.3	121.5
Crude Materials, Inedible	129.6	104.6	85.4
Mineral Fuels	116.2	85.4	65.6
Chemicals	108.0	98.8	85.4
Manufactured Goods	112.6	109.3	123.5
Machinery and Transport Equipment	139.1	114.4	106.8
Miscellaneous Manufactured Articles	127.7	122.4	103.8



	2020	2021	2022
--	------	------	------

**Imports Unit Value Index by Commodity Section**

	2020	2021	2022
Overall Index	117.1	132.9	135.2
Food	105.0	105.0	106.3
Beverages	109.4	106.2	109.8
Crude Materials, Inedible	125.9	134.7	141.2
Mineral Fuels	120.9	125.1	175.8
Animal and Vegetable Oils and Fats	124.3	137.3	165.4
Chemicals	111.9	119.4	127.2
Manufactured Goods	165.0	140.1	163.7
Machinery and Transport Equipment	152.5	157.4	131.9
Miscellaneous Manufactured Articles	93.9	104.8	103.3



	2020	2021	2022
--	------	------	------

**Imports Volume Index by Commodity Section**

	2020	2021	2022
Overall Index	127.5	111.8	114.1
Food	130.9	130.9	143.5
Beverages	81.4	92.0	88.9
Crude Materials, Inedible	77.7	76.5	78.2
Mineral Fuels	107.6	98.0	90.9
Animal and Vegetable Oils and Fats	128.0	123.5	109.6
Chemicals	136.0	160.9	148.2
Manufactured Goods	105.3	77.7	75.0
Machinery and Transport Equipment	143.3	104.7	111.9
Miscellaneous Manufactured Articles	147.4	162.3	165.2



	2020	2021	2022
--	------	------	------

**Terms of Trade Index by Commodity Section**

Overall Index	66.8	84.3	119.9
Food	110.5	135.5	144.1
Beverages	74.4	63.1	80.1
Crude Materials, Inedible	57.3	90.1	85.3
Mineral Fuels	74.0	89.2	93.0
Chemicals	84.0	101.3	118.9
Manufactured Goods	106.7	124.1	102.2
Machinery and Transport Equipment	68.5	62.2	74.5
Miscellaneous Manufactured Articles	99.2	100.3	89.4



	2020	2021	2022
--	------	------	------

**Average Production**

Oil (Kbbl/d)	110	107	92
Natural Gas (Kboe/d)	231	214	196

**Average Exports**

Oil (Kbbl/d)	77	81	55
LNG (MMBtu/d)	880,305	778,231	664,602

**Average Price of Exports**

Oil (USD/Barrel)	43.32	72.07	107.69
LNG (USD/MMBtu)	6.66	9.12	14.40

**Production of Petroleum Products ( Thousand m<sup>3</sup>)**

Motor Gasoline	1,941	1,932	2,534
Diesel	3,128	2,963	3,573
Dual Purpose Kerosene	418	116	58
Liquefied Petroleum Gas (LPG)	1,179	1,199	1,058
Other Petroleum Products	1,036	1,503	1,141
Petrochemical Products	2,771	2,443	2,332



	2020	2021	2022
<b>Domestic Consumption (Thousand m<sup>3</sup>)</b>			
Motor Gasoline (Mogas)	340.65	321.32	344.63
Premium RON 97	297.78	281.23	300.45
Super RON 92	0.85	0.68	0.23
Regular RON 85	42.02	39.41	38.75
Diesel	278.68	277.79	286.82
V-Power Mogas	9.51	6.62	5.20
V-Power Diesel	1.54	1.19	1.11
Kerosene	5.78	5.25	3.94
Jet A-1	46.69	21.65	48.77
Liquefied Petroleum Gas (LPG)	34.77	33.22	32.33
Gas	1,707,857.22	1,827,007.50	1,734,738.92



	2020	2021	2022
<b>End of Period:</b>			
<b>Money Aggregates (BND Million)</b>			
Narrow Money	5,504	5,861	5,934
Quasi Money	9,997	10,058	10,185
<b>Broad Money</b>	<b>15,500</b>	<b>15,920</b>	<b>16,119</b>
<b>Currency in Circulation (BND Million)</b>			
Gross Circulation	1,358	1,431	1,422
Active Circulation	1,241	1,328	1,236





	2020	2021	2022
--	------	------	------

**End of Period:****Banking System : Assets (BND Million)**

Notes and Coins Held	186	180	173
Balances with BDCB, including Minimum Cash Balance	1,497	2,517	2,590

**Amount Due from Banks and Financial Institutions:**

In Brunei Darussalam	763	742	542
Outside Brunei Darussalam	6,709	6,055	6,248
Loan and Advances/Financing (Net)	5,659	5,951	6,266
Investments	3,125	3,474	4,059
Other Assets	363	446	803

<b>Total Assets</b>	<b>18,303</b>	<b>19,365</b>	<b>20,681</b>
---------------------	---------------	---------------	---------------



	2020	2021	2022
--	------	------	------

**End of Period:****Banking System : Liabilities (BND Million)****Deposits (Non-bank Customers):**

Demand	4,634	5,941	4,885
Savings	4,590	4,558	4,637
Time	5,089	5,502	7,704
Others	82	92	83

**Amount Due to Banks:**

In Brunei Darussalam	204	164	69
Outside Brunei Darussalam	1,014	377	217
Others (Capital Funds and Other Liabilities)	2,689	2,732	3,087

<b>Total Liabilities</b>	<b>18,303</b>	<b>19,365</b>	<b>20,681</b>
--------------------------	---------------	---------------	---------------



	2020	2021	2022
--	------	------	------

**Brunei Dollar to 1 unit:****US Dollar**

Period Average	1.38	1.34	1.38
End of Period	1.32	1.35	1.34

**Pound Sterling**

Period Average	1.77	1.85	1.70
End of Period	1.81	1.82	1.62

**Australian Dollar**

Period Average	0.95	1.01	0.96
End of Period	1.02	0.98	0.91

**Euro**

Period Average	1.57	1.59	1.45
End of Period	1.61	1.53	1.44

**Malaysian Ringgit**

Period Average	0.33	0.32	0.31
End of Period	0.33	0.32	0.30



	2020	2021	2022
--	------	------	------

**Brunei Dollar to 100 units:****End of Period:**

Malaysian Ringgit	32.86	32.39	30.44
Hongkong Dollar	17.04	17.30	17.19
Indonesian Rupiah	0.01	0.01	0.01
Japanese Yen	1.28	1.17	1.02
Philippine Peso	2.75	2.64	2.41
Saudi Riyal	35.22	35.90	35.69
Swiss Franc	149.30	147.84	144.96
Thai Baht	4.41	4.06	3.88



CALENDAR YEAR	2020	2021	2022 <sup>P</sup>
<b>Total Government Revenue (BND Million)</b>	<b>2,892.4</b>	<b>3,975.3</b>	<b>6,687.1</b>
<b>Oil and Gas Revenue</b>	<b>1,727.8</b>	<b>3,211.1</b>	<b>5,798.2</b>
<b>Revenue from Government Operations</b>	<b>745.9</b>	<b>683.0</b>	<b>780.6</b>
Taxes	346.7	340.9	399.5
Fees, Charges and Rent	347.4	312.5	350.9
Others	51.8	29.6	30.2
<b>Return from Investments and Savings</b>	<b>418.7</b>	<b>64.7</b>	<b>67.5</b>
<b>Excess Revenue - Statutory bodies</b>	<b>-</b>	<b>16.5</b>	<b>40.9</b>
<b>Total Government Expenditure (BND Million)</b>	<b>5,505.3</b>	<b>5,512.4</b>	<b>6,048.2</b>
<b>Charged Expenditure</b>	<b>1,094.2</b>	<b>1,225.5</b>	<b>1,538.6</b>
<b>Ordinary Expenditure</b>	<b>4,131.1</b>	<b>4,117.2</b>	<b>4,290.8</b>
Personnel Emoluments	1,967.5	1,991.4	2,039.0
Other Charges Annually Recurrent	2,163.6	2,125.8	2,251.8
<b>Development Expenditure</b>	<b>280.0</b>	<b>169.7</b>	<b>218.8</b>
<b>Fiscal Balance</b>	<b>-2,612.9</b>	<b>-1,537.1</b>	<b>638.9</b>



FISCAL YEAR	2020/21	2021/22	2022/23 <sup>P</sup> Apr22-Jan23
<b>Total Government Revenue (BND Million)</b>	<b>2,051.0</b>	<b>4,767.5</b>	<b>5,243.1</b>
<b>Oil and Gas Revenue</b>	<b>1,242.6</b>	<b>4,004.2</b>	<b>4,576.5</b>
<b>Revenue from Government Operations</b>	<b>706.4</b>	<b>686.2</b>	<b>600.4</b>
Taxes	340.5	348.7	290.4
Fees, Charges and Rent	312.3	318.9	285.6
Others	53.6	18.7	24.5
<b>Return from Investments and Savings</b>	<b>101.9</b>	<b>60.6</b>	<b>25.4</b>
<b>Excess Revenue - Statutory bodies</b>	<b>-</b>	<b>16.5</b>	<b>40.9</b>
<b>Total Government Expenditure (BND Million)</b>	<b>5,292.4</b>	<b>5,780.2</b>	<b>4,724.8</b>
<b>Charged Expenditure</b>	<b>1,062.1</b>	<b>1,302.8</b>	<b>1,225.4</b>
<b>Ordinary Expenditure</b>	<b>4,023.7</b>	<b>4,265.9</b>	<b>3,386.5</b>
Personnel Emoluments	1,969.1	1,992.6	1,727.7
Other Charges Annually Recurrent	2,054.6	2,273.3	1,658.8
<b>Development Expenditure</b>	<b>206.6</b>	<b>211.5</b>	<b>112.9</b>
<b>Fiscal Balance</b>	<b>-3,241.4</b>	<b>-1,012.6</b>	<b>518.3</b>



2020 2021 2022

	2020	2021	2022
<b>Educational Institutions (Number) <sup>(2)</sup></b>	<b>252</b>	<b>256</b>	<b>255</b>
<b>Government Schools</b>	<b>175</b>	<b>176</b>	<b>175</b>
Pre-Primary (Pre-School)/Primary	122	121	121
Secondary/Sixth Form (Pre-University)	39	41	40
Technical/Vocational	9	9	9
Tertiary	5	5	5
<b>Private Schools</b>	<b>77</b>	<b>80</b>	<b>80</b>
Pre-Primary (Pre-School)/Primary/Secondary/Sixth Form (Pre-University)	72	73	72
Technical/Vocational	3	4	4
Tertiary	2	3	4



2020 2021 2022

	2020	2021	2022
<b>Teachers (Persons)</b>	<b>11,282</b>	<b>10,852</b>	<b>10,716</b>
<b>Government Schools</b>	<b>8,864</b>	<b>8,387</b>	<b>8,371</b>
Pre-Primary (Pre-School)	157	237	269
Primary	3,105	2,836	2,733
Secondary/Sixth Form (Pre-University)	4,367	4,087	4,082
Technical/Vocational	464	441	487
Tertiary	771	786	800
<b>Private Schools</b>	<b>2,418</b>	<b>2,465</b>	<b>2,345</b>
Pre-Primary (Pre-School)	597	676	556
Primary	1,153	1,147	1,135
Secondary/Sixth Form (Pre-University)	531	503	511
Technical/Vocational	64	51	53
Tertiary	73	88	90



	2020	2021	2022
<b>Students (Persons)</b>	<b>105,762</b>	<b>105,956</b>	<b>104,493</b>
<b>Government Schools</b>	<b>70,814</b>	<b>71,467</b>	<b>71,351</b>
Pre-Primary (Pre-School)	3,032	2,486	2,911
Primary	23,318	23,078	22,461
Secondary	27,155	26,850	26,433
Sixth Form (Pre-University)	3,519	3,998	4,307
Technical/Vocational	3,694	4,053	3,256
Tertiary	10,096	11,002	11,983
<b>Private Schools</b>	<b>34,948</b>	<b>34,489</b>	<b>33,142</b>
Pre-Primary (Pre-School)	10,219	9,679	7,371
Primary	16,331	16,439	16,616
Secondary	5,551	5,603	5,600
Sixth Form (Pre-University)	440	470	486
Technical/Vocational	1,302	1,241	1,404
Tertiary	1,105	1,057	1,665



	2020	2021	2022
<b>Male Student per 100 Female Student</b>			
Pre-Primary (Pre-School)	108	108	107
Primary	106	106	106
Secondary	107	108	108
Sixth Form (Pre-University)	68	68	71
Technical/Vocational	109	128	133
Tertiary	69	71	69
	<b>2019</b>	<b>2020</b>	<b>2021<sup>P</sup></b>
<b>Literacy Rate (%) Aged 10 and Above</b>			
Total	97.2	97.3	96.5
Male	98.2	98.2	97.0
Female	96.1	96.2	96.0



	2020	2021	2022
--	------	------	------

**Medical Institutions (Number)**

Hospital	7	7	7
Medical Centre	9	9	9
Health Centre	15	15	15
Health Clinic	17	17	17
Beds in Hospital	1,716	1,724	1,908

**Medical Personnels (Persons)**

Medical Doctor	948	1,038	1,080
Dentists	114	118	118
Nurses	2,419	2,775	2,463
Pharmacists	88	88	94
Midwives	358	379	424

<b>Population per Medical Doctor</b>	<b>466</b>	<b>425</b>	<b>412</b>
--------------------------------------	------------	------------	------------



	2019	2020	2021
--	------	------	------

**Leading Causes of Deaths**

	<b>1,760</b>	<b>1,752</b>	<b>1,865</b>
Cancer	334	352	344
Heart Diseases (Including Acute Rheumatic Fever)	276	239	239
Diabetes Mellitus	172	177	227
Cerebrovascular Diseases	162	146	174
Hypertensive Diseases	73	66	76
Septicaemia	53	59	103
Bronchitis, Chronic and Unspecified Emphysema and Asthma	47	42	43
Influenza and Pneumonia	44	39	31
Certain Conditions Originating In The Perinatal Period	32	39	24
Other Diseases	567	593	604



	2020	2021	2022
--	------	------	------

Length of Road (Kilometre)	3,772.3	3,787.9	3,805.7
----------------------------	---------	---------	---------

#### Land Transport

Newly Registered Vehicles (Number)	2020	2021	2022
------------------------------------	------	------	------

Private Cars	14,005	13,149	13,644
Taxi	4	-	-
Goods Vehicles	240	311	298
Buses	17	25	22
Motorcycles/Scooters	523	395	410
Others	24	6	13



	2020	2021	2022
--	------	------	------

#### Air Transport

##### Aircraft Movements (Number)

Scheduled	5,124	2,012	5,148
Non-Scheduled	452	632	1,097

##### Passengers (Thousand Persons)

Inward	180.7	19.3	252.3
Outward	176.1	28.4	257.6
Transit	66.1	-	45.0

##### Freight (Thousand Kilogramme)

Inward	6,811.5	5,250.2	5,229.1
Outward	3,071.3	1,712.5	2,010.2



	2020	2021	2022
--	------	------	------

**Sea Transport <sup>(3)</sup>****Vessels/Boats Licensed (Number)**

Passenger Boats	105	12	10
Vessels	3	5	2
Fishing Vessels	28	2	2
Pleasure Crafts	450	448	473

**Seaborne Cargo (Thousand Freight Tonne)**

Discharged	1,006.6	954.9	907.9
Loaded	78.8	65.4	294.4



	2020	2021	2022
--	------	------	------

**Fixed Lines**

Number of Fixed Lines (Thousand)	103.9	112.3	122.2
Fixed Line per 100 Population	23.5	25.5	27.4

**Mobile Subscribers (Cumulative)**

Postpaid	99,265	117,335	127,301
Prepaid	437,324	486,151	401,422

**Mobile Penetration Rate (%)**

	121.5	136.9	118.7
--	-------	-------	-------





	2020	2021	2022
<b>Internet Subscribers (Number) <sup>(4)</sup></b>	<b>616,187</b>	<b>688,701</b>	<b>623,710</b>
Fixed Broadband	71,078	79,417	90,186
Mobile Broadband	545,109	609,284	533,524
<b>Internet Penetration Rate (%)</b>			
Fixed Broadband	16.1	18.0	20.2
Mobile Broadband	123.4	138.2	119.8
<b>Postal</b>			
Post Office (Number) <sup>(5)</sup>	21	21	21
<b>Postal Services (Pieces)</b>			
Letter Mails	3,130,361	2,290,359	1,641,971
Printed Matters	54,884	39,600	45,178
Postcards	6,516	1,429	946
Registered Articles	136,382	166,809	125,844
Parcels, Small Packets and Others	164,528	246,385	203,324



	2020	2021	2022
<b>Electricity</b>			
Generation Capacity (MW)	917.2	899.2	899.2
Production (GWh)	4,508.6	4,450.8	4,389.5
Consumption (GWh)	3,936.9	3,950.3	3,697.8
Coverage in Electricity Supply (%)	99.9	99.9	99.9
<b>Water</b>			
Production (Thousand m <sup>3</sup> )	160,364.5	159,672.7	154,953.6
Consumption (Thousand m <sup>3</sup> )	83,319.2	74,841.7	82,460.5
Coverage in Water Supply (%)	99.9	99.9	99.9



	2020	2021	2022
--	------	------	------

#### Main Crop Production (Metric Tonne)

Rice	2,511.3	2,672.0	2,315.7
Paddy	3,863.6	4,110.7	3,562.6
Vegetable	8,508.0	7,486.1	7,412.1
Fruit	7,214.8	6,273.9	5,611.4

#### Local and Import Livestock Production

##### Buffaloes

<b>Local</b> (Number)	2,300	1,311	1,209
-----------------------	-------	-------	-------

##### Imports

Live (Number)	1,038	2,385	3,453
Chilled & Frozen (Metric Tonne)	994.0	-	1,288.1

<b>Slaughtered</b> (Number)	2,061	3,430	2,938
-----------------------------	-------	-------	-------

Dressed Weight (Metric Tonne)	419.3	699.5	585.7
-------------------------------	-------	-------	-------



	2020	2021	2022
--	------	------	------

#### Cattles

<b>Local</b> (Number)	583	353	367
-----------------------	-----	-----	-----

#### Imports

Live (Number)	8,493	15,734	6,863
---------------	-------	--------	-------

Chilled & Frozen (Metric Tonne)	332.0	685.7	1,775.6
---------------------------------	-------	-------	---------

<b>Slaughtered</b> (Number)	7,647	13,737	6,405
-----------------------------	-------	--------	-------

Dressed Weight (Metric Tonne)	1,729.4	3,125.7	1,449.4
-------------------------------	---------	---------	---------

#### Goats

<b>Local</b> (Number)	6,110	4,169	4,160
-----------------------	-------	-------	-------

<b>Import</b> (Number)	1,300	6,793	-
------------------------	-------	-------	---

<b>Slaughtered</b> (Number)	2,960	4,112	1,105
-----------------------------	-------	-------	-------

Dressed Weight (Metric Tonne)	51.8	72.0	19.3
-------------------------------	------	------	------

<b>Non-Ruminant Local Livestock</b> (Number)	398,258	581,685	528,837
--	---------	---------	---------



	2020	2021	2022
--	------	------	------

### Local and Imported Poultry Production

#### Broiler Chickens

<b>Local</b> (Thousand)	17,523.5	18,994.0	19,316.9
-------------------------	----------	----------	----------

#### Imports

Live (Thousand)	1,913.5	2,601.8	2,098.9
-----------------	---------	---------	---------

Chilled & Frozen (Metric Tonne)	288.0	223.9	-
---------------------------------	-------	-------	---

<b>Slaughtered</b> (Thousand)	17,576.5	20,391.4	20,472.5
-------------------------------	----------	----------	----------

Dressed Weight (Metric Tonne)	26,364.8	30,587.1	30,708.7
-------------------------------	----------	----------	----------

#### Layer Chickens

<b>Local Chicken Eggs</b> (Million)	171.9	172.7	173.9
-------------------------------------	-------	-------	-------

<b>Import Chicken Eggs</b> (Million)	-	0.8	-
--------------------------------------	---	-----	---

#### Fertilized Eggs

<b>Local</b> (Million)	10.9	12.0	20.0
------------------------	------	------	------

<b>Import</b> (Million)	8.6	8.6	5.8
-------------------------	-----	-----	-----



	2020	2021	2022
--	------	------	------

### Forestry

#### Production

Round Timber (Thousand m <sup>3</sup> )	60.3	59.3	47.8
---	------	------	------

Sawn Timber (Thousand m <sup>3</sup> )	29.2	29.2	24.7
--	------	------	------

Mangrove Poles (Thousand Pieces)	29.8	36.1	23.9
----------------------------------	------	------	------

Charcoal Briquette (Thousand Kg)	276.4	282.9	306.6
----------------------------------	-------	-------	-------

Poles (Thousand Pieces)	2.4	1.9	0.6
-------------------------	-----	-----	-----

Wood Components (Thousand m <sup>3</sup> )	8.3	8.2	9.4
--	-----	-----	-----



	2020	2021	2022
<b>Fishery</b>			
<b>Local Production (Metric Tonne)</b>	<b>20,566.8</b>	<b>24,285.9</b>	<b>26,019.8</b>
<b>Capture Industry</b>	<b>13,073.7</b>	<b>15,295.7</b>	<b>16,178.2</b>
Commercial Scale	3,455.7	3,114.9	2,463.4
Small Scale	9,618.1	12,180.7	13,714.8
<b>Aquaculture Industry</b>	<b>3,501.4</b>	<b>4,771.7</b>	<b>5,018.4</b>
Fish in Cages	412.6	271.2	248.4
Farm Prawn	3,045.8	4,481.2	4,753.5
Fresh Water Fish	41.6	17.9	15.4
Crab	1.4	1.4	1.2
<b>Processing Industry</b>	<b>3,991.7</b>	<b>4,218.5</b>	<b>4,823.1</b>
Frozen Seafood Products	3,436.7	3,793.0	4,140.3
Seafood Crackers Products	36.5	33.1	37.1
Value Added Commercial Products	110.3	108.2	104.6
Other Products	388.2	266.4	521.5
Small Scale Products	20.0	18.0	19.6



	2020	2021	2022
<b>Road Casualties (Number)</b>			
Accidents	3,997	3,104	2,131
Injuries	341	343	359
Deaths	11	16	20
<b>Crime (Number) <sup>(6)</sup></b>			
<b>Total Cases</b>	<b>4,747</b>	<b>4,204</b>	<b>3,872</b>
<b>Against</b>			
Person	550	439	455
Property	1,819	1,650	1,105
Penal Code	1,675	1,391	1,747
Misuse of Drug	488	300	338
Other Enactment	215	424	227



	2020	2021	2022
--	------	------	------

#### Climate

##### Mean Temperature (Degree Celcius)

Mean Maximum	32.2	32.0	32.0
Mean Minimum	24.3	23.6	24.1

Mean Relative Humidity (%)	82.0	87.0	91.0
----------------------------	------	------	------

Total Rainfall (Millimetre)	3,300.5	3,815.1	3,733.2
-----------------------------	---------	---------	---------

Bright Sunshine (Daily Mean/hours)	7.3	6.7	6.4
------------------------------------	-----	-----	-----

#### Pensions (Number)

Persons Receiving Old Age Pension by District	39,392	38,477	40,428
---	--------	--------	--------

Brunei Muara	24,809	24,488	25,800
Belait	7,967	7,236	7,582
Tutong	5,388	5,539	5,779
Temburong	1,228	1,214	1,267



	2020	2021	2022
--	------	------	------

#### Number of Arrivals by Purpose of Entry at Brunei International Airport (Persons)

Holiday	24,660	115	10,555
Business	7,151	1,552	8,623
Relatives	6,784	514	6,871
Transit	13,094	41	3,590
Exhibition	83	6	151
Government	1,594	605	2,579
Others	8,959	710	3,332

<b>Total</b>	<b>62,325</b>	<b>3,543</b>	<b>35,701</b>
--------------	---------------	--------------	---------------

- (1) - Excluding Royal Brunei Armed Forces, Royal Brunei Police Force, Gurkha Reserve Unit and daily paid employees.
- (2) - Including schools under Prime Minister's Office, Ministry of Religious Affairs, Ministry of Culture, Youth and Sports and Private schools.
- (3) - Based on number of licenses issued annually by Maritime and Port Authority of Brunei Darussalam. Fishing vessels comprised of fishing boats owned by company and individual. Starting 2020, fishing boats owned by individual are included under pleasure crafts.
- (4) - Mobile Broadband subscription includes both USB dongle/ MIFI and handset.
- (5) - Postal data handled by the Postal Services Department only.
- (6) - Crime cases handled by the Royal Brunei Police Force and Narcotics Control Bureau only.

f.o.b.	- free on board
c.i.f.	- cost, insurance and freight
r	- Revised
p	- Provisional/ Preliminary
USD	- US Dollar
BND	- Brunei Dollar
Kbbl/d	- Thousand Barrels per day
Kboe/d	- Thousand Barrels of Oil Equivalent per day
MMBtu/d	- Million British thermal unit per day
m <sup>3</sup>	- Cubic Metre
MW	- Mega Watt
GWh	- Giga Watt hour
-	- Nil
...	- Not Available

Total inside the tables may not tally due to rounding

<i>MINISTRY</i>	<i>DEPARTMENT(S)</i>
<b><i>PRIME MINISTER'S OFFICE</i></b>	ATTORNEY GENERAL'S CHAMBERS STATE JUDICIARY DEPARTMENT PUBLIC SERVICE DEPARTMENT ROYAL BRUNEI POLICE FORCE NARCOTICS CONTROL BUREAU ENERGY DEPARTMENT
<b><i>MINISTRY OF FINANCE AND ECONOMY</i></b>	DEPARTMENT OF ECONOMIC PLANNING AND STATISTICS TREASURY DEPARTMENT DARUSSALAM ENTERPRISE (DARe)
<b><i>MINISTRY OF HOME AFFAIRS</i></b>	DEPARTMENT OF IMMIGRATION AND NATIONAL REGISTRATION DISTRICT OFFICES
<b><i>MINISTRY OF DEFENCE</i></b>	DEPARTMENT OF DEVELOPMENT AND WORK SERVICES

<i>MINISTRY</i>	<i>DEPARTMENT(S)</i>
<b><i>MINISTRY OF HEALTH</i></b>	DEPARTMENT OF POLICY AND PLANNING
<b><i>MINISTRY OF DEVELOPMENT</i></b>	PUBLIC WORKS DEPARTMENT -DEPARTMENT OF WATER SERVICES -DEPARTMENT OF ROAD
<b><i>MINISTRY OF EDUCATION</i></b>	DEPARTMENT OF PLANNING, DEVELOPMENT AND RESEARCH DEPARTMENT OF HIGHER EDUCATION
<b><i>MINISTRY OF PRIMARY RESOURCES AND TOURISM</i></b>	AGRICULTURE AND AGRIFOOD DEPARTMENT FORESTRY DEPARTMENT FISHERIES DEPARTMENT TOURISM DEVELOPMENT DEPARTMENT

<i>MINISTRY</i>	<i>DEPARTMENT(S)</i>
<i>MINISTRY OF CULTURE, YOUTH AND SPORTS</i>	COMMUNITY DEVELOPMENT DEPARTMENT
<i>MINISTRY OF TRANSPORT AND INFOCOMMUNICATIONS</i>	DEPARTMENT OF CIVIL AVIATION LAND TRANSPORT DEPARTMENT POSTAL SERVICES DEPARTMENT BRUNEI DARUSSALAM METEOROLOGICAL DEPARTMENT MARITIME AND PORT AUTHORITY OF BRUNEI DARUSSALAM AUTHORITY FOR INFO-COMMUNICATIONS TECHNOLOGY INDUSTRY OF BRUNEI DARUSSALAM (AITI)
<i>OTHER AGENCIES</i>	BRUNEI DARUSSALAM CENTRAL BANK (BDCB) TABUNG AMANAH PEKERJA (TAP) BRUNEI INSURANCE AND TAKAFUL ASSOCIATION (BITA) MUARA PORT COMPANY SDN BHD

Department of Statistics  
Department of Economic Planning and Statistics  
Ministry of Finance and Economy  
Brunei Darussalam



673 2233344



@statistics.jpes



<https://deps.mofe.gov.bn>



[info.statistics@jpes.gov.bn](mailto:info.statistics@jpes.gov.bn)



2A, Jalan Ong Sum Ping  
Bandar Seri Begawan BA 1311  
Negara Brunei Darussalam





ISBN 978-99917-72-44-8



9 789991 772448