

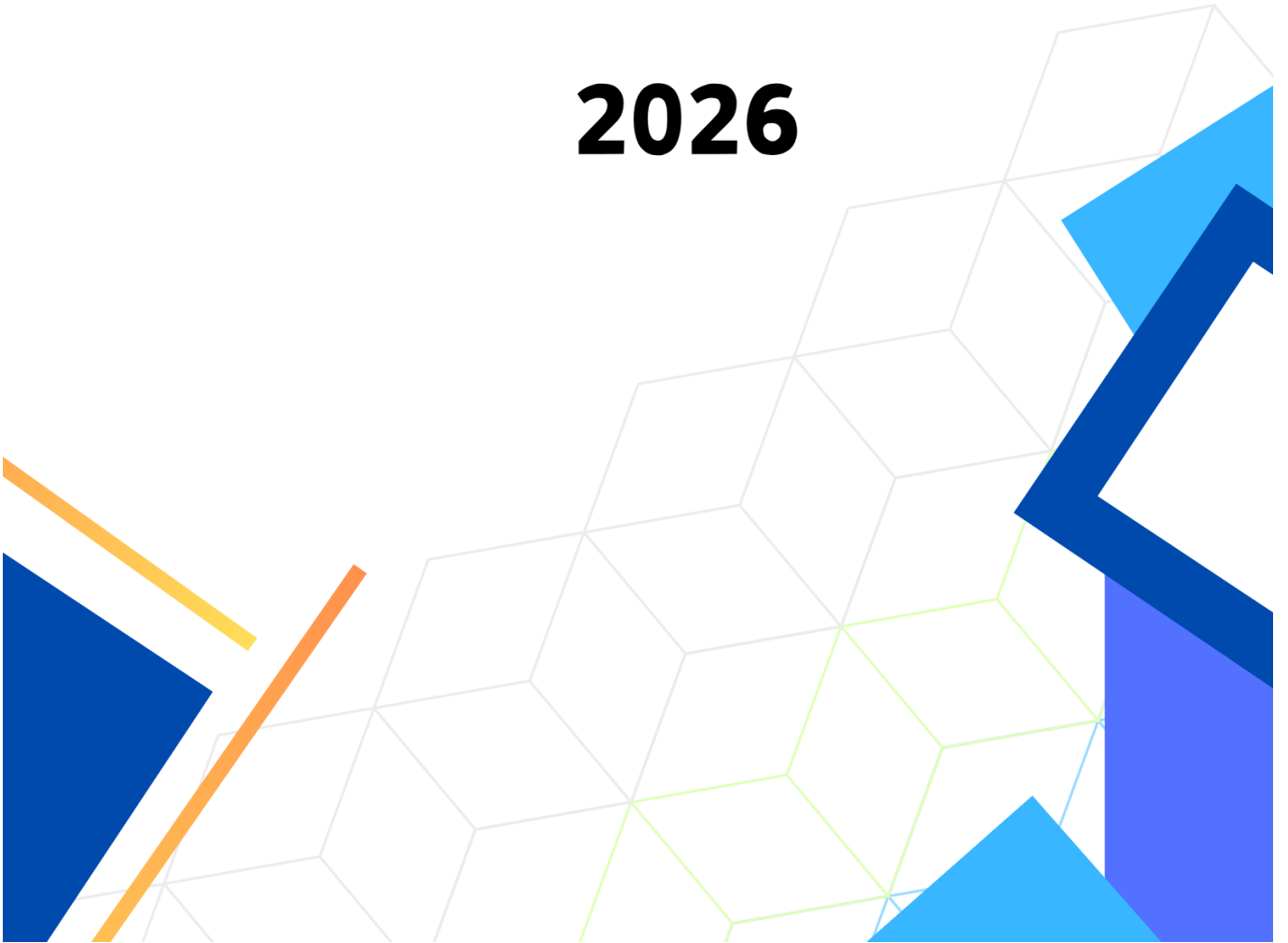


جباتن فرانچغن ايكونومي دان ستاتيستيك
DEPARTMENT OF ECONOMIC PLANNING AND STATISTICS
MINISTRY OF FINANCE AND ECONOMY
BRUNEI DARUSSALAM

INTERNATIONAL MERCHANDISE TRADE STATISTICS

MARCH

2026





Website: deps.mofe.gov.bn
 Email: info.statistics@jpes.gov.bn
 Instagram: @statistics.jpes

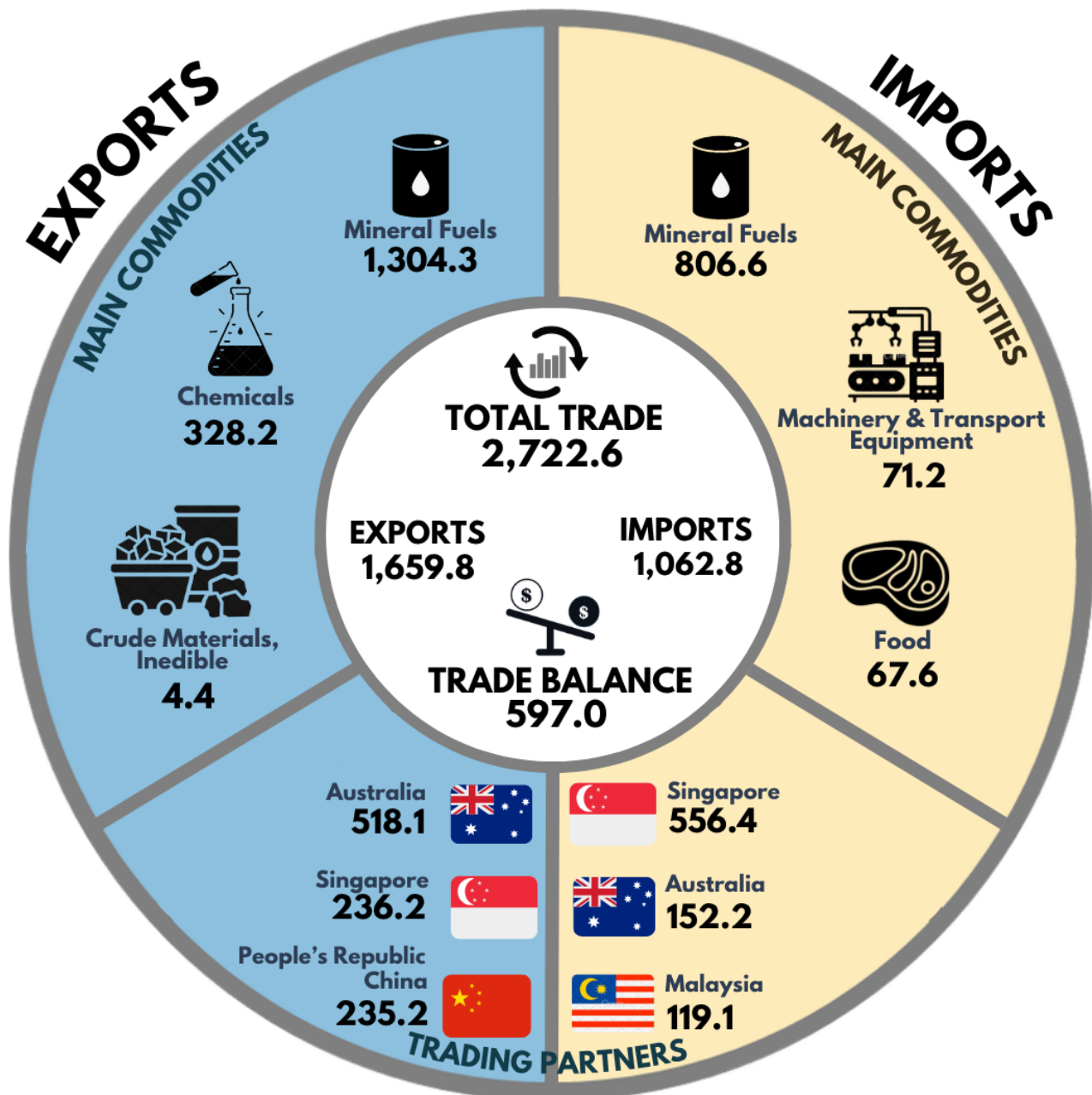


جباتن فرانچغن ايكونومي دان ستاتيستيك
 DEPARTMENT OF ECONOMIC PLANNING AND STATISTICS
 MINISTRY OF FINANCE AND ECONOMY
 BRUNEI DARUSSALAM

INTERNATIONAL MERCHANDISE TRADE STATISTICS

MARCH 2026

BND Million



INTERNATIONAL MERCHANDISE TRADE STATISTICS (IMTS) MARCH 2026

Highlights

Year-on-Year Change

Total trade for March 2026 was BND2,722.6 million, comprising exports of BND1,659.8 million and imports of BND1,062.8 million. This reflected a year-on-year increase of 35.4 per cent from BND2,010.5 million in March 2025.

Furthermore, the trade balance also increased by 21.4 per cent to BND597.0 million (March 2026) from BND491.7 million in March 2025.

Month-on-Month Change

On a month-on-month basis, total trade rose by 88.6 per cent, increasing from BND1,443.3 million in February 2026 to BND2,722.6 million in March 2026.

Table 1: Exports, Imports and Trade Balance

	Value (BND Million)					Change (%)		
	Mar-25	Feb-26	Mar-26 ^P	Jan-Mar	Jan-Mar ^P	Mar-26 ^P	Mar-26 ^P	Jan-Mar 2026
				2025	2026	Mar-25 (y-o-y)	Feb-26 (m-o-m)	YTD
Total Trade	2,010.5	1,443.3	2,722.6	5,746.3	5,990.0	35.4	88.6	4.2
Exports	1,251.1	975.6	1,659.8	3,604.6	3,781.4	32.7	70.1	4.9
Imports	759.4	467.7	1,062.8	2,141.7	2,208.6	40.0	127.2	3.1
Trade Balance	491.7	507.9	597.0	1,462.9	1,572.8	21.4	17.5	7.5

Notes *p* = provisional

m-o-m = month on month

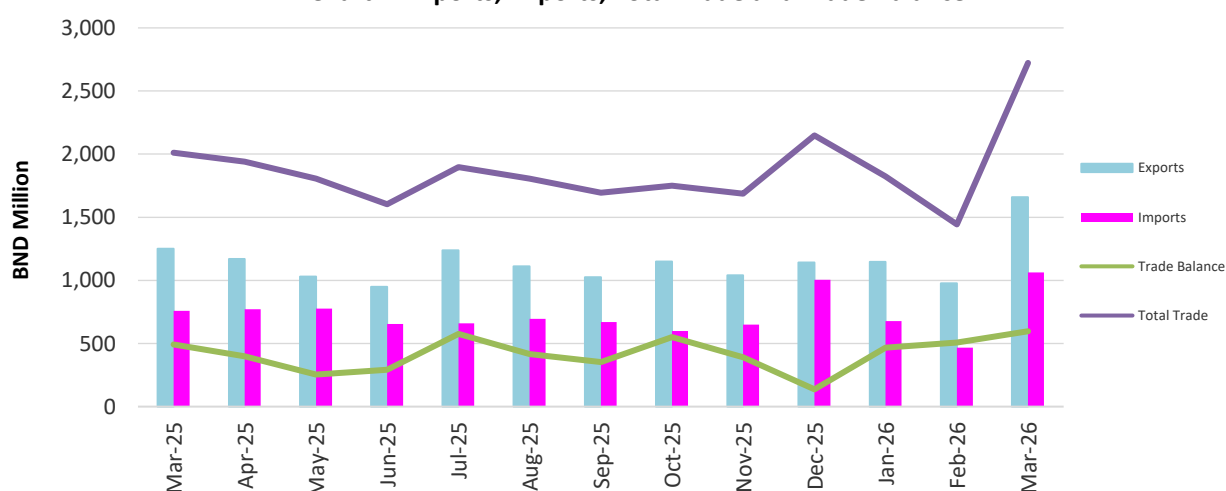
Total Trade = Exports + Imports

y-o-y = year on year

Trade Balance = Exports – Imports

YTD = Year to date

Chart 1: Exports, Imports, Total Trade and Trade Balance



Merchandise Exports

Exports by Commodity Section

On a year-on-year basis, the merchandise exports increased by 32.7 per cent to BND1,659.8 million in March 2026 from BND1,251.1 million in March 2025. Mineral Fuels accounted for the highest share of total exports at 78.6 per cent (BND1,304.3 million), followed by Chemicals at 19.8 per cent (BND328.2 million) and Machinery and Transport Equipment at 0.7 per cent (BND11.2 million).

Meanwhile, on a month-on-month basis, the merchandise exports also increased by 70.1 per cent from BND975.6 million in February 2026 to BND1,659.8 million in March 2026.

Table 2: Exports by Commodity Sections

Section	Value (BND Million)			Change (%)		Contribution (%)
	Mar-25	Feb-26	Mar-26 ^P	Mar-26 ^P	Mar-26 ^P	
				Mar-25 (y-o-y)	Feb-26 (m-o-m)	Mar-26
Food	1.6	0.9	1.6	0.0	77.8	0.1
Beverages and Tobacco	0.0	0.0	0.0	23.8	0.0	0.0
Crude Materials Inedible	1.6	4.2	4.4	175.0	4.8	0.3
Mineral Fuels	972.6	674.4	1,304.3	34.1	93.4	78.6
Animal And Vegetable Oils and Fats	0.1	0.1	0.1	0.0	0.0	0.0
Chemicals	251.5	279.2	328.2	30.5	17.6	19.8
Manufactured Goods	6.0	1.1	4.0	-33.3	263.6	0.2
Machinery and Transport Equipment	13.4	7.5	11.2	-16.4	49.3	0.7
Miscellaneous Manufactured Articles	1.9	3.4	2.8	47.4	-17.6	0.2
Miscellaneous Transactions	2.4	4.8	3.2	33.3	-33.3	0.2
TOTAL	1,251.1	975.6	1,659.8	32.7	70.1	100.0

Notes: *p* = provisional *y-o-y* = year-on-year *m-o-m* = month-on-month

Main Exports

On a year-on-year basis, the main exports increased by 33.4 per cent in March 2026, mainly due to increases in both exports of Mineral Fuels and Chemicals by 34.1 per cent and 30.7 per cent respectively.

In March 2026, the increase in exports of Mineral Fuels was driven by an 89.3 per cent rise in Other Petroleum Products exports, from BND368.4 million in March 2025 to BND697.2 million in March 2026. Furthermore, the exports of Crude Oil also increased by 24.4 per cent. On the other hand, the exports of LNG and Other Gas Products decreased by 21.9 per cent and 9.6 per cent respectively.

The exports of Chemicals also increased by 30.7 per cent, led by a 34.8 per cent growth in Chemicals and Related Products from BND232.1 million to BND312.9 million. However, the exports of Methanol decreased by 21.4 per cent from BND18.2 million to BND14.3 million in March 2026.

On a month-on-month basis, the main exports also recorded a decrease of 71.3 per cent in March 2026. This was due to increases in both exports of Mineral Fuels and Chemical by 93.4 per cent and 17.6 per cent respectively.

Table 3: Main Exports

	Value (BND Million)			Change %	
	Mar-25	Feb-26	Mar-26 ^P	Mar-26 ^P	Mar-26 ^P
				Mar-25 (y-o-y)	Feb-26 (m-o-m)
Exports	1,251.1	975.6	1,659.8	32.7	70.1
<i>Of which</i>					
Main Exports	1,223.0	952.7	1,631.5	33.4	71.3
Mineral Fuels	972.7	674.4	1,304.3	34.1	93.4
Crude Oil:					
Value (BND Million)	280.8	200.7	349.3	24.4	74.0
Volume (kbbbl/day)	88.76	76.24	81.88	-7.8	7.4
Price (USD/bbl)	76.28	74.83	107.87	41.4	44.2
Liquefied Natural Gas:					
Value (BND Million)	281.9	168.1	220.2	-21.9	31.0
Volume (MMBtu/day)	664,109	610,564	658,355	-0.9	7.8
Price (USD/MMBtu)	10.25	7.78	8.44	-17.7	8.5
Other Petroleum Products:					
Value (BND Million)	368.4	271.9	697.2	89.3	156.4
Other Gas Products:					
Value (BND Million)	41.6	33.7	37.6	-9.6	11.6
Chemicals	250.3	278.3	327.2	30.7	17.6
Methanol:					
Value (BND Million)	18.2	8.0	14.3	-21.4	78.8
Chemicals and Related Products:					
Value (BND Million)	232.1	270.3	312.9	34.8	15.8

Source: Royal Brunei Customs and Excise Department, MOFE and Department of Energy, PMO

Notes *p* = provisional

y-o-y = year on year

m-o-m = month on month

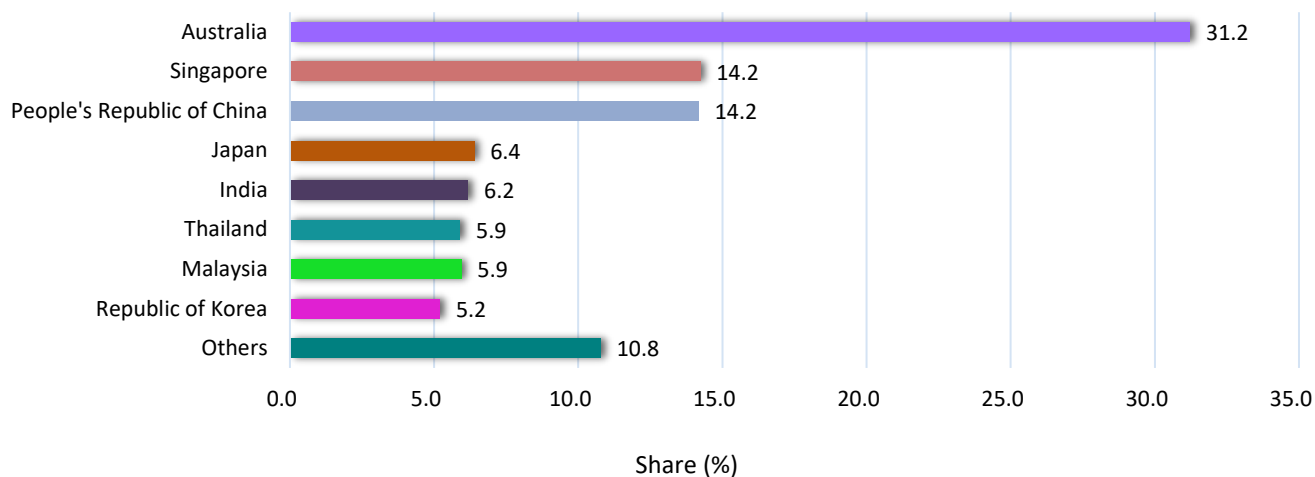
kbbbl = thousand barrels

MMBtu = million metric British thermal units

Exports by Trading Partners

The highest share of exports in March 2026 went to Australia with a share of 31.2 per cent, followed by Singapore and People’s Republic of China both at 14.2 per cent.

Chart 2: Share of Exports by Trading Partners



Merchandise Imports

Imports by Commodity Section

In March 2026, merchandise imports increased by 40.0 per cent to BND1,062.8 million compared to BND759.4 million in March 2025. Mineral Fuels recorded the highest share of total imports at 75.9 per cent (BND806.6 million) followed by Machinery and Transport Equipment (BND71.2 million) and Food (BND67.6 million).

Meanwhile, on a month-on-month basis, total imports also recorded an increase of 127.2 per cent, mainly contributed to the increases in the imports value of Mineral Fuels; Miscellaneous Manufactured Articles; and Food.

Table 4: Imports by Commodity Sections

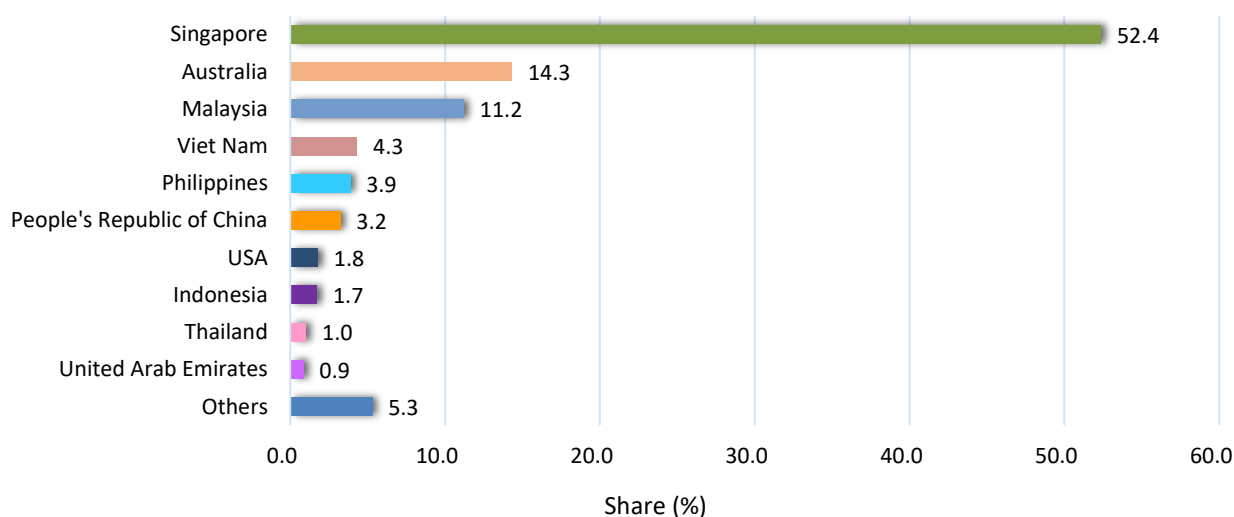
Section	Value (BND Million)			Change (%)		Contribution (%)
	Mar-25	Feb-26	Mar-26 ^p	Mar-26 ^p	Mar-26 ^p	
				Mar-25	Feb-26	(y-o-y)
Food	64.0	65.5	67.6	5.6	3.2	6.4
Beverages and Tobacco	5.7	4.5	4.1	-28.1	-8.9	0.4
Crude Materials Inedible	2.6	2.9	1.6	-38.5	-44.8	0.2
Mineral Fuels	512.5	172.1	806.6	57.4	368.7	75.9
Animal And Vegetable Oils and Fats	2.6	2.2	2.1	-19.2	-4.5	0.2
Chemicals	29.5	45.2	36.8	24.7	-18.6	3.5
Manufactured Goods	39.0	31.8	31.5	-19.2	-0.9	3.0
Machinery and Transport Equipment	71.5	117.0	71.2	-0.4	-39.1	6.7
Miscellaneous Manufactured Articles	31.3	25.5	41.0	31.0	60.8	3.9
Miscellaneous Transactions	0.6	1.0	0.2	-66.7	-80.0	0.0
TOTAL	759.4	467.7	1,062.8	40.0	127.2	100.0

Notes: *p* = provisional *y-o-y* = year-on-year *m-o-m* = month-on-month

Imports by Trading Partners

The highest share of imports in March 2026 came from Singapore, accounting for 52.4 per cent, followed by Australia (14.3 per cent) and Malaysia (11.2 per cent).

Chart 3: Share of Imports by Trading Partners



Imports by End-Use Categories

In March 2026, the import of Intermediate Goods was valued at BND611.1 million, accounting for 57.5 per cent of total imports. This was followed by Capital Goods (BND425.0 million or 40.0 per cent of total imports) and Consumption Goods (BND26.7 million or 2.5 per cent of total imports).

Chart 4: Share (%) of Imports by End Use Categories, March 2026

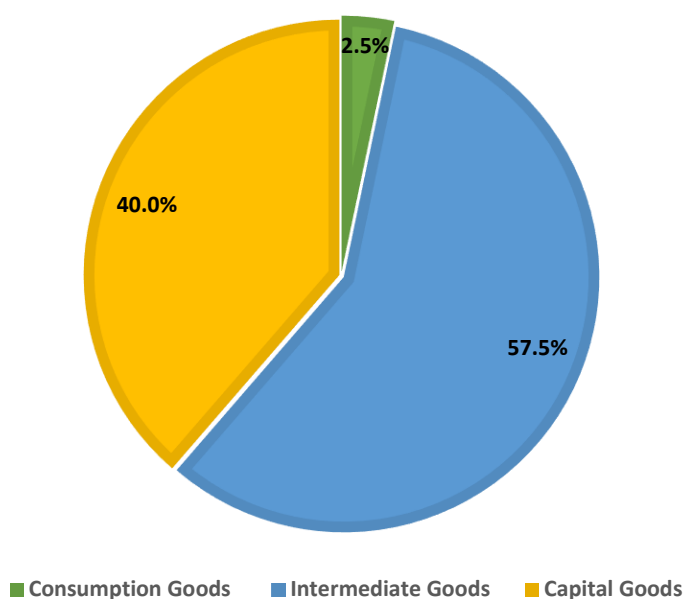


Table 5: Main Contribution to Imports by End Use Categories

Description	Value (BND Million)			Share (%)		
	Mar-25	Feb-26	Mar-26 ^p	Mar-25	Feb-26	Mar-26 ^p
Capital Goods	280.1	160.4	425.0	36.9	34.3	40.0
Mineral Fuels	205.7	64.7	345.7	27.1	13.8	32.5
Machinery and Transport Equipment	32.2	52.6	32.0	4.2	11.3	3.0
Miscellaneous Manufactured Articles	11.5	9.1	16.9	1.5	1.9	1.6
Others	30.7	34.0	30.4	4.1	7.3	2.9
Intermediate Goods	445.0	276.6	611.1	58.6	59.1	57.5
Mineral Fuels	299.6	107.3	460.7	39.5	22.9	43.3
Food	49.2	49.9	52.0	6.5	10.7	4.9
Machinery and Transport Equipment	36.5	59.7	36.3	4.8	12.8	3.4
Others	59.7	59.7	62.1	7.8	12.7	5.9
Consumption Goods	34.3	30.7	26.7	4.5	6.6	2.5
Food	14.8	15.7	15.7	1.9	3.3	1.5
Machinery and Transport Equipment	2.9	4.7	2.8	0.4	1.0	0.3
Miscellaneous Manufactured Articles	3.0	2.7	2.7	0.4	0.6	0.3
Others	13.6	7.6	5.5	1.8	1.7	0.4
Total	759.4	467.7	1,062.8	100.0	100.0	100.0

Notes: *p = provisional* *Figures may not tally due to rounding.*

Main Mode of Transport

The main mode of transport for Brunei Darussalam's international merchandise trading is sea transport, followed by air and land.

In March 2026, the total value of goods transported by sea for both exports and imports were BND2,614.0 million. The relative share of sea transport accounted for 99.1 per cent of exports and 91.1 per cent of imports. Goods transported by air contributed about 0.8 per cent of goods exports and 6.1 per cent of goods imports, while cross-border trading via land recorded 0.1 per cent of exported goods and 2.8 per cent of imported goods.

Table 6: Exports and Imports by Mode of Transport

Mode of Transport	Value (BND Million)			Contribution (%)		
	Mar-25	Feb-26	Mar-26 ^p	Mar-25	Feb-26	Mar-26 ^p
Exports	1,251.1	975.6	1,659.8	100.0	100.0	100.0
Air	11.5	9.8	12.5	0.9	1.0	0.8
Sea	1,238.0	964.7	1,645.6	99.0	98.9	99.1
Land	1.6	1.1	1.7	0.1	0.1	0.1
Others	-	-	-	-	-	-
Imports	759.4	467.7	1,062.8	100.0	100.0	100.0
Air	47.7	86.7	65.0	6.3	18.5	6.1
Sea	683.7	355.4	968.4	90.0	76.0	91.1
Land	28.0	25.6	29.4	3.7	5.5	2.8
Others	-	0.0	0.0	-	0.0	0.0
Total	2,010.5	1,443.3	2,722.6	100.0	100.0	100.0
Air	59.1	96.5	77.5	2.9	6.7	2.8
Sea	1,921.7	1,320.1	2,614.0	95.6	91.5	96.0
Land	29.7	26.6	31.1	1.5	1.8	1.1
Others	-	0.0	0.0	-	0.0	0.0

Notes: ^p = provisional '-' = Nil Figures may not tally due to rounding.

TECHNICAL NOTES

1. Introduction

The International Merchandise Trade Statistics (IMTS) are compiled on a monthly basis based on the imports and exports data submitted by the Royal Customs and Excise Department, Ministry of Finance and Economy through customs declarations, and the Department of Energy, Prime Minister's Office. The general system of recording IMTS adopted by Brunei Darussalam covers imports, domestic exports and re-exports that have been cleared through customs.

2. Coverage of Merchandise

All goods imported into or exported from Brunei Darussalam are included in the IMTS.

The following classes of goods are excluded:

- currency notes and coins in circulation;
- personal and household effects which do not incur any Brunei Darussalam customs duty and which are taken by passengers for their own use;
- stores and fuel supplied to Brunei ships and aircraft;
- articles on loan or rent, for example, equipment for oil surveys and experimental drilling, etc.;
- goods in transit;
- fish and other marine products landed from Brunei Darussalam fishing vessels direct from fishing grounds;
- goods imported and exported by or on behalf of diplomatic services; and
- goods imported by the armed forces.

3. Time of Recording

Brunei Darussalam uses the 'release date' as its time of recording, which provides the time/date that stipulated in source documents when goods enter or leave the economic territory.

4. Valuation

Imports are valued at CIF, that is, the value of goods at the frontier of the exporting trading partners plus the cost of insurance and freight and any other charges when sold for export to Brunei Darussalam. Custom duties are not included in the value of imports.

Exports are valued at FOB, that is, the value of goods to be purchased abroad up to the point where the goods are deposited on board the outgoing vessel, aircraft and/or vehicle. Goods on consignment are valued at the current import price for imports and the current export price for exports.

Goods are recorded at their market value. Values are reported in millions of Brunei dollars. Data reported in foreign currencies are converted into local currency at the prevailing market exchange rate on the date of permit clearance.

5. Commodity Classification

Commodity items reported are classified in accordance with the Brunei Darussalam Trade Classification and Customs Duties 2022. This classification incorporates the ASEAN Harmonized Tariff Nomenclature (AHTN), which is based on the 8-digits Harmonised Commodity Description and Coding System Nomenclature (H.S) developed by the World Customs Organisation (WCO).

For International comparability in this report, import and export are classified according to the United Nations Standard Trade Classification, Revision 4 (SITC Rev. 4).

The imports data can also be categorized according to their end-use categories, namely Capital, Intermediate or Consumption based on Brunei Darussalam's Broad Economic Categories (BDBEC), which is adapted from United Nation, the Fifth revision of Broad Economic Categories.

The BDBEC is classified in accordance with Broad Economic Category introduced by the United Nations and as a means for converting data compiled in terms of SITC into end-use categories.

The BDBEC provides categories which can be aligned into 3 classes of goods in the System of National Accounts (SNA):

- Capital Goods are used as a means of producing other goods or services.
- Intermediate Goods are semi-processed, semi-manufactured and industrial-supplies; and transformed or used up in the production of goods and services.
- Consumption Goods are final product mainly used by households for final consumption.

6. Mode of transport

Merchandise trade in goods by mode of transport are compiled according to the means of transport used when goods enter or leave the economic territory of the economy. The following classifications are the main categories of the mode of transport:

1. Air;
2. Sea;
3. Land; and
4. Others include postal consignments, mail or courier shipments and goods crossing the border not to attribute a transaction to any specific mode of transport categories.

The method of transport used for the carriage of goods is recorded as the mode of transport such as aircraft, vehicle, vessel and other type of transport of goods. The mode of transport for imports refers to the last mode of transport by which the cargo was transported to the port of clearance into the economy whereas, for exports the mode of transport information records the last mode of transport with which cargo crossed the customs border on its exit from the economy.

Appendix 1: Exports, Imports, Total Trade and Trade Balance

Period	Value (BND Million)					
	Exports			Imports	Total Trade	Trade Balance
	Total	Domestic Exports	Re-Exports			
2025	13,454.8	13,109.1	345.7	8,623.1	22,077.9	4,831.7
Q1	3,604.6	3,508.9	95.7	2,141.7	5,746.3	1,462.9
Q2	3,147.2	3,097.0	50.2	2,201.6	5,348.8	945.6
Q3	3,371.8	3,284.0	87.9	2,025.9	5,397.7	1,346.0
Q4	3,331.2	3,219.3	111.9	2,253.9	5,585.1	1,077.3
Jan	1,229.5	1,210.2	19.2	712.6	1,942.1	516.9
Feb	1,124.0	1,071.3	52.8	669.7	1,793.7	454.3
Mar	1,251.1	1,227.4	23.7	759.4	2,010.5	491.7
Apr	1,169.4	1,150.3	19.1	771.0	1,940.4	398.5
May	1,030.1	1,007.3	22.8	775.6	1,805.8	254.5
Jun	947.6	939.4	8.2	655.0	1,602.6	292.6
Jul	1,236.7	1,213.1	23.7	660.0	1,896.8	576.7
Aug	1,111.0	1,066.4	44.6	695.1	1,806.1	415.8
Sep	1,024.1	1,004.5	19.6	670.7	1,694.9	353.4
Oct	1,150.1	1,118.8	31.3	600.1	1,750.2	550.0
Nov	1,039.1	1,012.8	26.3	648.7	1,687.8	390.3
Dec	1,142.0	1,087.7	54.3	1,005.1	2,147.1	136.9
2025 (YTD)	3,781.4	3,718.3	63.1	2,208.6	5,990.0	1,572.8
Jan	1,146.0	1,120.3	25.7	678.1	1,824.1	467.9
Feb	975.6	957.8	17.8	467.7	1,443.3	507.9
Mar ^p	1,659.8	1,640.2	19.6	1,062.8	2,722.6	597.0

Notes:

Total Trade = Exports + Imports Trade Balance = Exports – Imports p = provisional YTD = Year to Date

Figures may not tally due to rounding.

Appendix 2: Merchandise Exports by Commodity Section

IMTS March 2025

Period	Value (BND Million)										
	Total	Food	Beverages and Tobacco	Crude Materials Inedible	Mineral Fuels	Animal and Vegetable Oils and Fats	Chemicals	Manufactured Goods	Machinery and Transport Equipment	Miscellaneous Manufactured Articles	Miscellaneous Transactions
2025	13,454.8	13.9	0.1	28.6	10,088.6	0.6	2,965.0	65.2	217.3	30.8	44.7
Jan	1,229.5	0.8	0.0	2.7	938.7	0.0	266.3	5.2	10.0	3.5	2.2
Feb	1,124.0	1.6	0.0	1.6	775.4	0.1	288.2	9.5	38.3	3.3	6.1
Mar	1,251.1	1.6	0.0	1.6	972.6	0.1	251.5	6.0	13.4	1.9	2.4
Apr	1,169.4	2.1	0.0	3.1	870.8	0.0	273.3	7.4	8.3	0.8	3.7
May	1,030.1	1.9	0.0	2.8	728.4	0.1	270.4	10.7	10.4	3.1	2.2
Jun	947.6	0.1	0.0	0.8	736.7	0.0	202.0	0.9	6.4	0.8	0.1
Jul	1,236.7	0.6	0.0	1.9	939.3	0.0	271.3	3.0	13.3	2.9	4.3
Aug	1,111.0	1.2	0.0	2.3	862.6	0.1	199.4	4.4	36.4	1.6	3.0
Sep	1,024.1	0.8	0.0	2.5	785.9	0.1	214.3	4.8	8.8	1.8	5.3
Oct	1,150.1	1.4	0.0	2.7	884.5	0.0	231.1	5.1	16.8	4.0	4.4
Nov	1,039.1	0.9	0.0	4.4	762.9	0.1	244.3	5.4	10.0	3.3	7.8
Dec	1,142.0	0.8	0.0	2.1	830.8	0.1	253.0	2.9	45.3	3.9	3.1
2026 (YTD)	3,781.4	3.7	0.0	13.0	2,843.8	0.2	856.8	9.8	28.1	8.9	17.3
Jan	1,146.0	1.2	0.0	4.4	865.1	0.1	249.4	4.6	9.3	2.7	9.2
Feb	975.6	0.9	0.0	4.2	674.4	0.1	279.2	1.1	7.5	3.4	4.8
Mar ^p	1,659.8	1.6	0.0	4.4	1,304.3	0.1	328.2	4.0	11.2	2.8	3.2

 Notes: ^p = provisional

YTD = Year to Date

Figures may not tally due to rounding.

Appendix 3: Merchandise Imports by Commodity Section

IMTS March 2025

Period	Value (BND Million)										
	Total	Food	Beverages and Tobacco	Crude Materials Inedible	Mineral Fuels	Animal and Vegetable Oils and Fats	Chemicals	Manufactured Goods	Machinery and Transport Equipment	Miscellaneous Manufactured Articles	Miscellaneous Transactions
2025	8,623.1	686.3	43.3	30.4	5,645.4	26.4	372.3	435.3	931.4	444.5	7.7
Jan	712.6	67.5	4.0	3.8	463.8	2.6	38.0	40.3	65.5	26.6	0.5
Feb	669.7	51.2	3.9	1.2	474.9	1.5	26.7	27.8	58.6	23.1	0.8
Mar	759.4	64.0	5.7	2.6	512.5	2.6	29.5	39.0	71.5	31.3	0.6
Apr	771.0	65.3	4.3	2.6	506.5	2.6	29.1	47.4	92.1	20.1	0.9
May	775.6	61.8	3.1	1.4	534.5	2.7	39.7	33.7	75.3	23.0	0.3
Jun	655.0	22.7	1.1	2.9	514.5	0.4	19.2	20.0	54.1	19.8	0.3
Jul	660.0	39.1	2.6	1.5	390.8	2.3	24.2	26.2	85.1	87.7	0.7
Aug	695.1	60.1	3.5	5.3	411.6	2.9	30.0	47.0	109.9	24.2	0.5
Sep	670.7	54.3	3.2	1.2	413.4	1.8	36.0	28.8	78.4	52.9	0.7
Oct	600.1	61.7	4.3	3.2	335.2	2.0	33.2	41.3	74.4	43.6	1.3
Nov	648.7	65.3	3.7	1.6	426.4	2.2	27.4	28.4	69.3	23.7	0.6
Dec	1,005.1	73.2	4.0	3.0	661.3	2.8	39.3	55.3	97.2	68.6	0.4
2025 (YTD)	2,208.6	210.0	12.9	7.1	1,380.7	6.6	110.1	92.7	276.3	110.2	2.0
Jan	678.1	76.8	4.3	2.6	402.0	2.3	28.1	29.4	88.1	43.7	0.8
Feb	467.7	65.5	4.5	2.9	172.1	2.2	45.2	31.8	117.0	25.5	1.0
Mar ^p	1,062.8	67.6	4.1	1.6	806.6	2.1	36.8	31.5	71.2	41.0	0.2

 Notes: ^p = provisional

Figures may not tally due to rounding.

Appendix 4: Exports of Oil and Gas and Non-Oil and Gas Sector

Period	Exports	Value (BND Million)		Contribution (%)	
		Oil and Gas ⁽¹⁾ Sector	Non-Oil and ⁽²⁾ Gas Sector	Oil and Gas Sector	Non-Oil and Gas Sector
2025	13,454.8	5,336.6	8,118.2	39.7	60.3
Q1	3,604.6	1,423.8	2,180.8	39.5	60.5
Q2	3,147.2	1,246.2	1,901.0	39.6	60.4
Q3	3,371.8	1,424.1	1,947.7	42.2	57.8
Q4	3,331.2	1,242.5	2,088.7	37.3	62.7
Jan	1,229.5	476.8	752.7	38.8	61.2
Feb	1,124.0	384.3	739.7	34.2	65.8
Mar	1,251.1	562.7	688.4	45.0	55.0
Apr	1,169.4	467.0	702.4	39.9	60.1
May	1,030.1	385.6	644.5	37.4	62.6
Jun	947.6	393.6	554.0	41.5	58.5
Jul	1,236.7	532.5	704.2	43.1	56.9
Aug	1,111.0	473.0	638.0	42.6	57.4
Sept	1,024.1	418.6	605.5	40.9	59.1
Oct	1,150.1	456.2	693.9	39.7	60.3
Nov	1,039.1	406.5	632.6	39.1	60.9
Dec	1,142.0	379.8	762.2	33.3	66.7
2026 (YTD)	3,781.4	1,446.0	2,335.4	38.2	61.8
Jan	1,146.0	507.8	638.2	44.3	55.7
Feb	975.6	368.7	606.9	37.8	62.2
Mar ^p	1,659.8	569.5	1,090.3	34.3	65.7

*Notes:**(1) – Includes Crude Oil and LNG**(2) – Includes Methanol and Other Petroleum and Gas Products**p = provisional**Figures may not tally due to rounding.*

Appendix 5: Exports and Imports by Trading Partners

Trading Partners	Value (BND Million)			Change (%)	
	Mar-25	Feb-26	Mar-26 ^p	Mar-26 ^p	Mar-26 ^p
				Mar-25 (y-o-y)	Feb-26 (m-o-m)
Exports to Trading Partners					
Australia	193.5	245.2	518.1	167.8	111.3
Singapore	98.1	73.5	236.2	140.8	221.4
People's Republic of China	246.6	207.1	235.2	-4.6	13.6
Japan	177.8	88.2	106.1	-40.3	20.3
India	0.1	0.1	102.5	102,400.0	102,400.0
Thailand	156.7	35.0	97.9	-37.5	179.7
Malaysia	12.2	8.8	98.7	-14.1	1,021.6
Republic of Korea	100.5	34.8	86.3	709.0	148.0
Others	265.6	282.9	178.8	-32.7	-36.8
Total	1,251.1	975.6	1,659.8	32.7	70.1
Imports from Trading Partners					
Singapore	26.3	21.2	556.4	2,015.6	2,524.5
Australia	2.5	69.6	152.2	5,988.0	118.7
Malaysia	207.8	115.3	119.1	-42.7	3.3
Viet Nam	2.1	33.2	45.9	2,085.7	38.3
Philippines	50.5	0.6	41.2	-18.4	6,766.7
People's Republic of China	46.6	58.3	34.4	-26.2	-41.0
USA	18.1	25.4	18.9	4.4	-25.6
Indonesia	20.1	18.9	18.4	-8.5	-2.6
Thailand	8.9	8.3	10.9	22.5	31.3
United Arab Emirates	33.6	5.1	9.1	-72.9	78.4
Others	342.9	111.8	56.3	-83.6	-49.6
Total	759.4	467.7	1,062.8	40.0	127.2

Notes: *p* = provisional *y-o-y* = year-on-year *m-o-m* = month-on-month
 Figures may not tally due to rounding.

Appendix 6: Imports by End Use Categories

Period	Value (BND Million)			
	Imports	Capital	Intermediate	Consumption
2025	8,623.1	3,251.8	5,047.3	324.0
Q1	2,141.7	767.2	1,287.4	87.1
Q2	2,201.6	859.2	1,268.8	73.6
Q3	2,025.9	787.3	1,164.1	74.5
Q4	2,253.9	838.1	1,327.0	88.8
Jan	712.6	254.0	427.6	31.0
Feb	669.7	233.1	414.8	21.8
Mar	759.4	280.1	445.0	34.3
Apr	771.0	295.5	442.1	33.4
May	775.6	299.9	450.4	25.4
Jun	655.0	263.8	376.3	14.8
Jul	660.0	265.4	373.0	21.6
Aug	695.1	259.7	407.1	28.3
Sep	670.7	262.2	384.0	24.6
Oct	600.1	206.5	365.4	28.1
Nov	648.8	236.3	386.7	25.8
Dec	1,005.1	395.3	574.9	34.9
2026 (YTD)	2,208.6	828.2	1,292.4	88.0
Jan	678.1	242.8	404.7	30.6
Feb	467.7	160.4	276.6	30.7
Mar ^p	1,062.8	425.0	611.1	26.7

Notes: p = provisional YTD = Year to Date

Figures may not tally due to rounding.

Appendix 7: Merchandise Goods by Mode of Transport

Period	Value (BND Million)							
	Exports				Imports			
	Air	Sea	Land	Others	Air	Sea	Land	Others
2025	228.9	13,207.2	18.7	-	768.7	7,542.0	312.3	0.2
Q1	61.6	3,538.1	5.0	-	149.1	1,912.0	80.6	0.0
Q2	29.8	3,112.2	5.1	-	149.1	1,981.3	71.1	0.0
Q3	59.9	3,307.5	4.4	-	236.2	1,719.0	70.7	0.0
Q4	77.6	3,249.4	4.1	-	234.4	1,929.7	89.9	0.0
2025	228.9	13,207.2	18.7	-	768.7	7,542.0	312.3	0.0
Jan	9.0	1,218.9	1.6	-	55.8	630.1	26.6	0.0
Feb	41.1	1,081.2	1.8	-	45.6	598.1	26.0	0.0
Mar	11.5	1,238.0	1.6	-	47.7	683.7	28.0	-
Apr	11.0	1,156.2	2.2	-	46.0	698.6	26.3	0.0
May	12.5	1,015.5	2.2	-	59.7	688.5	27.4	0.0
Jun	6.4	940.5	0.7	...	43.4	594.2	17.4	-
Jul	11.9	1,223.3	1.5	...	79.2	559.3	21.6	-
Aug	34.6	1,074.8	1.6	-	74.6	595.8	24.8	0.0
Sep	13.4	1,009.4	1.3	-	82.5	563.9	24.3	0.0
Oct	16.7	1,131.6	1.8	-	70.4	502.5	27.2	0.0
Nov	16.8	1,020.9	1.3	-	56.9	561.3	30.5	0.0
Dec	44.1	1,097.0	1.0	-	107.0	865.9	32.2	0.0
2026 (YTD)	40.1	3,736.8	4.6	-	225.0	1,893.3	90.3	0.1
Jan	17.7	1,126.5	1.8	-	73.3	569.5	35.3	-
Feb	9.8	964.7	1.1	-	86.7	355.4	25.6	0.0
Mar ^p	12.5	1,645.6	1.7	-	65.0	968.4	29.4	0.0

Notes: p = provisional '-' = Nil
 Figures may not tally due to rounding.