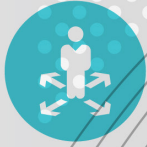




# Brunei Darussalam Key Indicators 2024



Department of Economic Planning and Statistics  
Ministry of Finance and Economy  
Brunei Darussalam

# BRUNEI DARUSSALAM KEY INDICATORS 2024

**Perpustakaan Dewan Bahasa dan Pustaka Brunei**  
**Pengkatalogan Data-dalam-penerbitan**

BRUNEI Darussalam Key Indicators 2024. --Bandar Seri Begawan :  
Department of Economic Planning and Statistics, Ministry of Finance and Economy, 2025.  
80 pages. 13.7 cm x 18.0 cm.  
ISBN 978-99917-72-66-0 (eBook)

1. Economic indicators--Brunei Darussalam--Statistics--Periodicals
  2. Brunei Darussalam--Economic conditions--Statistics--Periodicals
- I. Brunei Darussalam. Department of Economic Planning and Statistics  
II. Brunei Darussalam. Jabatan Perancangan Ekonomi dan Statistik

330.905955 BRU (DDC 23)



**DEPARTMENT OF STATISTICS**  
**DEPARTMENT OF ECONOMIC PLANNING AND STATISTICS**  
**MINISTRY OF FINANCE AND ECONOMY**  
**BRUNEI DARUSSALAM**

# TABLE OF CONTENTS

	PAGE
INFOGRAPHIC	i - iv
1. Population	1 - 2
2. Labour Force	3 - 4
3. Vital Statistics	5 - 7
4. Gross Domestic Product	8 - 22
5. International Merchandise Trade Statistics	23 - 28
6. Foreign Direct Investment	29 - 32
7. Consumer Price Index	33 - 34
8. International Merchandise Trade Index	35 - 38
9. Oil and Gas	39 - 40
10. Banking and Finance	41 - 44
11. Government Finance	45 - 46
12. Education	47 - 50
13. Health	51 - 52
14. Transport	53 - 54
15. Communication	55
16. Utilities	56
17. Primary Sector	57 - 59
18. Miscellaneous	60 - 61
19. Notes	62 - 63
20. List of Sources	64 - 65
21. Contact Info	66





# POPULATION 2024

TOTAL POPULATION **455,500** Persons

## GENDER (Persons)



**MALE**

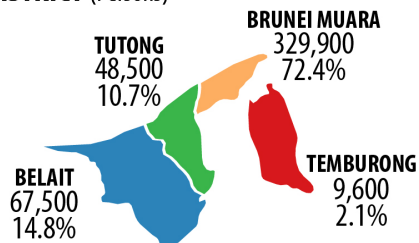
**240,700**  
52.8%



**FEMALE**

**214,800**  
47.2%

## DISTRICT (Persons)



## RACE (Persons)



Race	Population	Percentage
MALAY	335,500	73.7%
CHINESE	43,800	9.6%
OTHERS	76,200	16.7%

## RESIDENTIAL STATUS (Persons)



**BRUNEI  
CITIZENS**  
346,500  
76.1%



**PERMANENT  
RESIDENTS**  
26,300  
5.8%



**TEMPORARY  
RESIDENTS**  
82,700  
18.1%

## AGE GROUP (Persons)



**0 to 14**  
90,700  
19.9%



**15 to 64**  
331,700  
72.8%



**65 and Above**  
33,100  
7.3%

# GROSS DOMESTIC PRODUCT 2024



Value in BND Million  
at Current Prices

**20,659.3**

Value in BND Million  
at Constant Prices

**19,703.3**

GDP Growth

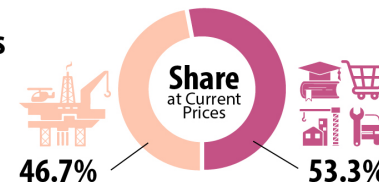
**4.2%**

## GDP BY PRODUCTION

BY OIL AND GAS & NON-OIL AND GAS

### Growth Rate at Constant Prices

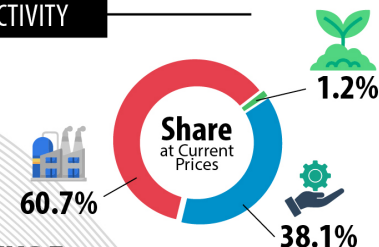
Oil and Gas **5.5%**  
Non-oil and Gas **3.1%**



BY KIND OF ECONOMIC ACTIVITY

### Growth Rate at Constant Prices

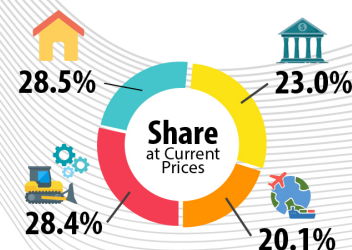
Industry **5.7%**  
Agriculture, Forestry & Fishery **4.1%**  
Services **2.1%**



## GDP BY EXPENDITURE

### Growth Rate at Constant Prices

Household Final Consumption Expenditure **5.9%**  
Government Final Consumption Expenditure **0.7%**  
Gross Capital Formation **-2.3%**  
Net Exports: • Exports: **4.0%**  
• Imports: **0.2%**



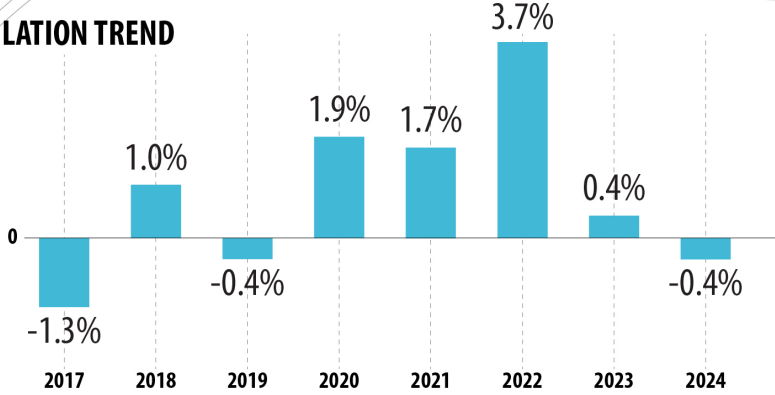


# CONSUMER PRICE INDEX 2024



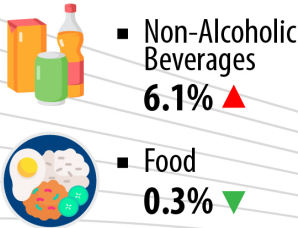
**INFLATION RATE: ▼ 0.4%**

**INFLATION TREND**

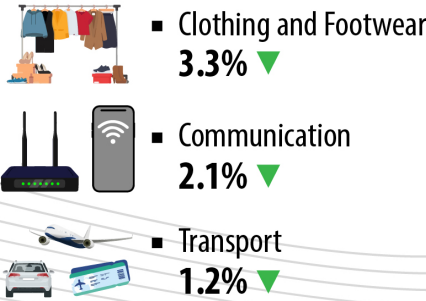


**MAIN CONTRIBUTORS (JANUARY-DECEMBER):**

**FOOD AND NON-ALCOHOLIC BEVERAGES ▲ 0.5%**



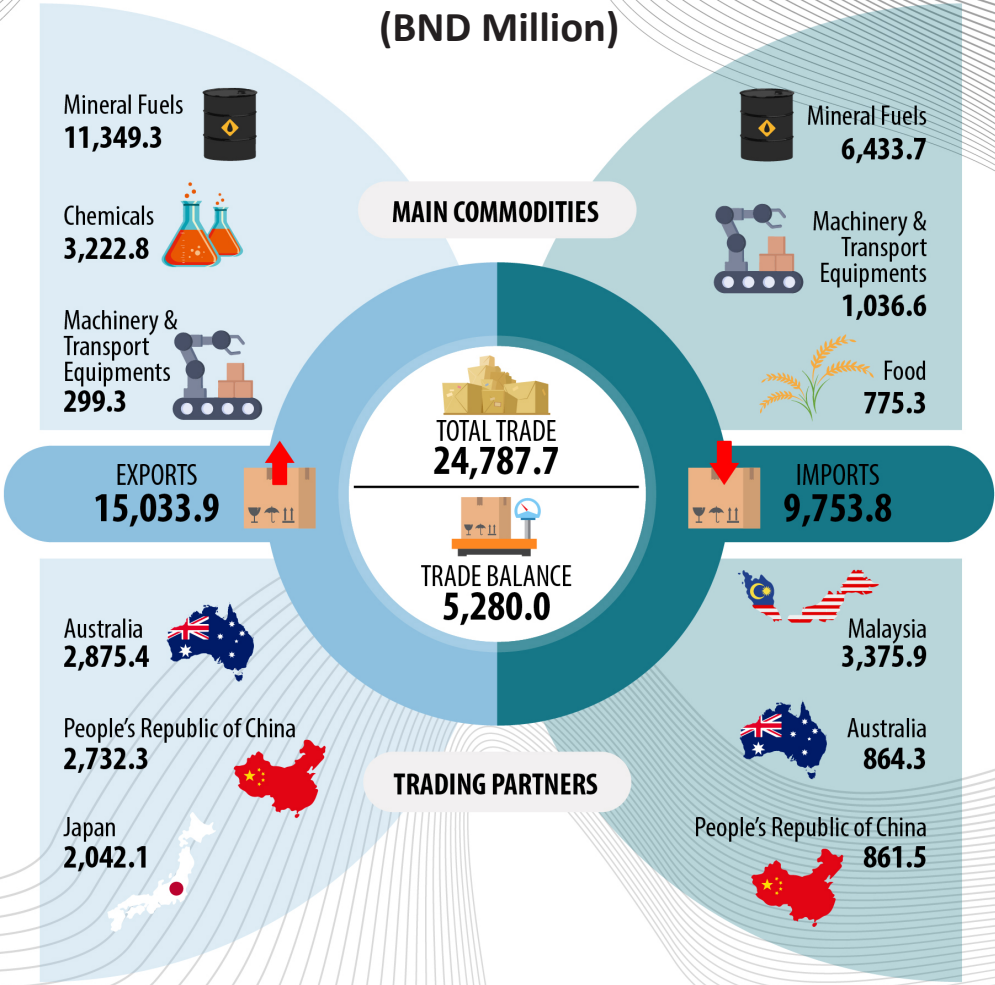
**NON-FOOD ▼ 0.6%**



# INTERNATIONAL MERCHANDISE TRADE STATISTICS 2024



**(BND Million)**



1. POPULATION

	2022	2023	2024
Total (Person)	445,400	450,500	455,500
Male	235,000	237,700	240,700
Female	210,400	212,800	214,800
Annual Growth Rate (%)	1.1	1.1	1.1
Area: 5,765 sq. km			
Population Density (Persons per sq. km)	77.3	78.1	79.0
Population by District (Person)			
Brunei Muara	322,400	326,000	329,900
Belait	66,100	66,900	67,500
Tutong	47,400	48,000	48,500
Temburong	9,500	9,600	9,600
Population by Residential Status (Person)			
Brunei Citizens	338,300	342,300	346,500
Permanent Residents	25,800	26,000	26,300
Temporary Residents	81,300	82,200	82,700
Population by Race (Person)			
Malay	327,300	332,100	335,500
Chinese	42,300	43,400	43,800
Others	75,800	75,000	76,200

1. POPULATION

	2022	2023	2024
Population Median Age (Years)	32.0	32.5	32.4
Population by Age Group (Person)			
0-4	29,700	30,000	30,200
5-9	30,600	29,800	29,800
10-14	31,200	31,400	30,700
15-19	32,400	31,500	30,100
20-24	37,100	36,900	39,700
25-29	40,900	40,900	42,500
30-34	40,800	41,500	42,900
35-39	38,900	40,200	41,500
40-44	36,800	37,300	37,700
45-49	31,600	32,300	32,700
50-54	27,600	27,900	27,300
55-59	21,200	22,000	20,900
60-64	17,900	17,500	16,400
65 and Over	28,700	31,300	33,100

2. LABOUR FORCE

	2022	2023	2024
Working Age Population (18-59 Years)	282,812	287,300	290,200
Labour Force (Person)	212,877	220,100	225,100
Male	127,893	132,000	134,600
Female	84,984	88,100	90,500
Employed (Person)	201,844	208,400	214,300
Male	121,799	125,000	128,900
Female	80,044	83,400	85,400
Unemployed (Person)	11,034	11,600	10,900
Male	6,093	7,000	5,700
Female	4,940	4,700	5,100
Labour Force Participation Rate (%)	75.3	76.6	77.6
Male	84.1	85.3	85.4
Female	65.0	66.4	68.3
Unemployment Rate (%)	5.2	5.3	4.8
Male	4.8	5.3	4.2
Female	5.8	5.3	5.6

2. LABOUR FORCE

	2022	2023	2024
Government Employees by Division (Person) <sup>(1)</sup>	45,440	45,761	45,208
Division I	1,036	975	983
Division II	11,229	11,396	11,487
Division III	10,362	10,474	10,371
Division IV	10,910	11,151	10,839
Division V	11,903	11,765	11,528
Number of Active Members at Employees Trust Fund (Person)	107,094	112,351	112,968
Government	42,856	45,756	45,241
Private	64,238	66,595	67,727



3. VITAL STATISTICS

	2022	2023	2024 <sup>p</sup>
Registered Live Births (Person)	6,254	6,290	5,359
Male	3,263	3,273	2,757
Female	2,991	3,017	2,602
Birth Ratio (Male per 100 Female)	109.1	108.5	106.0
Birth Rate per 1,000 Population	14.0	14.0	11.8
Total Fertility Rate (%)	1.8	1.8	1.5
Brunei Citizens	1.9	1.8	1.8
Permanent Residents	1.3	1.8	0.7
Temporary Residents	1.2	1.5	0.6
Life Expectancy at Birth (Years)	75.4	78	79.1
Male	73.4	77	77.3
Female	77.3	79	81.0
Registered Deaths (Person)	2,322	2,003	1,974
Male	1,319	1,067	1,129
Female	1,003	936	845
Death Rate per 1,000 Population	5.2	4.4	4.3
Infant Mortality Rate per 1,000 Live Births	10.4	7.3	11.4
Under 5 Mortality Rate per 1,000 Live Births	11.4	9.1	14.0

3. VITAL STATISTICS

	2022	2023	2024
Total Marriages (Number)	2,824	2,518	2,733
Marriages by Type			
Muslim	2,608	2,322	2,576
Civil	156	118	91
Customary and Others	60	78	66
Marriages by District			
Brunei Muara	1,995	1,743	2,060
Belait	395	315	281
Tutong	277	285	232
Temburong	88	52	48
Outside Brunei	69	123	112
Median Age at First Marriage (Years)			
Groom	27.1	27.6	27.6
Bride	26.0	26.5	26.6

### 3. VITAL STATISTICS

	2022	2023	2024
Total Divorces (Number)	588	735	672
Divorces by Type			
Muslim	577	717	649
Civil	11	18	23
Divorces by District			
Brunei Muara	401	499	489
Belait	103	108	87
Tutong	66	105	75
Temburong	16	21	19
Outside Brunei	2	2	2

### 4. GROSS DOMESTIC PRODUCT

	2022	2023 <sup>r</sup>	2024
By Sector at Current Prices (BND Million)			
Oil and Gas Sector	12,314.4	9,750.9	9,804.5
Non-Oil and Gas Sector	11,043.4	10,878.4	11,185.3
Government Sector	3,061.2	3,046.4	3,117.9
Private Sector	7,982.1	7,831.9	8,067.4
Gross Value Added	23,357.8	20,629.3	20,989.8
Taxes Less Subsidies on Products	-354.7	-355.4	-330.6
Gross Domestic Product	23,003.1	20,273.9	20,659.3
Per Capita at Current Prices (BND)	51,645.9	45,003.1	45,335.1
By Sector at Current Prices (% Share)			
Oil and Gas Sector	52.7	47.3	46.7
Non-Oil and Gas Sector	47.3	52.7	53.3
Government Sector	13.1	14.8	14.9
Private Sector	34.2	38.0	38.4
Gross Value Added	100.0	100.0	100.0

#### 4. GROSS DOMESTIC PRODUCT

	2022	2023 <sup>r</sup>	2024
By Sector at Constant Prices (BND Million)			
Oil and Gas Sector	9,136.3	8,905.5	9,393.9
Non-Oil and Gas Sector	9,915.3	10,360.9	10,681.8
Government Sector	3,031.7	2,966.4	3,004.9
Private Sector	6,883.6	7,394.5	7,676.8
Gross Value Added	19,051.6	19,266.4	20,075.7
Taxes Less Subsidies on Products	-353.3	-357.3	-372.3
Gross Domestic Product	18,698.2	18,909.1	19,703.3
Growth Rate (%) at Constant Prices			
Oil and Gas Sector	-7.3	-2.5	5.5
Non-Oil and Gas Sector	4.3	4.5	3.1
Government Sector	3.3	-2.2	1.3
Private Sector	4.7	7.4	3.8
Gross Domestic Product	-1.6	1.1	4.2

#### 4. GROSS DOMESTIC PRODUCT

	2022	2023 <sup>r</sup>	2024
By Kind of Economic Activity at Current Prices (BND Million)			
Agriculture, Forestry and Fishery	252.2	237.8	243.2
Vegetables, Fruits & Other Agriculture	27.4	31.1	32.8
Livestock and Poultry	86.4	84.0	88.4
Forestry	21.5	25.7	24.7
Fishery	116.9	96.9	97.3
Industry Sector	15,625.0	12,517.4	12,750.5
Oil and Gas Mining	9,899.6	8,072.3	8,243.2
Manufacture of LNG and Other Petroleum & Chemical Products	4,842.6	3,504.0	3,564.3
Manufacture of Wearing Apparel & Textiles	32.0	37.5	38.8
Manufacture of Food and Beverage Products	42.0	42.7	38.9
Other Manufacturing	172.6	198.7	198.1
Electricity and Water	189.8	186.7	202.8
Construction	446.5	475.5	464.3



## 4. GROSS DOMESTIC PRODUCT

	2022	2023 <sup>r</sup>	2024
<b>By Kind of Economic Activity at Current Prices (BND Million) (Cont'd)</b>			
<b>Services Sector</b>	<b>7,480.7</b>	<b>7,874.1</b>	<b>7,996.2</b>
Wholesale and Retail Trade	1,149.7	1,164.1	1,206.9
Land Transport	10.2	9.8	10.0
Water Transport	173.1	171.9	190.7
Air Transport	37.9	57.9	65.3
Other Transport Services	85.3	95.0	95.4
Communication	345.6	358.8	374.8
Finance	994.7	1,283.2	1,214.3
Real Estate and Ownership of Dwellings	635.5	620.0	619.9
Hotels	20.2	21.7	22.5
Restaurants	218.6	240.2	250.0
Health Services	327.6	347.4	357.3
Education Services	533.0	544.3	561.2
Business Services	466.7	492.0	508.2
Domestic Services	89.7	95.5	97.1
Other Private Services	105.3	111.1	109.8
Government Services/Public Administration	2,287.6	2,261.2	2,312.6
<b>Gross Value Added</b>	<b>23,357.8</b>	<b>20,629.3</b>	<b>20,989.8</b>
Taxes Less Subsidies on Products	-354.7	-355.4	-330.6
<b>Gross Domestic Product</b>	<b>23,003.1</b>	<b>20,273.9</b>	<b>20,659.3</b>

## 4. GROSS DOMESTIC PRODUCT

	2022	2023 <sup>r</sup>	2024
<b>By Kind of Economic Activity at Current Prices (% Share)</b>			
<b>Agriculture, Forestry and Fishery</b>	<b>1.1</b>	<b>1.2</b>	<b>1.2</b>
Vegetables, Fruits & Other Agriculture	0.1	0.2	0.2
Livestock and Poultry	0.4	0.4	0.4
Forestry	0.1	0.1	0.1
Fishery	0.5	0.5	0.5
<b>Industry Sector</b>	<b>66.9</b>	<b>60.7</b>	<b>60.7</b>
Oil and Gas Mining	42.4	39.1	39.3
Manufacture of LNG and Other Petroleum & Chemical Products	20.7	17.0	17.0
Manufacture of Wearing Apparel & Textiles	0.1	0.2	0.2
Manufacture of Food and Beverage Products	0.2	0.2	0.2
Other Manufacturing	0.7	1.0	0.9
Electricity and Water	0.8	0.9	1.0
Construction	1.9	2.3	2.2

## 4. GROSS DOMESTIC PRODUCT

	2022	2023 <sup>r</sup>	2024
By Kind of Economic Activity at Current Prices (% Share) (Cont'd)			
Services Sector	32.0	38.2	38.1
Wholesale and Retail Trade	4.9	5.6	5.7
Land Transport	0.0	0.0	0.0
Water Transport	0.7	0.8	0.9
Air Transport	0.2	0.3	0.3
Other Transport Services	0.4	0.5	0.5
Communication	1.5	1.7	1.8
Finance	4.3	6.2	5.8
Real Estate and Ownership of Dwellings	2.7	3.0	3.0
Hotels	0.1	0.1	0.1
Restaurants	0.9	1.2	1.2
Health Services	1.4	1.7	1.7
Education Services	2.3	2.6	2.7
Business Services	2.0	2.4	2.4
Domestic Services	0.4	0.5	0.5
Other Private Services	0.5	0.5	0.5
Government Services/Public Administration	9.8	11.0	11.0
Gross Value Added	100.0	100.0	100.0

## 4. GROSS DOMESTIC PRODUCT

	2022	2023 <sup>r</sup>	2024
By Kind of Economic Activity at Constant Prices (BND Million)			
Agriculture, Forestry and Fishery	189.2	167.4	174.2
Vegetables, Fruits & Other Agriculture	19.9	20.8	22.9
Livestock and Poultry	74.0	67.5	69.3
Forestry	8.3	9.8	9.5
Fishery	87.1	69.2	72.5
Industry Sector	11,305.6	11,095.5	11,728.7
Oil and Gas Mining	7,158.4	7,035.3	7,450.6
Manufacture of LNG and Other Petroleum & Chemical Products	3,254.3	3,111.1	3,333.4
Manufacture of Wearing Apparel & Textiles	32.4	37.9	40.7
Manufacture of Food and Beverage Products	38.5	37.4	33.5
Other Manufacturing	170.7	191.3	188.5
Electricity and Water	194.7	191.6	208.3
Construction	456.6	491.0	473.7

## 4. GROSS DOMESTIC PRODUCT

	2022	2023 <sup>r</sup>	2024
<b>By Kind of Economic Activity at Constant Prices (BND Million) (Cont'd)</b>			
<b>Services Sector</b>	<b>7,556.8</b>	<b>8,003.6</b>	<b>8,172.8</b>
Wholesale and Retail Trade	1,094.9	1,106.8	1,154.3
Land Transport	6.7	6.6	6.7
Water Transport	173.1	162.3	174.7
Air Transport	41.5	73.1	86.8
Other Transport Services	82.2	94.6	96.1
Communication	364.1	382.5	405.6
Finance	998.0	1,371.6	1,353.6
Real Estate and Ownership of Dwellings	823.4	844.7	865.0
Hotels	28.7	29.7	30.3
Restaurants	201.5	216.4	223.7
Health Services	322.4	336.4	345.5
Education Services	524.6	523.6	536.8
Business Services	445.8	461.8	477.7
Domestic Services	87.7	89.5	91.3
Other Private Services	98.2	103.9	103.2
Government Services/Public Administration	2,263.8	2,200.1	2,221.3
<b>Gross Value Added</b>	<b>19,051.6</b>	<b>19,266.4</b>	<b>20,075.7</b>
Taxes Less Subsidies on Products	-353.3	-357.3	-372.3
<b>Gross Domestic Product</b>	<b>18,698.2</b>	<b>18,909.1</b>	<b>19,703.3</b>

## 4. GROSS DOMESTIC PRODUCT

	2022	2023 <sup>r</sup>	2024
<b>Growth Rate (%) by Kind of Economic Activity at Constant Prices</b>			
<b>Agriculture, Forestry and Fishery</b>	<b>-3.3</b>	<b>-11.6</b>	<b>4.1</b>
Vegetables, Fruits & Other Agriculture	-0.3	4.5	9.9
Livestock and Poultry	-10.7	-8.8	2.7
Forestry	-20.8	18.9	-3.7
Fishery	5.6	-20.5	4.8
<b>Industry Sector</b>	<b>-4.9</b>	<b>-1.9</b>	<b>5.7</b>
Oil and Gas Mining	-6.0	-1.7	5.9
Manufacture of LNG and Other Petroleum & Chemical Products	-3.5	-4.4	7.1
Manufacture of Wearing Apparel & Textiles	0.1	16.8	7.5
Manufacture of Food and Beverage Products	1.4	-2.9	-10.2
Other Manufacturing	6.8	12.1	-1.5
Electricity and Water	0.2	-1.6	8.7
Construction	-4.2	7.5	-3.5



## 4. GROSS DOMESTIC PRODUCT

	2022	2023 <sup>r</sup>	2024
<b>Growth Rate (%) by Kind of Economic Activity at Constant Prices (Cont'd)</b>			
<b>Services Sector</b>	<b>3.8</b>	<b>5.9</b>	<b>2.1</b>
Wholesale and Retail Trade	3.5	1.1	4.3
Land Transport	8.0	-2.3	2.1
Water Transport	0.2	-6.3	7.7
Air Transport	147.1	75.8	18.9
Other Transport Services	8.9	15.0	1.6
Communication	3.5	5.1	6.0
Finance	0.2	37.4	-1.3
Real Estate and Ownership of Dwellings	2.4	2.6	2.4
Hotels	14.7	3.5	2.0
Restaurants	13.9	7.4	3.4
Health Services	4.4	4.3	2.7
Education Services	1.6	-0.2	2.5
Business Services	4.1	3.6	3.4
Domestic Services	2.0	2.0	2.0
Other Private Services	8.9	5.8	-0.7
Government Services/Public Administration	4.3	-2.8	1.0
<b>Gross Domestic Product</b>	<b>-1.6</b>	<b>1.1</b>	<b>4.2</b>

## 4. GROSS DOMESTIC PRODUCT

	2022	2023 <sup>r</sup>	2024
<b>By Type of Expenditure at Current Prices (BND Million)</b>			
Government Final Consumption Expenditure	4,629.2	4,636.3	4,758.7
Household Final Consumption Expenditure	5,349.4	5,594.5	5,888.2
Gross Capital Formation	5,946.5	6,006.8	5,859.5
Gross Fixed Capital Formation	5,906.7	5,965.7	5,817.6
Private	5,724.8	5,705.0	5,628.0
Government	181.9	260.7	189.6
Change in Inventories	39.8	41.1	41.8
Exports of Goods and Services	19,872.2	15,550.7	15,349.5
Goods	19,484.0	15,094.1	14,802.3
Services	388.2	456.7	547.2
Imports of Goods and Services	13,936.3	12,196.8	12,173.5
Goods	12,378.6	9,990.9	9,841.8
Services	1,557.7	2,205.9	2,331.6
Statistical Discrepancy	1,142.0	682.4	976.9

#### 4. GROSS DOMESTIC PRODUCT

	2022	2023 <sup>r</sup>	2024
<b>By Type of Expenditure at Current Prices (% Share)</b>	<b>100.0</b>	<b>100.0</b>	<b>100.0</b>
Government Final Consumption Expenditure	20.1	22.9	23.0
Household Final Consumption Expenditure	23.3	27.6	28.5
Gross Capital Formation	25.9	29.6	28.4
Gross Fixed Capital Formation	25.7	29.4	28.2
Private	24.9	28.1	27.2
Government	0.8	1.3	0.9
Change in Inventories	0.2	0.2	0.2
Exports of Goods and Services	86.4	76.7	74.3
Goods	84.7	74.5	71.6
Services	1.7	2.3	2.6
Imports of Goods and Services	60.6	60.2	58.9
Goods	53.8	49.3	47.6
Services	6.8	10.9	11.3
Statistical Discrepancy	5.0	3.4	4.7

#### 4. GROSS DOMESTIC PRODUCT

	2022	2023 <sup>r</sup>	2024
<b>By Type of Expenditure at Constant Prices (BND Million)</b>	<b>18,698.2</b>	<b>18,909.1</b>	<b>19,703.3</b>
Government Final Consumption Expenditure	4,589.6	4,478.4	4,508.4
Household Final Consumption Expenditure	5,266.3	5,848.5	6,196.4
Gross Capital Formation	5,794.0	5,806.4	5,670.2
Gross Fixed Capital Formation	5,755.9	5,767.6	5,630.6
Private	5,572.0	5,505.1	5,440.3
Government	183.8	262.5	190.2
Change in Inventories	38.2	38.8	39.6
Exports of Goods and Services	14,800.0	14,469.2	15,045.3
Goods	14,431.1	14,036.6	14,524.2
Services	368.8	432.6	521.1
Imports of Goods and Services	12,396.9	11,432.3	11,451.5
Goods	10,913.7	9,347.9	9,234.9
Services	1,483.2	2,084.4	2,216.6
Statistical Discrepancy	645.1	-261.0	-265.4

## 4. GROSS DOMESTIC PRODUCT

	2022	2023 <sup>r</sup>	2024
<b>Growth Rate (%) by Type of Expenditure at Constant Prices</b>	<b>-1.6</b>	<b>1.1</b>	<b>4.2</b>
Government Final Consumption Expenditure	6.9	-2.4	0.7
Household Final Consumption Expenditure	8.3	11.1	5.9
Gross Capital Formation	-1.8	0.2	-2.3
Gross Fixed Capital Formation	-1.8	0.2	-2.4
Private	-2.6	-1.2	-1.2
Government	28.0	42.8	-27.5
Change in Inventories	9.8	1.6	2.1
Exports of Goods and Services	7.2	-2.2	4.0
Goods	6.5	-2.7	3.5
Services	38.8	17.3	20.5
Imports of Goods and Services	11.5	-7.8	0.2
Goods	9.9	-14.3	-1.2
Services	24.7	40.5	6.3

## 4. GROSS DOMESTIC PRODUCT

	2022	2023 <sup>r</sup>	2024
<b>Gross Value Added by Income at Current Prices (BND Million)</b>	<b>23,357.8</b>	<b>20,629.3</b>	<b>20,989.8</b>
Compensation of Employees	5,887.5	6,112.4	6,299.0
Consumption of Fixed Capital	1,048.4	1,025.9	1,075.2
Other Taxes on Production	15.8	16.5	16.8
Net Operating Surplus/Mixed Income	16,406.1	13,474.4	13,598.8
<b>Gross Value Added Share (%) by Income at Current Prices</b>	<b>100.0</b>	<b>100.0</b>	<b>100.0</b>
Compensation of Employees	25.2	29.6	30.0
Consumption of Fixed Capital	4.5	5.0	5.1
Other Taxes on Production	0.1	0.1	0.1
Net Operating Surplus/Mixed Income	70.2	65.3	64.8



5. INTERNATIONAL MERCHANDISE TRADE STATISTICS

	2022	2023	2024
International Merchandise Trade Statistics (BND Million)			
Exports f.o.b.	19,623.6	14,765.4	15,033.9
Imports c.i.f.	12,664.3	10,007.2	9,753.8
Total Trade	32,287.9	24,772.6	24,787.7
Trade Balance	6,959.3	4,758.2	5,280.0
Annual Change (%)			
Exports f.o.b.	38.8	-24.8	1.8
Imports c.i.f.	30.3	-21.0	-2.5
Exports by Commodity Section (BND Million)			
Food	60.6	25.1	15.0
Beverages and Tobacco	0.3	0.2	0.0
Crude Materials, Inedible	38.7	18.8	18.4
Mineral Fuels	15,752.4	11,358.6	11,349.3
Animal and Vegetable Oils and Fats	0.6	0.5	0.6
Chemicals	3,430.3	3,030.2	3,222.8
Manufactured Goods	100.6	109.5	80.8
Machinery and Transport Equipment	181.8	156.1	299.3
Miscellaneous Manufactured Articles	44.2	56.5	33.3
Miscellaneous Transactions	14.1	9.8	14.4
Total	19,623.6	14,765.4	15,033.9

5. INTERNATIONAL MERCHANDISE TRADE STATISTICS

	2022	2023	2024
Exports by Trading Partners (BND Million)			
ASEAN	7,706.6	5,211.6	5,544.2
Cambodia	24.4	16.2	36.1
Indonesia	930.2	444.8	501.3
Lao PDR	0.0	0.0	0.0
Malaysia	1,986.4	982.4	1,072.4
Myanmar	75.1	5.8	9.6
Philippines	588.7	347.4	477.4
Singapore	2,659.1	2,466.2	1,956.3
Thailand	642.5	726.9	809.9
Viet Nam	800.2	221.9	681.2
European Union	15.1	7.4	10.8
France	0.4	0.5	0.5
Germany	5.1	2.7	6.0
Italy	4.0	1.7	3.2
Netherlands	3.7	-	-
Others	1.9	2.5	1.1

5. INTERNATIONAL MERCHANDISE TRADE STATISTICS

	2022	2023	2024
Exports by Trading Partners (BND Million) (Cont'd)			
Other Trading Partners	11,901.8	9,546.0	9,478.9
Australia	4,043.4	3,173.6	2,875.4
People's Republic of China	3,053.1	2,497.0	2,732.3
Hong Kong SAR	18.5	53.3	1.7
Japan	3,409.3	2,028.3	2,042.1
Republic of Korea	345.8	402.7	487.7
Taiwan, China	29.0	253.7	322.1
United Kingdom	33.0	30.1	3.8
United States of America	177.3	133.1	238.7
Others	792.4	974.2	775.2
Total	19,623.6	14,765.4	15,033.9

5. INTERNATIONAL MERCHANDISE TRADE STATISTICS

	2022	2023	2024
Exports of Crude Oil by Trading Partners (BND Million)			
Australia	1,467.2	748.5	755.1
India	371.2	211.2	297.5
Indonesia	97.3	270.9	357.9
Japan	119.5	137.0	152.8
Republic of Korea	95.0	-	-
Malaysia	90.1	181.4	83.3
Singapore	391.2	488.9	383.7
Thailand	361.3	398.7	610.4
Viet Nam	-	-	131.6
Others	-	0.0	33.9
Total	2,992.7	2,436.6	2,806.2
Exports of Liquefied Natural Gas by Trading Partners (BND Million)			
Japan	3,231.0	1,863.9	1,830.8
Republic of Korea	202.8	382.8	403.9
Malaysia	864.5	180.4	-
Others	513.7	977.7	967.6
Total	4,811.9	3,404.8	3,202.3

5. INTERNATIONAL MERCHANDISE TRADE STATISTICS

	2022	2023	2024
Imports by Commodity Section (BND Million)			
Food	792.9	735.1	775.3
Beverages and Tobacco	64.7	61.3	48.9
Crude Materials, Inedible	106.2	32.1	33.6
Mineral Fuels	8,583.4	6,320.1	6,433.7
Animal and Vegetable Oils and Fats	34.8	26.7	25.5
Chemicals	689.8	703.4	408.1
Manufactured Goods	575.3	559.9	595.3
Machinery and Transport Equipment	1,381.1	1,196.5	1,036.6
Miscellaneous Manufactured Articles	421.4	357.8	385.5
Miscellaneous Transactions	14.6	14.4	11.2
Total	12,664.3	10,007.2	9,753.8

Imports by Trading Partners (BND Million)			
ASEAN	4,567.4	3,429.0	4,641.0
Cambodia	18.6	11.4	13.4
Indonesia	374.1	277.0	355.9
Lao PDR	0.0	0.0	0.3
Malaysia	3,041.8	2,335.2	3,375.9
Myanmar	1.4	0.8	0.5
Philippines	201.4	79.0	133.6
Singapore	678.1	471.1	352.9
Thailand	112.7	129.8	144.5
Viet Nam	139.3	124.6	263.9

5. INTERNATIONAL MERCHANDISE TRADE STATISTICS

	2022	2023	2024
Imports by Trading Partners (BND Million) (Cont'd)			
European Union	320.7	390.5	233.1
France	18.1	19.2	29.6
Germany	86.2	90.7	86.9
Italy	43.8	37.5	32.9
Netherlands	26.5	31.1	21.0
Others	146.1	211.9	62.8
Other Trading Partners	7,776.3	6,187.8	4,879.7
Australia	598.9	719.3	864.3
People's Republic of China	1,117.7	1,039.7	861.5
Hong Kong SAR	28.9	22.1	19.6
Japan	148.9	119.8	108.6
Republic of Korea	112.7	96.3	55.6
Taiwan, China	51.2	23.6	25.7
United Arab Emirates	1,544.4	1,171.4	773.0
United Kingdom	151.9	140.6	112.1
United States of America	392.1	374.2	298.4
Others	3,629.5	2,480.8	1,761.1
Total	12,664.3	10,007.2	9,753.8

6. FOREIGN DIRECT INVESTMENT

	2022	2023	2024
Foreign Direct Investment Flows (BND Million)			
By Component			
Equity Investment	-71.3	336.9	-213.7
Debt Instruments	-331.9	-405.5	248.2
Total	-403.2	-68.6	34.5
By Economic Activity			
Mining and Quarrying	-293.8	161.2	35.9
Manufacturing	-231.2	-265.9	-20.8
Construction	14.7	-27.4	-22.9
Wholesale and Retail Trade	27.8	21.6	-47.8
Financial and Insurance Activities	80.5	55.9	76.3
Professional, Scientific and Technical Activities	-25.9	-7.1	1.8
Other Activities	24.7	-6.9	12.0
Total	-403.2	-68.6	34.5

6. FOREIGN DIRECT INVESTMENT

	2022	2023	2024
Foreign Direct Investment Flows (BND Million)			
By Country			
ASEAN	115.0	-47.4	-9.7
Malaysia	46.1	-43.0	17.9
Singapore	68.8	-4.4	-27.6
Others	0.1	-	-
European Union	-147.8	0.6	333.4
Germany	-	1.0	0.2
Netherlands	-140.8	-5.2	328.9
Others	-7.0	4.8	4.3
Other Countries	-370.4	-21.8	-289.2
Hong Kong SAR	-212.7	-181.1	56.9
Japan	-8.7	-59.5	-44.7
United Kingdom	-248.7	234.5	-292.2
United States of America	0.9	-24.5	3.3
Others	98.8	8.8	-12.5
Total	-403.2	-68.6	34.5



6. FOREIGN DIRECT INVESTMENT

	2022	2023	2024
Foreign Direct Investment Stock (BND Million)			
By Component			
Equity Investment	7,697.5	7,728.6	7,090.6
Debts Instrument	1,494.4	1,232.2	1,477.0
Total	9,191.9	8,960.8	8,567.6
By Economic Activity			
Mining and Quarrying	3,568.2	3,422.5	2,987.6
Manufacturing	3,749.7	3,444.3	3,480.6
Construction	65.2	58.8	22.4
Wholesale and Retail Trade	187.3	205.5	168.1
Financial and Insurance Activities	1,022.5	1,174.1	1,266.4
Professional, Scientific and Technical Activities	306.6	228.6	228.4
Other Activities	292.4	427.0	414.1
Total	9,191.9	8,960.8	8,567.6

6. FOREIGN DIRECT INVESTMENT

	2022	2023	2024
Foreign Direct Investment Stock (BND Million)			
By Country			
ASEAN	668.9	633.1	581.7
Malaysia	232.6	269.5	293.0
Singapore	430.9	363.6	288.7
Others	5.4	-	-
European Union	912.6	627.6	1,006.4
Germany	10.0	11.0	11.4
Netherlands	872.8	600.4	974.1
Others	29.8	16.2	20.9
Other Countries	7,610.4	7,700.1	6,979.5
Hong Kong SAR	3,222.7	2,954.3	3,058.4
Japan	412.8	362.0	320.3
United Kingdom	2,840.2	3,007.7	2,696.2
United States of America	24.6	2.5	5.4
Others	1,110.1	1,373.6	899.2
Total	9,191.9	8,960.8	8,567.6

7. CONSUMER PRICE INDEX

Consumer Price Index (Jan 2015=100)

Divisions	Weights
Food and Non-Alcoholic Beverages	1,883
Clothing and Footwear	403
Housing, Water, Electricity, Gas and Other Fuels	1,170
Furnishings, Household Equipment and Routine Household Maintenance	702
Health	91
Transport	1,961
Communication	594
Recreation and Culture	664
Education	696
Restaurants and Hotels	1,069
Miscellaneous Goods and Services	767
Total	10,000

7. CONSUMER PRICE INDEX

	2022	2023	2024
Inflation Rate (%)	3.7	0.4	-0.4
Overall Index	106.4	106.8	106.4
Food and Non-Alcoholic Beverages	112.3	115.3	115.9
Clothing and Footwear	100.7	100.3	97.0
Housing, Water, Electricity, Gas and Other Fuels	94.8	95.1	94.2
Furnishings, Household Equipment and Routine Household Maintenance	101.4	101.6	101.0
Health	102.7	103.5	103.7
Transport	106.1	103.3	102.1
Communication	99.0	96.0	94.0
Recreation and Culture	105.2	106.8	106.9
Education	105.3	106.1	106.3
Restaurants and Hotels	106.8	109.6	110.3
Miscellaneous Goods and Services	126.0	126.4	126.6

## 8. INTERNATIONAL MERCHANDISE TRADE INDEX

### International Merchandise Trade Index (Jan 2015=100)

Commodity	Weights	
	Exports	Imports
Food	6.3	1,598.0
Beverages	3.1	192.1
Crude Materials, Inedible	10.2	114.0
Mineral Fuels	9,566.6	755.1
Animal and Vegetable Oils and Fats	-	45.5
Chemicals	187.5	809.7
Manufactured Goods	59.3	2,349.6
Machinery and Transport Equipment	114.0	3,141.0
Miscellaneous Manufactured Articles	52.9	995.0
Total	10,000	10,000

	2022	2023	2024
Overall Index			
Terms of Trade	117.2	99.8	104.4
Exports			
Unit Value Index	162.1	126.2	127.1
Volume Index	67.0	65.1	73.2
Imports			
Unit Value Index	138.3	126.4	121.8
Volume Index	114.1	114.2	115.2

## 8. INTERNATIONAL MERCHANDISE TRADE INDEX

	2022	2023	2024
Exports Unit Value Index by Commodity Section			
Overall Index	162.1	126.2	127.1
Food	153.2	141.6	140.0
Beverages	88.0	90.8	90.9
Crude Materials, Inedible	120.5	115.9	107.4
Mineral Fuels	163.5	126.7	127.8
Chemicals	151.3	124.6	117.2
Manufactured Goods	167.3	144.8	146.4
Machinery and Transport Equipment	98.2	90.1	93.6
Miscellaneous Manufactured Articles	92.4	95.4	90.0

Exports Volume Index by Commodity Section			
Overall Index	67.0	65.1	73.2
Food	100.9	79.2	78.7
Beverages	121.5	124.3	129.9
Crude Materials, Inedible	85.4	82.1	83.8
Mineral Fuels	65.6	63.7	72.1
Chemicals	85.4	87.5	98.2
Manufactured Goods	123.5	108.3	111.9
Machinery and Transport Equipment	106.8	107.5	96.8
Miscellaneous Manufactured Articles	103.8	93.2	92.8

## 8. INTERNATIONAL MERCHANDISE TRADE INDEX

	2022	2023	2024
<b>Imports Unit Value Index by Commodity Section</b>			
Overall Index	138.3	126.4	121.8
Food	106.3	101.1	103.3
Beverages	109.8	110.9	112.0
Crude Materials, Inedible	141.2	132.5	126.4
Mineral Fuels	175.8	137.5	130.4
Animal and Vegetable Oils and Fats	165.4	156.4	150.9
Chemicals	127.2	119.8	112.1
Manufactured Goods	164.5	150.8	138.2
Machinery and Transport Equipment	141.1	126.9	124.1
Miscellaneous Manufactured Articles	103.3	106.5	107.4

### Imports Volume Index by Commodity Section

Overall Index	114.1	114.2	115.2
Food	143.5	145.1	142.5
Beverages	88.9	89.3	89.6
Crude Materials, Inedible	78.2	77.2	75.8
Mineral Fuels	90.9	91.1	91.6
Animal and Vegetable Oils and Fats	109.6	111.9	106.2
Chemicals	148.2	139.6	137.3
Manufactured Goods	75.0	78.5	84.5
Machinery and Transport Equipment	111.9	111.7	113.0
Miscellaneous Manufactured Articles	165.2	162.6	160.1

## 8. INTERNATIONAL MERCHANDISE TRADE INDEX

	2022	2023	2024
<b>Terms of Trade Index by Commodity Section</b>			
Overall Index	117.2	99.8	104.4
Food	144.1	140.1	135.5
Beverages	80.1	81.9	81.2
Crude Materials, Inedible	85.3	87.5	85.0
Mineral Fuels	93.0	92.1	98.0
Chemicals	119.0	104.0	104.5
Manufactured Goods	101.7	96.0	105.9
Machinery and Transport Equipment	69.6	71.0	75.4
Miscellaneous Manufactured Articles	89.4	89.6	83.8



## 9. OIL AND GAS

	2022	2023	2024
<b>Average Production</b>			
Oil (Kbbl/d)	92	89	99
Natural Gas (Kboe/d)	196	196	201
<b>Average Exports</b>			
Oil (Kbbl/d)	55	57	68
LNG (MMBtu/d)	664,602	649,751	673,935
<b>Average Price of Exports</b>			
Oil (USD/Barrel)	107.69	87.14	83.85
LNG (USD/MMBtu)	14.40	10.69	9.74
<b>Production of Petroleum Products (Thousand m³)</b>			
Motor Gasoline	2,534	2,064	1,476
Diesel	3,573	3,518	3,768
Dual Purpose Kerosene	58	118	285
Liquefied Petroleum Gas (LPG)	1,058	858	796
Other Petroleum Products	1,141	899	1,498
Petrochemical Products	2,332	2,079	2,300

## 9. OIL AND GAS

	2022	2023	2024
<b>Domestic Consumption (Thousand m³)</b>			
Motor Gasoline (Mogas)	344.63	375.53	373.80
Premium RON 97	300.45	327.54	328.10
Super RON 92	0.23	-	-
Regular RON 85	38.75	42.91	45.68
Diesel	286.82	306.09	304.55
V-Power Mogas	5.20	5.07	4.56
V-Power Diesel	1.11	1.19	1.17
Kerosene	3.94	3.51	3.84
Jet A-1	48.77	74.84	77.53
Liquefied Petroleum Gas (LPG)	32.33	34.62	35.37
Gas	1,734,738.92	1,755,856.57	1,802,510.20

## 10. BANKING AND FINANCE

	2022	2023	2024
<b>End of Period</b>			
<b>Money Aggregates (BND Million)</b>			
Narrow Money	5,934	5,972	5,917
Quasi Money	10,185	10,580	11,236
<b>Broad Money</b>	<b>16,119</b>	<b>16,552</b>	<b>17,154</b>
<b>Currency in Circulation (BND Million)</b>			
Gross Circulation	1,422	1,417	1,401
Active Circulation	1,236	1,237	1,198
<b>End of Period</b>			
<b>Banking System : Assets (BND Million)</b>			
Notes and Coins Held	173	161	173
Balances with BDCB, including Minimum Cash Balance	2,590	1,532	1,104
<b>Amount Due from Banks and Financial Institutions</b>			
In Brunei Darussalam	540	873	1,017
Outside Brunei Darussalam	6,240	5,661	5,918
Loan and Advances/Financing (Net)	6,265	7,002	7,561
Investments	4,059	3,919	4,227
Other Assets	806	669	873
<b>Total Assets</b>	<b>20,672</b>	<b>19,817</b>	<b>20,874</b>

## 10. BANKING AND FINANCE

	2022	2023	2024
<b>End of Period</b>			
<b>Banking System : Liabilities (BND Million)</b>			
<b>Deposits (Non-bank Customers)</b>			
Demand	4,887	4,975	4,868
Savings	4,637	4,430	4,482
Time	7,704	6,610	6,995
Others	83	93	94
<b>Amount Due to Banks</b>			
In Brunei Darussalam	69	59	94
Outside Brunei Darussalam	217	453	746
Others (Capital Funds and Other Liabilities)	3,076	3,197	3,596
<b>Total Liabilities</b>	<b>20,672</b>	<b>19,817</b>	<b>20,874</b>

10. BANKING AND FINANCE

	2022	2023	2024
<b>Brunei Dollar to 1 unit</b>			
<b>US Dollar (USD)</b>			
Period Average	1.38	1.35	1.34
End of Period	1.34	1.32	1.37
<b>Pound Sterling (GBP)</b>			
Period Average	1.70	1.69	1.71
End of Period	1.62	1.68	1.71
<b>Australian Dollar (AUD)</b>			
Period Average	0.96	0.89	0.88
End of Period	0.91	0.90	0.85
<b>Euro (EUR)</b>			
Period Average	1.45	1.46	1.45
End of Period	1.44	1.46	1.41
<b>Malaysian Ringgit (MYR)</b>			
Period Average	0.31	0.29	0.29
End of Period	0.30	0.29	0.30

10. BANKING AND FINANCE

	2022	2023	2024
<b>Brunei Dollar to 100 units</b>			
<b>End of Period</b>			
Malaysian Ringgit (MYR)	30.44	28.72	30.47
Hong Kong Dollar (HKD)	17.19	16.90	17.58
Indonesian Rupiah (IDR)	0.01	0.01	0.01
Japanese Yen (JPY)	1.02	0.94	0.87
Philippine Peso (PHP)	2.41	2.38	2.36
Saudi Riyal (SAR)	35.69	35.19	36.34
Swiss Franc (CHF)	144.96	156.76	150.38
Thai Baht (THB)	3.88	3.84	3.98

## 11. GOVERNMENT FINANCE

CALENDAR YEAR (BND Million)	2022	2023	2024 <sup>P</sup>
<b>Total Government Revenue</b>	<b>6,618.4</b>	<b>3,763.8</b>	<b>3,456.9</b>
<b>Oil and Gas Revenue</b>	<b>5,798.2</b>	<b>2,831.5</b>	<b>2,505.2</b>
<b>Revenue from Government Operations</b>	<b>711.8</b>	<b>809.1</b>	<b>806.7</b>
Taxes	350.7	406.0	416.3
Fees, Charges and Rent	330.8	364.8	355.1
Others	30.3	38.3	35.4
<b>Return from Investments and Savings</b>	<b>67.6</b>	<b>102.3</b>	<b>67.5</b>
<b>Excess Revenue - Statutory bodies</b>	<b>40.9</b>	<b>20.9</b>	<b>77.6</b>
<b>Total Government Expenditure</b>	<b>6,128.0</b>	<b>6,100.2</b>	<b>6,043.6</b>
<b>Charged Expenditure</b>	<b>1,546.9</b>	<b>1,270.4</b>	<b>1,281.0</b>
<b>Ordinary Expenditure</b>	<b>4,362.4</b>	<b>4,515.9</b>	<b>4,514.2</b>
Personnel Emoluments	2,077.6	2,134.5	2,164.7
Other Charges Annually Recurrent	2,284.8	2,381.4	2,349.5
<b>Development Expenditure</b>	<b>218.8</b>	<b>314.0</b>	<b>248.4</b>
<b>Fiscal Balance</b>	<b>490.4</b>	<b>-2,336.4</b>	<b>-2,586.6</b>

## 11. GOVERNMENT FINANCE

FISCAL YEAR (BND Million)	2022/23	2023/24	2024/25 <sup>P</sup>
<b>Total Government Revenue</b>	<b>6,345.4</b>	<b>3,694.4</b>	<b>3,378.5</b>
<b>Oil and Gas Revenue</b>	<b>5,462.6</b>	<b>2,731.3</b>	<b>2,497.7</b>
<b>Revenue from Government Operations</b>	<b>764.0</b>	<b>801.8</b>	<b>724.8</b>
Taxes	374.2	424.9	357.7
Fees, Charges and Rent	345.6	353.3	333.0
Others	44.2	23.6	34.1
<b>Return from Investments and Savings</b>	<b>77.9</b>	<b>90.4</b>	<b>111.0</b>
<b>Excess Revenue - Statutory bodies</b>	<b>40.9</b>	<b>70.9</b>	<b>45.1</b>
<b>Total Government Expenditure</b>	<b>6,084.9</b>	<b>6,111.3</b>	<b>6,006.6</b>
<b>Charged Expenditure</b>	<b>1,489.8</b>	<b>1,298.3</b>	<b>1,261.4</b>
<b>Ordinary Expenditure</b>	<b>4,382.1</b>	<b>4,446.2</b>	<b>4,527.2</b>
Personnel Emoluments	2,107.0	2,149.0	2,174.9
Other Charges Annually Recurrent	2,275.0	2,297.2	2,352.3
<b>Development Expenditure</b>	<b>213.0</b>	<b>366.8</b>	<b>218.0</b>
<b>Fiscal Balance</b>	<b>260.5</b>	<b>-2,416.9</b>	<b>-2,628.0</b>



12. EDUCATION

	2022	2023	2024
<b>Educational Institutions (Number) <sup>(2)</sup></b>	<b>255</b>	<b>256</b>	<b>259</b>
<b>Government Schools</b>	<b>175</b>	<b>175</b>	<b>175</b>
Pre-Primary (Pre-School)/Primary	121	121	121
Secondary/Sixth Form (Pre-University)	40	40	40
Technical/Vocational	9	9	9
Tertiary	5	5	5
<b>Private Schools</b>	<b>80</b>	<b>81</b>	<b>84</b>
Pre-Primary (Pre-School)/Primary/ Secondary/Sixth Form (Pre-University)	72	72	75
Technical/Vocational	4	4	4
Tertiary	4	5	5

12. EDUCATION

	2022	2023	2024
<b>Teachers (Person)</b>	<b>10,716</b>	<b>10,609</b>	<b>10,793</b>
<b>Government Schools</b>	<b>8,371</b>	<b>8,268</b>	<b>8,212</b>
Pre-Primary (Pre-School)	269	258	265
Primary	2,733	2,694	2,638
Secondary/Sixth Form (Pre-University)	4,082	4,049	3,986
Technical/Vocational	487	460	454
Tertiary	800	807	869
<b>Private Schools</b>	<b>2,345</b>	<b>2,341</b>	<b>2,581</b>
Pre-Primary (Pre-School)	556	515	653
Primary	1,135	1,155	1,208
Secondary/Sixth Form (Pre-University)	511	525	525
Technical/Vocational	53	57	87
Tertiary	90	89	108

12. EDUCATION

	2022	2023	2024
<b>Students (Person)</b>	<b>104,493</b>	<b>103,917</b>	<b>103,988</b>
<b>Government Schools</b>	<b>71,351</b>	<b>69,417</b>	<b>69,746</b>
Pre-Primary (Pre-School)	2,911	3,073	2,938
Primary	22,461	21,907	21,682
Secondary	26,433	25,106	25,652
Sixth Form (Pre-University)	4,307	4,113	3,664
Technical/Vocational	3,256	4,341	4,366
Tertiary	11,983	10,877	11,444
<b>Private Schools</b>	<b>33,142</b>	<b>34,500</b>	<b>34,242</b>
Pre-Primary (Pre-School)	7,371	8,811	9,537
Primary	16,616	16,697	16,069
Secondary	5,600	5,729	5,780
Sixth Form (Pre-University)	486	494	517
Technical/Vocational	1,404	1,280	1,053
Tertiary	1,665	1,489	1,286

12. EDUCATION

	2022	2023	2024
<b>Student-Teacher Ratio</b>			
Pre-Primary (Pre-School) and Primary	11	11	11
Secondary and Sixth Form (Pre-University)	8	8	8
Higher Education	13	13	12
<b>Male Student per 100 Female Student</b>			
Pre-Primary (Pre-School)	107	107	106
Primary	106	107	108
Secondary	108	107	107
Sixth Form (Pre-University)	71	74	76
Technical/Vocational	133	135	133
Tertiary	69	71	71
<b>Literacy Rate (%) Aged 10 and Above</b>			
<b>Total</b>	<b>96.6</b>	<b>96.7</b>	<b>96.7</b>
Male	97.2	97.4	97.6
Female	96.0	96.1	96.1

13. HEALTH

	2022	2023	2024
<b>Medical Institutions (Number)</b>			
Hospital	7	7	7
Medical Centre	9	9	9
Health Centre	15	15	15
Health Clinic	17	17	17
Beds in Hospital	1,908	1,643	1,627
<b>Medical Personnels (Persons)</b>			
Medical Doctor	1,080	961	1,008
Dentists	118	119	133
Nurses	2,463	2,588	2,581
Pharmacists	94	101	106
Midwives	424	424	424
Population per Medical Doctor	412	469	452

13. HEALTH

	2022	2023	2024 <sup>p</sup>
<b>Leading Causes of Deaths</b>			
Cancer	419	372	405
Heart Diseases (Including Acute Rheumatic Fever)	384	304	301
Cerebrovascular Diseases	184	163	169
Diabetes Mellitus	230	154	165
Septicaemia	80	86	76
Hypertensive Diseases	87	65	78
Influenza and Pneumonia	45	56	55
Bronchitis, Chronic and Unspecified Emphysema and Asthma	48	32	28
Other Diseases	845	771	697

14. TRANSPORT

	2022	2023	2024
Length of Road (Kilometre)	3,805.7	3,819.6	3,826.2
Land Transport			
Newly Registered Vehicles (Number)	14,387	16,611	16,504
Private Cars	13,644	15,359	15,316
Goods Vehicles	298	536	484
Buses	22	37	49
Motorcycles/Scooters	410	676	645
Others	13	3	10
Air Transport			
Aircraft Movements (Number)			
Scheduled	5,148	9,670	11,330
Non-Scheduled	1,097	748	814
Passengers (Thousand Persons)			
Inward	255.8	548.2	635.8
Outward	261.7	528.5	629.9
Transit	45.0	136.8	198.5
Freight (Thousand Kilogramme)			
Inward	4,158.6	5,543.9	6,557.6
Outward	434.4	484.0	496.1
Transit	3,266.6	5,920.7	6,980.5

14. TRANSPORT

	2022	2023	2024
Sea Transport <sup>(3)</sup>			
Vessels/Boats Licensed (Number)			
Passenger Boats	10	10	5
Vessels	2	7	2
Fishing Vessels	2	9	6
Pleasure Crafts	473	159	167
Seaborne Cargo (Thousand Freight Tonne)			
Discharged	907.9	1,036.3	999.5
Loaded	294.4	698.6	682.1



15. COMMUNICATION

	2022	2023	2024 <sup>p</sup>
<b>Fixed Lines</b>			
Number of Fixed Lines (Thousand)	122.2	121.8	128.3
Fixed Line per 100 Population	27.4	27.0	28.2
<b>Mobile Subscribers (Cumulative)</b>			
Postpaid	127,301	133,174	135,885
Prepaid	401,422	449,745	410,730
<b>Mobile Penetration Rate (%)</b>			
	118.7	129.4	120.0
<b>Internet Subscribers (Number) <sup>(4)</sup></b>			
Fixed Broadband	90,186	92,764	97,991
Mobile Broadband	533,524	545,307	550,961
<b>Internet Penetration Rate (%)</b>			
Fixed Broadband	20.2	20.6	21.5
Mobile Broadband	119.8	121.0	121.0
<b>Postal (Number) <sup>(5)</sup></b>			
Post Office	21	21	21
<b>Postal Services (Pieces)</b>			
Letter Mails	1,641,971	1,533,255	1,296,351
Printed Matters	45,178	39,955	39,690
Postcards	946	2,834	3,225
Registered Articles	125,844	125,235	132,842
Parcels, Small Packets and Others	203,324	145,451	150,205

16. UTILITIES

	2022	2023	2024
<b>Electricity</b>			
Generation Capacity (MW)	899.2	906.2	1,048.4
Production (GWh)	4,389.5	4,461.3	4,617.5
Consumption (GWh)	3,697.8	3,649.7	3,242.0
Coverage in Electricity Supply (%)	99.9	99.9	99.9
<b>Water</b>			
Production (Thousand m <sup>3</sup> )	154,953.6	153,890.8	75,016.0
Consumption (Thousand m <sup>3</sup> )	82,460.5	...	...
Coverage in Water Supply (%)	99.9	99.9	99.9

17. PRIMARY SECTOR

	2022	2023	2024
Main Crop Production (Metric Tonne)			
Rice	2,315.7	2,236.1	2,347.8
Paddy	3,562.6	3,726.8	3,612.1
Vegetable	7,412.1	8,674.9	10,040.4
Fruit	5,611.4	6,506.4	8,634.0
Local and Import Livestock Production			
Buffaloes			
Local (Number)	1,209	1,016	872
Imports			
Live (Number)	3,453	2,092	2,420
Chilled & Frozen (Metric Tonne)	1,288.1	2,575.9	1,371.4
Slaughtered (Number)	2,938	2,611	1,850
Dressed Weight (Metric Tonne)	585.7	516.1	379.5
Cattles			
Local (Number)	367	314	286
Imports			
Live (Number)	6,863	3,296	3,757
Chilled & Frozen (Metric Tonne)	1,775.6	1,285.1	1,412.4
Slaughtered (Number)	6,405	3,367	3,779
Dressed Weight (Metric Tonne)	1,449.4	757.6	853.7

17. PRIMARY SECTOR

	2022	2023	2024
Goats			
Local (Number)	4,160	3,559	3,072
Import (Number)	-	130	-
Slaughtered (Number)	1,105	1,575	1,458
Dressed Weight (Metric Tonne)	19.3	27.6	25.5
Non-Ruminant Local Livestock (Number)	528,837	336,997	284,344
Local and Imported Poultry Production			
Broiler Chickens			
Local (Thousand)	19,316.9	19,998.9	20,450.2
Imports			
Live (Thousand)	2,098.9	1,132.1	930.4
Chilled & Frozen (Metric Tonne)	-	868.5	73.1
Slaughtered (Thousand)	20,472.5	19,160.7	19,329.9
Dressed Weight (Metric Tonne)	30,708.7	28,741.1	28,994.8
Layer Chickens			
Local Chicken Eggs (Million)	173.9	171.7	190.8
Import Chicken Eggs (Million)	-	-	-
Fertilized Eggs			
Local (Million)	20.0	21.4	19.4
Import (Million)	5.8	5.3	6.7

17. PRIMARY SECTOR

	2022	2023	2024
Forestry Production			
Round Timber (Thousand m³)	47.8	52.8	49.9
Sawn Timber (Thousand m³)	24.7	27.9	26.0
Mangrove Poles (Thousand pcs)	23.9	32.3	32.5
Charcoal Briquette (Thousand kg)	306.6	311.0	283.1
Poles (Thousand pcs)	0.6	0.2	0.1
Wood Components (Thousand m³)	9.4	10.7	12.4
Fishery Production			
Local Production (Metric Tonne)	26,019.8	22,484.7	23,318.8
Capture Fisheries Industry	16,178.2	17,683.6	19,397.6
Commercial Fisheries	2,463.4	3,239.3	3,723.1
Small Scale Fisheries	13,714.8	14,444.3	15,674.5
Aquaculture Industry	5,018.4	1,690.1	1,303.7
Fish in Cages	248.4	194.9	209.8
Marine Prawn	4,753.5	1,478.6	1,072.4
Fresh Water Fish	15.4	15.6	21.2
Crab	1.2	0.9	0.4
Fish Processing Industry	4,823.1	3,111.0	2,617.6
Frozen Seafood Products	4,140.3	2,657.1	2,390.7
Seafood Crackers Products	37.1	40.9	44.6
Value Added Products	104.6	109.8	113.5
Other Products	521.5	275.4	2.6
Small Scale Products	19.6	27.9	66.2

18. MISCELLANEOUS

	2022	2023	2024
Road Casualties (Number)			
Accidents	2,131	1,982	1,814
Injuries	359	364	359
Deaths	20	13	13
Crime (Number) <sup>(6)</sup>			
Total Cases	3,872	4,754	5,387
Against			
Person	455	511	485
Property	1,105	1,344	1,443
Penal Code	1,747	2,161	2,684
Misuse of Drug	338	424	447
Other Enactment	227	314	328
Climate			
Mean Temperature (°C)			
Mean Maximum	32.0	32.7	32.9
Mean Minimum	24.1	24.5	24.8
Mean Relative Humidity (%)	91.0	90.0	87.0
Total Rainfall (Millimetre)	3,733.2	3,120.5	3,356.5
Bright Sunshine (Daily Mean/hours)	6.4	7.1	7.2

18. MISCELLANEOUS

	2022	2023	2024 (as of Sep)
<b>Pensions (Person)</b>			
<b>Old Age Pension Recipients by District</b>	<b>40,428</b>	<b>42,072</b>	<b>43,714</b>
Brunei Muara	25,800	26,880	27,970
Belait	7,582	7,863	8,148
Tutong	5,779	6,002	6,223
Temburong	1,267	1,327	1,373
	<b>2022</b>	<b>2023</b>	<b>2024</b>

**Number of Arrivals by Purpose of Entry  
at Brunei International Airport (Person)**

Holiday	10,555	52,554	115,946
Business	8,623	13,243	28,525
Relatives	6,871	18,809	44,285
Transit	3,590	18,383	36,184
Exhibition	151	1,010	2,622
Government	2,579	4,332	9,366
Others	3,332	25,299	31,354
<b>Total</b>	<b>35,701</b>	<b>133,630</b>	<b>268,282</b>

NOTES

- (1) Excluding Royal Brunei Armed Forces, Royal Brunei Police Force and Gurkha Reserve Unit.
- (2) Including schools under Prime Minister's Office, Ministry of Religious Affairs, Ministry of Culture, Youth and Sports and private schools.
- (3) Based on number of licenses issued annually by Maritime and Port Authority of Brunei Darussalam.
- (4) Mobile Broadband subscription includes both USB dongle/MIFI and handset.
- (5) Postal data handled by the Postal Services Department only.
- (6) Crime cases handled by the Royal Brunei Police Force and Narcotics Control Bureau only.



NOTES

f.o.b.	- Free on board
c.i.f.	- Cost, insurance and freight
r	- Revised
p	- Provisional
USD	- US Dollar
BND	- Brunei Dollar
Kbbl/d	- Thousand Barrels per day
Kboe/d	- Thousand Barrels of Oil Equivalent per day
MMBtu/d	- Million British thermal unit per day
m <sup>3</sup>	- Cubic Metre
MW	- Mega Watt
GWh	- Giga Watt hour
pcs	- Pieces
°C	- Degree Celcius
-	- Nil
...	- Not Available

Total inside the tables may not tally due to rounding

LIST OF SOURCES

MINISTRY	DEPARTMENT(S)
Prime Minister’s Office	Attorney General’s Chambers State Judiciary Department Public Service Department Royal Brunei Police Force Narcotics Control Bureau Energy Department
Ministry of Finance and Economy	Department of Economic Planning and Statistics Treasury Department Darussalam Enterprise (DARE), Brunei Economic Development Board (BEDB) Brunei Darussalam Central Bank (BDCB) Tabung Amanah Pekerja (TAP)
Ministry of Home Affairs	Department of Immigration and National Registration District Offices
Ministry of Defence	Department of Development and Work Services
Ministry of Health	Department of Policy and Planning
Ministry of Development	Public Works Department - Department of Water Services - Department of Road
Ministry of Education	Department of Planning, Development and Research Department of Higher Education

# LIST OF SOURCES

MINISTRY	DEPARTMENT(S)
Ministry of Primary Resources and Tourism	Agriculture and Agrifood Department Forestry Department Fisheries Department Tourism Development Department
Ministry of Culture, Youth and Sports	Community Development Department
Ministry of Transport and Infocommunications	Department of Civil Aviation Land Transport Department Postal Services Department Brunei Darussalam Meteorological Department Maritime and Port Authority of Brunei Darussalam (MPABD) Authority for Info-Communications Technology Industry of Brunei Darussalam (AITI)
Other Agencies	Brunei Insurance and Takaful Association (BITA) Muara Port Company Sdn Bhd



@statistics.jpes



https://deps.mofe.gov.bn



Department of Economic Planning and Statistics  
4th Floor, Ministry of Finance and Economy Building  
Commonwealth Drive  
Bandar Seri Begawan BB3910  
Brunei Darussalam



Info.statistics@jpes.gov.bn

ISBN 978-99917-72-66-0

