



جباتن قرانچن ايكونومي دان ستاتيسٲك

DEPARTMENT OF ECONOMIC PLANNING AND STATISTICS

MINISTRY OF FINANCE AND ECONOMY

BRUNEI DARUSSALAM

# RETAIL SALES INDEX

SECOND QUARTER 2025  
(2019=100)



## RETAIL SALES INDEX SECOND QUARTER (Q2) 2025

**Year-on-Year**  
**Apr-Jun 2025 | Apr-Jun 2024**

**VALUE CHANGE: ▼ -6.2%**



Textiles, Wearing Apparel and Footwear

▼ -21.4%



Furniture and Household Equipment

▼ -14.8%



Department Store

▼ -9.8%



Hardware, Paints and Glass in specialized stores

▼ -6.6%



Supermarket

▼ -5.9%

**VOLUME CHANGE: ▼ -6.3%**



Textiles, Wearing Apparel and Footwear

▼ -21.7%



Watches and Jewellery

▼ -19.3%



Furniture and Household Equipment

▼ -13.2%



Department Store

▼ -9.4%



Supermarket

▼ -5.6%

**VALUE OF SALES: BND394.7 MILLION**

## Highlights

In the second quarter (Q2) 2025, retail sales recorded a negative growth of 6.2 per cent year-on-year, after decreasing by 2.0 per cent in Q1 2025. On a quarter-on-quarter basis, retail sales also recorded a decrease by 9.9 per cent following an increase of 4.4 per cent in Q1 2025.

The total value of retail sales in Q2 2025 was estimated at BND394.7 million. Almost one-third (26.3 per cent) was contributed by Department Stores with sales worth BND103.7 million, followed by Supermarkets (BND70.3 million or 17.8 per cent).

In terms of volume, retail sales recorded a negative growth of 6.3 per cent year-on-year in Q2 2025, after decreasing by 2.6 per cent in Q1 2025. On a quarter-on-quarter basis, retail sales also recorded a negative growth of 11.4 per cent after increasing by 6.0 per cent in Q1 2025 (**Table 1**).

**Table 1: Retail Sales Index (RSI), Q2 2025**

	Index (2019=100)			Change (%)	
	Q2 2024	Q1 2025	Q2 2025	Q2 2025 / Q2 2024	Q2 2025 / Q1 2025
<b>Sales value</b>	108.5	113.0	101.8	-6.2	-9.9
<b>Sales volume</b>	103.4	109.3	96.8	-6.3	-11.4

Notes: p = provisional    r = revised    y-o-y = year on year    q-o-q = quarter on quarter

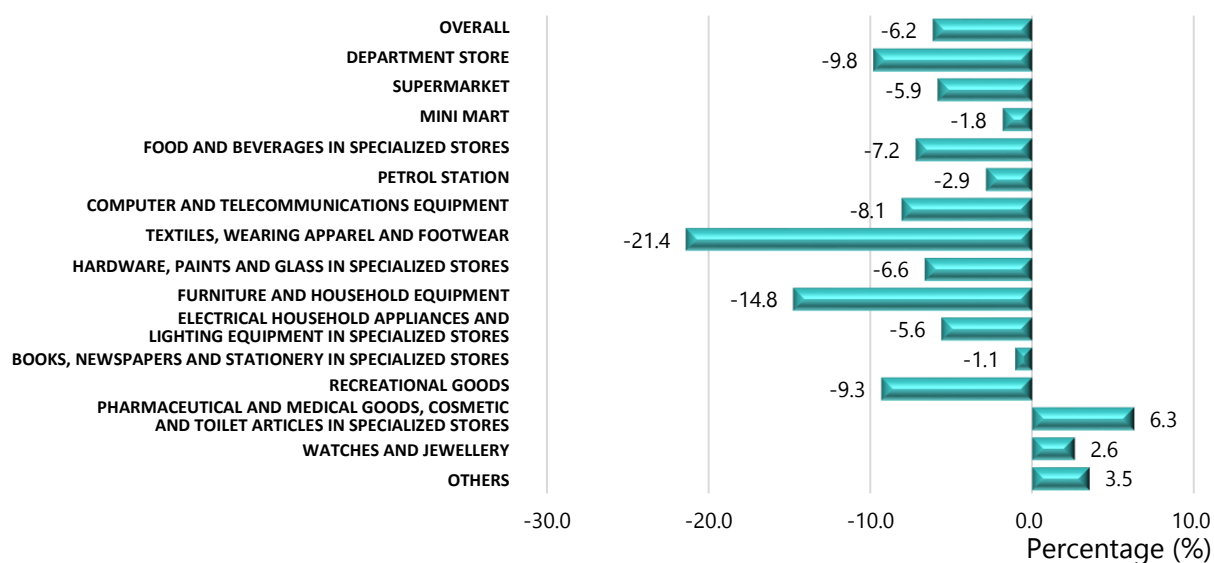
## Year-On-Year Change

### Sales Value

In terms of value, retail sales recorded a decrease of 6.2 per cent in Q2 2025 compared to Q2 2024. This was due to a fall in domestic demand.

The lower demand in Q2 2025 was reflected in the decrease in sales of more than two-thirds of the retail activities, among the most affected was Department Store 9.8 per cent; Supermarket 5.9 per cent; Textiles, Wearing Apparel and Footwear 21.4 per cent; Hardware, Paints and Glass in specialized stores 6.6 per cent; and Furniture and Household Equipment 14.8 per cent (**Figure 1**).

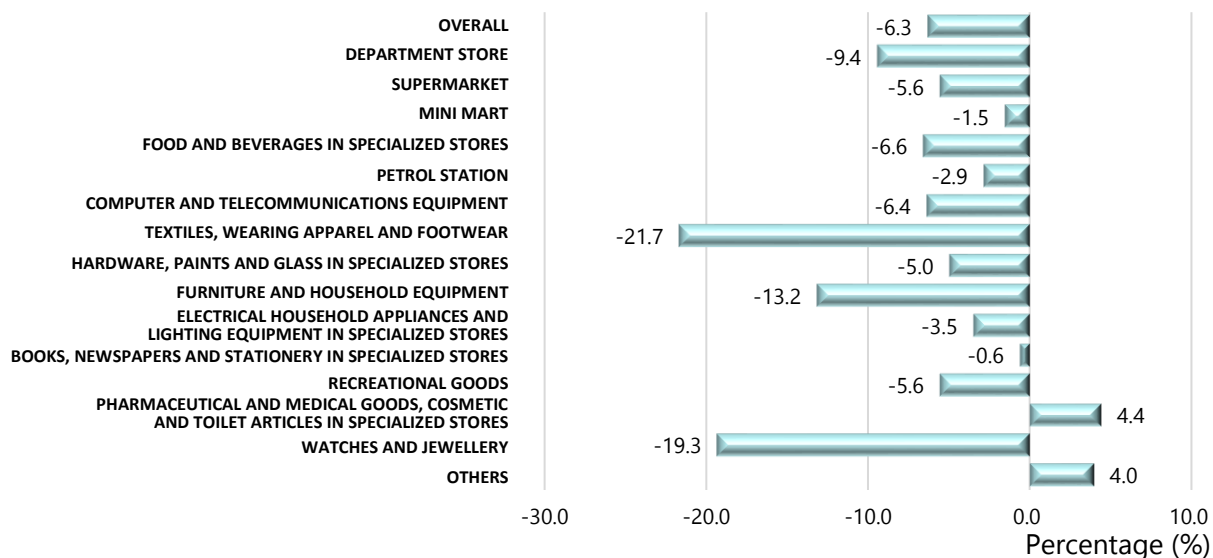
**Figure 1: Retail Sales Index Year-on-Year Value Change, Q2 2025**



### Sales Volume

In terms of volume, retail sales volume recorded a decrease of 6.3 per cent in Q2 2025 compared to Q2 2024. This was mainly attributed to the decrease in the sales volume in Department Store 9.4 per cent; followed by sales volume in Supermarket 5.6 per cent; sales volume of Textiles, Wearing Apparel and Footwear 21.7 per cent; sales volume of Watches and Jewellery 19.3 per cent; and sales volume of Furniture and Household Equipment 13.2 per cent (**Figure 2**).

**Figure 2: Retail Sales Index Year-on-Year Volume Change, Q2 2025**



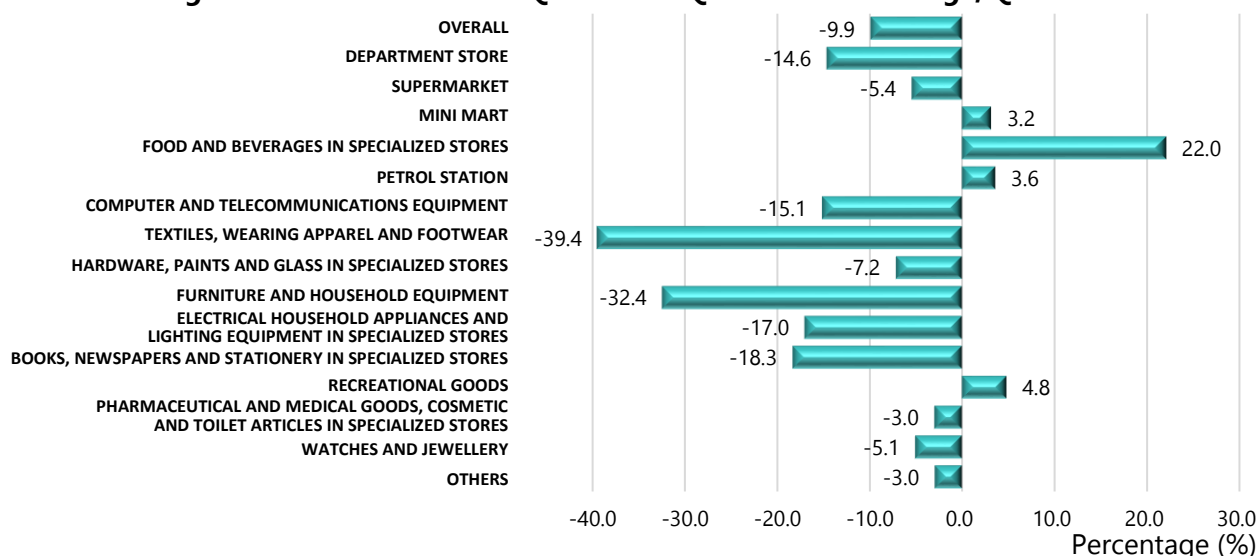
### Quarter-On-Quarter Change

#### Sales Value

In terms of value, retail sales recorded a decrease of 9.9 per cent in Q2 2025 compared to Q1 2025. This was mainly attributed to the decrease in the sales at Department Store by 14.6 per cent.

Almost two-thirds of the retail activities recorded negative growths, among the highest included Department Store 14.6 per cent; Textiles, Wearing Apparel and Footwear 39.4 per cent; Electrical Household Appliances and Lighting Equipment in specialized stores 17.0 per cent; Furniture and Household Equipment 32.4 per cent; and Supermarket 5.4 per cent (**Figure 3**).

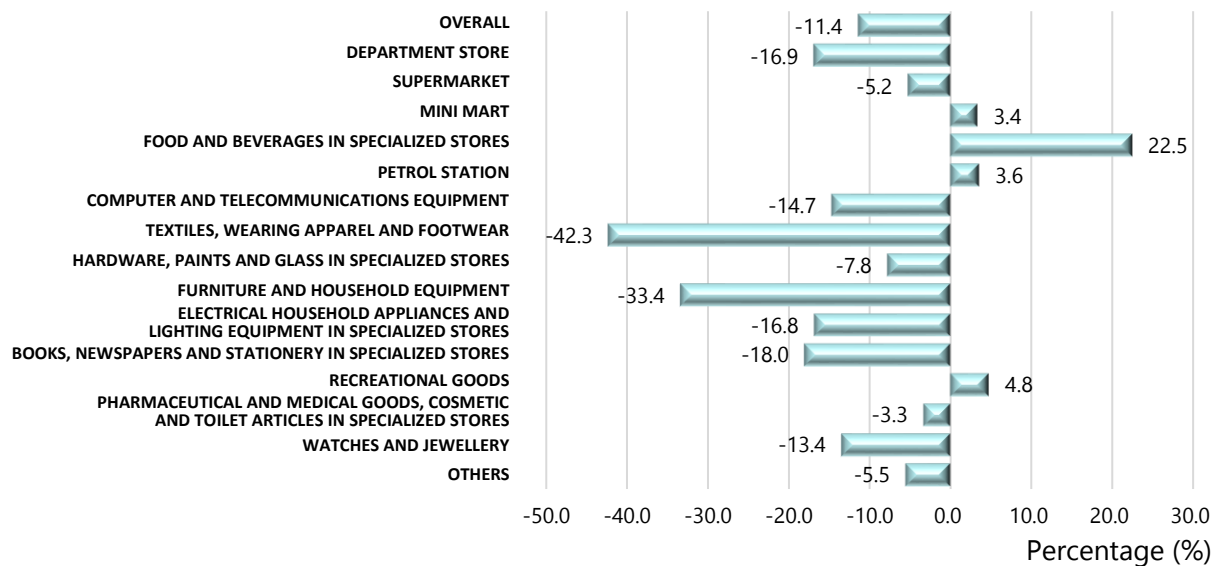
**Figure 3: Retail Sales Index Quarter-on-Quarter Value Change, Q2 2025**



## Sales Volume

In terms of volume, retail sales volume recorded a decrease of 11.4 per cent in Q2 2025 compared to Q1 2025. This was mainly attributed to the decrease in the sales volume in Department Store 16.9 per cent; sales volume of Textiles, Wearing Apparel and Footwear 42.3 per cent; sales volume of Electrical Household Appliances and Lighting Equipment in specialized stores 16.8 per cent; sales volume of Furniture and Household Equipment 33.4 per cent; and sales volume in Supermarket 5.2 per cent (**Figure 4**).

**Figure 4: Retail Sales Index Quarter-on-Quarter Volume Change, Q2 2025**



## TECHNICAL NOTES

### Introduction

Retail trade refers to the resale (sale without transformation) of new and used goods mainly to the general public for personal or household consumption or utilization. Retail trade is one of the important sectors that contributes to Brunei Darussalam's economy, accounting for nearly 20 per cent of the number of enterprises; employing around 11 per cent of the workforce; and generating about 6 per cent of the total operating revenue of the private sector in 2019.

The Retail Sales Index (RSI) measures the movements of retail sales activities. It serves as a leading economic indicator of the retail trade performance as well as consumer spending behavior.

### Scope and Coverage

The Retail Trade activities are classified in accordance with the Brunei Darussalam Standard Industrial Classification (BDSIC) 2011 under Division 47 – Retail Trade, Except of Motor Vehicles and Motorcycles, which is based on the United Nation's International Standard Industrial Classification (ISIC), Revision 4.

Group	Group Description
<b>471</b>	Retail sale of non-specialized stores
<b>472</b>	Retail sale of food and beverages in specialized stores
<b>473</b>	Retail sale of automotive fuel in specialized stores
<b>474</b>	Retail sale of information and communication equipment in specialized stores
<b>475</b>	Retail sale of other household equipment in specialized stores
<b>476</b>	Retail sale of cultural and recreational goods in specialized stores
<b>477</b>	Retail sale of other goods in specialized stores
<b>478</b>	Retail sale via stalls and markets
<b>479</b>	Retail trade not in stores, stalls or markets

### Data Sources

RSI is compiled using data from the Quarterly Survey of Businesses (QSB) conducted by the Department of Economic Planning and Statistics (JPES) every quarter. A sample of 438 enterprises are covered in the QSB for retail trade activities.

The weight for each activity reflects its relative importance in the overall retail trade sector. The weights are computed based on the retail sales of each activity obtained from the Annual Census of Enterprises (ACE) for reference year 2019.

### Index Compilation

The overall RSI is a weighted average of indices at the detailed activity level. The sales index at the activity level is derived by aggregating the sales value of enterprises belonging to the same activity and dividing it by the average quarterly sales for the same activity in the base year (2019). The overall RSI is then computed by summing all the weighted activities indices using the Laspeyres formula.

The indices and percentage changes will be published to one decimal place in the RSI reports. However, the computation of percentage changes is based on the unrounded index values.

The indices are reported both in value and volume terms. The indices in value terms measure the changes in sales value which may be due to changes in both price and quantity. The indices in volume terms measure the changes in volume of the retail trade activities. These are done by removing the price effect by adjusting the nominal value using price deflators of the reference quarter.

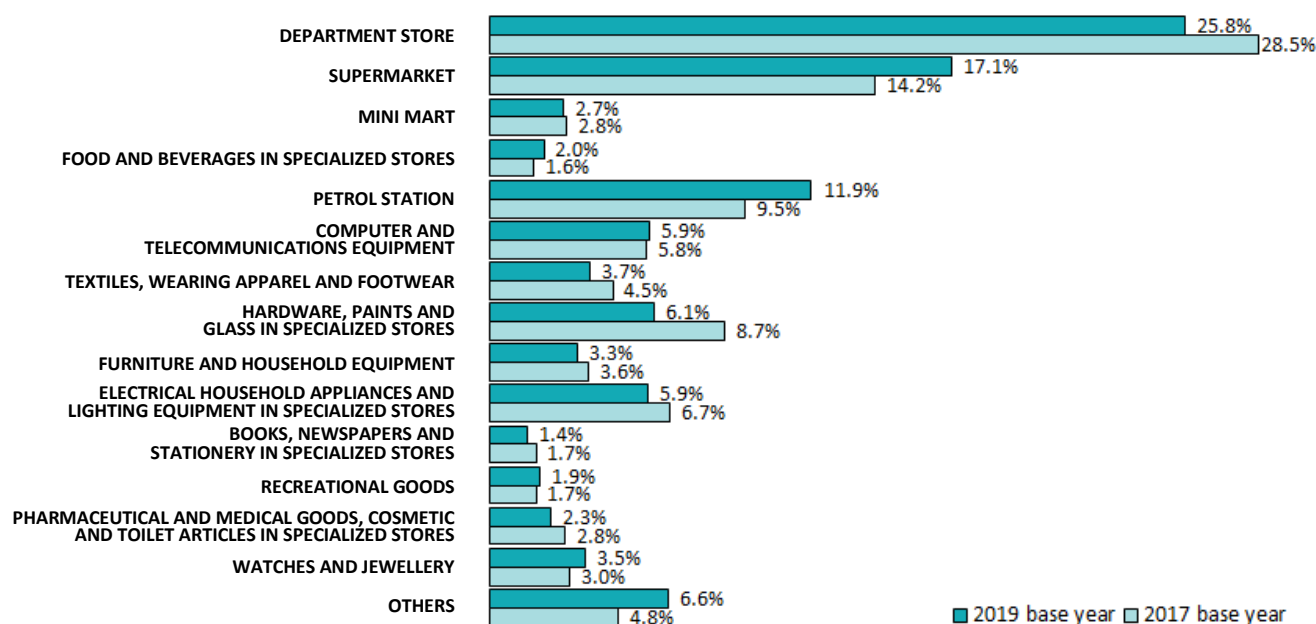
## Rebasing of Index

The Retail Sales Index (RSI) has been rebased to the year 2019. The weights for the new RSI series were derived from the results of the Annual Census of Enterprises (ACE) 2019.

The RSI is rebased to reflect changes in the structure of the retail trade sector. The methodology, coverage and weights are reviewed and updated during the rebasing exercise. The rebasing of the RSI series from base year 2017 to 2019 is the first rebasing exercise since its compilation in 2020.

In comparison between the old and new weights for the retail trade activities, the most significant change in weights is that of Supermarket which increased from 14.2 per cent of total retail trade to 17.1 per cent, followed by Department Store which decreased from 28.5 per cent to 25.8 per cent (**Figure 1**).

**Figure 1: Comparison of weights between 2019 base year and 2017 base year**



## Revision Policy

Revisions will only be made to the published figures for the previous periods if there are any changes based on the latest available data.

Annex 1: Quarterly Retail Sales Index (2019 = 100), Value

No.	Description	Weights	2019	Q1 2023	Q2 2023	Q3 2023	Q4 2023	2023	Q1 2024	Q2 2024	Q3 2024	Q4 2024	2024	Q1 2025	Q2 2025
1	Department store	2,576	100.0	117.3	122.6	108.6	113.9	115.6	120.7	115.2	103.5	110.2	112.4	121.7	103.9
2	Supermarket	1,711	100.0	115.1	117.8	113.0	113.7	114.9	116.2	112.6	110.3	109.4	112.2	112.1	106.0
3	Mini mart	271	100.0	136.6	141.3	136.4	136.8	137.8	141.3	125.6	126.3	118.0	127.8	119.5	123.3
4	Food and beverages in specialized stores	200	100.0	98.9	103.9	95.4	97.4	98.9	116.3	104.2	94.3	92.3	101.8	79.2	96.7
5	Petrol station	1,192	100.0	95.4	98.3	100.3	96.1	97.5	99.3	97.4	97.3	93.3	96.8	91.4	94.6
6	Computer and telecommunications equipment	593	100.0	88.6	76.9	93.0	122.2	95.2	79.7	79.7	76.0	111.7	86.8	86.4	73.3
7	Textiles, wearing apparel and footwear	373	100.0	112.8	116.5	81.3	101.1	102.9	127.9	102.6	77.3	100.7	102.1	133.1	80.7
8	Hardware, paints and glass in specialized stores	607	100.0	110.6	115.2	115.2	146.7	121.9	122.6	108.0	107.8	100.3	109.7	108.6	100.9
9	Furniture and household equipment	326	100.0	92.6	101.6	80.8	95.6	92.7	103.7	81.9	71.4	83.9	85.2	103.3	69.8
10	Electrical household appliances and lighting equipment in specialized stores	586	100.0	115.3	126.0	112.8	117.5	117.9	133.3	117.5	99.8	120.0	117.6	133.7	110.9
11	Books, newspapers and stationery in specialized stores	137	100.0	121.1	99.2	103.8	124.4	112.1	122.6	97.2	98.9	124.5	110.8	117.7	96.1
12	Recreational goods	186	100.0	125.6	126.2	121.6	141.1	128.6	116.2	112.6	112.8	119.0	115.2	97.4	102.1
13	Pharmaceutical and medical goods, cosmetic and toilet articles in specialized stores	227	100.0	127.1	127.5	119.0	117.5	122.8	102.3	104.8	101.9	103.4	103.1	114.8	111.4
14	Watches and jewellery	355	100.0	113.8	123.7	105.3	110.5	113.4	113.9	122.8	97.1	121.3	113.8	132.8	126.1
15	Others	659	100.0	126.3	123.3	113.7	118.7	120.5	120.8	115.6	114.7	123.3	118.6	123.3	119.6
	<b>Total</b>	<b>10,000</b>	<b>100.0</b>	<b>112.1</b>	<b>115.1</b>	<b>107.3</b>	<b>114.6</b>	<b>112.3</b>	<b>115.3</b>	<b>108.5</b>	<b>101.3</b>	<b>108.2</b>	<b>108.3</b>	<b>113.0</b>	<b>101.8</b>



Annex 2: Quarterly Retail Estimated Value of Sales (BND Million)

No.	Description	Weights	2019	Q1 2023	Q2 2023	Q3 2023	Q4 2023	2023	Q1 2024	Q2 2024	Q3 2024	Q4 2024	2024	Q1 2025	Q2 2025
1	Department store	2,576	99.8	117.1	122.4	108.4	113.7	461.6	120.5	115.0	103.3	110.0	448.8	121.5	103.7
2	Supermarket	1,711	66.3	76.3	78.1	75.0	75.4	304.9	77.1	74.7	73.2	72.6	297.6	74.4	70.3
3	Mini mart	271	10.5	14.4	14.9	14.3	14.4	58.0	14.9	13.2	13.3	12.4	53.8	12.6	13.0
4	Food and beverages in specialized stores	200	7.8	7.7	8.1	7.4	7.5	30.7	9.0	8.1	7.3	7.2	31.5	6.1	7.5
5	Petrol station	1,192	46.2	44.1	45.4	46.3	44.4	180.2	45.9	45.0	44.9	43.1	179.0	42.2	43.7
6	Computer and telecommunications equipment	593	23.0	20.4	17.7	21.4	28.1	87.6	18.3	18.3	17.5	25.7	79.9	19.9	16.9
7	Textiles, wearing apparel and footwear	373	14.5	16.3	16.9	11.8	14.6	59.6	18.5	14.8	11.2	14.6	59.1	19.3	11.7
8	Hardware, paints and glass in specialized stores	607	23.5	26.0	27.1	27.1	34.6	114.8	28.9	25.4	25.4	23.6	103.3	25.6	23.8
9	Furniture and household equipment	326	12.6	11.7	12.8	10.2	12.1	46.8	13.1	10.3	9.0	10.6	43.1	13.0	8.8
10	Electrical household appliances and lighting equipment in specialized stores	586	22.7	26.2	28.6	25.6	26.7	107.2	30.3	26.7	22.7	27.3	106.9	30.4	25.2
11	Books, newspapers and stationery in specialized stores	137	5.3	6.4	5.3	5.5	6.6	23.9	6.5	5.2	5.3	6.6	23.6	6.3	5.1
12	Recreational goods	186	7.2	9.0	9.1	8.8	10.2	37.0	8.4	8.1	8.1	8.6	33.1	7.0	7.3
13	Pharmaceutical and medical goods, cosmetic and toilet articles in specialized stores	227	8.8	11.2	11.2	10.4	10.3	43.1	9.0	9.2	8.9	9.1	36.2	10.1	9.8
14	Watches and jewellery	355	13.7	15.6	17.0	14.5	15.2	62.3	15.7	16.9	13.3	16.7	62.5	18.3	17.3
15	Others	659	25.6	32.3	31.5	29.0	30.3	123.2	30.9	29.5	29.3	31.5	121.2	31.5	30.6
	<b>Total</b>	<b>10,000</b>	<b>387.6</b>	<b>434.7</b>	<b>446.1</b>	<b>415.9</b>	<b>444.2</b>	<b>1,740.9</b>	<b>446.9</b>	<b>420.6</b>	<b>392.8</b>	<b>419.5</b>	<b>1,679.7</b>	<b>438.1</b>	<b>394.7</b>

Annex 3: Year-On-Year Growth Rate of Quarterly Retail Sales Index (2019 = 100) (Per cent %), Value

No.	Description	Weights	Q1 2023	Q2 2023	Q3 2023	Q4 2023	2023	Q1 2024	Q2 2024	Q3 2024	Q4 2024	2024	Q1 2025	Q2 2025	
			Changes											Changes	Contribution
1	Department store	2,576	-4.3	-7.2	-5.8	-4.2	-5.4	2.9	-6.0	-4.7	-3.3	-2.8	0.9	-9.8	43.6
2	Supermarket	1,711	-3.0	-0.8	0.8	-2.3	-1.4	1.0	-4.4	-2.4	-3.8	-2.4	-3.6	-5.9	16.9
3	Mini mart	271	-0.6	4.5	-2.1	-0.9	0.2	3.5	-11.1	-7.4	-13.8	-7.2	-15.4	-1.8	0.9
4	Food and beverages in specialized stores	200	12.0	19.7	11.4	6.4	12.3	17.5	0.2	-1.2	-5.2	2.9	-31.9	-7.2	2.2
5	Petrol station	1,192	23.8	8.7	6.7	7.0	11.1	4.1	-0.9	-3.0	-2.9	-0.7	-8.0	-2.9	5.0
6	Computer and telecommunications equipment	593	-24.1	-27.3	6.2	2.0	-11.4	-10.1	3.7	-18.3	-8.6	-8.8	8.3	-8.1	5.7
7	Textiles, wearing apparel and footwear	373	8.4	-16.0	-11.7	-2.2	-6.0	13.4	-11.9	-4.9	-0.4	-0.8	4.1	-21.4	12.3
8	Hardware, paints and glass in specialized stores	607	-1.9	6.7	-7.3	31.2	6.8	10.8	-6.2	-6.4	-31.6	-10.0	-11.4	-6.6	6.5
9	Furniture and household equipment	326	-2.0	-7.2	-3.3	4.0	-2.3	12.0	-19.4	-11.7	-12.2	-8.0	-0.5	-14.8	5.9
10	Electrical household appliances and lighting equipment in specialized stores	586	-7.5	-4.2	11.2	6.6	0.8	15.6	-6.8	-11.5	2.1	-0.2	0.3	-5.6	5.8
11	Books, newspapers and stationery in specialized stores	137	-6.2	-4.7	-4.0	-8.6	-6.1	1.2	-2.0	-4.7	0.1	-1.2	-4.0	-1.1	0.2
12	Recreational goods	186	-1.4	-1.2	-4.3	3.7	-0.7	-7.5	-10.8	-7.2	-15.6	-10.5	-16.1	-9.3	2.9
13	Pharmaceutical and medical goods, cosmetic and toilet articles in specialized stores	227	-26.8	-12.7	-20.9	-10.0	-18.3	-19.5	-17.8	-14.3	-12.0	-16.0	12.3	6.3	-2.2
14	Watches and jewellery	355	-21.1	-18.5	-17.5	-6.9	-16.4	0.1	-0.7	-7.8	9.7	0.4	16.6	2.6	-1.7
15	Others	659	-3.4	-9.9	-13.4	-3.7	-7.7	-4.3	-6.3	0.9	3.9	-1.6	2.0	3.5	-4.0
	<b>Total</b>	<b>10,000</b>	<b>-3.6</b>	<b>-5.2</b>	<b>-3.2</b>	<b>0.8</b>	<b>-2.9</b>	<b>2.8</b>	<b>-5.7</b>	<b>-5.6</b>	<b>-5.6</b>	<b>-3.5</b>	<b>-2.0</b>	<b>-6.2</b>	<b>100.0</b>

Annex 4: Quarter-On-Quarter Growth Rate of Quarterly Retail Sales Index (2019 = 100) (Per cent %), Value

No.	Description	Weights	Q1 2023	Q2 2023	Q3 2023	Q4 2023	Q1 2024	Q2 2024	Q3 2024	Q4 2024	Q1 2025	Q2 2025	
			Changes									Changes	Contribution
1	Department store	2,576	-1.4	4.6	-11.4	4.9	5.9	-4.5	-10.2	6.5	10.5	-14.6	41.0
2	Supermarket	1,711	-1.1	2.4	-4.0	0.6	2.2	-3.1	-2.0	-0.8	2.4	-5.4	9.3
3	Mini mart	271	-1.0	3.4	-3.4	0.3	3.3	-11.1	0.6	-6.6	1.3	3.2	-0.9
4	Food and beverages in specialized stores	200	8.1	5.0	-8.2	2.1	19.4	-10.4	-9.5	-2.1	-14.2	22.0	-3.1
5	Petrol station	1,192	6.2	3.1	2.0	-4.2	3.4	-1.9	-0.2	-4.1	-2.0	3.6	-3.5
6	Computer and telecommunications equipment	593	-26.0	-13.3	21.0	31.4	-34.8	0.0	-4.6	46.9	-22.7	-15.1	6.9
7	Textiles, wearing apparel and footwear	373	9.1	3.3	-30.2	24.4	26.5	-19.8	-24.7	30.3	32.2	-39.4	17.5
8	Hardware, paints and glass in specialized stores	607	-1.1	4.2	0.0	27.4	-16.5	-11.8	-0.2	-6.9	8.3	-7.2	4.2
9	Furniture and household equipment	326	0.7	9.7	-20.4	18.3	8.5	-21.1	-12.8	17.6	23.0	-32.4	9.8
10	Electrical household appliances and lighting equipment in specialized stores	586	4.5	9.3	-10.5	4.2	13.4	-11.8	-15.0	20.2	11.4	-17.0	11.9
11	Books, newspapers and stationery in specialized stores	137	-11.0	-18.1	4.7	19.8	-1.4	-20.7	1.8	25.9	-5.5	-18.3	2.6
12	Recreational goods	186	-7.7	0.5	-3.6	16.0	-17.7	-3.1	0.2	5.5	-18.2	4.8	-0.8
13	Pharmaceutical and medical goods, cosmetic and toilet articles in specialized stores	227	-2.6	0.3	-6.7	-1.3	-12.9	2.4	-2.7	1.4	11.0	-3.0	0.7
14	Watches and jewellery	355	-4.1	8.7	-14.9	4.9	3.1	7.8	-20.9	24.8	9.5	-5.1	2.1
15	Others	659	2.5	-2.3	-7.9	4.4	1.8	-4.4	-0.8	7.5	0.0	-3.0	2.1
	<b>Total</b>	<b>10,000</b>	<b>-1.4</b>	<b>2.6</b>	<b>-6.8</b>	<b>6.8</b>	<b>0.6</b>	<b>-5.9</b>	<b>-6.6</b>	<b>6.8</b>	<b>4.4</b>	<b>-9.9</b>	<b>100.0</b>

Annex 5: Quarterly Retail Sales Volume Index (2019 = 100), Volume

No.	Description	Weights	2019	Q1 2023	Q2 2023	Q3 2023	Q4 2023	2023	Q1 2024	Q2 2024	Q3 2024	Q4 2024	2024	Q1 2025	Q2 2025
1	Department store	2,576	100.0	111.8	118.5	103.9	110.6	111.2	122.6	112.5	100.4	107.1	110.6	122.6	101.9
2	Supermarket	1,711	100.0	107.6	110.3	105.3	105.4	107.2	107.6	104.5	102.7	102.0	104.3	104.1	98.7
3	Mini mart	271	100.0	127.7	132.3	127.0	126.8	128.5	130.8	116.6	117.6	109.9	118.8	111.0	114.8
4	Food and beverages in specialized stores	200	100.0	87.6	92.3	84.1	85.1	87.3	101.3	91.2	83.0	81.5	89.3	69.5	85.2
5	Petrol station	1,192	100.0	95.4	98.3	100.3	96.1	97.5	99.3	97.4	97.3	93.3	96.8	91.4	94.7
6	Computer and telecommunications equipment	593	100.0	81.5	72.2	87.9	115.2	89.1	76.8	77.1	74.1	109.2	84.3	84.6	72.2
7	Textiles, wearing apparel and footwear	373	100.0	109.3	114.5	79.2	101.2	101.0	138.3	102.7	76.3	100.1	103.6	139.4	80.5
8	Hardware, paints and glass in specialized stores	607	100.0	100.8	105.0	105.4	134.6	111.4	112.3	98.7	99.4	94.0	101.2	101.7	93.8
9	Furniture and household equipment	326	100.0	89.1	99.2	77.6	92.5	89.6	103.6	81.2	70.5	82.8	84.5	105.8	70.5
10	Electrical household appliances and lighting equipment in specialized stores	586	100.0	112.6	122.4	110.5	115.2	115.2	132.1	116.8	100.0	120.7	117.4	135.5	112.7
11	Books, newspapers and stationery in specialized stores	137	100.0	116.3	95.3	99.9	119.7	107.8	118.1	93.6	95.4	120.0	106.8	113.5	93.0
12	Recreational goods	186	100.0	116.8	117.6	113.5	131.0	119.7	109.4	105.4	107.9	115.1	109.4	95.0	99.5
13	Pharmaceutical and medical goods, cosmetic and toilet articles in specialized stores	227	100.0	126.3	126.3	117.7	116.1	121.6	101.6	105.1	101.8	102.5	102.7	113.5	109.8
14	Watches and jewellery	355	100.0	90.7	94.5	81.0	85.7	87.9	85.7	82.9	64.5	75.4	76.8	77.3	66.9
15	Others	659	100.0	120.4	119.2	108.7	115.2	115.9	122.8	112.8	111.2	119.9	116.7	124.2	117.3
	<b>Total</b>	<b>10,000</b>	<b>100.0</b>	<b>106.1</b>	<b>109.5</b>	<b>101.6</b>	<b>109.0</b>	<b>106.5</b>	<b>112.2</b>	<b>103.4</b>	<b>96.6</b>	<b>103.2</b>	<b>103.8</b>	<b>109.3</b>	<b>96.8</b>

Annex 6: Year-On-Year Growth Rate of Quarterly Retail Sales Index (2019 = 100) (Per cent %), Volume

No.	Description	Weights	Q1 2023	Q2 2023	Q3 2023	Q4 2023	2023	Q1 2024	Q2 2024	Q3 2024	Q4 2024	2024	Q1 2025	Q2 2025	
			Changes											Changes	Contribution
1	Department store	2,576	-4.8	-7.7	-5.2	-4.0	-5.5	9.7	-5.0	-3.4	-3.1	-0.5	0.0	-9.4	41.9
2	Supermarket	1,711	-5.5	-2.4	-0.4	-3.6	-3.0	0.0	-5.3	-2.4	-3.3	-2.7	-3.3	-5.6	15.3
3	Mini mart	271	-3.2	2.9	-3.3	-2.1	-1.5	2.5	-11.9	-7.4	-13.3	-7.5	-15.1	-1.5	0.8
4	Food and beverages in specialized stores	200	7.3	16.7	9.3	4.2	9.3	15.6	-1.3	-1.3	-4.2	2.3	-31.3	-6.6	1.8
5	Petrol station	1,192	24.0	8.9	6.9	7.1	11.2	4.1	-0.9	-3.0	-2.9	-0.7	-8.0	-2.9	5.1
6	Computer and telecommunications equipment	593	-25.7	-26.9	6.8	2.2	-11.6	-5.7	6.8	-15.8	-5.2	-5.5	10.2	-6.4	4.5
7	Textiles, wearing apparel and footwear	373	9.3	-16.3	-10.7	-2.1	-5.6	26.6	-10.3	-3.6	-1.1	2.6	0.8	-21.7	12.7
8	Hardware, paints and glass in specialized stores	607	-7.8	4.2	-9.0	29.8	3.8	11.5	-6.0	-5.7	-30.2	-9.2	-9.4	-5.0	4.6
9	Furniture and household equipment	326	1.1	-4.7	-2.7	3.0	-1.0	16.2	-18.2	-9.2	-10.5	-5.7	2.1	-13.2	5.3
10	Electrical household appliances and lighting equipment in specialized stores	586	-8.3	-5.9	11.6	6.3	0.1	17.3	-4.6	-9.5	4.8	2.0	2.6	-3.5	3.7
11	Books, newspapers and stationery in specialized stores	137	-8.5	-5.8	-3.1	-7.9	-6.5	1.5	-1.7	-4.5	0.3	-1.0	-3.9	-0.6	0.1
12	Recreational goods	186	-2.8	-0.6	-3.0	4.2	-0.5	-6.3	-10.3	-4.9	-12.2	-8.6	-13.2	-5.6	1.7
13	Pharmaceutical and medical goods, cosmetic and toilet articles in specialized stores	227	-26.8	-13.3	-22.2	-11.2	-19.0	-19.6	-16.8	-13.5	-11.7	-15.5	11.8	4.4	-1.6
14	Watches and jewellery	355	-20.1	-19.7	-21.7	-11.1	-18.5	-5.5	-12.2	-20.4	-12.0	-12.6	-9.8	-19.3	8.7
15	Others	659	-4.0	-10.4	-12.8	-3.5	-7.7	2.0	-5.3	2.3	4.1	0.7	1.1	4.0	-4.5
	<b>Total</b>	<b>10,000</b>	<b>-4.6</b>	<b>-5.8</b>	<b>-3.4</b>	<b>0.3</b>	<b>-3.4</b>	<b>5.7</b>	<b>-5.6</b>	<b>-5.0</b>	<b>-5.4</b>	<b>-2.6</b>	<b>-2.6</b>	<b>-6.3</b>	<b>100.0</b>

Annex 7: Quarter-On-Quarter Growth Rate of Quarterly Retail Sales Index (2019 = 100) (Per cent %), Volume

No.	Description	Weights	Q1 2023	Q2 2023	Q3 2023	Q4 2023	Q1 2024	Q2 2024	Q3 2024	Q4 2024	Q1 2025	Q2 2025	
			Changes									Changes	Contribution
1	Department store	2,576	-2.9	6.0	-12.3	6.4	10.9	-8.3	-10.8	6.8	14.4	-16.9	42.7
2	Supermarket	1,711	-1.6	2.6	-4.6	0.1	2.1	-2.9	-1.7	-0.7	2.1	-5.2	7.5
3	Mini mart	271	-1.5	3.6	-4.0	-0.1	3.1	-10.9	0.9	-6.5	1.0	3.4	-0.8
4	Food and beverages in specialized stores	200	7.3	5.4	-9.0	1.2	19.0	-10.0	-8.9	-1.8	-14.7	22.5	-2.5
5	Petrol station	1,192	6.4	3.1	2.0	-4.2	3.4	-1.9	-0.2	-4.1	-2.0	3.6	-3.1
6	Computer and telecommunications equipment	593	-27.7	-11.3	21.7	31.0	-33.3	0.4	-4.0	47.5	-22.5	-14.7	5.9
7	Textiles, wearing apparel and footwear	373	5.7	4.8	-30.9	27.9	36.6	-25.7	-25.7	31.2	39.2	-42.3	17.6
8	Hardware, paints and glass in specialized stores	607	-2.8	4.2	0.4	27.7	-16.5	-12.1	0.7	-5.5	8.3	-7.8	3.9
9	Furniture and household equipment	326	-0.7	11.4	-21.8	19.2	12.0	-21.7	-13.2	17.5	27.8	-33.4	9.2
10	Electrical household appliances and lighting equipment in specialized stores	586	4.0	8.6	-9.7	4.3	14.7	-11.6	-14.4	20.7	12.3	-16.8	10.7
11	Books, newspapers and stationery in specialized stores	137	-10.5	-18.1	4.9	19.8	-1.4	-20.7	1.9	25.8	-5.4	-18.0	2.3
12	Recreational goods	186	-7.2	0.7	-3.5	15.5	-16.5	-3.7	2.4	6.7	-17.4	4.8	-0.7
13	Pharmaceutical and medical goods, cosmetic and toilet articles in specialized stores	227	-3.3	0.0	-6.8	-1.3	-12.5	3.5	-3.2	0.7	10.8	-3.3	0.7
14	Watches and jewellery	355	-5.9	4.2	-14.2	5.7	0.1	-3.3	-22.2	16.9	2.5	-13.4	3.0
15	Others	659	0.8	-1.0	-8.8	5.9	6.6	-8.1	-1.4	7.8	3.6	-5.5	3.6
	<b>Total</b>	<b>10,000</b>	<b>-2.4</b>	<b>3.2</b>	<b>-7.2</b>	<b>7.3</b>	<b>2.9</b>	<b>-7.9</b>	<b>-6.6</b>	<b>6.9</b>	<b>6.0</b>	<b>-11.4</b>	<b>100.0</b>