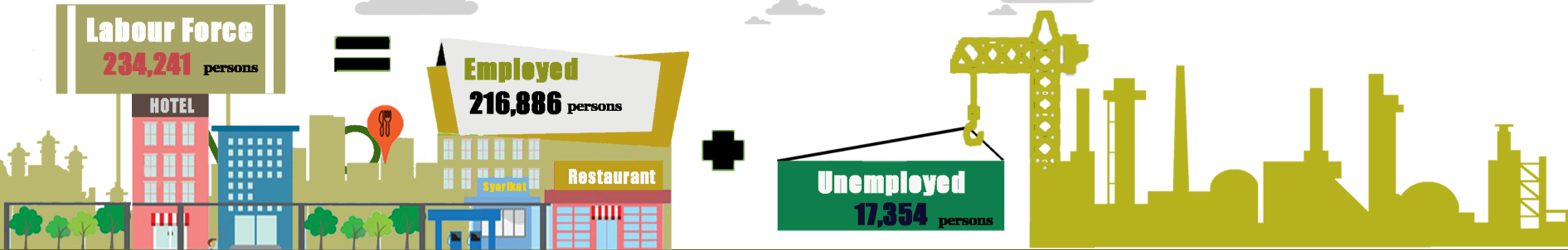
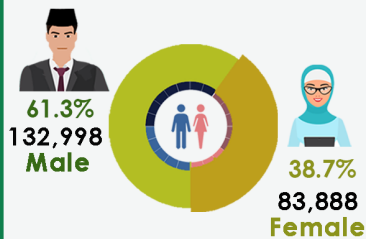


LABOUR FORCE SURVEY 2020



Sex



LFPR
65.2%
Labour Force Participation Rate

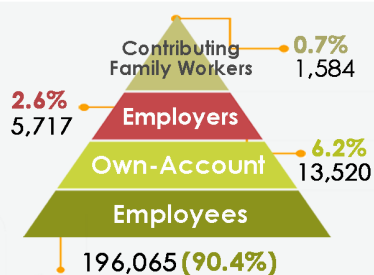
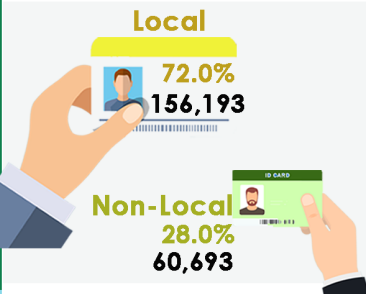


EmpPop
60.4%
Employment to Population Ratio

7.4%
JOB UER
Unemployment Rate

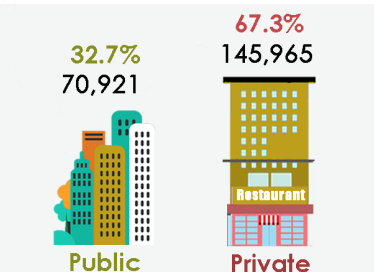
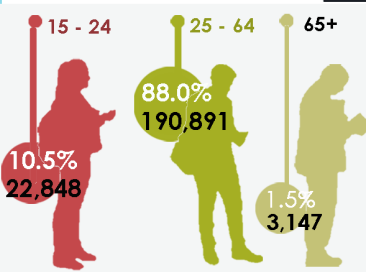
Rate

Residential Status



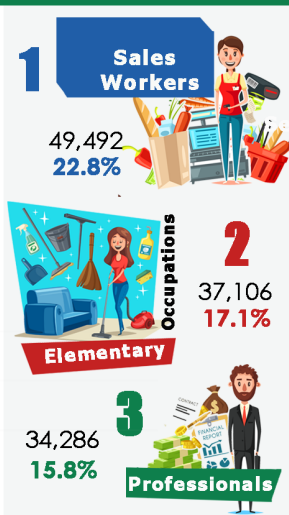
Employment Status

Age Group

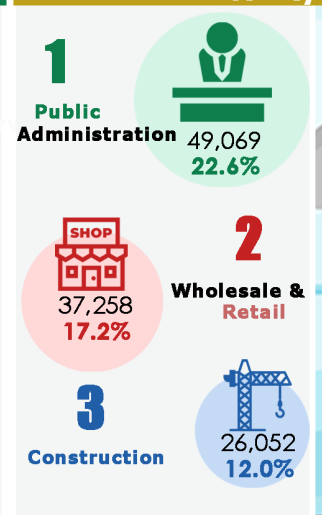


Sector

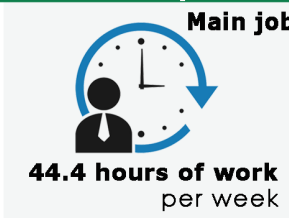
Top 3 Occupations



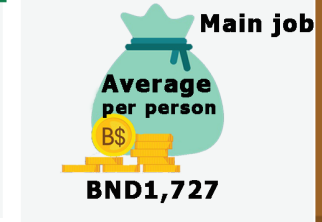
Top 3 Economic Activity



Average Hours Usually Worked



Average Monthly Income



EMPLOYED (E)

“ An individual aged 15 years and over, during in a given reference period:
 a) were engaged in any activity to produce goods or provide services for pay or profit; and
 b) employed persons “not at work” due to temporary absence from a job, or to working-time arrangements (such as shift work, flexitime and compensatory leave for overtime). ”

UNEMPLOYED (U)

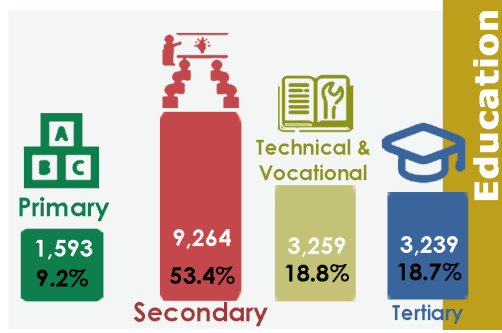
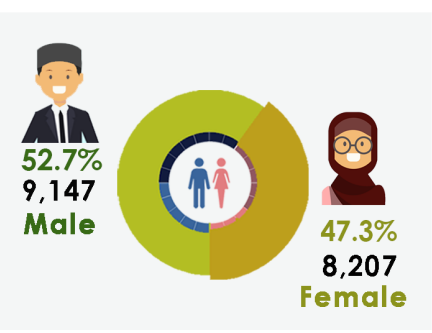


“ An individual aged 15 years and over who,

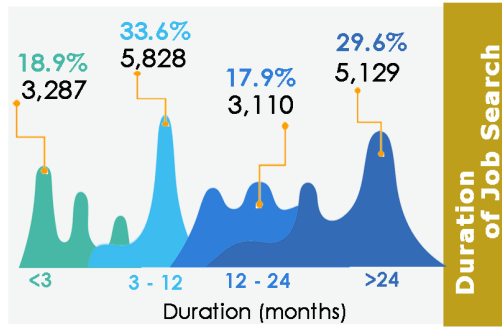
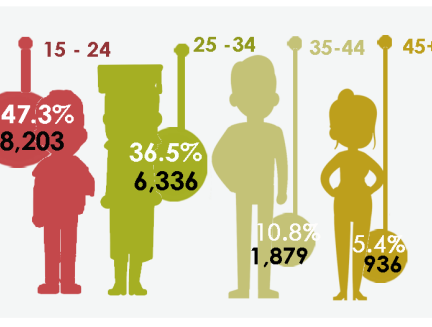
- a) were not in employment;
- b) carried out activities to seek employment during specified period; and
- c) were currently available to take up employment given a job opportunity.

”

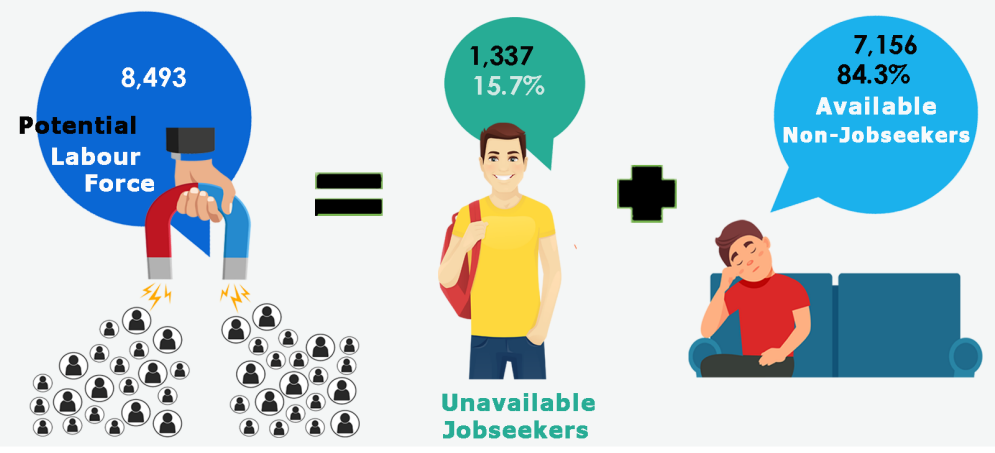
Sex



Age Group



Potential Labour Force



POTENTIAL LABOUR FORCE

“ An individual aged 15 years and over who, during the short period, were neither in employment nor in unemployment but who were considered as either:

- a) unavailable jobseekers (seeking employment but not currently available); or
- b) available non-jobseekers (currently available for employment but did not carry out activities to seek employment).

”

