

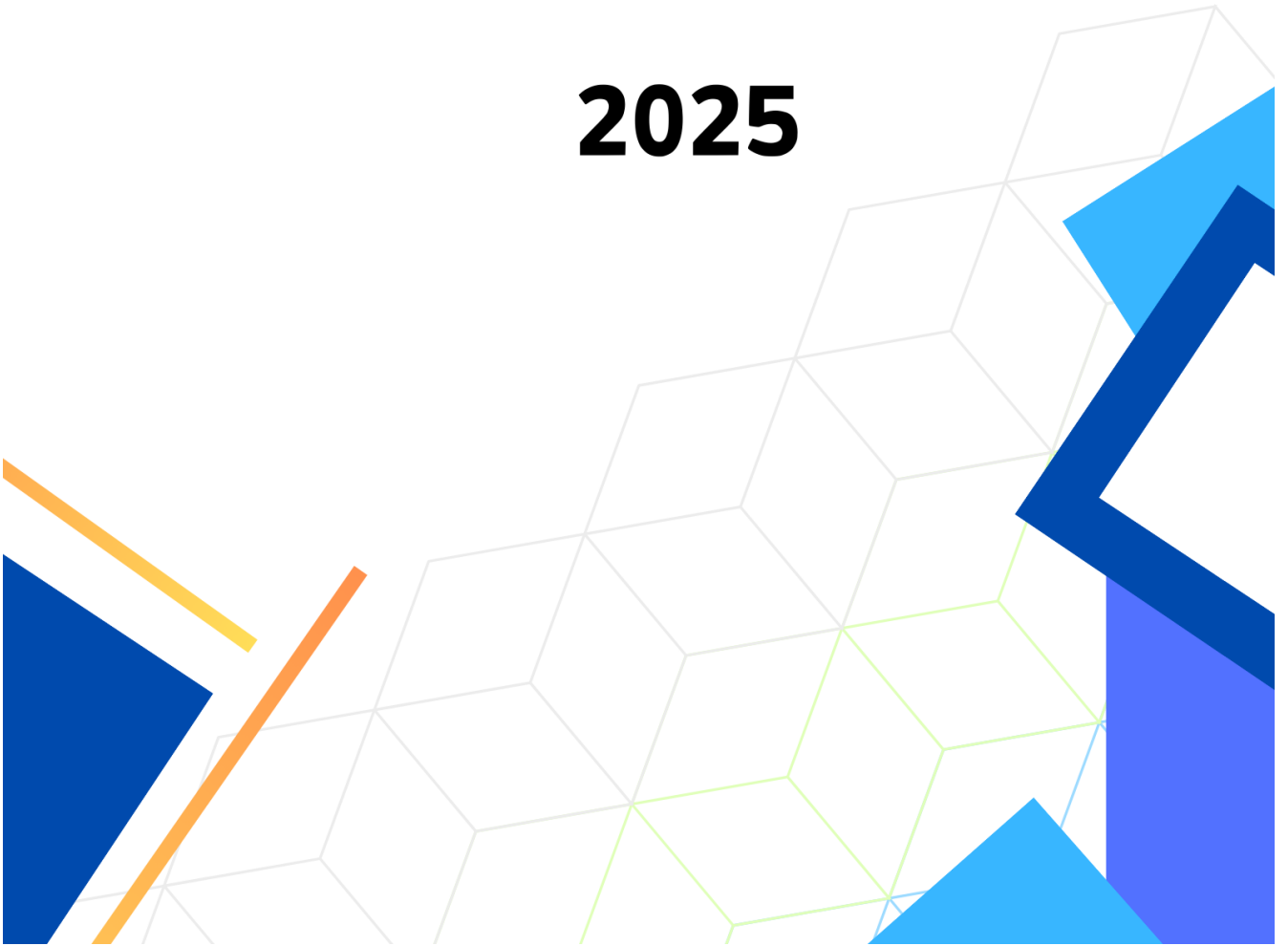


جباتن فرانچن ايكونومي دان ستاتيسٲك

DEPARTMENT OF ECONOMIC PLANNING AND STATISTICS
MINISTRY OF FINANCE AND ECONOMY
BRUNEI DARUSSALAM

INTERNATIONAL MERCHANDISE TRADE STATISTICS

MAY 2025



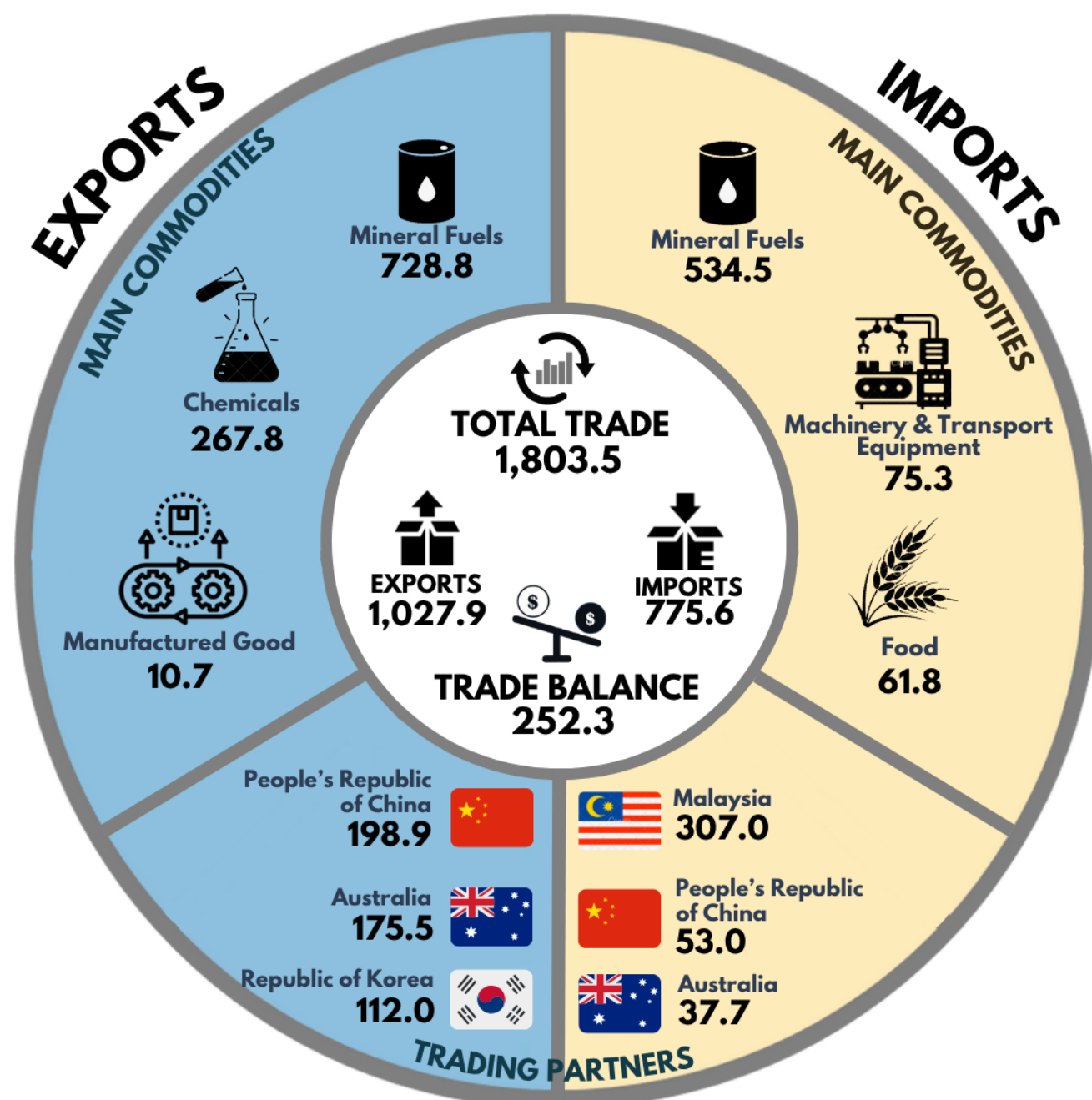
Website: deps.mofe.gov.bnEmail: info.statistics@jpes.gov.bnInstagram: [@statistics.jpes](https://www.instagram.com/statistics.jpes)

جباتن فرانچغن ايكونومي دان ستاتيستيك
 DEPARTMENT OF ECONOMIC PLANNING AND STATISTICS
 MINISTRY OF FINANCE AND ECONOMY
 BRUNEI DARUSSALAM

INTERNATIONAL MERCHANDISE TRADE STATISTICS

MAY 2025

BND Million



INTERNATIONAL MERCHANDISE TRADE STATISTICS (IMTS) MAY 2025

Highlights

Year-on-Year Change

Total trade for May 2025 was BND1,803.5 million, comprising exports of BND1,027.9 million and imports of BND775.6 million. This reflected a year-on-year decrease of 26.0 per cent from BND2,438.1 million in May 2024.

Furthermore, the trade balance decreased by 37.6 per cent to BND252.3 million (May 2025) from BND404.5 million in May 2024.

Month-on-Month Change

On a month-on-month basis, total trade fell by 7.0 per cent, decreasing from BND1,938.3 million in April 2025 to BND1,803.5 million in May 2025.

Table 1: Exports, Imports and Trade Balance

	Value (BND Million)					Change (%)		
	May-24	Apr-25	May-25 ^p	Jan-May	Jan-May ^p	May-25 ^p	May-25 ^p	Jan-May 2025
				2024	2025	May-24 (y-o-y)	Apr-25 (m-o-m)	YTD
Total Trade	2,438.1	1,938.3	1,803.5	11,640.8	9,493.1	-26.0	-7.0	-18.4
Exports	1,421.3	1,167.1	1,027.9	7,063.5	5,809.5	-27.7	-11.9	-17.8
Imports	1,016.8	771.2	775.6	4,577.3	3,683.6	-23.7	0.6	-19.5
Trade Balance	404.5	395.9	252.3	2,486.2	2,125.9	-37.6	-36.3	-14.5

Notes *p = provisional*

m-o-m = month on month

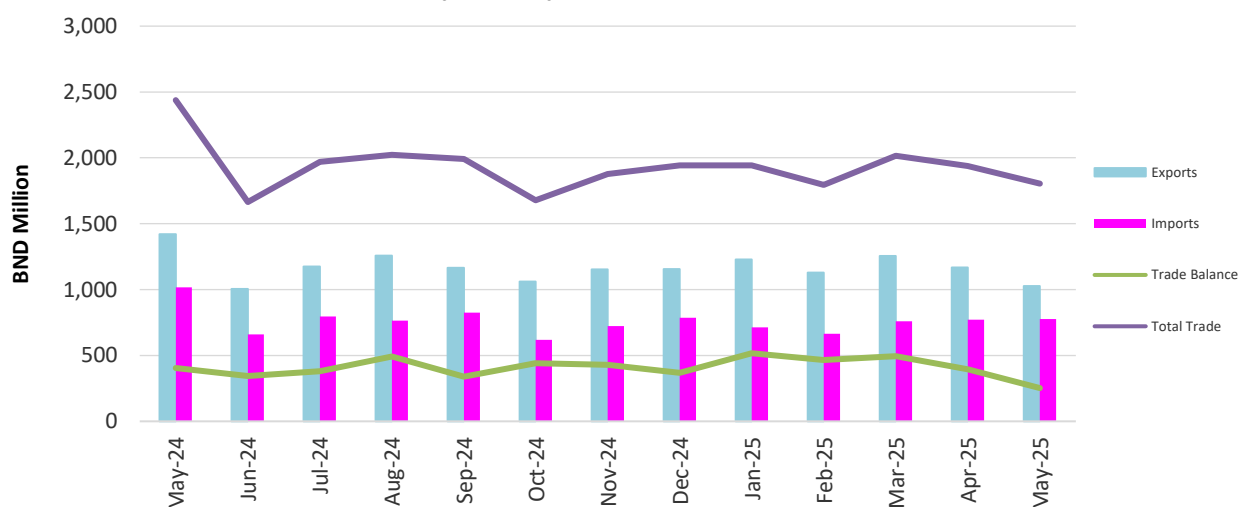
Total Trade = Exports + Imports

y-o-y = year on year

Trade Balance = Exports – Import

YTD = Year to date

Chart 1: Exports, Imports, Total Trade and Trade Balance



Merchandise Exports

Exports by Commodity Section

On a year-on-year basis, the merchandise exports declined by 27.7 per cent to BND1,027.9 million in May 2025 from BND1,421.3 million in May 2024. Mineral Fuels accounted for the highest share of total exports at 70.9 per cent (BND728.8 million), followed by Chemicals at 26.1 per cent (BND267.8 million) and Machinery and Transport Equipment at 1.0 per cent (BND10.7 million).

Meanwhile, on a month-on-month basis, the merchandise exports also decreased by 11.9 per cent from BND1,167.1 million in April 2025 to BND1,027.9 million in May 2025.

Table 2: Exports by Commodity Sections

Section	Value (BND Million)			Change (%)		Contribution (%)
	May-24	Apr-25	May-25 ^p	May-25 ^p	May-25 ^p	
				May-24 (y-o-y)	Apr-25 (m-o-m)	May-25
Food	1.3	2.0	1.9	46.2	-5.0	0.2
Beverages and Tobacco	0.0	0.0	0.0	0.0	0.0	0.0
Crude Materials Inedible	1.2	3.1	2.8	133.3	-9.7	0.3
Mineral Fuels	1,100.7	870.9	728.8	-33.8	-16.3	70.9
Animal And Vegetable Oils and Fats	0.0	0.0	0.1	0.0	0.0	0.0
Chemicals	297.1	270.9	267.8	-9.9	-1.1	26.1
Manufactured Goods	4.8	7.4	10.7	122.9	44.6	1.0
Machinery and Transport Equipment	11.0	8.3	10.4	-5.5	25.3	1.0
Miscellaneous Manufactured Articles	3.5	0.8	3.1	-11.4	287.5	0.3
Miscellaneous Transactions	1.6	3.7	2.2	37.5	-40.5	0.2
TOTAL	1,421.3	1,167.1	1,027.9	-27.7	-11.9	100.0

Notes: *p* = provisional

y-o-y = year-on-year

m-o-m = month-on-month

Main Exports

On a year-on-year basis, the main exports decreased by 28.7 per cent in May 2025, mainly due to decreases in both exports of Mineral Fuels by 33.8 per cent and Chemicals by 9.8 per cent.

In May 2025, the decrease in exports of Mineral Fuels was driven by a 44.1 per cent fall in the exports of Other Petroleum Products, from BND540.7 million in May 2024 to BND302.3 million (May 2025). Furthermore, the exports of Crude Oil and LNG decreased by 30.6 per cent and 21.3 per cent respectively. However, the exports of Other Gas Products increased by 4.1 per cent from BND39.2 million in May 2024 to BND40.8 million in May 2025.

The exports of Chemicals decreased by 9.8 per cent, led by a 14.7 per cent reduction in Chemicals and Related Products from BND280.9 million to BND239.5 million. Meanwhile, the exports of Methanol increased by 83.7 per cent from BND14.7 million in May 2024 to BND27.0 million in May 2025.

On a month-on-month basis, the main domestic exports also recorded a decrease of 12.7 per cent in May 2025. This was due to a decrease in both exports of Mineral Fuels and Chemicals by 16.3 per cent and 1.1 per cent respectively.

Table 3: Main Exports

	Value (BND Million)			Change %	
	May-24	Apr-25	May-25 ^p	May-25 ^p	May-25 ^p
				May-24 (y-o-y)	Apr-25 (m-o-m)
Exports	1,421.3	1,167.1	1,027.9	-27.7	-11.9
<i>Of which</i>					
Main Exports	1,396.3	1,140.3	995.2	-28.7	-12.7
Mineral Fuels	1,100.7	870.8	728.7	-33.8	-16.3
Crude Oil:					
Value (BND Million)	260.8	226.0	181.1	-30.6	-19.9
Volume (kbbl/day)	71.93	79.65	66.74	-7.2	-16.2
Price (USD/bbl)	86.25	71.21	67.48	-21.8	-5.2
Liquefied Natural Gas:					
Value (BND Million)	260.0	241.0	204.5	-21.3	-15.1
Volume (MMBtu/day)	640,025	690,796	545,419	-14.8	-21.0
Price (USD/MMBtu)	9.69	8.76	9.33	-3.8	6.4
Other Petroleum Products:					
Value (BND Million)	540.7	365.2	302.3	-44.1	-17.2
Other Gas Products:					
Value (BND Million)	39.2	38.6	40.8	4.1	5.7
Chemicals	295.6	269.5	266.5	-9.8	-1.1
Methanol:					
Value (BND Million)	14.7	17.3	27.0	83.7	56.1
Chemicals and Related Products:					
Value (BND Million)	280.9	252.2	239.5	-14.7	-5.0

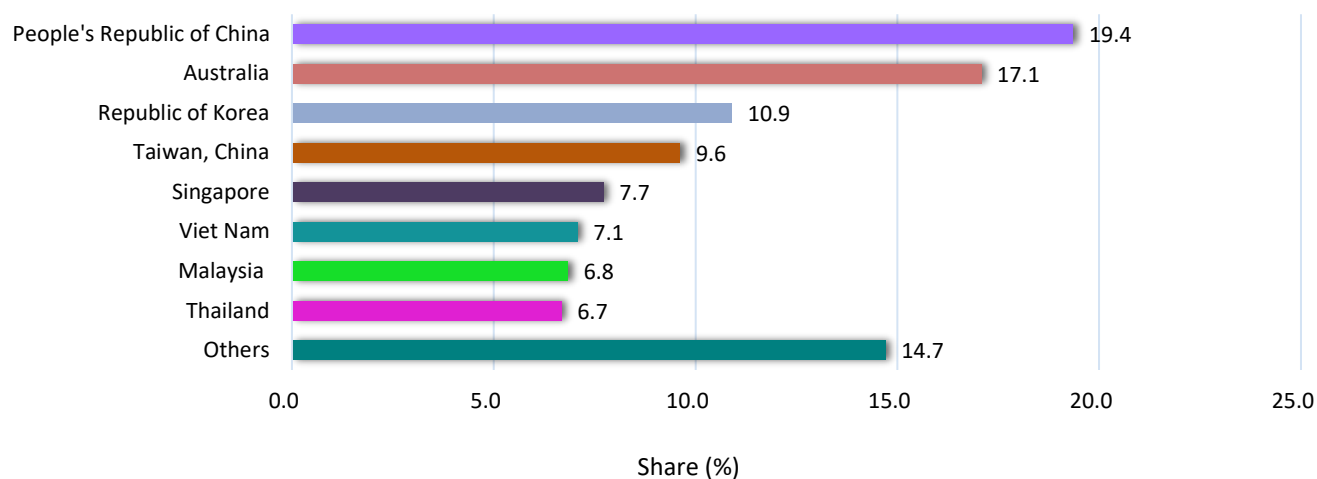
Source: Royal Brunei Customs and Excise Department, MOFE and Department of Energy, PMO

Notes *p* = provisional *y-o-y* = year on year *m-o-m* = month on month
 kbbl = thousand barrels *MMBtu* = million metric British thermal units

Exports by Trading Partners

The highest share of exports in May 2025 went to People's Republic of China with a share of 19.4 per cent, followed by Australia at 17.1 per cent and Republic of Korea at 10.9 per cent.

Chart 2: Share of Exports by Trading Partners



Merchandise Imports

Imports by Commodity Section

In May 2025, merchandise imports declined by 23.7 per cent to BND775.6 million compared to BND1,016.8 million in May 2024. Mineral Fuels recorded the highest share of total imports at 68.9 per cent (BND534.5 million) followed by Machinery and Transport Equipment (BND75.3 million) and Food (BND61.8 million).

Meanwhile, on a month-on-month basis, total imports recorded an increase of 0.6 per cent, mainly attributed to the increase in the imports value of Chemicals by 39.7 per cent. Followed by imports of Miscellaneous Manufactured Articles and Mineral Fuels.

Table 4: Imports by Commodity Sections

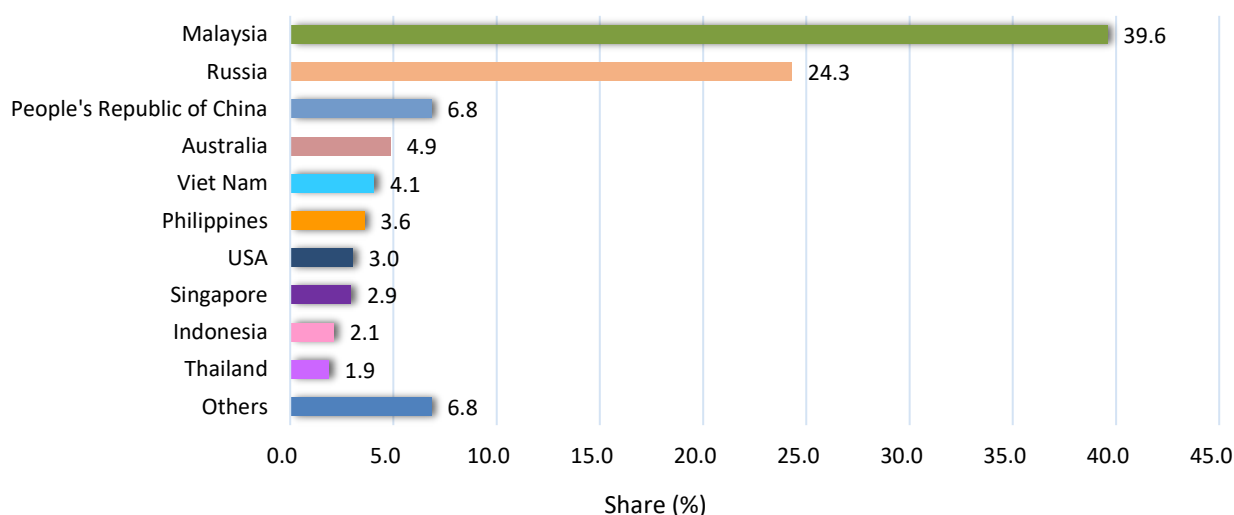
Section	Value (BND Million)			Change (%)		Contribution (%) May-25
	May-24	Apr-25	May-25 ^p	May-25 ^p	May-25 ^p	
				May-24 (y-o-y)	Apr-25 (m-o-m)	
Food	64.1	65.3	61.8	-3.6	-5.4	8.0
Beverages and Tobacco	2.9	4.3	3.1	6.9	-27.9	0.4
Crude Materials Inedible	1.8	2.6	1.4	-22.2	-46.2	0.2
Mineral Fuels	767.8	506.7	534.5	-30.4	5.5	68.9
Animal And Vegetable Oils and Fats	1.9	2.6	2.7	42.1	3.8	0.3
Chemicals	30.4	29.1	39.7	30.6	36.4	5.1
Manufactured Goods	38.8	47.4	33.7	-13.1	-28.9	4.3
Machinery and Transport Equipment	84.1	92.1	75.3	-10.5	-18.2	9.7
Miscellaneous Manufactured Articles	23.8	20.1	23.0	-3.4	14.4	3.0
Miscellaneous Transactions	1.1	0.9	0.3	-72.7	-66.7	0.1
TOTAL	1,016.8	771.2	775.6	-23.7	0.6	100.0

Notes: *p* = provisional *y-o-y* = year-on-year *m-o-m* = month-on-month

Imports by Trading Partners

The highest share of imports in May 2025 came from Malaysia, accounting for 39.6 per cent, followed by Russia (24.3 per cent) and People's Republic of China (6.8 per cent).

Chart 3: Share of Imports by Trading Partners



Imports by End-Use Categories

In May 2025, the import of Intermediate Goods was valued at BND450.4 million, accounting for 58.1 per cent of total imports. This was followed by Capital Goods (BND299.8 million or 38.7 per cent of total imports) and Consumption Goods (BND25.4 million or 3.2 per cent of total imports).

Chart 4: Share (%) of Imports by End Use Categories, May 2025

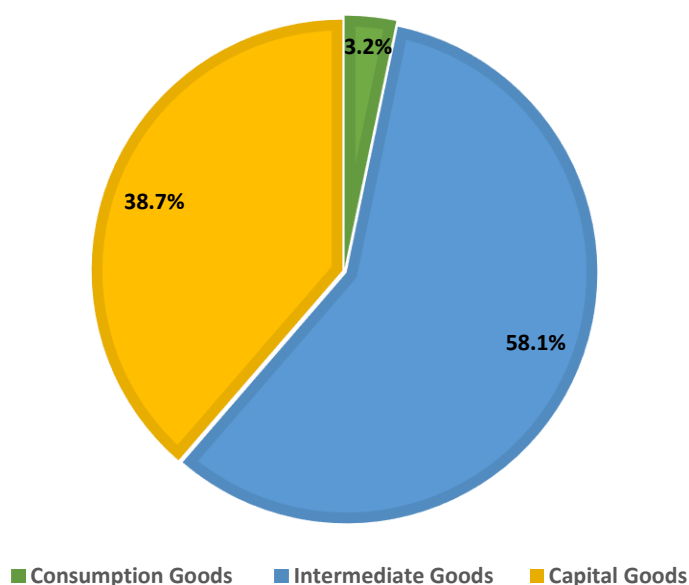


Table 5: Main Contribution to Imports by End Use Categories

Description	Value (BND Million)			Share (%)		
	May-24	Apr-25	May-25 ^p	May-24	Apr-25	May-25 ^p
Capital Goods	361.3	295.5	299.8	35.5	38.3	38.7
Mineral Fuels	283.7	212.0	224.4	27.9	27.5	28.9
Machinery and Transport Equipment	37.8	41.5	33.9	3.7	5.4	4.4
Chemicals	13.7	13.1	17.9	1.3	1.7	2.3
Others	26.1	28.9	23.6	2.6	3.7	3.1
Intermediate Goods	628.2	448.0	450.4	61.8	58.1	58.1
Mineral Fuels	483.9	294.6	310.0	47.6	38.2	40.0
Food	47.9	50.0	46.9	4.7	6.5	6.0
Machinery and Transport Equipment	42.9	47.0	38.4	4.2	6.1	5.0
Others	53.5	56.4	55.1	5.3	7.3	7.1
Consumption Goods	27.3	27.7	25.4	2.7	3.6	3.2
Food	16.2	15.3	15.0	1.6	2.0	1.9
Machinery and Transport Equipment	3.4	3.7	3.0	0.3	0.5	0.4
Miscellaneous Manufactured Articles	2.2	1.7	1.9	0.2	0.2	0.2
Others	5.5	7.0	5.5	0.6	0.9	0.7
Total	1,016.8	771.2	775.6	100.0	100.0	100.0

Notes: p = provisional Figures may not tally due to rounding.

Main Mode of Transport

The main mode of transport for Brunei Darussalam's international merchandise trading is sea transport, followed by air and land.

In May 2025, the total value of goods transported by sea for both exports and imports was BND1,701.7 million. The relative share of sea transport accounted for 98.6 per cent of exports and 88.8 per cent of imports. Goods transported by air contributed about 1.2 per cent of goods exports and 7.7 per cent of goods imports, while cross-border trading via land recorded 0.2 per cent of exported goods and 3.5 per cent of imported goods.

Table 6: Exports and Imports by Mode of Transport

Mode of Transport	Value (BND Million)			Contribution (%)		
	May-24	Apr-25	May-25 ^p	May-24	Apr-25	May-25 ^p
Exports	1,421.3	1,167.1	1,027.9	100.0	100.0	100.0
Air	10.9	11.0	12.5	0.8	0.9	1.2
Sea	1,408.5	1,153.9	1,013.2	99.1	98.9	98.6
Land	1.8	2.2	2.2	0.1	0.2	0.2
Others	-	-	-	-	-	-
Imports	1,016.8	771.2	775.6	100.0	100.0	100.0
Air	52.2	46.0	59.7	5.1	6.0	7.7
Sea	936.6	698.8	688.5	92.1	90.6	88.8
Land	28.0	26.3	27.4	2.8	3.4	3.5
Others	0.1	0.0	0.0	0.0	0.0	0.0
Total	2,438.1	1,938.3	1,803.5	100.0	100.0	100.0
Air	63.1	57.0	72.2	2.6	2.9	4.0
Sea	2,345.1	1,852.8	1,701.7	96.2	95.6	94.4
Land	29.8	28.6	29.6	1.2	1.5	1.6
Others	0.1	0.0	0.0	0.0	0.0	0.0

Notes: *p* = provisional '–' = Nil

TECHNICAL NOTES

1. Introduction

The International Merchandise Trade Statistics (IMTS) are compiled on a monthly basis based on the imports and exports data submitted by the Royal Customs and Excise Department, Ministry of Finance and Economy through customs declarations, and the Department of Energy, Prime Minister's Office. The general system of recording IMTS adopted by Brunei Darussalam covers imports, domestic exports and re-exports that have been cleared through customs.

2. Coverage of Merchandise

All goods imported into or exported from Brunei Darussalam are included in the IMTS.

The following classes of goods are excluded:

- currency notes and coins in circulation;
- personal and household effects which do not incur any Brunei Darussalam customs duty and which are taken by passengers for their own use;
- stores and fuel supplied to Brunei ships and aircraft;
- articles on loan or rent, for example, equipment for oil surveys and experimental drilling, etc.;
- goods in transit;
- fish and other marine products landed from Brunei Darussalam fishing vessels direct from fishing grounds;
- goods imported and exported by or on behalf of diplomatic services; and
- goods imported by the armed forces.

3. Time of Recording

Brunei Darussalam uses the 'release date' as its time of recording, which provides the time/date that stipulated in source documents when goods enter or leave the economic territory.

4. Valuation

Imports are valued at CIF, that is, the value of goods at the frontier of the exporting trading partners plus the cost of insurance and freight and any other charges when sold for export to Brunei Darussalam. Custom duties are not included in the value of imports.

Exports are valued at FOB, that is, the value of goods to be purchased abroad up to the point where the goods are deposited on board the outgoing vessel, aircraft and/or vehicle. Goods on consignment are valued at the current import price for imports and the current export price for exports.

Goods are recorded at their market value. Values are reported in millions of Brunei dollars. Data reported in foreign currencies are converted into local currency at the prevailing market exchange rate on the date of permit clearance.

5. Commodity Classification

Commodity items reported are classified in accordance with the Brunei Darussalam Trade Classification and Customs Duties 2022. This classification incorporates the ASEAN Harmonized Tariff Nomenclature (AHTN), which is based on the 8-digits Harmonised Commodity Description and Coding System Nomenclature (H.S) developed by the World Customs Organisation (WCO).

For International comparability in this report, import and export are classified according to the United Nations Standard Trade Classification, Revision 4 (SITC Rev. 4).

The imports data can also be categorized according to their end-use categories, namely Capital, Intermediate or Consumption based on Brunei Darussalam's Broad Economic Categories (BDBEC), which is adapted from United Nation, the Fifth revision of Broad Economic Categories.

The BDBEC is classified in accordance with Broad Economic Category introduced by the United Nations and as a means for converting data compiled in terms of SITC into end-use categories.

The BDBEC provides categories which can be aligned into 3 classes of goods in the System of National Accounts (SNA):

- Capital Goods are used as a means of producing other goods or services.
- Intermediate Goods are semi-processed, semi-manufactured and industrial-supplies; and transformed or used up in the production of goods and services.
- Consumption Goods are final product mainly used by households for final consumption.

6. Mode of transport

Merchandise trade in goods by mode of transport are compiled according to the means of transport used when goods enter or leave the economic territory of the economy. The following classifications are the main categories of the mode of transport:

1. Air;
2. Sea;
3. Land; and
4. Others include postal consignments, mail or courier shipments and goods crossing the border not to attribute a transaction to any specific mode of transport categories.

The method of transport used for the carriage of goods is recorded as the mode of transport such as aircraft, vehicle, vessel and other type of transport of goods. The mode of transport for imports refers to the last mode of transport by which the cargo was transported to the port of clearance into the economy whereas, for exports the mode of transport information records the last mode of transport with which cargo crossed the customs border on its exit from the economy.

Appendix 1: Exports, Imports, Total Trade and Trade Balance

Period	Value (BND Million)					
	Exports			Imports	Total Trade	Trade Balance
	Total	Domestic Exports	Re-Exports			
2024	15,033.9	14,590.0	443.8	9,753.8	24,787.7	5,280.1
Q1	4,268.2	4,159.4	108.8	2,569.5	6,837.6	1,698.7
Q2	3,799.2	3,673.3	125.9	2,668.5	6,467.6	1,130.7
Q3	3,597.9	3,485.8	112.0	2,386.2	5,984.1	1,211.6
Q4	3,368.7	3,271.5	97.2	2,129.6	5,498.3	1,239.1
Jan	1,318.5	1,264.5	54.0	855.4	2,173.8	463.1
Feb	1,547.3	1,523.5	23.8	858.1	2,405.3	689.2
Mar	1,402.4	1,371.4	31.0	856.0	2,258.5	546.4
Apr	1,374.0	1,352.9	21.0	991.0	2,365.0	382.9
May	1,421.3	1,398.8	22.5	1,016.8	2,438.1	404.5
Jun	1,004.0	921.6	82.4	660.7	1,664.6	343.3
Jul	1,174.6	1,153.2	21.4	795.2	1,969.8	379.4
Aug	1,257.8	1,189.5	68.2	765.0	2,022.8	492.7
Sep	1,165.5	1,143.1	22.4	826.0	1,991.5	339.5
Oct	1,059.6	1,028.7	30.9	618.7	1,678.3	441.0
Nov	1,153.4	1,108.8	44.6	724.1	1,877.5	429.3
Dec	1,155.6	1,133.9	21.7	786.8	1,942.4	368.9
2025 (YTD)	5,809.5	5,671.8	137.7	3,683.6	9,493.1	2,125.9
Jan	1,229.5	1,210.2	19.2	712.6	1,942.1	516.9
Feb	1,130.0	1,077.2	52.8	664.2	1,794.2	465.8
Mar	1,255.0	1,231.3	23.7	760.0	2,015.0	495.0
Apr	1,167.1	1,148.0	19.1	771.2	1,938.3	395.9
May ^p	1,027.9	1,005.1	22.8	775.6	1,803.5	252.3

Notes:

Total Trade = Exports + Imports Trade Balance = Exports – Imports p = provisional YTD = Year to Date
 Figures may not tally due to rounding.

Appendix 2: Merchandise Exports by Commodity Section

IMTS May 2025

Period	Value (BND Million)										
	Total	Food	Beverages and Tobacco	Crude Materials Inedible	Mineral Fuels	Animal and Vegetable Oils and Fats	Chemicals	Manufactured Goods	Machinery and Transport Equipment	Miscellaneous Manufactured Articles	Miscellaneous Transactions
2024	15,033.9	15.0	0.1	18.4	11,349.3	0.6	3,222.8	80.8	299.3	33.3	14.4
Jan	1,318.5	1.5	0.0	1.6	985.1	0.0	277.9	5.6	43.0	2.5	1.3
Feb	1,547.3	0.6	0.0	1.7	1,201.8	0.1	322.4	4.6	12.6	3.1	0.4
Mar	1,402.4	0.7	0.0	2.3	1,086.6	0.1	283.8	8.4	17.3	2.8	0.4
Apr	1,374.0	1.3	0.0	1.1	1,013.7	0.0	332.4	8.4	14.2	1.4	1.3
May	1,421.3	1.3	0.0	1.2	1,100.7	0.0	297.1	4.8	11.0	3.5	1.6
Jun	1,004.0	1.2	0.0	1.2	717.4	0.0	207.9	2.7	69.6	2.4	1.5
Jul	1,174.6	1.2	0.0	1.1	927.2	0.1	224.4	3.5	12.9	3.0	1.3
Aug	1,257.8	1.0	0.0	1.2	950.6	0.0	236.9	3.6	60.6	2.6	1.3
Sep	1,165.5	0.7	0.0	1.5	878.5	0.1	263.2	6.4	11.6	2.6	0.9
Oct	1,059.6	1.5	0.0	1.8	735.0	0.1	292.2	4.1	20.0	2.6	2.3
Nov	1,153.4	1.9	0.0	1.8	913.0	0.1	193.6	25.0	13.4	3.1	1.5
Dec	1,155.6	2.2	0.0	1.9	839.7	0.1	290.9	3.7	13.1	3.4	0.6
2025 (YTD)	5,809.5	8.1	0.0	11.8	4,286.5	0.3	1,354.5	38.8	80.4	12.5	16.6
Jan	1,229.5	0.8	0.0	2.7	938.7	0.0	266.3	5.2	10.0	3.5	2.2
Feb	1,130.0	1.6	0.0	1.6	775.4	0.1	294.2	9.5	38.3	3.3	6.1
Mar	1,255.0	1.6	0.0	1.6	972.6	0.1	255.3	6.0	13.4	1.9	2.4
Apr	1,167.1	2.0	0.0	3.1	870.9	0.0	270.9	7.4	8.3	0.8	3.7
May ^p	1,027.9	1.9	0.0	2.8	728.8	0.1	267.8	10.7	10.4	3.1	2.2

Notes: *p* = provisional

YTD = Year to Date

Figures may not tally due to rounding.

Appendix 3: Merchandise Imports by Commodity Section

IMTS May 2025

Period	Value (BND Million)										
	Total	Food	Beverages and Tobacco	Crude Materials Inedible	Mineral Fuels	Animal and Vegetable Oils and Fats	Chemicals	Manufactured Goods	Machinery and Transport Equipment	Miscellaneous Manufactured Articles	Miscellaneous Transactions
2024	9,753.8	775.3	48.9	33.6	6,433.7	25.5	408.1	595.3	1,036.6	385.5	11.2
Jan	855.4	69.3	4.1	2.2	478.9	1.7	32.9	153.1	79.7	32.7	0.7
Feb	858.1	42.7	4.1	2.0	647.2	1.6	25.2	40.4	66.5	27.8	0.6
Mar	856.0	68.4	7.1	6.1	565.8	2.2	41.5	40.8	91.5	30.9	1.6
Apr	991.0	59.6	4.7	2.2	742.7	1.7	33.3	52.4	67.6	25.9	0.8
May	1,016.8	64.1	2.9	1.8	767.8	1.9	30.4	38.8	84.1	23.8	1.1
Jun	660.7	57.0	3.4	1.3	415.4	2.4	34.5	46.0	73.8	26.1	0.8
Jul	795.2	89.7	2.4	6.0	499.9	2.0	39.0	33.3	90.6	31.3	1.1
Aug	765.0	63.3	4.4	1.6	484.5	2.4	47.9	37.9	83.5	38.2	1.3
Sep	826.1	62.3	4.1	3.8	534.8	2.5	32.4	31.1	95.4	58.7	0.9
Oct	618.7	59.4	3.7	1.9	369.7	1.9	26.6	38.9	86.2	29.6	0.8
Nov	724.1	70.2	3.6	1.7	455.1	2.3	33.8	46.2	81.2	29.1	0.9
Dec	786.8	69.3	4.4	2.8	471.5	2.8	30.5	36.5	136.6	31.6	0.6
2025 (YTD)	3,683.6	309.9	21.0	11.7	2,487.4	12.0	163.1	188.2	363.0	124.1	3.2
Jan	712.6	67.5	4.0	3.8	463.8	2.6	38.0	65.5	65.5	26.6	0.5
Feb	664.2	51.2	3.9	1.2	469.4	1.5	26.7	58.6	58.6	23.1	0.8
Mar	760.0	64.0	5.7	2.6	513.0	2.6	29.5	39.0	71.5	31.3	0.6
Apr	771.2	65.3	4.3	2.6	506.7	2.6	29.1	47.4	92.1	20.1	0.9
May ^p	775.6	61.8	3.1	1.4	534.5	2.7	39.7	33.7	75.3	23.0	0.3

Notes: ^p = provisional

Figures may not tally due to rounding.

Appendix 4: Exports of Oil and Gas and Non-Oil and Gas Sector

Period	Exports	Value (BND Million)		Contribution (%)	
		Oil and Gas ⁽¹⁾ Sector	Non-Oil and ⁽²⁾ Gas Sector	Oil and Gas Sector	Non-Oil and Gas Sector
2024	15,033.9	6,008.4	9,025.5	40.0	60.0
Q1	4,268.2	1,732.9	2,535.3	40.6	59.4
Q2	3,799.2	1,447.4	2,351.7	38.1	61.9
Q3	3,597.9	1,579.5	2,018.4	43.9	56.1
Q4	3,368.7	1,248.6	2,120.1	37.1	62.9
Jan	1,318.5	530.9	787.5	40.0	60.0
Feb	1,547.3	668.5	878.7	43.2	59.7
Mar	1,402.4	533.4	869.0	38.0	56.8
Apr	1,374.0	519.4	854.5	37.8	62.0
May	1,421.3	520.8	900.5	36.6	62.2
Jun	1,004.0	407.2	596.8	40.6	63.4
Jul	1,174.6	514.0	660.5	43.8	59.4
Aug	1,257.8	589.6	668.2	46.9	56.2
Sept	1,165.5	475.9	689.6	40.8	59.2
Oct	1,059.6	349.5	710.2	33.0	67.0
Nov	1,153.4	471.3	682.1	40.9	59.1
Dec	1,155.6	427.8	727.8	37.0	63.0
2025 (YTD)	5,809.5	2,276.4	3,533.1	39.2	60.8
Jan	1,229.5	476.8	752.6	38.8	61.2
Feb	1,130.0	384.3	745.7	34.0	66.0
Mar	1,255.0	562.6	692.4	44.8	55.2
Apr	1,167.1	467.0	700.1	40.0	60.0
May ^p	1,027.9	385.6	642.3	37.5	62.5

Notes:

(1) – Includes Crude Oil and LNG

(2) – Includes Methanol and Other Petroleum and Gas Products

*p = provisional**Figures may not tally due to rounding.*

Appendix 5: Exports and Imports by Trading Partners

Trading Partners	Value (BND Million)			Change (%)	
	May-24	Apr-25	May-25 ^p	May-25 ^p	May-25 ^p
				May-24 (y-o-y)	Apr-24 (m-o-m)
Exports to Trading Partners					
People's Republic of China	272.4	168.2	198.9	-27.0	18.3
Australia	330.2	312.2	175.5	-46.9	-43.8
Republic of Korea	6.6	0.2	112.0	1,597.0	55,900.0
Taiwan, China	71.0	2.8	98.8	39.2	3,428.6
Singapore	171.6	103.6	79.3	-53.8	-23.5
Viet Nam	112.2	6.5	72.7	-35.2	1,018.5
Malaysia	64.7	48.8	70.2	-21.1	43.9
Thailand	86.9	188.2	68.6	8.5	-63.5
Others	305.7	336.6	151.9	-50.3	-54.9
Total	1,421.3	1,167.1	1,027.9	-27.7	-11.9
Imports from Trading Partners					
Malaysia	158.2	130.1	307.0	94.1	136.0
Russia	254.8	207.4	188.4	-26.1	-9.2
People's Republic of China	79.4	53.2	53.0	-33.2	-0.4
Australia	37.0	101.1	37.7	1.9	-62.7
Viet Nam	38.3	3.4	31.5	-17.8	826.5
Philippines	7.1	6.0	27.9	293.0	365.0
USA	21.8	16.8	23.5	7.8	39.9
Singapore	36.4	28.9	22.8	-37.4	-21.1
Indonesia	11.6	13.8	16.3	40.5	18.1
Thailand	10.7	10.0	14.5	35.5	45.0
Others	361.5	200.5	53.0	-85.3	-73.6
Total	1,016.8	771.2	775.6	-23.7	0.6

Notes: p = provisional y-o-y = year-on-year m-o-m = month-on-month
 Figures may not tally due to rounding.

Appendix 6: Imports by End Use Categories

Period	Value (BND Million)			
	Imports	Capital	Intermediate	Consumption
2024	9,753.9	3,431.2	5,930.0	392.6
Q1	2,569.5	864.8	1,581.3	123.3
Q2	2,668.5	941.1	1,649.0	78.4
Q3	2,386.2	845.5	1,438.2	102.5
Q4	2,129.6	779.8	1,261.2	88.4
Jan	855.4	249.1	538.4	67.9
Feb	858.1	304.4	532.0	21.6
Mar	856.0	311.3	510.9	33.8
Apr	991.0	341.9	623.1	26.0
May	1,016.8	361.3	628.2	27.3
Jun	660.7	237.9	397.7	25.1
Jul	795.2	283.4	477.0	34.8
Aug	765.0	285.4	450.6	29.0
Sep	826.1	276.7	510.6	38.7
Oct	618.7	235.5	356.6	26.7
Nov	724.1	271.5	424.0	28.6
Dec	786.8	272.8	480.9	33.1
2025 (YTD)	3,683.6	1,360.3	2,190.1	133.2
Jan	712.6	254.0	427.6	31.0
Feb	644.2	230.7	411.7	21.8
Mar	760.0	280.3	452.4	27.3
Apr	771.2	295.5	448.0	27.7
May ^p	775.6	299.8	450.4	25.4

Notes: *p* = provisional YTD = Year to Date

Figures may not tally due to rounding.

Appendix 7: Merchandise Goods by Mode of Transport

Period	Value (BND Million)							
	Exports				Imports			
	Air	Sea	Land	Others	Air	Sea	Land	Others
2024	205.9	14,798.9	29.1	0.0	733.4	8,680.6	339.6	0.2
Q1	57.6	4,205.2	5.4	-	187.3	2,305.4	76.7	0.1
Q2	84.5	3,703.5	11.2	0.0	154.3	2,434.5	79.5	0.0
Q3	30.8	3,562.0	5.1	-	191.6	2,100.3	94.4	0.0
Q4	33.1	3,328.2	7.5	-	200.2	1,840.3	89.0	0.0
2024 (YTD)	205.9	14,798.9	29.1	0.0	733.4	8,680.6	339.6	0.2
Jan	35.8	1,280.5	2.2	-	57.4	765.6	32.3	0.1
Feb	10.9	1,535.0	1.4	-	52.4	793.1	12.6	-
Mar	10.9	1,389.8	1.8	-	77.5	746.7	31.8	0.0
Apr	8.4	1,364.2	1.4	-	48.9	915.4	26.7	0.1
May	10.9	1,408.5	1.8	-	52.2	936.6	28.0	0.1
Jun	65.2	930.8	8.0	0.0	53.2	582.6	24.9	0.0
Jul	12.0	1,160.3	2.3	-	77.9	687.9	29.4	0.0
Aug	10.1	1,246.7	1.0	-	58.1	677.9	29.0	0.0
Sep	8.7	1,155.1	1.8	-	55.5	734.5	36.0	0.0
Oct	11.7	1,046.1	1.8	-	55.9	535.7	27.0	0.0
Nov	11.2	1,139.5	2.7	-	55.1	641.6	27.4	0.0
Dec	10.1	1,142.6	2.9	-	89.2	663.0	34.6	0.0
2025 (YTD)	85.0	5,715.0	9.4	-	254.8	3,294.4	134.3	0.0
Jan	9.0	1,218.9	1.6	-	55.8	630.1	26.6	0.0
Feb	41.1	1,087.1	1.8	-	45.6	592.6	26.0	0.0
Mar	11.5	1,241.9	1.6	-	47.7	684.3	28.0	-
Apr	11.0	1,153.9	2.2	-	46.0	698.8	26.3	0.0
May ^p	12.5	1,013.2	2.2	-	59.7	688.5	27.4	0.0

Notes: p = provisional '–' = Nil

Figures may not tally due to rounding.