



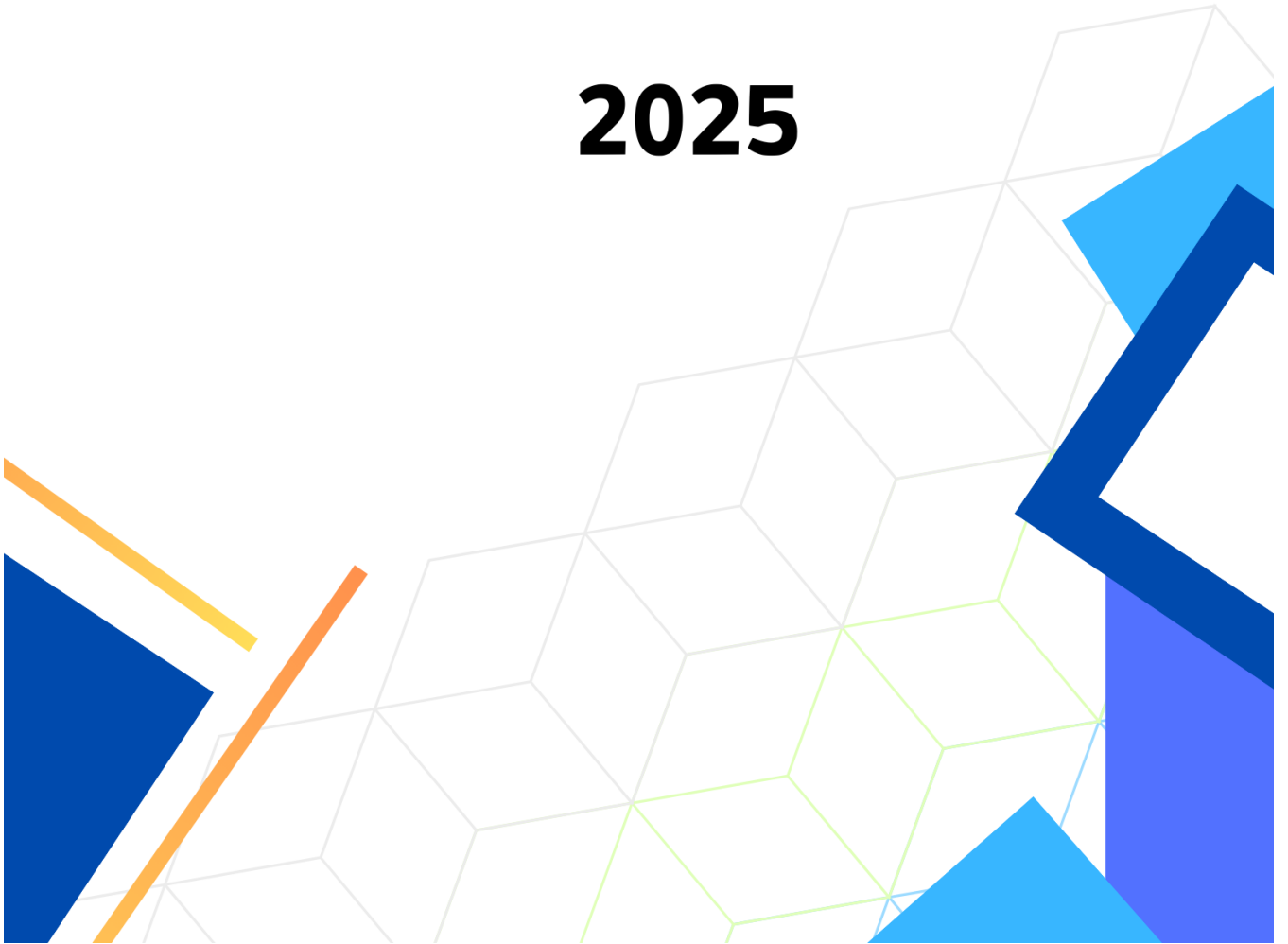
جباتن فرانچغن ايكونومي دان ستاتيسٲك

DEPARTMENT OF ECONOMIC PLANNING AND STATISTICS
MINISTRY OF FINANCE AND ECONOMY
BRUNEI DARUSSALAM

INTERNATIONAL MERCHANDISE TRADE STATISTICS

MARCH

2025





Website: deps.mofe.gov.bn
 Email: info.statistics@jpes.gov.bn
 Instagram: @statistics.jpes

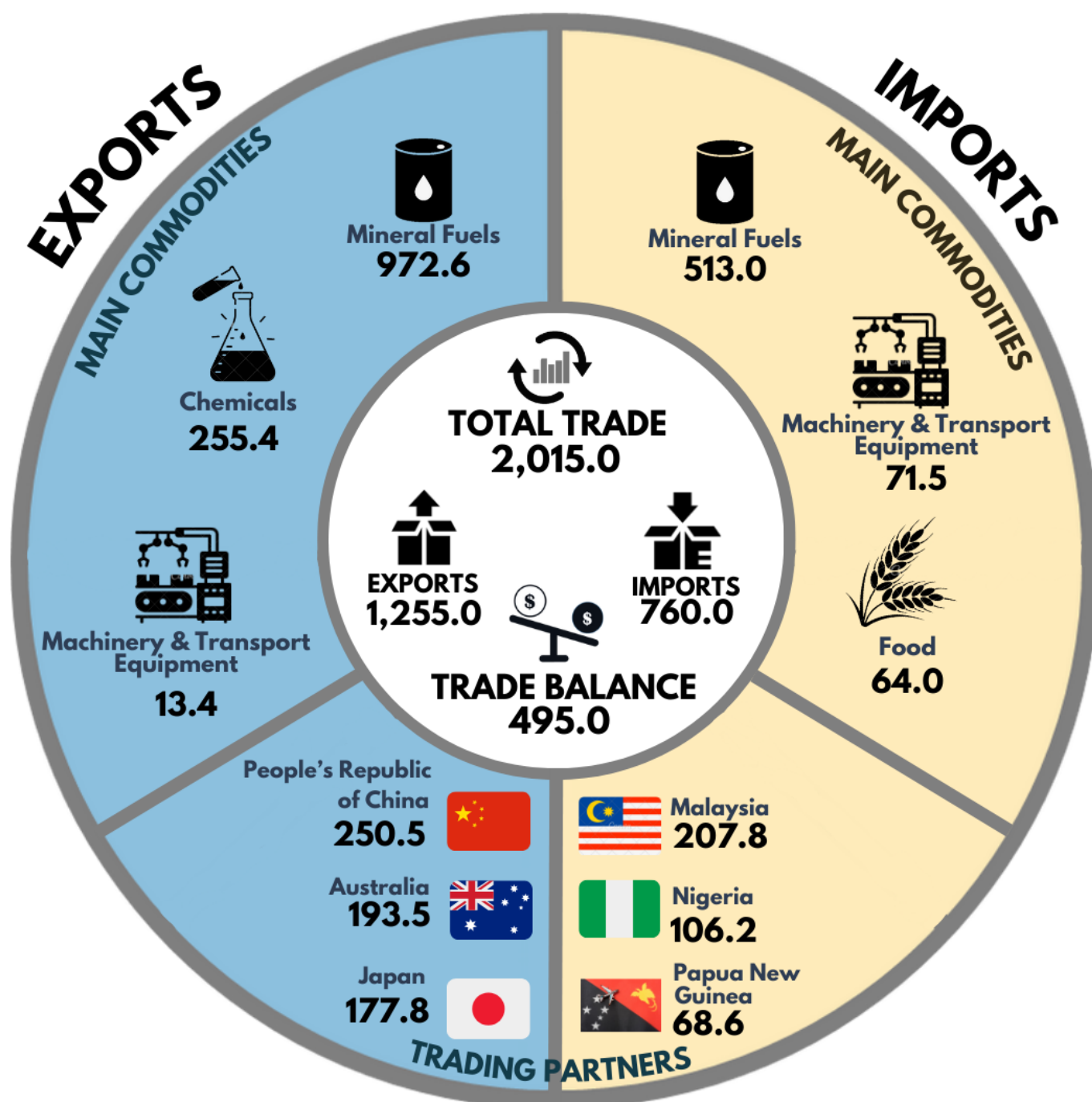


جباتن فرانشن ايكونومي دان ستاتيستيك
 DEPARTMENT OF ECONOMIC PLANNING AND STATISTICS
 MINISTRY OF FINANCE AND ECONOMY
 BRUNEI DARUSSALAM

INTERNATIONAL MERCHANDISE TRADE STATISTICS

MARCH 2025

BND Million



INTERNATIONAL MERCHANDISE TRADE STATISTICS (IMTS) MARCH 2025

Highlights

Year-on-Year Change

Total trade for March 2025 was BND2,015.0 million, comprising exports of BND1,255.0 million and imports of BND760.0 million. This reflected a year-on-year decrease of 10.8 per cent from BND2,258.4 million in March 2024.

Furthermore, the trade balance declined by 9.4 per cent to BND495.0 million (March 2025) from BND546.4 million in March 2024.

Month-on-Month Change

On a month-on-month basis, total trade rose by 12.3 per cent, increasing from BND1,794.2 million in February 2025 to BND2,015.0 million in March 2025.

Table 1: Exports, Imports and Trade Balance

	Value (BND Million)					Change (%)		
	Mar-24	Feb-25	Mar-25 ^p	Jan-Mar	Jan-Mar ^p	Mar-25 ^p	Mar-25 ^p	Jan-Mar 2025
				2024	2025	Mar-24 (y-o-y)	Feb-25 (m-o-m)	YTD
Total Trade	2,258.4	1,794.2	2,015.0	6,837.7	5,751.3	-10.8	12.3	-15.9
Exports	1,402.4	1,130.0	1,255.0	4,268.2	3,614.5	-10.5	11.1	-15.3
Imports	856.0	664.2	760.0	2,569.5	2,136.8	-11.2	14.4	-16.8
Trade Balance	546.4	465.8	495.0	1,698.7	1,477.7	-9.4	6.3	-13.0

Notes *p = provisional*

m-o-m = month on month

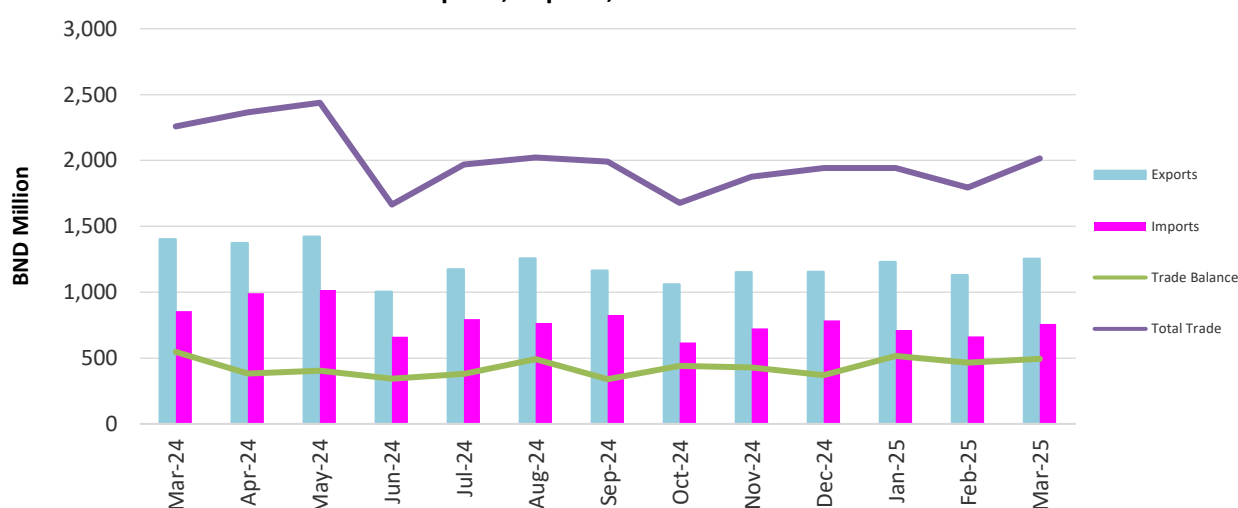
Total Trade = Exports + Imports

y-o-y = year on year

Trade Balance = Exports – Import

YTD = Year to date

Chart 1: Exports, Imports, Total Trade and Trade Balance



Merchandise Exports

Exports by Commodity Section

On a year-on-year basis, the merchandise exports decreased by 10.5 per cent to BND1,255.0 million in March 2025 from BND1,402.4 million in March 2024. Mineral Fuels accounted the highest share of total exports at 77.5 per cent (BND972.6 million), followed by Chemicals at 20.3 per cent (BND255.3 million) and Machinery and Transport Equipment at 1.1 per cent (BND13.4 million).

Meanwhile, on a month-on-month basis, the merchandise exports increased by 11.1 per cent from BND1,130.0 million in February 2025 to BND1,255.0 million in March 2025.

Table 2: Exports by Commodity Sections

Section	Value (BND Million)			Change (%)		Contribution (%)
	Mar-24	Feb-25	Mar-25 ^p	Mar-25 ^p	Mar-25 ^p	
				Mar-24 (y-o-y)	Feb-25 (m-o-m)	Mar-25
Food	0.7	1.6	1.6	128.6	0.0	0.1
Beverages and Tobacco	0.0	0.0	0.0	0.0	0.0	0.0
Crude Materials Inedible	2.3	1.6	1.6	-30.4	0.0	0.1
Mineral Fuels	1,086.6	775.4	972.6	-10.5	25.4	77.5
Animal And Vegetable Oils and Fats	0.1	0.1	0.1	0.0	0.0	0.0
Chemicals	283.8	294.2	255.3	-10.0	-13.2	20.3
Manufactured Goods	8.4	9.5	6.0	-28.6	-36.8	0.5
Machinery and Transport Equipment	17.3	38.3	13.4	-22.5	-65.0	1.1
Miscellaneous Manufactured Articles	2.8	3.3	1.9	-32.1	-42.4	0.2
Miscellaneous Transactions	0.4	6.1	2.4	500.0	-60.7	0.2
TOTAL	1,402.4	1,130.0	1,255.0	-10.5	11.1	100.0

Notes: *p* = provisional *y-o-y* = year-on-year *m-o-m* = month-on-month

Main Domestic Exports

On a year-on-year basis, the main domestic exports decreased by 10.4 per cent in March 2025, mainly due to decreases in both exports of Mineral Fuels and Chemicals by 10.5 per cent and 10.2 per cent respectively.

In March 2025, the decrease in exports of Mineral Fuels was driven by a 26.9 per cent fall in the exports of Other Petroleum Products, from BND504.0 million in March 2024 to BND368.4 million (March 2025). Furthermore, the exports of Other Gas Products and LNG also decreased by 15.4 per cent and 9.9 per cent respectively. However, the exports of Crude Oil increased by 27.3 per cent from BND220.5 million in March 2024 to BND280.8 million in March 2025.

The exports of Chemicals decreased by 10.2 per cent, led by 11.2 per cent reduction in Chemicals and Related Products from BND275.3 million to BND236.0 million. Meanwhile, the exports of Methanol grew by 5.2 per cent from BND17.3 million in March 2024 to BND18.2 million in March 2025.

On a month-on-month basis, the main domestic exports recorded an increase of 14.8 per cent in March 2025. This was due to an increase in the exports of Mineral Fuels by 25.5 per cent, despite the exports of Chemicals fell by 13.3 per cent.

Table 3: Main Domestic Exports

	Value (BND Million)			Change %	
	Mar-24	Feb-25	Mar-25 ^P	Mar-25 ^P	Mar-25 ^P
				Mar-24 (y-o-y)	Feb-25 (m-o-m)
Exports	1,402.4	1,130.0	1,255.0	-10.5	11.1
<i>Of which</i>					
Main Domestic Exports	1,369.7	1,068.5	1,226.9	-10.4	14.8
Mineral Fuels	1,086.6	775.3	972.7	-10.5	25.5
Crude Oil:					
Value (BND Million)	220.5	131.8	280.8	27.3	113.1
Volume (kkbl/day)	58.86	44.73	88.76	50.8	98.4
Price (USD/bbl)	90.02	78.32	76.28	-15.3	-2.6
Liquefied Natural Gas:					
Value (BND Million)	312.9	252.5	281.9	-9.9	11.6
Volume (MMBtu/day)	777,245	734,194	664,109	-14.6	-9.5
Price (USD/MMBtu)	6.68	9.14	10.25	53.5	12.1
Other Petroleum Products:					
Value (BND Million)	504.0	349.5	368.4	-26.9	5.4
Other Gas Products:					
Value (BND Million)	49.2	41.5	41.6	-15.4	0.2
Chemicals	283.1	293.2	254.2	-10.2	-13.3
Methanol:					
Value (BND Million)	17.3	17.9	18.2	5.2	1.7
Chemicals and Related Products:					
Value (BND Million)	265.8	275.3	236.0	-11.2	-14.3

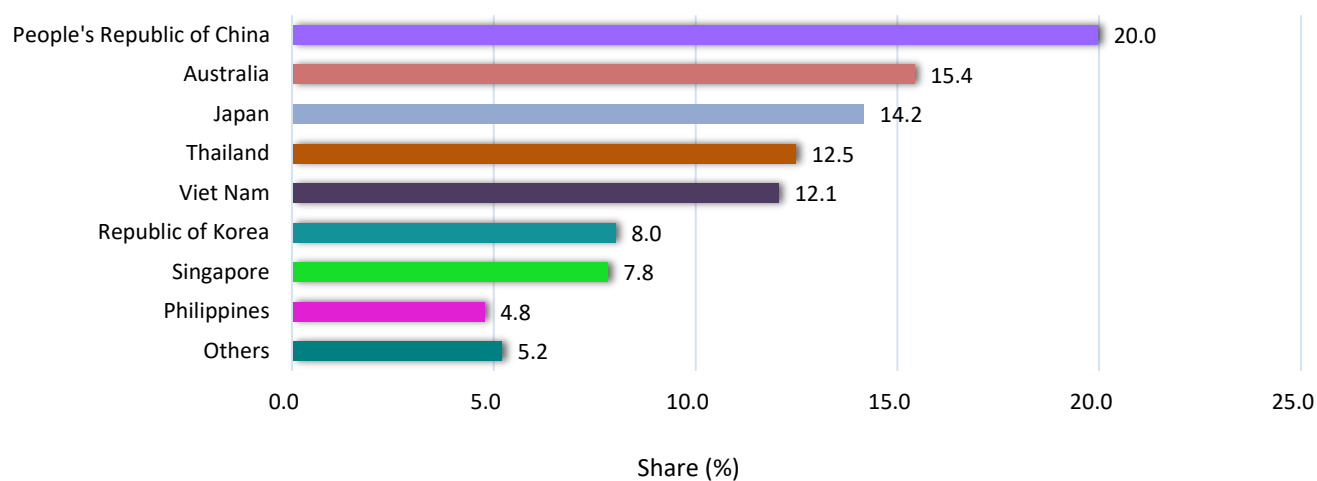
Source: Royal Brunei Customs and Excise Department, Ministry of Finance and Economy and Department of Energy, Prime Minister's Office

Notes *p* = provisional *y-o-y* = year on year *m-o-m* = month on month
 kkbl = thousand barrels *MMBtu* = million metric British thermal units

Exports by Trading Partners

The highest share of exports in March 2025 went to the People's Republic of China with a share of 20.0 per cent, followed by Australia at 15.4 per cent and Japan at 14.2 per cent.

Chart 2: Share of Exports by Trading Partners



Merchandise Imports

Imports by Commodity Section

In March 2025, merchandise imports declined by 11.2 per cent to BND760.0 million compared to BND856.0 million in March 2024. Mineral Fuels recorded the highest share of total imports at 67.5 per cent (BND513.0 million) followed by Machinery and Transport Equipment (BND71.5 million) and Food (BND64.0 million).

Meanwhile, on a month-on-month basis, total imports recorded an increase of 14.4 per cent, mainly attributed to the increase in the imports value of most commodity sections except imports of Miscellaneous transactions.

Table 4: Imports by Commodity Sections

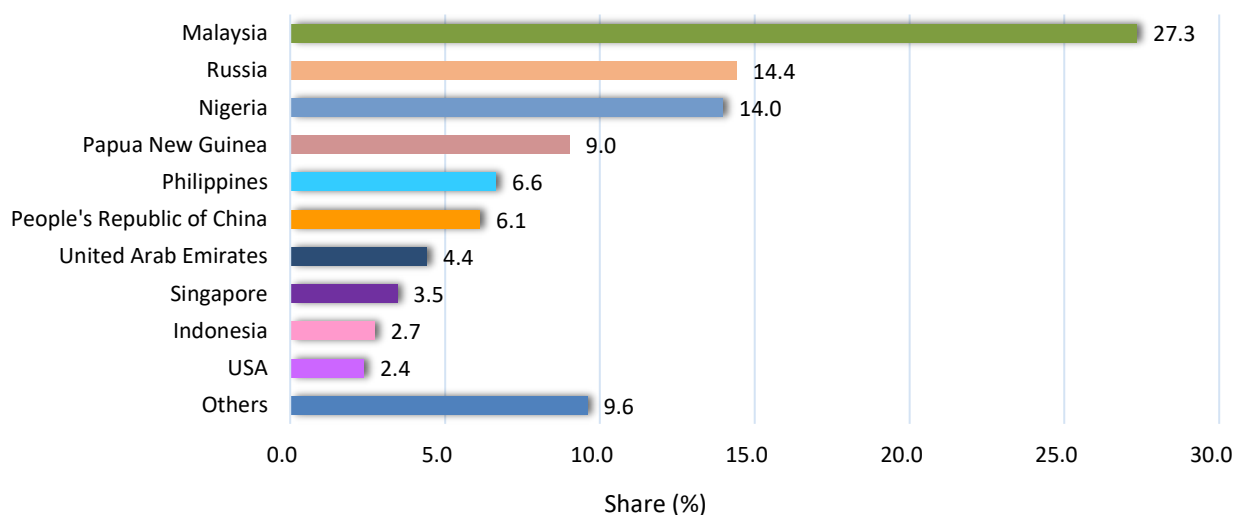
Section	Value (BND Million)			Change (%)		Contribution (%) Mar-25
	Mar-24	Feb-25	Mar-25 ^p	Mar-25 ^p	Mar-25 ^p	
				Mar-24 (y-o-y)	Feb-25 (m-o-m)	
Food	68.4	51.2	64.0	-6.4	25.0	8.4
Beverages and Tobacco	7.1	3.9	5.7	-19.7	46.2	0.8
Crude Materials Inedible	6.1	1.2	2.6	-57.4	116.7	0.3
Mineral Fuels	565.8	469.4	513.0	-9.3	9.3	67.5
Animal And Vegetable Oils and Fats	2.2	1.5	2.6	18.2	73.3	0.3
Chemicals	41.5	26.7	29.5	-28.9	10.5	3.9
Manufactured Goods	40.8	27.8	39.0	-4.4	40.3	5.6
Machinery and Transport Equipment	91.5	58.6	71.5	-21.9	22.0	9.4
Miscellaneous Manufactured Articles	30.9	23.1	31.3	1.3	35.5	4.1
Miscellaneous Transactions	1.6	0.8	0.6	-62.5	-25.0	0.1
TOTAL	856.0	664.2	760.0	-11.2	14.4	100.0

Notes: *p* = provisional *y-o-y* = year-on-year *m-o-m* = month-on-month

Imports by Trading Partners

The highest share of imports in March 2025 came from Malaysia, accounting for 27.3 per cent, followed by Russia (14.4 per cent) and Nigeria (14.0 per cent).

Chart 3: Share of Imports by Trading Partners



Imports by End-Use Categories

In March 2025, the import of Intermediate Goods was valued at BND452.4 million, accounting for 59.5 per cent of total imports. This was followed by Capital Goods (BND280.3 million or 36.9 per cent of total imports); and Consumption Goods (BND27.3 million or 3.6 per cent of total imports).

Chart 4: Share (%) of Imports by End Use Categories, March 2025

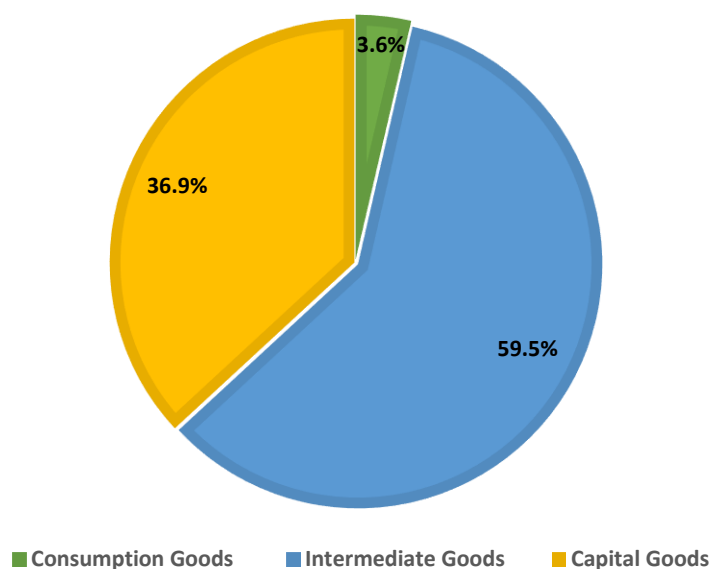


Table 5: Main Contribution to Imports by End Use Categories

Description	Value (BND Million)			Share (%)		
	Mar-24	Feb-25	Mar-25 ^p	Mar-24	Feb-25	Mar-25 ^p
Capital Goods	311.3	230.7	280.3	36.4	34.7	36.9
Mineral Fuels	222.8	172.1	205.9	26.0	25.9	27.1
Machinery and Transport Equipment	41.2	26.4	32.2	4.8	4.0	4.2
Manufactured Goods	17.3	11.6	16.8	2.0	1.7	2.2
Others	30.0	20.6	25.4	3.5	3.1	3.4
Intermediate Goods	510.9	411.7	452.4	59.7	62.0	59.5
Mineral Fuels	342.8	297.1	307.0	40.0	44.7	40.4
Food	52.3	39.0	49.2	6.1	5.9	6.5
Machinery and Transport Equipment	46.7	29.9	36.5	5.5	4.5	4.8
Others	69.1	45.7	59.7	8.1	6.9	7.8
Consumption Goods	33.8	21.8	27.3	3.9	3.3	3.6
Food	16.1	12.2	14.8	1.9	1.8	1.9
Miscellaneous Manufactured Articles	3.7	2.5	3.0	0.4	0.4	0.4
Machinery and Transport Equipment	3.7	2.3	2.9	0.4	0.4	0.4
Others	10.3	4.8	6.6	1.2	0.7	0.9
Total	856.0	664.2	760.0	100.0	100.0	100.0

Notes: ^p = provisional Figures may not tally due to rounding.

Main Mode of Transport

The main mode of transport for Brunei Darussalam's international merchandise trading is sea transport, followed by air and land.

In March 2025, the total value of goods transported by sea for both exports and imports was BND2,015.0 million. The relative share of sea transport accounted for 99.0 per cent of exports and 90.0 per cent of imports. Goods transported by air contributed about 0.9 per cent of goods exports and 6.3 per cent of goods imports, while cross-border trading via land recorded 0.1 per cent of exported goods and 3.7 per cent of imported goods.

Table 6: Exports and Imports by Mode of Transport

Mode of Transport	Value (BND Million)			Contribution (%)		
	Mar-24	Feb-25	Mar-25 ^p	Mar-24	Feb-25	Mar-25 ^p
Exports	1,402.4	1,130.0	1,255.0	100.0	100.0	100.0
Air	10.9	41.1	11.5	0.8	3.6	0.9
Sea	1,389.8	1,087.1	1,241.9	99.1	96.2	99.0
Land	1.8	1.8	1.6	0.1	0.2	0.1
Others	-	-	-	-	-	-
Imports	856.0	664.2	760.0	100.0	100.0	100.0
Air	77.5	45.6	47.7	9.1	6.9	6.3
Sea	746.7	592.6	684.3	87.2	89.2	90.0
Land	31.8	26.0	28.0	3.7	3.9	3.7
Others	0.0	0.0	-	0.0	0.0	-
Total	2,258.5	1,794.2	2,015.0	100.0	100.0	100.0
Air	88.4	86.7	59.1	3.9	4.8	2.9
Sea	2,136.5	1,679.7	1,926.2	94.6	93.6	95.6
Land	33.5	27.7	29.7	1.5	1.5	1.5
Others	0.0	0.0	-	0.0	0.0	-

Notes: p = provisional '-' = Nil

TECHNICAL NOTES

1. Introduction

The International Merchandise Trade Statistics (IMTS) are compiled on a monthly basis based on the imports and exports data submitted by the Royal Customs and Excise Department, Ministry of Finance and Economy through customs declarations, and the Department of Energy, Prime Minister's Office. The general system of recording IMTS adopted by Brunei Darussalam covers imports, domestic exports and re-exports that have been cleared through customs.

2. Coverage of Merchandise

All goods imported into or exported from Brunei Darussalam are included in the IMTS.

The following classes of goods are excluded:

- currency notes and coins in circulation;
- personal and household effects which do not incur any Brunei Darussalam customs duty and which are taken by passengers for their own use;
- stores and fuel supplied to Brunei ships and aircraft;
- articles on loan or rent, for example, equipment for oil surveys and experimental drilling, etc.;
- goods in transit;
- fish and other marine products landed from Brunei Darussalam fishing vessels direct from fishing grounds;
- goods imported and exported by or on behalf of diplomatic services; and
- goods imported by the armed forces.

3. Time of Recording

Brunei Darussalam uses the 'release date' as its time of recording, which provides the time/date that stipulated in source documents when goods enter or leave the economic territory.

4. Valuation

Imports are valued at CIF, that is, the value of goods at the frontier of the exporting trading partners plus the cost of insurance and freight and any other charges when sold for export to Brunei Darussalam. Custom duties are not included in the value of imports.

Exports are valued at FOB, that is, the value of goods to be purchased abroad up to the point where the goods are deposited on board the outgoing vessel, aircraft and/or vehicle. Goods on consignment are valued at the current import price for imports and the current export price for exports.

Goods are recorded at their market value. Values are reported in millions of Brunei dollars. Data reported in foreign currencies are converted into local currency at the prevailing market exchange rate on the date of permit clearance.

5. Commodity Classification

Commodity items reported are classified in accordance with the Brunei Darussalam Trade Classification and Customs Duties 2022. This classification incorporates the ASEAN Harmonized Tariff Nomenclature (AHTN), which is based on the 8-digits Harmonised Commodity Description and Coding System Nomenclature (H.S) developed by the World Customs Organisation (WCO).

For International comparability in this report, import and export are classified according to the United Nations Standard Trade Classification, Revision 4 (SITC Rev. 4).

The imports data can also be categorized according to their end-use categories, namely Capital, Intermediate or Consumption based on Brunei Darussalam's Broad Economic Categories (BDBEC), which is adapted from United Nation, the Fifth revision of Broad Economic Categories.

The BDBEC is classified in accordance with Broad Economic Category introduced by the United Nations and as a means for converting data compiled in terms of SITC into end-use categories.

The BDBEC provides categories which can be aligned into 3 classes of goods in the System of National Accounts (SNA):

- Capital Goods are used as a means of producing other goods or services.
- Intermediate Goods are semi-processed, semi-manufactured and industrial-supplies; and transformed or used up in the production of goods and services.
- Consumption Goods are final product mainly used by households for final consumption.

6. Mode of transport

Merchandise trade in goods by mode of transport are compiled according to the means of transport used when goods enter or leave the economic territory of the economy. The following classifications are the main categories of the mode of transport:

1. Air;
2. Sea;
3. Land; and
4. Others include postal consignments, mail or courier shipments and goods crossing the border not to attribute a transaction to any specific mode of transport categories.

The method of transport used for the carriage of goods is recorded as the mode of transport such as aircraft, vehicle, vessel and other type of transport of goods. The mode of transport for imports refers to the last mode of transport by which the cargo was transported to the port of clearance into the economy whereas, for exports the mode of transport information records the last mode of transport with which cargo crossed the customs border on its exit from the economy.

Appendix 1: Exports, Imports, Total Trade and Trade Balance

Period	Value (BND Million)					
	Exports			Imports	Total Trade	Trade Balance
	Total	Domestic Exports	Re-Exports			
2024	15,033.9	14,590.0	443.8	9,753.8	24,787.7	5,280.1
Q1	4,268.2	4,159.4	108.8	2,569.5	6,837.6	1,698.7
Q2	3,799.2	3,673.3	125.9	2,668.5	6,467.6	1,130.7
Q3	3,597.9	3,485.8	112.0	2,386.2	5,984.1	1,211.6
Q4	3,368.7	3,271.5	97.2	2,129.6	5,498.3	1,239.1
Jan	1,318.5	1,264.5	54.0	855.4	2,173.8	463.1
Feb	1,547.3	1,523.5	23.8	858.1	2,405.3	689.2
Mar	1,402.4	1,371.4	31.0	856.0	2,258.5	546.4
Apr	1,374.0	1,352.9	21.0	991.0	2,365.0	382.9
May	1,421.3	1,398.8	22.5	1,016.8	2,438.0	404.5
Jun	1,004.0	921.6	82.4	660.7	1,664.6	343.3
Jul	1,174.6	1,153.2	21.4	795.2	1,969.8	379.4
Aug	1,257.8	1,189.5	68.2	765.0	2,022.8	492.7
Sep	1,165.5	1,143.1	22.4	826.0	1,991.5	339.5
Oct	1,059.6	1,028.7	30.9	618.7	1,678.3	441.0
Nov	1,153.4	1,108.8	44.6	724.1	1,877.5	429.3
Dec	1,155.6	1,133.9	21.7	786.8	1,942.4	368.9
2025 (YTD)	3,614.5	3,518.7	95.7	2,136.7	5,751.2	1,477.7
Jan	1,229.5	1,210.2	19.2	712.6	1,942.1	516.9
Feb	1,130.0	1,077.2	52.8	664.2	1,794.2	465.8
Mar ^p	1,255.0	1,231.3	23.7	760.0	2,015.0	495.0

Notes:

Total Trade = Exports + Imports Trade Balance = Exports – Imports p = provisional YTD = Year to Date

Figures may not tally due to rounding.

Appendix 2: Merchandise Exports by Commodity Section

IMTS March 2025

Period											Value (BND Million)
	Total	Food	Beverages and Tobacco	Crude Materials Inedible	Mineral Fuels	Animal and Vegetable Oils and Fats	Chemicals	Manufactured Goods	Machinery and Transport Equipment	Miscellaneous Manufactured Articles	Miscellaneous Transactions
2024	15,033.9	15.0	0.1	18.4	11,349.3	0.6	3,222.8	80.8	299.3	33.3	14.4
Jan	1,318.5	1.5	0.0	1.6	985.1	0.0	277.9	5.6	43.0	2.5	1.3
Feb	1,547.3	0.6	0.0	1.7	1,201.8	0.1	322.4	4.6	12.6	3.1	0.4
Mar	1,402.4	0.7	0.0	2.3	1,086.6	0.1	283.8	8.4	17.3	2.8	0.4
Apr	1,374.0	1.3	0.0	1.1	1,013.7	0.0	332.4	8.4	14.2	1.4	1.3
May	1,421.3	1.3	0.0	1.2	1,100.7	0.0	297.1	4.8	11.0	3.5	1.6
Jun	1,004.0	1.2	0.0	1.2	717.4	0.0	207.9	2.7	69.6	2.4	1.5
Jul	1,174.6	1.2	0.0	1.1	927.2	0.1	224.4	3.5	12.9	3.0	1.3
Aug	1,257.8	1.0	0.0	1.2	950.6	0.0	236.9	3.6	60.6	2.6	1.3
Sep	1,165.5	0.7	0.0	1.5	878.5	0.1	263.2	6.4	11.6	2.6	0.9
Oct	1,059.6	1.5	0.0	1.8	735.0	0.1	292.2	4.1	20.0	2.6	2.3
Nov	1,153.4	1.9	0.0	1.8	913.0	0.1	193.6	25.0	13.4	3.1	1.5
Dec	1,155.6	2.2	0.0	1.9	839.7	0.1	290.9	3.7	13.1	3.4	0.6
2025 (YTD)	3,614.5	4.1	0.0	5.8	2,686.8	0.2	815.8	20.7	61.6	8.7	10.7
Jan	1,229.5	0.8	0.0	2.7	938.7	0.0	266.3	5.2	10.0	3.5	2.2
Feb	1,130.0	1.6	0.0	1.6	775.4	0.1	294.2	9.5	38.3	3.3	6.1
Mar ^p	1,255.0	1.6	0.0	1.6	972.6	0.1	255.3	6.0	13.4	1.9	2.4

Notes: p = provisional

YTD = Year to Date

Figures may not tally due to rounding.

Appendix 3: Merchandise Imports by Commodity Section

IMTS March 2025

Period											Value (BND Million)
	Total	Food	Beverages and Tobacco	Crude Materials Inedible	Mineral Fuels	Animal and Vegetable Oils and Fats	Chemicals	Manufactured Goods	Machinery and Transport Equipment	Miscellaneous Manufactured Articles	Miscellaneous Transactions
2024	9,753.8	775.3	48.9	33.6	6,433.7	25.5	408.1	595.3	1,036.6	385.5	11.2
Jan	855.4	69.3	4.1	2.2	478.9	1.7	32.9	153.1	79.7	32.7	0.7
Feb	858.1	42.7	4.1	2.0	647.2	1.6	25.2	40.4	66.5	27.8	0.6
Mar	856.0	68.4	7.1	6.1	565.8	2.2	41.5	40.8	91.5	30.9	1.6
Apr	991.0	59.6	4.7	2.2	742.7	1.7	33.3	52.4	67.6	25.9	0.8
May	1,016.8	64.1	2.9	1.8	767.8	1.9	30.4	38.8	84.1	23.8	1.1
Jun	660.7	57.0	3.4	1.3	415.4	2.4	34.5	46.0	73.8	26.1	0.8
Jul	795.2	89.7	2.4	6.0	499.9	2.0	39.0	33.3	90.6	31.3	1.1
Aug	765.0	63.3	4.4	1.6	484.5	2.4	47.9	37.9	83.5	38.2	1.3
Sep	826.1	62.3	4.1	3.8	534.8	2.5	32.4	31.1	95.4	58.7	0.9
Oct	618.7	59.4	3.7	1.9	369.7	1.9	26.6	38.9	86.2	29.6	0.8
Nov	724.1	70.2	3.6	1.7	455.1	2.3	33.8	46.2	81.2	29.1	0.9
Dec	786.8	69.3	4.4	2.8	471.5	2.8	30.5	36.5	136.6	31.6	0.6
2025 (YTD)	2,136.7	182.8	13.6	7.7	1,446.3	6.7	94.3	107.1	195.5	81.0	1.9
Jan	712.6	67.5	4.0	3.8	463.8	2.6	38.0	65.5	65.5	26.6	0.5
Feb	664.2	51.2	3.9	1.2	469.4	1.5	26.7	58.6	58.6	23.1	0.8
Mar ^p	760.0	64.0	5.7	2.6	513.0	2.6	29.5	71.5	71.5	31.3	0.6

Notes: p = provisional

Figures may not tally due to rounding.

Appendix 4: Exports of Oil and Gas and Non-Oil and Gas Sector

Period	Exports	Value (BND Million)		Contribution (%)	
		Oil and Gas ⁽¹⁾ Sector	Non-Oil and ⁽²⁾ Gas Sector	Oil and Gas Sector	Non-Oil and Gas Sector
2024	15,033.9	6,008.4	9,025.5	40.0	60.0
Q1	4,268.2	1,732.9	2,535.3	40.6	59.4
Q2	3,799.2	1,447.4	2,351.7	38.1	61.9
Q3	3,597.9	1,579.5	2,018.4	43.9	56.1
Q4	3,368.7	1,248.6	2,120.1	37.1	62.9
Jan	1,318.5	530.9	787.5	40.0	60.0
Feb	1,547.3	668.5	878.7	43.2	59.7
Mar	1,402.4	533.4	869.0	38.0	56.8
Apr	1,374.0	519.4	854.5	37.8	62.0
May	1,421.3	520.8	900.5	36.6	62.2
Jun	1,004.0	407.2	596.8	40.6	63.4
Jul	1,174.6	514.0	660.5	43.8	59.4
Aug	1,257.8	589.6	668.2	46.9	56.2
Sept	1,165.5	475.9	689.6	40.8	59.2
Oct	1,059.6	349.5	710.2	33.0	67.0
Nov	1,153.4	471.3	682.1	40.9	59.1
Dec	1,155.6	427.8	727.8	37.0	63.0
2025 (YTD)	3,614.4	1,423.8	2,190.6	39.4	60.6
Jan	1,229.5	476.8	752.6	38.8	61.2
Feb	1,130.0	384.3	745.7	34.0	66.0
Mar ^p	1,255.0	562.6	692.4	44.8	55.2

Notes:

(1) – Includes Crude Oil and LNG

(2) – Includes Methanol and Other Petroleum and Gas Products

p = provisional

Figures may not tally due to rounding.

Appendix 5: Exports and Imports by Trading Partners

Trading Partners	Value (BND Million)			Change (%)	
	Feb-24	Jan-25	Feb-25 ^p	Feb-25 ^p	Feb-25 ^p
				Feb-24 (y-o-y)	Jan-24 (m-o-m)
Exports to Trading Partners					
People's Republic of China	172.5	280.7	250.5	45.2	-10.8
Australia	238.6	256.2	193.5	-18.9	-24.5
Japan	233.2	257.2	177.8	-23.8	-30.9
Thailand	84.6	81.9	156.6	85.1	91.2
Viet Nam	23.2	11.6	151.3	552.2	1,204.3
Republic of Korea	0.2	0.0	100.5	50,150.0	-
Singapore	240.5	105.9	98.1	-59.2	-7.4
Philippines	22.9	24.8	59.8	161.1	141.1
Others	386.7	111.7	66.9	-82.7	-40.1
Total	1,402.4	1,130.0	1,255.0	-10.5	11.1
Imports from Trading Partners					
Malaysia	365.0	259.7	207.8	-43.1	-20.0
Russia	119.3	-	109.6	-8.1	-
Nigeria	-	-	106.2	-	-
Papua New Guinea	-	72.6	68.6	-	-5.5
Philippines	7.7	0.6	50.5	555.8	8,316.7
People's Republic of China	83.3	37.2	46.6	-44.1	25.3
United Arab Emirates	1.3	113.3	33.6	2,484.6	-70.3
Singapore	30.3	24.5	26.3	-13.2	7.3
Indonesia	21.3	11.7	20.7	-2.8	76.9
USA	43.3	17.5	18.1	-58.2	3.4
Others	184.5	127.1	72.0	-61.0	-43.4
Total	856.0	664.2	760.0	-11.2	14.4

Notes: p = provisional y-o-y = year-on-year m-o-m = month-on-month

Figures may not tally due to rounding.

Appendix 6: Imports by End Use Categories

Period	Value (BND Million)			
	Imports	Capital	Intermediate	Consumption
2024	9,753.9	3,431.2	5,930.0	392.6
Q1	2,569.5	864.8	1,581.3	123.3
Q2	2,668.5	941.1	1,649.0	78.4
Q3	2,386.2	845.5	1,438.2	102.5
Q4	2,129.7	779.8	1,261.2	88.4
Jan	855.4	249.1	538.4	67.9
Feb	858.1	304.4	532.0	21.6
Mar	856.0	311.3	510.9	33.8
Apr	991.0	341.9	623.1	26.0
May	1,016.8	361.3	628.2	27.3
Jun	660.7	237.9	397.7	25.1
Jul	795.2	283.4	477.0	34.8
Aug	765.0	285.4	450.6	29.0
Sep	826.1	276.7	510.6	38.7
Oct	618.7	235.5	356.6	26.7
Nov	724.1	271.5	424.0	28.6
Dec	786.8	272.8	480.9	33.1
2025 (YTD)	2,136.8	765.0	1,291.7	80.1
Jan	712.6	254.0	427.6	31.0
Feb	644.2	230.7	411.7	21.8
Mar ^p	760.0	280.3	452.4	27.3

Notes: p = provisional YTD = Year to Date

Figures may not tally due to rounding.

Appendix 7: Merchandise Goods by Mode of Transport

Period	Value (BND Million)							
	Exports				Imports			
	Air	Sea	Land	Others	Air	Sea	Land	Others
2024	205.9	14,798.9	29.1	0.0	733.4	8,680.6	339.6	0.2
Q1	57.6	4,205.2	5.4	-	187.3	2,305.4	76.7	0.1
Q2	84.5	3,703.5	11.2	0.0	154.3	2,434.5	79.5	0.0
Q3	30.8	3,562.0	5.1	-	191.6	2,100.3	94.4	0.0
Q4	33.1	3,328.2	7.5	-	200.2	1,840.3	89.0	0.0
2024 (YTD)	205.9	14,798.9	29.1	0.0	733.4	8,680.6	339.6	0.2
Jan	35.8	1,280.5	2.2	-	57.4	765.6	32.3	0.1
Feb	10.9	1,535.0	1.4	-	52.4	793.1	12.6	-
Mar	10.9	1,389.8	1.8	-	77.5	746.7	31.8	0.0
Apr	8.4	1,364.2	1.4	-	48.9	915.4	26.7	0.1
May	10.9	1,408.5	1.8	-	52.2	936.6	28.0	0.1
Jun	65.2	930.8	8.0	0.0	53.2	582.6	24.9	0.0
Jul	12.0	1,160.3	2.3	-	77.9	687.9	29.4	0.0
Aug	10.1	1,246.7	1.0	-	58.1	677.9	29.0	0.0
Sep	8.7	1,155.1	1.8	-	55.5	734.5	36.0	0.0
Oct	11.7	1,046.1	1.8	-	55.9	535.7	27.0	0.0
Nov	11.2	1,139.5	2.7	-	55.1	641.6	27.4	0.0
Dec	10.1	1,142.6	2.9	-	89.2	663.0	34.6	0.0
2025 (YTD)	50.1	2,306.0	3.4	-	101.4	1,222.7	52.6	0.0
Jan	9.0	1,218.9	1.6	-	55.8	630.1	26.6	0.0
Feb	41.1	1,087.1	1.8	-	45.6	592.6	26.0	0.0
Mar ^p	11.5	1,241.9	1.6	-	47.7	684.3	28.0	-

Notes: *p* = provisional '—' = Nil

Figures may not tally due to rounding.