



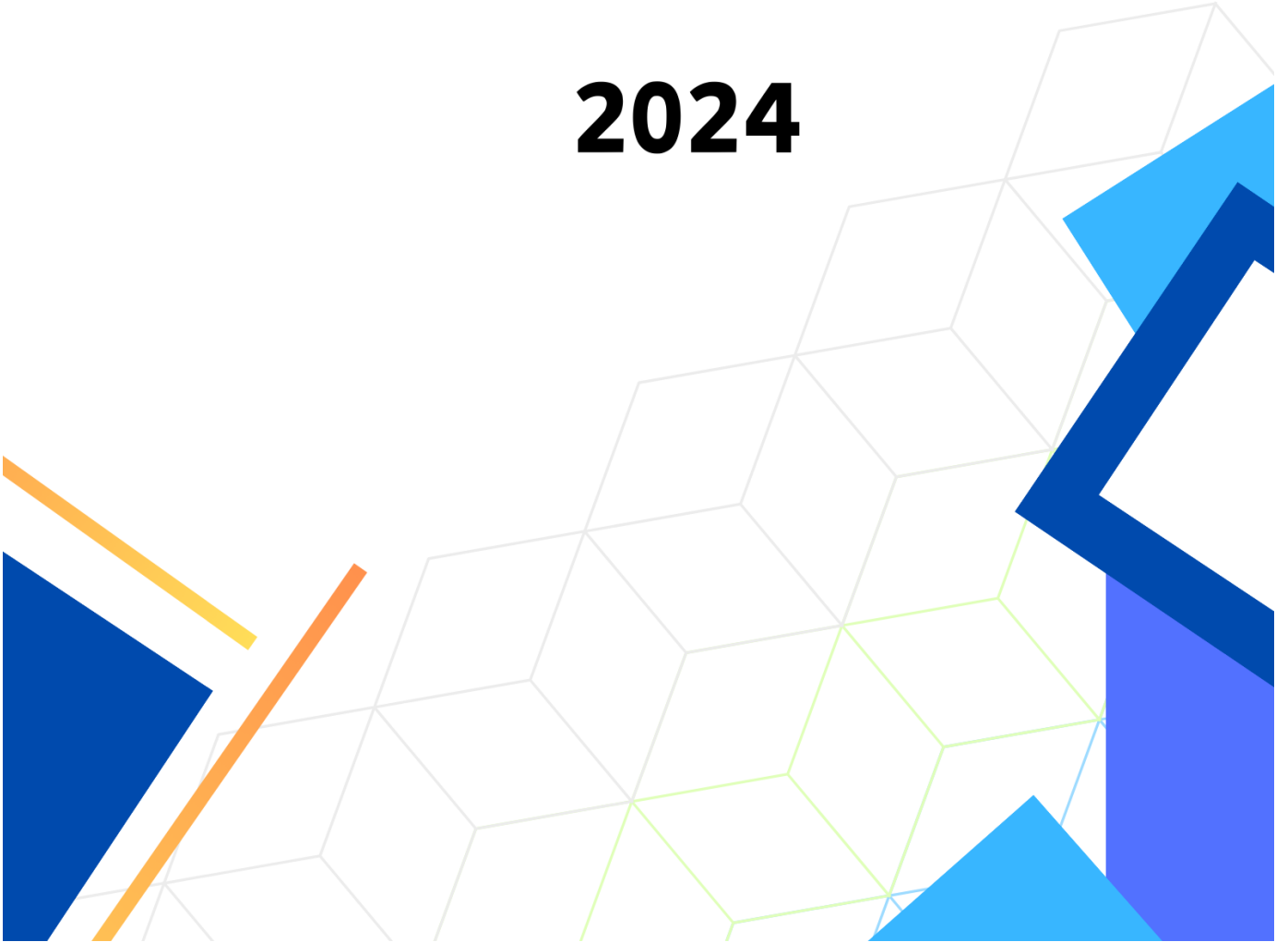
جباتن فرانچن ايكونومي دان ستاتيستيك

DEPARTMENT OF ECONOMIC PLANNING AND STATISTICS
MINISTRY OF FINANCE AND ECONOMY
BRUNEI DARUSSALAM

INTERNATIONAL MERCHANDISE TRADE STATISTICS

SEPTEMBER

2024





Website: deps.mofe.gov.bn
 Email: info.statistics@jpes.gov.bn
 Instagram: [@statistics.jpes](https://www.instagram.com/statistics.jpes)

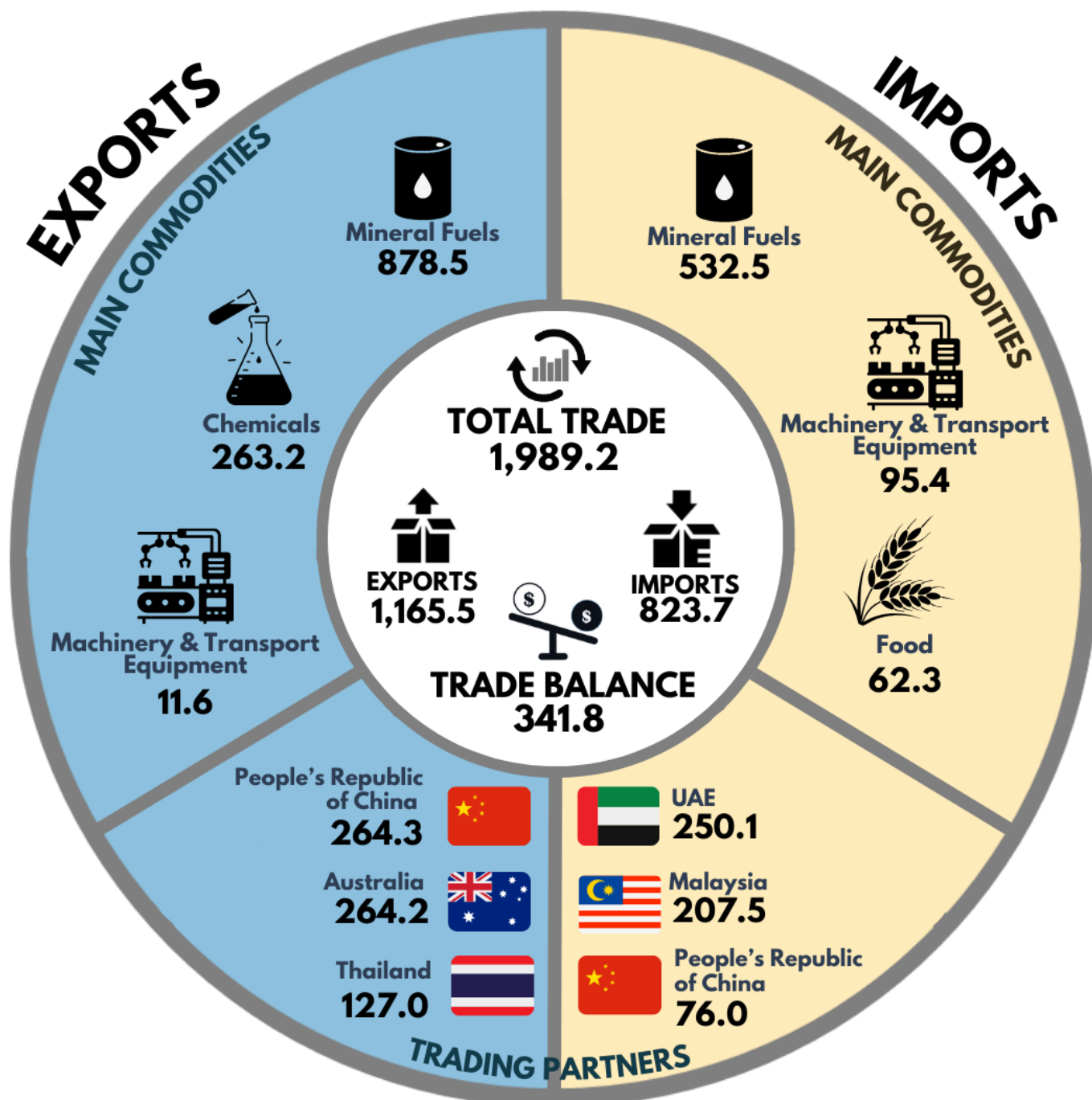


جباتن فرانچغن ايكونومي دان ستاتيستيك
 DEPARTMENT OF ECONOMIC PLANNING AND STATISTICS
 MINISTRY OF FINANCE AND ECONOMY
 BRUNEI DARUSSALAM

INTERNATIONAL MERCHANDISE TRADE STATISTICS

SEPTEMBER 2024

BND Million



INTERNATIONAL MERCHANDISE TRADE STATISTICS (IMTS) SEPTEMBER 2024

Highlights

Total trade for the month of September 2024 was BND1,989.2 million, comprising exports valued at BND1,165.5 million and imports amounting to BND823.7 million. This represented a decrease of 13.6 per cent year-on-year from BND2,302.5 million in September 2023.

The trade balance recorded a decrease of 45.7 per cent to BND341.8 million (September 2024) from BND629.1 million in September 2023.

On a month-on-month basis, total trade also recorded a decrease of 1.8 per cent from BND2,025.8 million (August 2024) to BND1,989.2 million in September 2024.

Table 1: Exports, Imports and Trade Balance

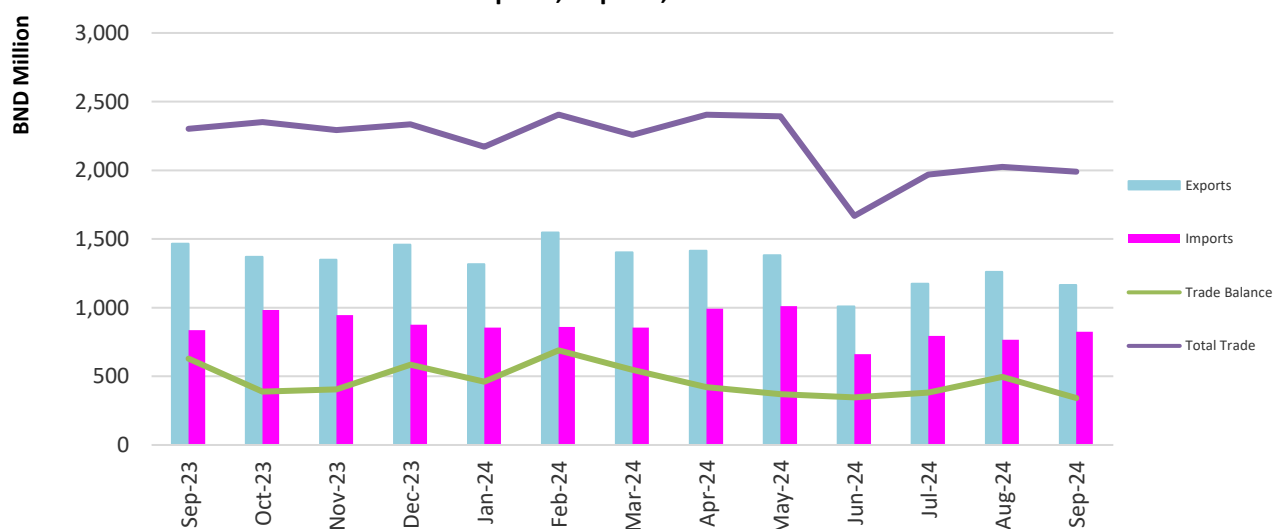
	Value (BND Million)					Change (%)		
	Sep-23	Aug-24	Sep-24 ^p	Jan-Sep 2023	Jan-Sep ^p 2024	Sep-24 ^p / Sep-23 (y-o-y)	Sep-24 ^p / Aug-24 (m-o-m)	Jan-Sep 2024 ^p / Jan-Sep 2023 (YTD)
Total Trade	2,302.5	2,025.8	1,989.2	17,793.9	19,284.5	-13.6	-1.8	8.4
Exports	1,465.8	1,260.4	1,165.5	10,587.9	11,669.0	-20.5	-7.5	10.2
Imports	836.7	765.4	823.7	7,206.0	7,615.5	-1.6	7.6	5.7
Trade Balance	629.1	495.0	341.8	3,381.9	4,053.5	-45.7	-30.9	19.9

Notes: *p* = provisional
m-o-m = month on month

Total Trade = Exports + Imports
y-o-y = year on year

Trade Balance = Exports – Import

Chart 1: Exports, Imports, Total Trade and Trade Balance



Merchandise Exports

Exports by Commodity Section

On a year-on-year basis, the merchandise exports decreased by 20.5 per cent to BND1,165.5 million in September 2024 from BND1,465.8 million in September 2023. Mineral Fuels recorded the highest share of total exports with 75.4 per cent (BND878.5 million), followed by Chemicals 22.6 per cent (BND263.2 million) and Machinery and Transport Equipment 1.0 per cent (BND11.6 million).

Meanwhile, on a month-on-month basis the merchandise exports also recorded a decrease of 7.5 per cent from BND1,260.4 million in August 2024 to BND1,165.5 million in September 2024.

Table 2: Exports by Commodity Sections

Section	Value (BND Million)			Change (%)		Contribution (%)
	Sep-23	Aug-24	Sep-24 ^p	Sep-24 ^p	Sep-24 ^p	
				Sep-23 (y-o-y)	Aug-24 (m-o-m)	Sep-24
Food	3.0	1.0	0.7	-76.7	-30.0	0.1
Beverages and Tobacco	0.0	0.0	0.0	0.0	0.0	0.0
Crude Materials Inedible	1.1	1.2	1.5	36.4	25.0	0.1
Mineral Fuels	1,119.4	951.5	878.5	-21.5	-7.7	75.4
Animal And Vegetable Oils and Fats	0.0	0.0	0.1	0.0	0.0	0.0
Chemicals	315.5	238.6	263.2	-16.6	10.3	22.6
Manufactured Goods	10.8	3.6	6.4	-40.7	77.8	0.5
Machinery and Transport Equipment	12.8	60.6	11.6	-9.4	-80.9	1.0
Miscellaneous Manufactured Articles	2.4	2.6	2.6	8.3	0.0	0.2
Miscellaneous Transactions	0.7	1.3	0.9	28.6	-30.8	0.1
TOTAL	1,465.8	1,260.4	1,165.5	-20.5	-7.5	100.0

Notes: *p* = provisional *y-o-y* = year-on-year *m-o-m* = month-on-month

Main Domestic Exports

On a year-on-year basis, the main domestic exports decreased by 20.5 per cent in September 2024 due to a decrease in both Mineral Fuels and Chemicals by 21.5 per cent and 16.8 per cent respectively.

In September 2024, the exports of Mineral Fuels decreased by 21.5 per cent driven by a 43.8 per cent decline in the exports of Other Petroleum Products from BND646.4 million to BND363.6 million. In contrast, exports of LNG, Other Gas Products and Crude Oil increased by 20.7 per cent, 6.8 per cent and 0.9 per cent respectively.

Meanwhile, the decrease in exports of Chemicals was driven by a 29.7 percent falls in the exports of Methanol from BND23.2 million in September 2023 to BND16.3 million (September 2024). Exports of Chemical and Related Products also decreased by 15.8 per cent from BND291.5 million (September 2023) to BND245.5 million in September 2024.

On a month-on-month basis, main domestic exports recorded a decrease of 4.1 percent in September 2024. This was due to a fall in the exports of Mineral Fuels by 7.7 per cent. On the other hand, the exports of Chemicals increased by 10.3 per cent in September 2024.

Table 3: Main Domestic Exports

	Value (BND Million)			Change %	
	Sep-23	Aug-24	Sep-24 ^P	Sep-24 ^P	Sep-24 ^P
				Sep-23 (y-o-y)	Aug-24 (m-o-m)
Exports	1,465.8	1,260.4	1,165.5	-20.5	-7.5
<i>Of which</i>					
Main Domestic Exports	1,434.0	1,188.8	1,140.3	-20.5	-4.1
Mineral Fuels	1,119.3	951.5	878.5	-21.5	-7.7
Crude Oil:					
Value (BND Million)	257.1	321.1	259.4	0.9	-19.2
Volume (kbbbl/day)	63.70	94.12	84.66	32.9	-10.1
Price (USD/bbl)	98.57	82.92	78.81	-20.0	-5.0
Liquefied Natural Gas:					
Value (BND Million)	179.3	268.4	216.5	20.7	-19.3
Volume (MMBtu/day)	452,115	655,074	566,484	25.3	-13.5
Price (USD/MMBtu)	9.69	10.02	9.84	1.5	-1.8
Other Petroleum Products:					
Value (BND Million)	646.4	328.4	363.6	-43.8	10.7
Other Gas Products:					
Value (BND Million)	36.5	33.6	39.0	6.8	16.1
Chemicals	314.7	237.3	261.8	-16.8	10.3
Methanol:					
Value (BND Million)	23.2	32.2	16.3	-29.7	-49.4
Chemicals and Related Products:					
Value (BND Million)	291.5	205.1	245.5	-15.8	19.7

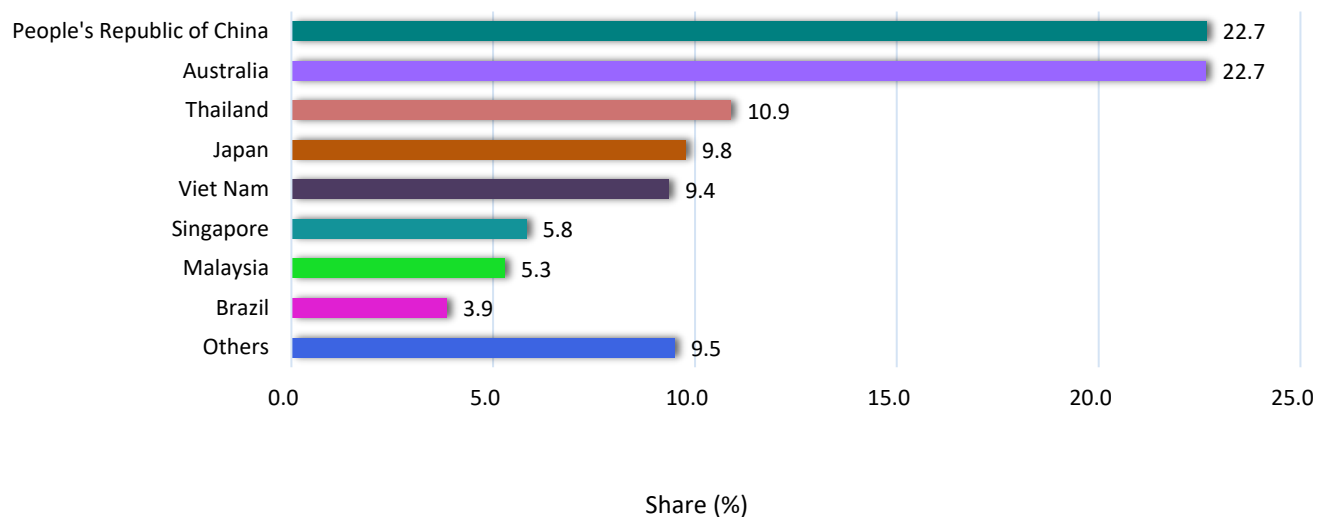
Source: Royal Brunei Customs and Excise Department, Ministry of Finance and Economy and Department of Energy, Prime Minister's Office

Notes: p = provisional y-o-y = year-on-year m-o-m = month-on-month
kbbbl = thousand barrels MMBtu = million metric British thermal units

Exports by Trading Partners

The highest share of exports in September 2024 went to People's Republic of China and Australia which share the same contribution of 22.7 per cent respectively. This was followed by Thailand (10.9 per cent) and Japan (9.8 per cent).

Chart 2: Share of Exports by Trading Partners



Merchandise Imports

Imports by Commodity Section

In September 2024, merchandise imports decreased by 1.6 per cent to BND823.7 million from BND836.7 million in September 2023. Mineral Fuels recorded the highest share of total imports with 64.6 percent (BND532.5 million) followed by Machinery and Transport Equipment (BND95.4 million) and Food (BND62.3 million).

Meanwhile, on a month-on-month basis, total imports recorded an increase of 7.6 per cent, mainly attributed to the increase import values of Crude Materials Inedible, Miscellaneous Manufactured Articles, Machinery and Transport Equipment, Mineral fuels and Animals and Vegetables Oils and Fats.

Table 4: Imports by Commodity Sections

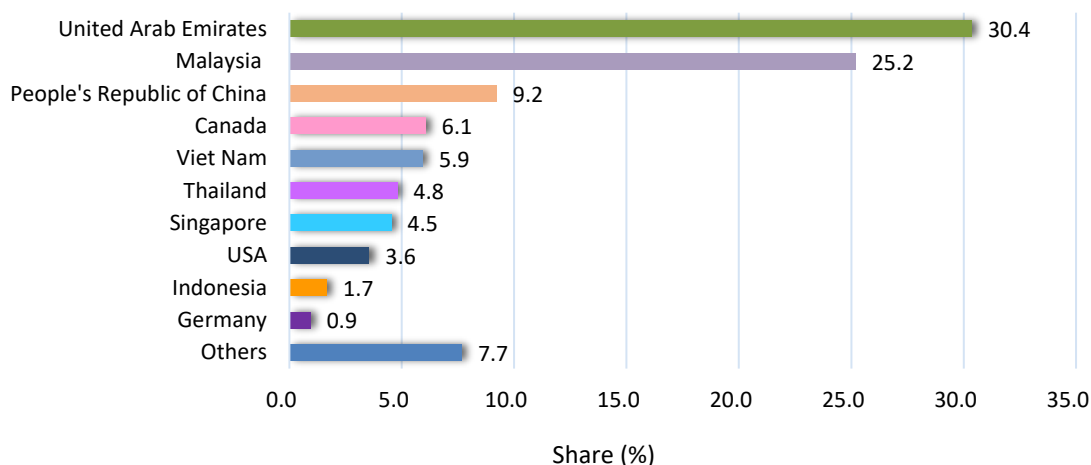
Section	Value (BND Million)			Change (%)		Contribution (%)
	Sep-23	Jul-24	Sep-24 ^p	Sep-24 ^p Sep-23	Sep-24 ^p Aug-24	
				(y-o-y)	(m-o-m)	Sep-24
Food	56.5	63.3	62.3	10.3	-1.6	7.6
Beverages and Tobacco	3.6	4.4	4.1	13.9	-6.8	0.5
Crude Materials Inedible	4.7	1.6	3.8	-19.1	143.6	0.5
Mineral Fuels	572.9	484.9	532.5	-7.1	9.8	64.6
Animal And Vegetable Oils and Fats	2.2	2.4	2.5	13.6	4.2	0.3
Chemicals	30.0	47.9	32.4	8.0	-32.4	3.9
Manufactured Goods	41.7	37.9	31.1	-25.4	-17.9	3.8
Machinery and Transport Equipment	96.3	83.5	95.4	-0.9	14.3	11.6
Miscellaneous Manufactured Articles	27.3	38.2	58.7	115.0	53.7	7.1
Miscellaneous Transactions	1.4	1.3	0.9	-35.7	-30.8	0.1
TOTAL	836.7	765.4	823.7	-1.6	7.6	100.0

Notes: *p* = provisional *y-o-y* = year-on-year *m-o-m* = month-on-month

Imports by Trading Partners

The highest share of imports in September 2024 came from United Arab Emirates, accounting for 30.4 percent, followed by Malaysia (25.2 per cent) and People's Republic of China (9.2 per cent).

Chart 3: Share of Imports by Trading Partners



Imports by End-Use Categories

In September 2024, the import of Intermediate Goods was valued at BND508.2 million, accounting for 61.7 per cent of total imports. This was followed by Capital Goods (BND277.0 million or 33.6 per cent of total imports); and Consumption Goods (BND38.5 million or 4.7 per cent of total imports).

Chart 4: Share (%) of Imports by End Use Categories, September 2024

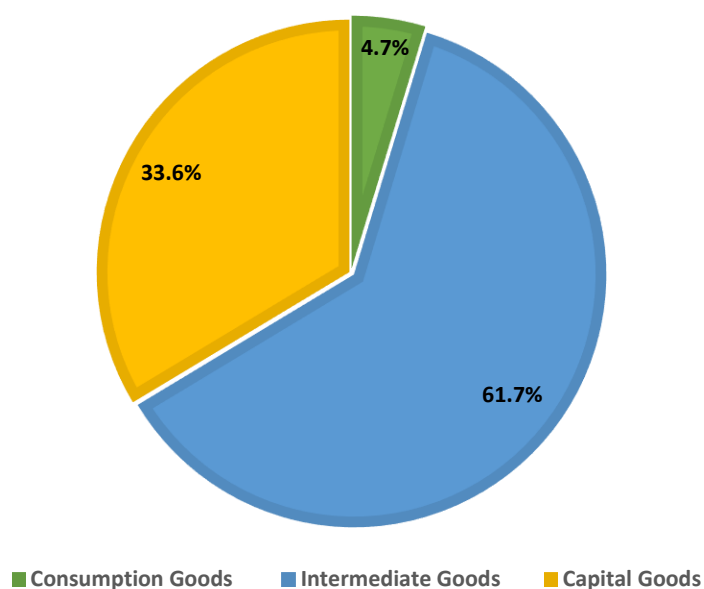


Table 5: Main Contribution to Imports by End Use Categories

Description	Value (BND Million)			Share (%)		
	Sep-23	Aug-24	Sep-24 ^p	Sep-23	Aug-24	Sep-24 ^p
Capital Goods	286.8	285.5	277.0	34.3	37.3	33.6
Mineral Fuels	203.0	195.9	193.8	24.3	25.6	23.5
Machinery and Transport Equipment	43.3	37.6	42.9	5.2	4.9	5.2
Chemicals	13.5	21.2	14.2	1.6	2.8	1.7
Others	27.0	30.8	26.1	3.2	4.0	3.2
Intermediate Goods	521.0	450.9	508.2	62.3	58.9	61.7
Mineral Fuels	369.8	288.6	338.4	44.2	37.7	41.1
Machinery and Transport Equipment	49.1	42.6	48.7	5.9	5.6	5.9
Food	43.2	48.4	47.6	5.2	6.3	5.8
Others	58.9	71.3	73.5	7.0	9.3	8.9
Consumption Goods	28.9	29.0	38.5	3.4	3.8	4.7
Food	13.4	14.9	14.7	1.6	1.9	1.8
Miscellaneous Manufactured Articles	3.0	3.2	11.9	0.4	0.4	1.4
Machinery and Transport Equipment	3.9	3.3	3.8	0.5	0.4	0.5
Others	8.6	7.6	8.1	0.9	1.1	1.0
Total	836.7	765.4	823.7	100.0	100.0	100.0

Notes: *p* = provisional Figures may not tally due to rounding.

Main Mode of Transport

The main mode of transport for Brunei Darussalam's international merchandise trading is sea transport, followed by air, land and other modes of transport.

In September 2024, the total value of goods transported by sea for both exports and imports were BND1,887.3 million. The relative share of sea transport accounted for 99.1 per cent for exports and 88.9 per cent imports. Goods transported by air contributed about 0.7 per cent of goods exports and 6.7 per cent of goods imports, meanwhile cross border trading via land recorded 0.2 per cent of exported goods and 4.4 per cent of imported goods.

Table 6: Exports and Imports by Mode of Transport

Mode of Transport	Value (BND Million)			Contribution (%)		
	Sep-23	Aug-24	Sep-24 ^P	Sep-23	Aug-24	Sep-24 ^P
Exports	1,465.8	1,260.4	1,165.5	100.0	100.0	100.0
Air	9.0	10.1	8.7	0.6	0.8	0.7
Sea	1,455.8	1,249.3	1,155.1	99.3	99.1	99.1
Land	1.0	1.0	1.8	0.1	0.1	0.2
Others	-	-	-	-	-	-
Imports	836.7	765.4	823.7	100.0	100.0	100.0
Air	59.1	58.1	55.5	7.1	7.6	6.7
Sea	748.9	678.3	732.2	89.5	88.6	88.9
Land	28.7	29.0	36.0	3.4	3.8	4.4
Others	0.0	0.0	0.0	0.0	0.0	0.0
Total	2,302.5	2,025.8	1,989.2	100.0	100.0	100.0
Air	68.1	68.2	64.2	3.0	3.4	3.2
Sea	2,204.7	1,927.6	1,887.3	95.8	95.2	94.9
Land	29.7	30.0	37.7	1.3	1.5	1.9
Others	0.0	0.0	0.0	0.0	0.0	0.0

Notes: ^p = provisional '-' = Nil

TECHNICAL NOTES

1. Introduction

The International Merchandise Trade Statistics (IMTS) are compiled on a monthly basis based on the imports and exports data submitted by the Royal Customs and Excise Department, Ministry of Finance and Economy through customs declarations, and the Department of Energy, Prime Minister's Office. The general system of recording IMTS adopted by Brunei Darussalam covers imports, domestic exports and re-exports that have been cleared through customs.

2. Coverage of Merchandise

All goods imported into or exported from Brunei Darussalam are included in the IMTS.

The following classes of goods are excluded:

- currency notes and coins in circulation;
- personal and household effects which do not incur any Brunei Darussalam customs duty and which are taken by passengers for their own use;
- stores and fuel supplied to Brunei ships and aircraft;
- articles on loan or rent, for example, equipment for oil surveys and experimental drilling, etc.;
- goods in transit;
- fish and other marine products landed from Brunei Darussalam fishing vessels direct from fishing grounds;
- goods imported and exported by or on behalf of diplomatic services; and
- goods imported by the armed forces.

3. Time of Recording

Brunei Darussalam uses the 'release date' as its time of recording, which provides the time/date that stipulated in source documents when goods enter or leave the economic territory.

4. Valuation

Imports are valued at CIF, that is, the value of goods at the frontier of the exporting trading partners plus the cost of insurance and freight and any other charges when sold for export to Brunei Darussalam. Custom duties are not included in the value of imports.

Exports are valued at FOB, that is, the value of goods to be purchased abroad up to the point where the goods are deposited on board the outgoing vessel, aircraft and/or vehicle. Goods on consignment are valued at the current import price for imports and the current export price for exports.

Goods are recorded at their market value. Values are reported in millions of Brunei dollars. Data reported in foreign currencies are converted into local currency at the prevailing market exchange rate on the date of permit clearance.

5. Commodity Classification

Commodity items reported are classified in accordance with the Brunei Darussalam Trade Classification and Customs Duties 2022. This classification incorporates the ASEAN Harmonized Tariff Nomenclature (AHTN), which is based on the 8-digits Harmonised Commodity Description and Coding System Nomenclature (H.S) developed by the World Customs Organisation (WCO).

For International comparability in this report, import and export are classified according to the United Nations Standard Trade Classification, Revision 4 (SITC Rev. 4).

The imports data can also be categorized according to their end-use categories, namely Capital, Intermediate or Consumption based on Brunei Darussalam's Broad Economic Categories (BDBEC), which is adapted from United Nation, the Fifth revision of Broad Economic Categories.

The BDBEC is classified in accordance with Broad Economic Category introduced by the United Nations and as a means for converting data compiled in terms of SITC into end-use categories.

The BDBEC provides categories which can be aligned into 3 classes of goods in the System of National Accounts (SNA):

- Capital Goods are used as a means of producing other goods or services.
- Intermediate Goods are semi-processed, semi-manufactured and industrial-supplies; and transformed or used up in the production of goods and services.
- Consumption Goods are final product mainly used by households for final consumption.

6. Mode of transport

Merchandise trade in goods by mode of transport are compiled according to the means of transport used when goods enter or leave the economic territory of the economy. The following classifications are the main categories of the mode of transport:

1. Air;
2. Sea;
3. Land; and
4. Others include postal consignments, mail or courier shipments and goods crossing the border not to attribute a transaction to any specific mode of transport categories.

The method of transport used for the carriage of goods is recorded as the mode of transport such as aircraft, vehicle, vessel and other type of transport of goods. The mode of transport for imports refers to the last mode of transport by which the cargo was transported to the port of clearance into the economy whereas, for exports the mode of transport information records the last mode of transport with which cargo crossed the customs border on its exit from the economy.

Appendix 1: Exports, Imports, Total Trade and Trade Balance

Period	Value (BND Million)					
	Exports			Imports	Total Trade	Trade Balance
	Total	Domestic Exports	Re-Exports			
2023	14,765.4	13,438.5	285.5	10,007.2	24,772.6	4,758.2
Q1	3,783.9	3,696.3	87.6	2,258.5	6,042.4	1,525.4
Q2	2,711.8	2,642.9	67.6	2,323.0	5,034.8	388.8
Q3	4,092.4	2,987.3	65.0	2,624.5	6,716.8	1,467.9
Q4	4,177.3	4,112.0	65.3	2,801.2	6,978.6	1,376.1
Jan	1,551.2	1,502.8	48.4	882.4	2,433.6	668.8
Feb	1,260.3	1,240.8	19.5	891.6	2,151.9	368.6
Mar	972.4	952.7	19.7	484.5	1,456.9	487.9
Apr	762.9	746.6	16.3	629.9	1,392.8	133.0
May	1,076.2	1,048.6	27.6	665.6	1,741.8	410.6
Jun	872.6	849.0	23.7	1,027.5	1,900.2	-154.9
Jul	1,177.1	1,155.6	21.6	740.1	1,917.2	437.0
Aug	1,449.4	1,427.5	21.9	1,047.7	2,497.1	401.7
Sep	1,465.8	1,444.3	21.5	836.7	2,302.5	629.1
Oct	1,369.6	1,345.1	24.4	981.9	2,351.5	387.7
Nov	1,348.4	1,322.2	26.2	944.4	2,292.8	404.0
Dec	1,459.3	1,444.7	14.6	874.9	2,334.3	584.4
2024 (YTD)	11,669.0	11,322.4	346.6	7,615.5	19,284.6	4,053.6
Jan	1,315.6	1,261.6	54.0	855.4	2,171.0	460.2
Feb	1,547.3	1,523.5	23.8	858.2	2,405.5	689.1
Mar	1,402.4	1,371.4	31.0	855.8	2,258.2	546.6
Apr	1,413.3	1,392.3	21.0	991.0	2,404.3	422.3
May	1,382.1	1,359.7	22.5	1,011.5	2,393.6	370.6
Jun	1,007.5	925.1	82.4	660.3	1,667.8	347.2
Jul	1,174.9	1,153.6	21.4	794.2	1,969.1	380.7
Aug	1,260.4	1,192.2	68.2	765.4	2,025.8	495.0
Sep ^p	1,165.5	1,143.1	22.4	823.7	1,989.2	341.8

Notes:

Total Trade = Exports+Imports Trade Balance = Exports – Imports

p = provisional YTD = Year to Date

Figures may not tally due to rounding.

Appendix 2: Merchandise Exports by Commodity Section

Period	Value (BND Million)										
	Total	Food	Beverages and Tobacco	Crude Materials Inedible	Mineral Fuels	Animal and Vegetable Oils and Fats	Chemicals	Manufactured Goods	Machinery and Transport Equipment	Miscellaneous Manufactured Articles	Miscellaneous Transactions
2023	14,765.4	25.1	0.2	18.8	11,358.6	0.5	3,030.2	109.5	156.1	56.5	9.8
Jan	1,551.2	2.6	0.0	3.6	1,145.9	0.0	344.4	21.9	8.3	23.9	0.6
Feb	1,260.3	1.4	0.0	1.7	985.3	0.0	244.1	11.1	12.7	2.5	1.4
Mar	972.4	1.8	0.0	2.3	819.7	0.1	125.0	9.0	12.5	1.4	0.5
Apr	762.3	2.8	0.0	2.1	586.3	0.0	147.6	9.3	12.6	1.5	0.7
May	1,076.2	2.9	0.1	1.3	800.8	0.0	236.4	11.7	19.5	3.1	0.4
Jun	872.6	2.9	0.0	0.6	617.6	0.1	224.8	8.2	13.9	3.6	0.8
Jul	1,177.1	2.1	0.0	1.2	956.9	0.0	193.0	8.1	13.4	1.3	1.0
Aug	1,449.4	2.6	0.0	1.2	1,065.7	0.0	356.0	5.2	11.3	5.7	1.7
Sep	1,465.8	3.0	0.0	1.1	1,119.4	0.0	315.5	10.8	12.8	2.4	0.7
Oct	1,369.6	0.5	0.0	1.4	1,054.0	0.0	286.6	6.2	15.7	4.8	0.4
Nov	1,348.4	1.3	0.0	1.0	1,030.8	0.0	289.6	5.7	15.5	3.5	1.0
Dec	1,459.3	1.2	0.0	1.3	1,176.1	0.0	267.3	2.4	7.9	2.7	0.4
2024 (YTD)	11,669.0	9.4	0.0	12.9	8,863.9	0.4	2,447.5	48.0	252.8	24.1	10.0
Jan	1,315.6	1.5	0.0	1.6	983.1	0.0	277.0	5.5	43.0	2.5	1.3
Feb	1,547.3	0.7	0.0	1.7	1,201.8	0.1	322.4	4.6	12.5	3.1	0.4
Mar	1,402.4	0.7	0.0	2.3	1,086.6	0.1	283.8	8.4	17.3	2.8	0.4
Apr	1,413.3	1.3	0.0	1.1	1,053.0	0.0	332.4	8.4	14.3	1.5	1.3
May	1,382.1	1.3	0.0	1.2	1,061.5	0.0	297.3	4.8	11.0	3.5	1.5
Jun	1,007.5	1.2	0.0	1.2	720.6	0.0	208.2	2.7	69.6	2.4	1.5
Jul	1,174.9	1.2	0.0	1.1	927.3	0.1	224.6	3.5	12.9	3.0	1.3
Aug	1,260.4	1.0	0.0	1.2	951.5	0.0	238.6	3.6	60.6	2.6	1.3
Sep ^p	1,165.5	0.7	0.0	1.5	878.5	0.1	263.2	6.4	11.6	2.6	0.9

Notes: ^p = provisional

YTD = Year to Date

Figures may not tally due to rounding.

Appendix 3: Merchandise Imports by Commodity Section

Period	Value (BND Million)										
	Total	Food	Beverages and Tobacco	Crude Materials Inedible	Mineral Fuels	Animal and Vegetable Oils and Fats	Chemicals	Manufactured Goods	Machinery and Transport Equipment	Miscellaneous Manufactured Articles	Miscellaneous Transactions
2023	10,007.2	735.1	61.3	32.1	6,320.1	26.7	703.4	559.9	1,196.5	357.8	14.4
Jan	882.4	79.4	4.8	2.0	582.0	2.2	39.0	35.4	108.3	27.8	1.5
Feb	891.6	56.4	7.2	1.7	628.7	1.9	37.6	34.4	92.8	30.0	0.9
Mar	484.5	63.2	7.8	2.1	10.0	3.5	218.3	43.7	95.4	38.9	1.5
Apr	629.9	66.1	6.9	4.9	312.4	2.5	52.0	44.1	108.7	31.7	0.6
May	665.6	54.9	4.3	2.4	420.2	1.7	33.5	38.5	82.1	26.2	1.8
Jun	1,027.5	67.7	4.4	2.3	711.5	2.6	30.8	74.6	105.9	25.9	1.7
Jul	740.1	58.9	5.4	2.3	429.9	1.9	56.3	42.6	113.5	28.5	0.7
Aug	1,047.7	59.8	4.1	1.7	690.4	2.4	95.1	80.1	82.4	30.4	1.2
Sep	836.7	56.5	3.6	4.7	572.9	2.2	30.0	41.7	96.3	27.3	1.4
Oct	981.9	59.3	4.1	3.4	694.1	2.0	38.0	38.7	109.9	31.3	1.3
Nov	944.4	57.1	4.6	2.2	648.4	1.9	28.3	43.4	126.0	30.7	0.6
Dec	874.9	55.5	4.0	2.5	619.4	1.8	44.3	42.7	74.3	29.1	1.3
2024 (YTD)	7,615.5	576.3	37.2	27.1	5,128.6	18.5	317.1	473.8	732.7	295.4	8.9
Jan	855.4	69.3	4.1	2.2	478.9	1.7	33.0	153.1	79.7	32.7	0.7
Feb	858.2	42.7	4.1	2.0	647.4	1.7	25.2	40.4	66.5	27.8	0.6
Mar	855.8	68.4	7.1	6.1	565.6	2.2	41.5	40.8	91.5	30.9	1.7
Apr	991.0	59.6	4.7	2.2	742.7	1.7	33.3	52.4	67.6	26.0	0.8
May	1,011.5	64.1	2.9	1.8	762.5	1.9	30.4	38.8	84.1	23.8	1.1
Jun	660.3	57.0	3.4	1.3	415.1	2.4	34.5	46.0	73.8	26.1	0.8
Jul	794.2	89.7	2.4	5.9	498.9	2.0	39.0	33.3	90.6	31.3	1.1
Aug	765.4	63.3	4.4	1.6	484.9	2.4	47.9	37.9	83.5	38.2	1.3
Sep ^p	823.7	62.3	4.1	3.8	532.5	2.5	32.4	31.1	95.4	58.7	0.9

Notes: p = provisional

Figures may not tally due to rounding.

Appendix 4: Exports of Oil and Gas and Non-Oil and Gas Sector

Period	Exports	Value (BND Million)		Contribution (%)	
		Oil and Gas ⁽¹⁾ Sector	Non-Oil and ⁽²⁾ Gas Sector	Oil and Gas Sector	Non-Oil and Gas Sector
2023	14,765.4	5,836.3	8,929.1	39.5	60.5
Q1	3,783.9	1,761.1	2,022.8	46.5	53.5
Q2	2,711.8	1,055.7	1,656.1	38.9	61.1
Q3	4,092.4	1,368.6	2,723.7	33.4	66.1
Q4	4,177.3	1,650.9	2,526.5	39.5	60.5
Jan	1,551.2	620.7	930.5	40.4	60.0
Feb	1,260.3	533.0	727.3	42.3	57.7
Mar	972.4	607.4	365.0	62.5	37.5
Apr	762.9	485.1	277.8	63.6	36.4
May	1,076.2	329.9	746.3	30.7	69.3
Jun	872.6	240.7	632.0	27.6	72.4
Jul	1,177.1	499.1	678.0	42.4	57.6
Aug	1,449.4	433.1	1,016.3	29.9	70.1
Sept	1,465.8	436.4	1,029.4	29.8	70.2
Oct	1,369.6	491.1	878.5	35.9	64.1
Nov	1,348.4	497.3	851.1	36.9	63.1
Dec	1,459.3	662.5	769.9	45.4	54.6
2024 (YTD)	11,669.0	4,759.8	6,909.2	40.8	59.2
Jan	1,315.6	530.9	784.7	40.4	59.6
Feb	1,547.3	668.5	878.8	43.2	56.8
Mar	1,402.4	533.4	869.0	38.0	62.0
Apr	1,413.3	519.4	893.9	36.8	63.2
May	1,382.1	520.8	861.3	37.7	62.3
Jun	1,007.5	407.2	600.3	40.4	59.6
Jul	1,174.9	514.0	660.9	43.8	56.2
Aug	1,260.4	589.6	670.9	46.8	53.2
Sep ^p	1,165.5	475.9	689.6	40.8	59.2

Notes:

(1) – Includes Crude Oil and LNG

(2) – Includes Methanol and Other Petroleum and Gas Products

^p = provisional

Figures may not tally due to rounding.

Appendix 5: Exports of Crude Oil and Liquefied Natural Gas (LNG) by Trading Partners

Trading Partners	Value (BND Million)			Change (%)	
	Sep-23	Aug-24	Sep-24 ^P	Sep-24 ^P	Sep-24 ^P
				Sep-23 (y-o-y)	Aug-24 (m-o-m)
Total	420.2	589.5	475.9	13.3	-19.3
Crude Oil	240.9	321.1	259.4	7.7	-19.2
Australia	75.9	43.3	73.7	-2.9	70.2
Indonesia	80.2	77.5	-	-	-
Singapore	-	66.6	-	-	-
Thailand	42.4	69.7	125.0	194.8	79.3
Malaysia	42.4	-	-	-	-
Viet Nam	-	-	60.7	-	-
Japan	-	32.6	-	-	-
India	-	31.3	-	-	-
LNG	179.3	268.4	216.5	20.7	-19.3
Japan	44.5	167.3	113.8	155.7	-32.0
People's Republic of China	78.3	-	102.7	31.2	-
Republic of Korea	-	101.1	-	-	-
Thailand	56.5	-	-	-	-

Notes: p = provisional y-o-y = year-on-year m-o-m = month-on-month '-' = Nil
 Figures may not tally due to rounding

Appendix 6: Exports and Imports by Trading Partners

Trading Partners	Value (BND Million)			Change (%)	
	Sep-23	Aug-24	Sep-24 ^p	Sep-24 ^p	Sep-24 ^p
				Sep-23 (y-o-y)	Aug-24 (m-o-m)
Exports to Trading Partners					
People's Republic of China	224.2	216.4	264.3	17.9	22.1
Australia	356.7	185.7	264.2	-25.9	42.3
Thailand	106.8	74.8	127.0	18.9	69.8
Japan	46.6	203.0	113.9	144.4	-43.9
Viet Nam	27.0	18.3	109.1	304.1	496.2
Singapore	253.1	180.1	67.9	-73.2	-62.3
Malaysia	136.6	81.1	61.7	-54.8	-23.9
Brazil	62.3	0.0	44.9	-27.9	-
Others	252.5	301.0	112.5	-55.4	-62.6
Total	1,465.8	1,260.4	1,165.5	-20.5	-7.5
Imports from Trading Partners					
United Arab Emirates	175.9	1.8	250.1	42.2	13,794.4
Malaysia	270.0	304.6	207.5	-23.1	-31.9
People's Republic of China	34.8	79.2	76.0	118.4	-4.0
Canada	0.6	0.4	50.0	8,233.3	12,400.0
Viet Nam	7.7	2.4	49.0	536.4	1,941.7
Thailand	9.9	11.1	39.6	300.0	256.8
Singapore	32.3	26.6	37.4	15.8	40.6
USA	44.0	24.1	29.3	-33.4	21.6
Indonesia	11.7	19.8	13.8	17.9	-30.3
Germany	8.3	5.1	7.8	-6.0	52.9
Others	241.5	290.3	63.2	-73.8	-78.2
Total	836.7	765.4	823.7	-1.6	7.6

Notes: *p* = provisional *y-o-y* = year-on-year *m-o-m* = month-on-month

Figures may not tally due to rounding.

Appendix 7: Imports by End Use Categories

Period	Value (BND Million)			
	Imports	Capital	Intermediate	Consumption
2023	10,007.2	3,388.4	6,117.6	501.2
Q1	2,258.5	800.9	1,357.7	99.8
Q2	2,323.0	812.0	1,417.8	93.3
Q3	2,624.5	904.0	1,631.8	88.7
Q4	2,801.2	1,007.6	1,710.3	83.3
Jan	882.4	290.9	558.0	33.5
Feb	891.6	335.0	529.3	27.3
Mar	484.5	175.1	270.4	39.0
Apr	629.9	233.5	360.7	35.7
May	665.6	206.5	433.7	25.4
Jun	1,027.5	372.0	623.4	32.1
Jul	740.1	257.6	453.8	28.7
Aug	1,047.7	359.5	657.0	31.2
Sep	836.7	286.8	521.0	28.9
Oct	981.9	351.6	601.6	28.7
Nov	944.4	343.4	572.7	28.3
Dec	874.9	312.6	536.0	26.3
2024 (YTD)	7,615.5	2,648.9	4,662.6	304.0
Jan	855.4	249.1	538.4	67.9
Feb	858.2	304.4	532.1	21.7
Mar	855.8	311.2	510.8	33.8
Apr	991.0	341.9	623.1	26.0
May	1,011.5	359.1	625.2	27.2
Jun	660.3	237.7	397.5	25.1
Jul	794.2	283.0	476.4	34.8
Aug	765.4	285.5	450.9	29.0
Sep ^p	823.7	277.0	508.2	38.5

Notes: p = provisional YTD = Year to Date

Figures may not tally due to rounding.

Appendix 8: Merchandise Goods by Mode of Transport

Period	Value (BND Million)							
	Exports				Imports			
	Air	Sea	Land	Others	Air	Sea	Land	Others
2023	147.6	14,599.1	18.8	-	956.4	8,722.0	328.7	0.1
Q1	52.1	3,728.1	3.8	-	344.9	1,829.4	84.2	0.1
Q2	35.9	2,670.8	5.1	-	158.6	2,085.3	79.1	0.0
Q3	29.2	4,059.1	4.1	-	197.6	2,342.5	84.4	0.0
Q4	30.4	4,141.1	5.8	-	255.3	2,464.8	81.0	0.0
2023 (YTD)	147.6	14,599.0	18.8	-	956.4	8,722.0	328.7	0.1
Jan	27.2	1,523.0	1.0	-	67.5	788.6	26.3	0.0
Feb	13.1	1,246.3	0.9	-	57.1	808.2	26.4	0.1
Mar	11.7	958.8	1.8	-	220.3	232.6	31.6	0.0
Apr	10.9	751.2	0.9	-	55.8	550.2	23.8	0.0
May	13.9	1,059.8	2.5	-	49.8	587.6	28.1	0.0
Jun	11.2	859.8	1.7	-	53.0	947.5	27.1	0.0
Jul	7.2	1,168.1	1.8	-	73.0	641.1	26.0	0.0
Aug	13.0	1,435.1	1.3	-	65.5	952.5	29.7	0.0
Sep	9.0	1,455.8	1.0	-	59.1	748.9	28.7	0.0
Oct	13.3	1,354.8	1.5	-	90.7	863.0	28.2	0.0
Nov	10.4	1,336.4	1.6	-	105.5	811.5	27.3	0.0
Dec	6.7	1,449.9	2.7	-	59.1	790.3	25.5	0.0
2024 (YTD)	172.8	11,474.6	21.6	0.0	533.2	6,831.5	250.6	0.2
Jan	35.8	1,277.6	2.2	-	57.4	765.6	32.3	0.1
Feb	10.9	1,535.0	1.4	-	52.4	793.2	12.6	-
Mar	10.9	1,389.8	1.8	-	77.5	746.5	31.8	0.0
Apr	8.4	1,403.5	1.4	-	48.9	915.4	26.7	0.1
May	10.9	1,369.4	1.8	-	52.2	931.3	28.0	0.1
Jun	65.2	934.3	8.0	0.0	53.2	582.2	24.9	0.0
Jul	12.0	1,160.6	2.3	-	77.9	686.9	29.4	0.0
Aug	10.1	1,249.3	1.0	-	58.1	678.3	29.0	0.0
Sep ^p	8.7	1,155.1	1.8	-	55.5	732.2	36.0	0.0

Notes: p = provisional '–' = Nil
 Figures may not tally due to rounding.