



BRUNEI DARUSSALAM KEY INDICATORS 2021

Department of Statistics
Department of Economic Planning and Statistics
Ministry of Finance and Economy
Brunei Darussalam

BRUNEI DARUSSALAM KEY INDICATORS 2021



Perpustakaan Dewan Bahasa dan Pustaka Brunei
Pengkatalogan Data-dalam-penerbitan

BRUNEI Darussalam Key Indicators 2021. --Bandar Seri Begawan :
Department of Statistics, Department of Economic Planning and
Statistics, Ministry of Finance and Economy, 2022.
80pages. 10.16cm x 13.46cm.
ISBN 978-99917-72-36-3 (paperback)
ISBN 978-99917-72-37-0 (e-book edition)
1. Economic indicators--Brunei Darussalam--Statistics--Periodicals
2. Brunei Darussalam--Economic conditions--Statistics--Periodicals
I. Jabatan Perancangan Ekonomi dan Statistik

330.905955 BRU (DDC 23)

DEPARTMENT OF STATISTICS
DEPARTMENT OF ECONOMIC PLANNING AND STATISTICS
MINISTRY OF FINANCE AND ECONOMY
BRUNEI DARUSSALAM

TABLE OF CONTENTS:

	<i>PAGE</i>
INFOGRAPHICS	i - iv
1) POPULATION	1 - 3
2) LABOUR FORCE	4 - 5
3) VITAL STATISTICS	6 - 9
4) GROSS DOMESTIC PRODUCT	10 - 28
5) INTERNATIONAL MERCHANDISE TRADE STATISTICS	29 - 36
6) FOREIGN DIRECT INVESTMENT	37 - 40
7) CONSUMER PRICE INDEX	41 - 42
8) OIL AND GAS	43 - 44
9) BANKING AND FINANCE	45 - 49
10) GOVERNMENT FINANCE	50 - 51

TABLE OF CONTENTS:

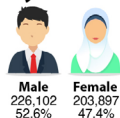
	<i>PAGE</i>
11) EDUCATION	52 - 55
12) HEALTH	56 - 57
13) TRANSPORT	58 - 60
14) COMMUNICATION	61 - 62
15) UTILITIES	63
16) PRIMARY SECTOR	64 - 68
17) MISCELLANEOUS	69 - 71
18) NOTES	72 - 73
19) LIST OF SOURCES	74 - 76
20) ENQUIRIES	77



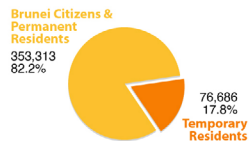
POPULATION 2021

Land Area: 5,765 sq km
Total Population: 429,999
Annual Growth Rate: -5.2%

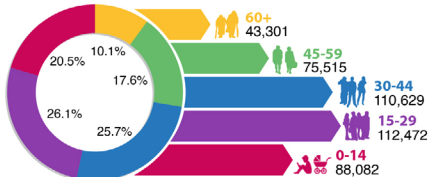
- By Gender -



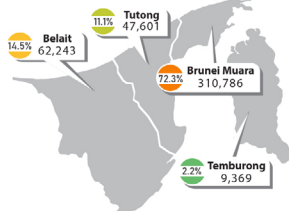
- By Residential Status -



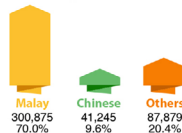
- By Age Group - *



- By District - *

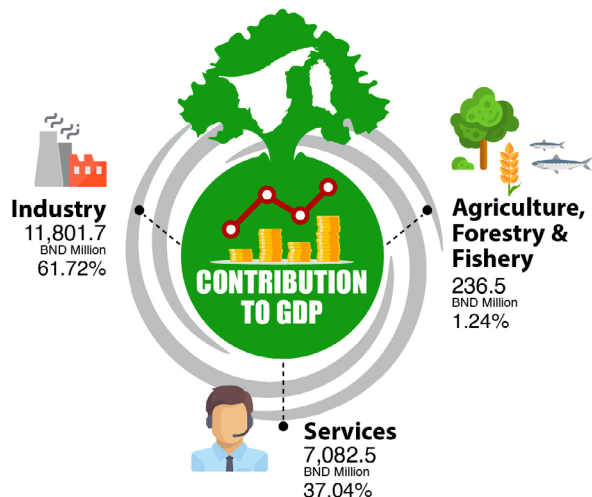


- By Race -



GROSS DOMESTIC PRODUCT

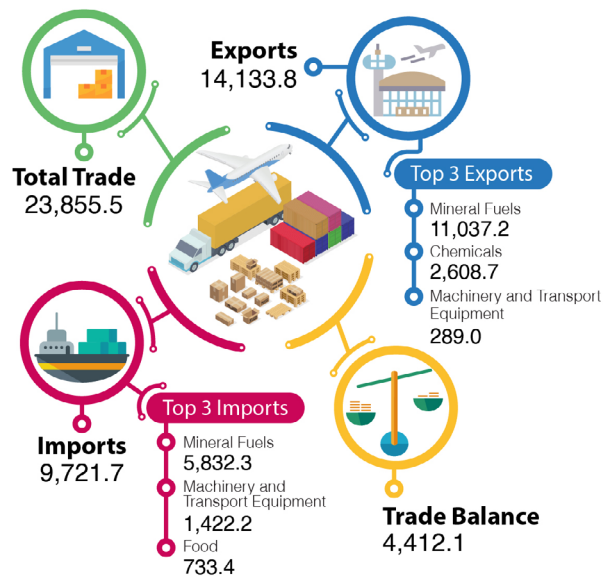
By Economic Activities at Current Prices



* Note: Data may not add up to the total due to rounding

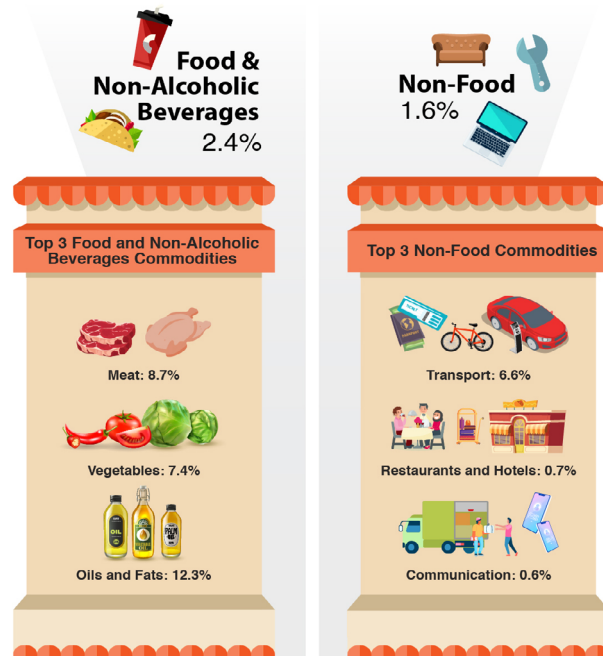


INTERNATIONAL MERCHANDISE TRADE STATISTICS 2021 (BND MILLION)



CONSUMER PRICE INDEX 2021

INFLATION RATE: 1.7%





2019

2020

2021^P**Total (Persons)**

459,500

453,600

429,999

Male

244,500

240,700

226,102

Female

215,000

212,900

203,897

Annual Growth Rate (%)

3.9

-1.3

-5.2

Area: 5,765 Square Km**Population Density**

79.7

78.7

74.6

(Persons per Square Km)

Population by District (Persons)

Brunei Muara

319,500

316,100

310,786

Belait

75,900

74,800

62,243

Tutong

52,700

51,500

47,601

Temburong

11,400

11,200

9,369



2019

2020

2021^P**Population by Residential Status (Persons)**

459,500

453,600

429,999

Brunei Citizens and Permanent Residents

365,300

369,700

353,313

Temporary Residents

94,200

83,900

76,686

Population by Race (Persons)

459,500

453,600

429,999

Malays

302,200

298,400

300,875

Chinese

47,200

46,400

41,245

Others

110,100

108,800

87,879



	2019	2020	2021 ^p
Population Median Age (Years)	30.6	31.3	31.4
Total Population	459,500	453,600	429,999
0-4	30,700	30,700	27,121
5-9	32,400	31,500	30,926
10-14	31,500	30,300	30,035
15-19	37,300	34,100	33,334
20-24	43,200	41,500	37,775
25-29	45,300	43,800	41,363
30-34	43,600	41,600	39,865
35-39	40,300	39,200	36,962
40-44	36,500	35,800	33,802
45-49	32,200	31,800	29,891
50-54	26,200	26,300	25,627
55-59	21,800	21,800	19,997
60-64	16,300	18,000	16,122
65 and Over	22,200	27,200	27,179



	2018	2019	2020
Working Age Population (18-59 Years)	276,208	298,621	291,642
Labour Force (Persons)	213,731	227,751	225,535
Male	124,059	138,407	136,936
Female	89,673	89,344	88,598
Employed (Persons)	195,138	212,074	208,693
Male	114,564	130,152	128,121
Female	80,574	81,921	80,572
Unemployed (Persons)	18,593	15,677	16,842
Male	9,495	8,255	8,816
Female	9,098	7,423	8,026
Labour Force Participation Rate (%)	77.4	76.3	77.3
Male	85.1	84.7	85.9
Female	68.7	66.1	67.0
Unemployment Rate (%)	8.7	6.9	7.5
Male	7.7	6.0	6.4
Female	10.1	8.3	9.1



	2019	2020	2021
Government Employees by Division (Number) ⁽¹⁾	49,227	49,658	45,701
Division I	1,007	1,076	987
Division II	11,319	11,672	11,121
Division III	11,300	11,205	10,360
Division IV	11,870	12,033	11,014
Division V	13,731	13,672	12,219
Number of Active Members at Employees Trust Fund (Number)	98,141	98,405	100,919
Government	41,887	40,076	40,198
Private	56,254	58,329	60,721



	2018	2019	2020
Registered Live Births (Persons)	6,199	6,178	6,498
Male	3,239	3,186	3,391
Female	2,960	2,992	3,107
Birth Ratio (Male per 100 Female)	109.4	106.5	109.1
Birth Rate per 1,000 Population	14.0	13.4	14.3
Total Fertility Rate (%)	1.7	1.6	1.8
Brunei Citizens	1.9	1.8	1.9
Permanent Residents	1.2	1.1	1.1
Temporary Residents	1.2	1.2	1.5



	2018	2019	2020
--	------	------	------

Life Expectancy at Birth (Years)	77.5	77.4	79.4
---	-------------	-------------	-------------

Male	76.4	76.4	78.0
------	------	------	------

Female	78.5	78.4	80.7
--------	------	------	------

Registered Deaths (Number)	1,612	1,760	1,752
-----------------------------------	--------------	--------------	--------------

Male	878	965	982
------	-----	-----	-----

Female	734	795	770
--------	-----	-----	-----

Death Rate per 1,000 Population	3.6	3.8	3.9
---------------------------------	-----	-----	-----

Infant Mortality Rate per 1,000 Live Births	9.0	8.4	8.3
---	-----	-----	-----

Under 5 Mortality Rate per 1,000 Live Births	10.8	9.7	9.2
--	------	-----	-----



	2019	2020	2021
--	------	------	------

Total Marriages (Number)	2,831	3,664	2,783
---------------------------------	--------------	--------------	--------------

Marriages by Type

Muslim	2,613	3,464	2,679
--------	-------	-------	-------

Civil	135	129	69
-------	-----	-----	----

Customary and Others	83	71	35
----------------------	----	----	----

Marriages by District

Brunei Muara	1,971	2,566	1,985
--------------	-------	-------	-------

Belait	392	477	354
--------	-----	-----	-----

Tutong	264	442	321
--------	-----	-----	-----

Temburong	70	116	107
-----------	----	-----	-----

Outside Brunei	134	63	16
----------------	-----	----	----

Median Age at First Marriage (Years)

Groom	27.2	27.1	26.9
-------	------	------	------

Bride	25.9	25.6	25.6
-------	------	------	------



2019 2020 2021

Total Divorces (Number) 638 617 433

Divorces by Type

Muslim	624	583	397
Civil	14	34	36

Divorces by District

Brunei Muara	473	414	312
Belait	82	105	57
Tutong	73	90	56
Temburong	8	7	7
Outside Brunei	2	1	1



2019 2020 2021

By Sector at Current Prices (BND Million)

Oil and Gas Sector	10,415.3	7,995.3	9,330.7
Non Oil and Gas Sector	8,268.2	8,867.5	9,789.9
Government Sector	3,036.3	2,902.7	2,968.8
Private Sector	5,231.9	5,964.8	6,821.1

Gross Value Added 18,683.5 16,862.8 19,120.6

Taxes Less Subsidies on Products -308.5 -298.4 -298.6

Gross Domestic Product 18,375.0 16,564.4 18,822.0

Per Capita at Current Prices (BND) 39,989.1 36,517.7 43,772.3

By Sector at Current Prices (% Share)

Oil and Gas Sector	55.7	47.4	48.8
Non Oil and Gas Sector	44.3	52.6	51.2
Government Sector	16.3	17.2	15.5
Private Sector	28.0	35.4	35.7

Gross Value Added 100.0 100.0 100.0



2019 2020 2021

By Sector at Constant Prices (BND Million)

Oil and Gas Sector	10,897.5	10,360.2	9,859.5
Non Oil and Gas Sector	8,562.0	9,319.8	9,507.5
Government Sector	3,031.2	2,892.3	2,934.4
Private Sector	5,530.8	6,427.5	6,573.1
Gross Value Added	19,459.4	19,680.0	19,367.0
Taxes Less Subsidies on Products	-360.9	-365.9	-359.1
Gross Domestic Product	19,098.5	19,315.0	19,007.8

Growth Rate (%) at Constant Prices

Oil and Gas Sector	3.9	-4.9	-4.8
Non Oil and Gas Sector	3.9	8.9	2.0
Government Sector	1.3	-4.6	1.5
Private Sector	5.4	16.2	2.3
Gross Value Added	3.9	1.1	-1.6
Gross Domestic Product	3.9	1.1	-1.6



2019 2020 2021

By Kind of Economic Activity at Current Prices (BND Million)

Agriculture, Forestry and Fishery	181.2	201.7	236.5
Vegetables, Fruits & Other Agriculture	26.2	26.0	28.0
Livestock and Poultry	63.0	69.2	79.3
Forestry	32.7	25.5	26.3
Fishery	59.3	80.9	102.9

Industry Sector	11,487.2	9,795.2	11,801.7
Oil and Gas Mining	8,343.6	6,514.8	7,667.6
Manufacture of LNG and Other Petroleum & Chemical Products	2,298.0	2,401.6	3,245.0
Manufacture of Wearing Apparel & Textiles	31.6	27.9	31.0
Manufacture of Food and Beverage Products	26.0	32.3	40.4
Other Manufacturing	143.7	150.3	168.4
Electricity and Water	187.6	184.1	189.5
Construction	456.6	484.1	459.8



2019 2020 2021

By Kind of Economic Activity at Current Prices (BND Million) (Cont'd)

Services Sector	7,015.1	6,866.0	7,082.5
Wholesale and Retail Trade	942.1	988.8	1,065.4
Land Transport	10.5	8.2	9.4
Water Transport	173.6	187.1	172.8
Air Transport	53.9	13.3	12.5
Other Transport Services	87.5	67.4	71.5
Communication	257.6	315.6	334.5
Finance	989.5	927.5	935.3
Real Estate and Ownership of Dwellings	640.5	627.5	618.0
Hotels	24.7	17.8	18.6
Restaurants	184.0	174.2	187.1
Health Services	291.1	300.0	312.5
Education Services	614.9	530.4	530.4
Business Services	380.9	407.5	438.0
Domestic Services	81.7	85.0	86.8
Other Private Services	97.0	92.8	93.5



2019 2020 2021

By Kind of Economic Activity at Current Prices (BND Million) (Cont'd)

Services Sector (Cont'd)			
Government Services/Public Administration	2,185.6	2,123.0	2,196.0
Gross Value Added	18,683.5	16,862.8	19,120.6
Taxes Less Subsidies on Products	-308.5	-298.4	-298.6
Gross Domestic Product	18,375.0	16,564.4	18,822.0



2019 2020 2021

By Kind of Economic Activity at Current Prices (% Share)

Agriculture, Forestry and Fishery	1.0	1.2	1.2
Vegetables, Fruits & Other Agriculture	0.1	0.2	0.1
Livestock and Poultry	0.3	0.4	0.4
Forestry	0.2	0.2	0.1
Fishery	0.3	0.5	0.5

Industry Sector	61.5	58.1	61.7
Oil and Gas Mining	44.7	38.6	40.1
Manufacture of LNG and Other Petroleum & Chemical Products	12.3	14.2	17.0
Manufacture of Wearing Apparel & Textiles	0.2	0.2	0.2
Manufacture of Food and Beverage Products	0.1	0.2	0.2
Other Manufacturing	0.8	0.9	0.9
Electricity and Water	1.0	1.1	1.0
Construction	2.4	2.9	2.4



2019 2020 2021

By Kind of Economic Activity at Current Prices (% Share) (Cont'd)

Services Sector	37.5	40.7	37.0
Wholesale and Retail Trade	5.0	5.9	5.6
Land Transport	0.1	0.0	0.0
Water Transport	0.9	1.1	0.9
Air Transport	0.3	0.1	0.1
Other Transport Services	0.5	0.4	0.4
Communication	1.4	1.9	1.7
Finance	5.3	5.5	4.9
Real Estate and Ownership of Dwellings	3.4	3.7	3.2
Hotels	0.1	0.1	0.1
Restaurants	1.0	1.0	1.0
Health Services	1.6	1.8	1.6
Education Services	3.3	3.1	2.8
Business Services	2.0	2.4	2.3
Domestic Services	0.4	0.5	0.5
Other Private Services	0.5	0.6	0.5



	2019	2020	2021
--	------	------	------

By Kind of Economic Activity at Current Prices (% Share) (Cont'd)
Services Sector (Cont'd)

Government Services/Public Administration	11.7	12.6	11.5
---	------	------	------

Gross Value Added	100.0	100.0	100.0
--------------------------	--------------	--------------	--------------



	2019	2020	2021
--	------	------	------

By Kind of Economic Activity at Constant Prices (BND Million)

Agriculture, Forestry and Fishery	146.3	167.4	195.7
--	--------------	--------------	--------------

Vegetables, Fruits & Other Agriculture	22.8	22.7	20.0
--	------	------	------

Livestock and Poultry	62.8	69.4	82.9
-----------------------	------	------	------

Forestry	13.6	10.4	10.4
----------	------	------	------

Fishery	47.0	64.9	82.4
---------	------	------	------

Industry Sector	12,055.2	12,405.9	11,889.0
------------------------	-----------------	-----------------	-----------------

Oil and Gas Mining	8,256.9	7,851.6	7,616.7
--------------------	---------	---------	---------

Manufacture of LNG and Other Petroleum & Chemical Products	2,914.1	3,669.7	3,371.3
--	---------	---------	---------

Manufacture of Wearing Apparel & Textiles	34.2	28.1	32.4
---	------	------	------

Manufacture of Food and Beverage Products	25.5	30.9	38.0
---	------	------	------

Other Manufacturing	142.3	132.0	159.8
---------------------	-------	-------	-------

Electricity and Water	192.6	188.4	194.2
-----------------------	-------	-------	-------

Construction	489.6	505.2	476.7
--------------	-------	-------	-------



2019 2020 2021

By Kind of Economic Activity at Constant Prices (BND Million) (Cont'd)

Services Sector	7,257.9	7,106.7	7,282.3
Wholesale and Retail Trade	986.7	1,014.3	1,057.5
Land Transport	10.6	5.4	6.2
Water Transport	173.9	187.1	172.8
Air Transport	86.9	21.0	16.8
Other Transport Services	96.5	75.0	75.5
Communication	290.7	337.0	351.7
Finance	1,008.3	980.2	996.2
Real Estate and Ownership of Dwellings	767.7	786.7	804.2
Hotels	24.6	20.0	25.0
Restaurants	176.6	168.0	176.9
Health Services	287.6	295.8	308.8
Education Services	578.2	517.2	516.3
Business Services	384.7	404.0	428.3
Domestic Services	82.5	84.2	85.9
Other Private Services	95.0	89.8	90.2



2019 2020 2021

By Kind of Economic Activity at Constant Prices (BND Million) (Cont'd)

Services Sector (Cont'd)			
Government Services/Public Administration	2,207.4	2,121.0	2,170.1
Gross Value Added	19,459.4	19,680.0	19,367.0
Taxes Less Subsidies on Products	-360.9	-365.0	-359.1
Gross Domestic Product	19,098.5	19,315.0	19,007.8



	2019	2020	2021
--	------	------	------

Growth Rate (%) by Kind of Economic Activity at Constant Prices

Agriculture, Forestry and Fishery	-1.4	14.4	16.9
Vegetables, Fruits & Other Agriculture	-7.3	-0.8	-11.9
Livestock and Poultry	-2.9	10.5	19.3
Forestry	22.7	-23.6	0.2
Fishery	-1.9	38.0	27.1

Industry Sector	4.2	2.9	-4.2
Oil and Gas Mining	3.9	-4.9	-3.0
Manufacture of LNG and Other Petroleum & Chemical Products	7.1	25.9	-8.1
Manufacture of Wearing Apparel & Textiles	-6.7	-17.8	15.2
Manufacture of Food and Beverage Products	-3.5	20.9	23.0
Other Manufacturing	-11.1	-7.3	21.0
Electricity and Water	4.1	-2.2	3.1
Construction	-0.5	3.2	-5.6



	2019	2020	2021
--	------	------	------

Growth Rate (%) by Kind of Economic Activity at Constant Prices (Cont'd)

Services Sector	3.4	-2.1	2.5
Wholesale and Retail Trade	7.3	2.8	4.3
Land Transport	-5.4	-48.8	14.7
Water Transport	5.8	7.6	-7.6
Air Transport	8.5	-75.8	-20.1
Other Transport Services	6.0	-22.3	0.7
Communication	0.1	15.9	4.4
Finance	7.2	-2.8	1.6
Real Estate and Ownership of Dwellings	2.6	2.5	2.2
Hotels	12.4	-18.4	24.7
Restaurants	6.5	-4.9	5.3
Health Services	7.4	2.8	4.4
Education Services	3.6	-10.5	-0.2
Business Services	-4.2	5.0	6.0
Domestic Services	2.0	2.0	2.0
Other Private Services	1.5	-5.4	0.4



	2019	2020	2021
--	------	------	------

Growth Rate (%) by Kind of Economic Activity at Constant Prices (Cont'd)
Services Sector (Cont'd)

Government Services/Public Administration	1.2	-3.9	2.3
---	-----	------	-----

Gross Value Added	3.9	1.1	-1.6
--------------------------	------------	------------	-------------

Gross Domestic Product	3.9	1.1	-1.6
-------------------------------	------------	------------	-------------



	2019	2020	2021
--	------	------	------

By Type of Expenditure at Current Prices (BND Million)

Government Final Consumption Expenditure	4,601.2	4,212.5	4,225.2
--	---------	---------	---------

Household Final Consumption Expenditure	3,761.9	3,935.6	4,637.9
---	---------	---------	---------

Gross Capital Formation	7,107.0	6,723.1	5,886.1
-------------------------	---------	---------	---------

Gross Fixed Capital Formation	7,075.7	6,688.3	5,850.7
-------------------------------	---------	---------	---------

Private	6,711.5	6,455.7	5,710.0
---------	---------	---------	---------

Government	364.2	232.6	140.7
------------	-------	-------	-------

Change in Inventories	31.4	34.8	35.4
-----------------------	------	------	------

Exports of Goods and Services	10,647.6	9,500.7	15,089.4
-------------------------------	----------	---------	----------

Goods	9,804.7	9,026.5	14,820.1
-------	---------	---------	----------

Services	842.8	474.2	269.3
----------	-------	-------	-------

Imports of Goods and Services	9,291.1	8,768.4	12,602.1
-------------------------------	---------	---------	----------

Goods	6,819.6	7,115.8	11,396.9
-------	---------	---------	----------

Services	2,471.5	1,652.6	1,205.2
----------	---------	---------	---------

Statistical Discrepancy	1,548.3	960.8	1,585.6
-------------------------	---------	-------	---------



2019 2020 2021

By Type of Expenditure at Current Prices (% Share)	100.0	100.0	100.0
Government Final Consumption Expenditure	25.0	25.4	22.4
Household Final Consumption Expenditure	20.5	23.8	24.5
Gross Capital Formation	38.7	40.6	31.3
Gross Fixed Capital Formation	38.5	40.4	31.1
Private	36.5	39.0	30.3
Government	2.0	1.4	0.7
Change in Inventories	0.2	0.2	0.2
Exports of Goods and Services	57.9	57.4	80.2
Goods	53.4	54.5	78.7
Services	4.6	2.9	1.4
Imports of Goods and Services	50.6	52.9	67.0
Goods	37.1	43.0	60.6
Services	13.5	10.0	6.4
Statistical Discrepancy	8.4	5.8	8.6



2019 2020 2021

By Type of Expenditure at Constant Prices (BND Million)	19,098.5	19,315.0	19,007.8
Government Final Consumption Expenditure	4,629.1	4,186.9	4,291.2
Household Final Consumption Expenditure	3,789.6	3,986.5	4,390.4
Gross Capital Formation	7,542.9	6,844.2	5,898.5
Gross Fixed Capital Formation	7,509.9	6,808.3	5,863.7
Private	7,118.9	6,576.5	5,720.1
Government	391.0	231.8	143.6
Change in Inventories	33.0	35.9	34.7
Exports of Goods and Services	11,837.0	12,727.8	13,843.1
Goods	10,976.1	12,254.9	13,577.4
Services	860.9	472.9	265.7
Imports of Goods and Services	8,925.1	8,741.7	11,317.3
Goods	6,402.5	7,091.2	10,127.6
Services	2,522.6	1,650.5	1,189.7
Statistical Discrepancy	225.0	311.3	1,901.8



	2019	2020	2021
--	------	------	------

Growth Rate (%) by Type of Expenditure at Constant Prices	3.9	1.1	-1.6
Government Final Consumption Expenditure	1.8	-9.6	2.5
Household Final Consumption Expenditure	6.1	5.2	10.1
Gross Capital Formation	-4.4	-9.3	-13.8
Gross Fixed Capital Formation	-4.4	-9.3	-13.9
Private	-2.6	-7.6	-13.0
Government	-28.0	-40.7	-38.0
Change in Inventories	-0.1	8.8	-3.2
Exports of Goods and Services	14.9	7.5	8.8
Goods	15.3	11.7	10.8
Services	9.8	-45.1	-43.8
Imports of Goods and Services	13.8	-2.1	29.5
Goods	12.8	10.8	42.8
Services	16.3	-34.6	-27.9



	2019	2020	2021
--	------	------	------

Gross Value Added by Income at Current Prices (BND Million)	18,683.5	16,862.8	19,120.6
Compensation of Employees	5,468.7	5,529.8	5,641.7
Consumption of Fixed Capital	877.8	867.3	927.8
Other Taxes on Production	14.8	14.8	15.1
Net Operating Surplus/ Mixed Income	12,322.2	10,450.9	12,536.1
Gross Value Added Share (%) by Income at Current Prices	100.0	100.0	100.0
Compensation of Employees	29.3	32.8	29.5
Consumption of Fixed Capital	4.7	5.1	4.9
Other Taxes on Production	0.1	0.1	0.1
Net Operating Surplus/ Mixed Income	66.0	62.0	65.6



	2019	2020	2021
--	------	------	------

International Merchandise Trade Statistics (BND Million)

Exports f.o.b.	9,886.2	9,121.8	14,133.8
Imports c.i.f.	6,956.9	7,338.6	9,721.7
Total Trade	16,843.1	16,460.4	23,855.5
Trade Balance	2,929.3	1,783.2	4,412.1

Annual Change (%)

Exports f.o.b.	11.4	-7.7	54.9
Imports c.i.f.	23.7	5.5	32.5



	2019	2020	2021
--	------	------	------

Exports by Commodity Section (BND Million)

Food	13.9	14.0	52.2
Beverages and Tobacco	0.1	0.1	0.2
Crude Materials, Inedible	32.5	8.6	40.8
Mineral Fuels	9,031.4	7,435.5	11,037.2
Animal and Vegetable Oils and Fats	0.4	0.1	0.9
Chemicals	337.0	1,524.6	2,608.7
Manufactured Goods	82.0	22.4	43.0
Machinery and Transport Equipment	311.9	68.9	289.0
Miscellaneous Manufactured Articles	68.5	29.9	41.4
Miscellaneous Transactions	8.4	17.7	20.3
Total	9,886.2	9,121.8	14,133.8



	2019	2020	2021
--	------	------	------

Exports by Trading Partners (BND Million)

ASEAN	3,390.0	3,665.8	4,497.5
Cambodia	0.0	0.0	0.0
Indonesia	52.4	99.3	218.4
Lao PDR	0.0	0.0	-
Malaysia	834.5	702.9	737.6
Myanmar	0.0	0.0	0.1
Philippines	162.5	200.9	504.9
Singapore	1,315.2	1,943.9	1,973.3
Thailand	753.6	405.4	695.8
Viet Nam	271.7	313.4	367.3
European Union	30.4	2.5	6.6
France	0.9	0.1	0.2
Germany	3.2	0.9	1.0
Italy	0.5	1.4	1.7
Netherlands	0.0	-	3.3
United Kingdom	25.4	-	-
Others	0.4	0.1	0.4



	2019	2020	2021
--	------	------	------

Exports by Trading Partners (BND Million) (Cont'd)

Other Trading Partners	6,465.8	5,453.5	9,629.7
Australia	976.6	458.4	2,420.7
People's Republic of China	583.3	1,613.4	2,959.6
Hong Kong SAR	35.1	2.8	154.3
Japan	3,298.7	2,335.0	2,954.3
Republic of Korea	460.7	196.2	112.4
Taiwan	186.0	122.2	161.4
United Kingdom	-	5.7	18.5
USA	50.1	105.1	38.5
Others	875.3	614.7	810.0
Total	9,886.2	9,121.8	14,133.8



	2019	2020	2021
--	------	------	------

Exports of Crude Oil by Trading Partners (BND Million)

Australia	878.8	194.4	951.0
India	816.4	464.7	583.2
Indonesia	-	21.1	-
Japan	188.8	34.1	139.6
Republic of Korea	203.9	93.2	-
Malaysia (Peninsular)	28.6	68.9	136.8
Singapore	684.6	396.1	493.6
Thailand	723.9	299.5	535.3
Viet Nam	229.9	113.1	-
Others	137.1	72.1	56.3

Total	3,892.0	1,757.3	2,895.8
--------------	----------------	----------------	----------------

Exports of Liquefied Natural Gas by Trading Partners (BND Million)

Japan	3,098.2	2,161.9	2,704.6
Republic of Korea	249.3	86.9	64.1
Malaysia	-	401.5	159.5
Others	976.0	276.6	555.7

Total	4,323.5	2,926.9	3,483.9
--------------	----------------	----------------	----------------



	2019	2020	2021
--	------	------	------

Imports by Commodity Section (BND Million)

Food	616.9	707.8	733.4
Beverages and Tobacco	56.9	59.4	66.3
Crude Materials, Inedible	32.0	23.5	83.1
Mineral Fuels	2,341.6	2,679.6	5,832.3
Animal and Vegetable Oils and Fats	16.9	21.1	25.7
Chemicals	489.4	669.3	578.5
Manufactured Goods	965.0	827.1	547.5
Machinery and Transport Equipment	2,048.3	1,944.5	1,422.2
Miscellaneous Manufactured Articles	379.7	404.8	425.9
Miscellaneous Transactions	10.1	1.6	6.8

Total	6,956.9	7,338.6	9,721.7
--------------	----------------	----------------	----------------



2019

2020

2021

Imports by Trading Partners (BND Million)

ASEAN	2,233.7	2,801.8	3,454.3
Cambodia	26.8	20.2	14.2
Indonesia	178.3	214.0	378.1
Lao PDR	0.0	0.0	0.0
Malaysia	825.2	1,311.1	2,142.6
Myanmar	0.9	1.0	0.8
Philippines	11.7	12.2	41.8
Singapore	872.5	1,039.3	690.5
Thailand	160.9	174.9	126.0
Viet Nam	157.3	29.0	60.3
European Union	863.1	373.2	257.1
France	35.2	32.5	18.3
Germany	440.5	197.3	118.0
Italy	118.2	79.5	43.1
Netherlands	29.6	22.1	22.9
United Kingdom	170.4	-	-
Others	69.2	41.8	54.9



2019

2020

2021

Imports by Trading Partners (BND Million) (Cont'd)

Other Trading Partners	3,860.0	4,163.6	6,010.3
Australia	57.4	407.6	585.1
People's Republic of China	914.8	792.9	798.0
Hong Kong SAR	48.2	35.6	46.8
Japan	281.7	231.9	199.4
Republic of Korea	128.9	151.0	66.6
Taiwan	22.9	116.8	39.3
United Kingdom	-	479.8	93.8
USA	440.3	407.2	297.3
Others	1,965.8	1,540.8	3,883.9
Total	6,956.9	7,338.6	9,721.7



2019

2020

2021

Total Foreign Direct Investment Flows (BND Million)

By Component

Equity Investment	-41.1	216.5	312.1
Debts Instrument	552.1	580.2	-37.0
Total	511.0	796.7	275.1

By Economic Activities

Mining and Quarrying	-228.4	-93.8	-110.1
Manufacturing	648.2	877.2	315.8
Construction	-35.3	-8.9	18.1
Wholesale and Retail Trade	-9.9	-9.4	8.3
Financial and Insurance Activities	40.6	18.3	53.2
Other Activities	95.7	13.3	-10.1
Total	511.0	796.7	275.1



2019

2020

2021

Total Foreign Direct Investment Flows (BND Million)

By Country

ASEAN	-24.4	5.6	58.9
Malaysia	-5.8	-18.8	1.6
Singapore	-19.2	26.7	58.2
Others	0.5	-2.3	-0.9
European Union	-367.1	-85.9	61.2
Germany	-1.7	-0.4	0.4
Netherlands	-99.1	-85.5	60.0
Others	-266.2	-0.0	0.8
Other Countries	902.5	877.0	155.0
Hong Kong SAR	763.0	740.6	280.4
Japan	-28.9	186.7	30.9
United Kingdom	-	-79.0	-224.7
USA	0.5	1.2	0.6
Others	167.8	27.6	67.8
Total	511.0	796.7	275.1



2019

2020

2021

Total Foreign Direct Investment Stock (BND Million)

By Component

Equity Investment	7,791.3	7,993.7	8,019.4
Debts Instrument	1,828.7	2,139.1	1,921.8
Total	9,620.0	10,132.8	9,941.2

By Economic Activities

Mining and Quarrying	4,816.4	4,290.4	4,047.3
Manufacturing	3,299.5	4,002.6	4,128.8
Construction	26.0	78.3	38.4
Wholesale and Retail Trade	133.5	145.6	156.7
Financial and Insurance Activities	958.3	1,037.7	1,045.0
Other Activities	386.3	578.2	524.8
Total	9,620.0	10,132.8	9,941.2



2019

2020

2021

Total Foreign Direct Investment Stock (BND Million)

By Country

ASEAN	163.0	772.1	633.9
Malaysia	-188.5	250.1	242.5
Singapore	343.9	516.7	387.0
Others	7.6	5.3	4.4
European Union	5,609.2	1,190.8	1,049.6
Germany	15.3	15.0	15.5
Netherlands	1,436.9	1,141.1	1,008.5
Others	4,157.0	34.7	25.5
Other Countries	3,847.8	8,169.9	8,257.7
Hong Kong SAR	2,741.1	3,533.2	3,498.7
Japan	214.0	346.3	426.9
United Kingdom	-	3,482.1	3,193.4
USA	3.2	4.9	25.5
Others	889.5	803.5	1,113.2
Total	9,620.0	10,132.8	9,941.2



Consumer Price Index (Jan 2015=100)

Major Groups	Weights
Food and Non-Alcoholic Beverages	1,883
Clothing and Footwear	403
Housing, Water, Electricity, Gas and Other Fuels	1,170
Furnishing, Household Equipment and Routine Household Maintenance	702
Health	91
Transport	1,961
Communication	594
Recreation and Culture	664
Education	696
Restaurants and Hotels	1,069
Miscellaneous Goods and Services	767
Total	10,000



2019 2020 2021

All Groups (Index)	99.0	100.9	102.7
Food and Non-Alcoholic Beverages	101.7	104.3	106.8
Clothing and Footwear	98.4	100.0	99.5
Housing, Water, Electricity, Gas and Other Fuels	93.5	93.2	93.0
Furnishing, Household Equipment and Routine Household Maintenance	99.8	101.6	100.5
Health	101.1	101.6	102.5
Transport	93.9	95.0	101.3
Communication	99.4	99.5	100.1
Recreation and Culture	103.4	103.4	103.8
Education	103.1	105.1	105.3
Restaurants and Hotels	103.1	103.7	104.5
Miscellaneous Goods and Services	99.3	110.1	110.5
Inflation Rate (%)	-0.4	1.9	1.7



	2019	2020	2021
--	------	------	------

Average Production

Oil (Kbbl/d)	121	110	107
Natural Gas (Kboe/d)	240	231	214

Average Exports

Oil (Kbbl/d)	116	77	81
LNG (MMBtu/d)	915,944	880,305	778,231

Average Price of Exports

Oil (USD/Barrel)	68.57	43.32	72.07
LNG (USD/MMBtu)	9.14	6.66	9.12



	2019	2020	2021
--	------	------	------

Domestic Consumption (Thousand m³)

Motor Gasoline (Mogas)	368.22	340.65	321.32
Premium RON 97	323.25	297.78	281.23
Super RON 92	1.46	0.85	0.68
Regular RON 85	43.52	42.02	39.41
Diesel	307.52	278.68	277.79
V-Power Mogas	...	9.51	6.62
V-Power Diesel	...	1.54	1.19
Kerosene	3.79	5.78	5.25
Jet A-1	132.84	46.69	21.65
Liquefied Petroleum	34.82	34.77	33.22
Gas	1,510,945.56	1,707,857.22	1,827,007.50



	2019	2020	2021
--	------	------	------

End of Period:
Monetary Aggregates (BND Million)

Narrow Money	4,558	5,504	5,861
--------------	-------	-------	-------

Quasi Money	11,009	9,997	10,058
-------------	--------	-------	--------

Broad Money	15,567	15,500	15,920
--------------------	---------------	---------------	---------------

Currency in Circulation (BND Million)

Gross Circulation	1,228	1,358	1,431
-------------------	-------	-------	-------

Active Circulation	1,010	1,241	1,328
--------------------	-------	-------	-------



	2019	2020	2021
--	------	------	------

End of Period:
Banking System : Assets (BND Million)

Notes and Coins Held	181	186	182
----------------------	-----	-----	-----

Balances with BDCB, including Minimum Cash Balance	2,113	1,503	2,519
---	-------	-------	-------

Amount Due from Banks and Financial Institutions:

In Brunei Darussalam	551	763	742
----------------------	-----	-----	-----

Outside Brunei Darussalam	7,457	6,673	6,046
---------------------------	-------	-------	-------

Loan and Advances/Financing (Net)	5,707	5,659	5,951
--------------------------------------	-------	-------	-------

Investments	2,295	3,120	3,477
-------------	-------	-------	-------

Other Assets	457	369	445
--------------	-----	-----	-----

Total Assets	18,759	18,272	19,362
---------------------	---------------	---------------	---------------



	2019	2020	2021
--	------	------	------

End of Period:**Banking System : Liabilities (BND Million)****Deposits (Non-bank Customers):**

Demand	4,535	4,596	5,926
Savings	4,002	4,595	4,559
Time	6,346	5,089	5,502
Others	766	82	92

Amount Due to Banks:

In Brunei Darussalam	120	204	163
Outside Brunei Darussalam	291	1,014	378
Others (Capital Funds and Other Liabilities)	2,699	2,692	2,742

Total Liabilities	18,759	18,272	19,362
--------------------------	---------------	---------------	---------------



	2019	2020	2021
--	------	------	------

Brunei Dollar to 1 unit:**US Dollar**

Period Average	1.36	1.38	1.34
End of Period	1.35	1.32	1.35

Brunei Dollar to 1 unit:**End of Period:**

Australian Dollar	0.94	1.02	0.98
Sterling Pound	1.78	1.81	1.82
Euro	1.51	1.61	1.53



	2019	2020	2021
--	------	------	------

Brunei Dollar to 100 units:**End of Period:**

Malaysian Ringgit	32.89	32.86	32.39
Hongkong Dollar	17.27	17.04	17.30
Indonesian Rupiah	0.01	0.01	0.01
Japanese Yen	1.24	1.28	1.17
Philippine Peso	2.66	2.75	2.64
Saudi Riyal	35.88	35.22	35.90
Swiss Franc	138.90	149.30	147.84
Thai Baht	4.53	4.41	4.06



CALENDAR YEAR	2019	2020	2021 ^p
---------------	------	------	-------------------

Total Government Revenue (BND Million)	5,282.2	2,892.4	3,975.0
---	----------------	----------------	----------------

Oil and Gas Revenue	4,076.9	1,727.8	3,211.1
----------------------------	----------------	----------------	----------------

Revenue from Government Operations	1,047.3	745.9	682.7
---	----------------	--------------	--------------

Taxes	350.2	346.7	340.7
-------	-------	-------	-------

Fees, Charges and Rent	615.9	347.4	312.4
------------------------	-------	-------	-------

Others	81.2	51.8	29.5
--------	------	------	------

Return from Investments and Savings	157.9	418.7	64.7
--	--------------	--------------	-------------

Excess Revenue - Statutory bodies	-	-	16.5
--	----------	----------	-------------

Total Government Expenditure (BND Million)	5,960.0	5,505.3	5,484.5
---	----------------	----------------	----------------

Charged Expenditure	1,269.1	1,094.2	1,224.5
----------------------------	----------------	----------------	----------------

Ordinary Expenditure	4,251.1	4,131.1	4,090.6
-----------------------------	----------------	----------------	----------------

Personnel Emoluments	1,961.6	1,967.5	1,988.7
----------------------	---------	---------	---------

Other Charges Annually Recurrent	2,289.5	2,163.6	2,101.9
----------------------------------	---------	---------	---------

Development Expenditure	439.8	280.0	169.4
--------------------------------	--------------	--------------	--------------

Fiscal Balance	-677.8	-2,612.9	-1,509.5
-----------------------	---------------	-----------------	-----------------



FISCAL YEAR	2019/20	2020/21	2021/22 ^p
Total Government Revenue (BND Million)	4,845.7	2,051.0	4,749.1
Oil and Gas Revenue	3,645.6	1,242.6	4,004.2
Revenue from Government Operations	760.2	706.4	672.1
Taxes	354.9	340.5	348.0
Fees, Charges and Rent	364.0	312.3	306.8
Others	41.4	53.6	17.2
Return from Investments and Savings	439.8	101.9	56.3
Excess Revenue - Statutory bodies	-	-	16.5
Total Government Expenditure (BND Million)	5,873.1	5,292.4	5,686.4
Charged Expenditure	1,275.8	1,062.1	1,283.9
Ordinary Expenditure	4,156.0	4,023.7	4,191.7
Personnel Emoluments	1,965.4	1,969.1	1,984.1
Other Charges Annually Recurrent	2,190.6	2,054.6	2,207.6
Development Expenditure	441.3	206.6	210.8
Fiscal Balance	-1,027.4	-3,241.4	-937.3



	2019	2020	2021
Educational Institutions (Number) ⁽²⁾	251	252	256
Government Schools	175	175	176
Pre-Primary (Pre-School)/Primary	122	122	121
Secondary/Sixth Form (Pre-University)	39	39	41
Technical/Vocational	9	9	9
Tertiary	5	5	5
Private Schools	76	77	80
Pre-Primary (Pre-School)/Primary/Secondary/Sixth Form (Pre-University)	71	72	73
Technical/Vocational	3	3	4
Tertiary	2	2	3



2019 2020 2021

Teachers (Persons)	10,942	11,282	10,824
Government Schools	8,532	8,864	8,359
Pre-Primary (Pre-School)	270	157	237
Primary	2,873	3,105	2,836
Secondary/Sixth Form (Pre-University)	4,152	4,367	4,087
Technical/Vocational	492	464	413
Tertiary	745	771	786
Private Schools	2,410	2,418	2,465
Pre-Primary (Pre-School)	612	597	676
Primary	1,141	1,153	1,147
Secondary/Sixth Form (Pre-University)	525	531	503
Technical/Vocational	53	64	51
Tertiary	79	73	88



2019 2020 2021

Students (Persons)	107,166	105,762	105,812
Government Schools	72,197	70,814	71,323
Pre-Primary (Pre-School)	2,992	3,032	2,486
Primary	23,016	23,318	23,078
Secondary	28,177	27,155	26,850
Sixth Form (Pre-University)	4,055	3,519	3,998
Technical/Vocational	3,862	3,694	4,053
Tertiary	10,095	10,096	11,002
Private Schools	34,969	34,948	34,489
Pre-Primary (Pre-School)	10,416	10,219	9,679
Primary	16,220	16,331	16,439
Secondary	5,489	5,551	5,603
Sixth Form (Pre-University)	421	440	470
Technical/Vocational	1,115	1,302	1,241
Tertiary	1,308	1,105	1,057



	2019	2020	2021
--	------	------	------

Male Student per 100 Female Student

Pre-Primary (Pre-School)	106	108	108
Primary	106	106	106
Secondary	106	107	108
Sixth Form (Pre-University)	74	68	68
Technical/Vocational	113	109	128
Tertiary	70	69	71

	2018	2019	2020
--	------	------	------

Literacy Rate (%) Aged 10 and Above

Total	97.1	97.2	97.3
Male	98.1	98.2	98.2
Female	96	96.1	96.2



	2019	2020	2021
--	------	------	------

Medical Institutions (Number)

Hospital	7	7	7
Medical Centre	9	9	9
Health Centre	15	15	15
Health Clinic	17	17	17
Beds in Hospital	1,622	1,716	1,724

Medical Personnels (Persons)

Medical Doctor	828	948	1,038
Dentists	96	114	118
Nurses	2,507	2,419	2,775
Pharmacists	81	88	88
Midwives	330	358	379

	555	478	414
--	-----	-----	-----

Population per Medical Doctor



	2019	2020	2021 ^P
Leading Causes of Deaths	1,760	1,752	1,623
Cancer	334	352	312
Heart Diseases (Including Acute Rheumatic Fever)	276	239	213
Diabetes Mellitus	172	177	169
Cerebrovascular Diseases	162	146	161
Hypertensive Diseases	73	66	68
Septicaemia	53	59	88
Bronchitis, Chronic and Unspecified Emphysema and Asthma	47	42	36
Influenza and Pneumonia	44	39	28
Certain Conditions Originating In The Perinatal Period	32	39	21
Other Diseases	567	593	527



	2019	2020 ^r	2021
Length of Road (Kilometre)	3,709.2	3,772.3	3,787.9
Land Transport			
Newly Registered Vehicles (Number)	12,258	14,813	13,886
Private Cars	11,383	14,005	13,149
Taxi	112	4	-
Goods Vehicles	321	240	311
Buses	92	17	25
Motorcycles/Scooters	309	523	395
Others	41	24	6



	2019	2020	2021
--	------	------	------

Air Transport**Aircraft Movements (Number)**

Scheduled	17,323	5,124	2,012
Non-Scheduled	624	452	632

Passengers (000' Persons)

Inward	921.2	180.7	19.3
Outward	924.5	176.1	28.4
Transit	303.1	66.1	-

Freight (Thousand Kilogramme)

Inward	14,417.5	6,811.5	5,250.2
Outward	8,596.4	3,071.3	1,712.5



	2019	2020	2021
--	------	------	------

Sea Transport ⁽³⁾**Vessels/Boats Licensed (Number)**

Passenger Boats	36	105	12
Vessels	19	3	5
Fishing Vessels	181	28	2
Pleasure Crafts	13	450	448

Seaborne Cargo (Thousand Freight Tonne)

Discharged	1,453.2	1,006.6	954.9
Loaded	116.4	78.8	65.4



	2019	2020	2021
--	------	------	------

Fixed Lines

Number of Fixed Lines (Thousand)	86.6	103.9	112.3
Fixed Line Per 100 Population	18.8	22.9	26.1

Mobile Subscribers (Cumulative)

Postpaid	104,142	99,265	117,335
Prepaid	470,657	437,324	486,151

Mobile Penetration Rate (%)

	125.1	118.3	140.3
--	-------	-------	-------



	2019	2020	2021
--	------	------	------

Internet Subscribers (Number) ⁽⁴⁾

Fixed Broadband	54,376	71,078	79,417
Mobile Broadband	641,739	545,109	609,284

Internet Penetration Rate (%)

Fixed Broadband	11.8	15.7	18.5
Mobile Broadband	139.7	120.2	141.7

Postal

Post Office (Number) ⁽⁵⁾	21	21	21
-------------------------------------	----	----	----

Postal Services (Pieces)

Letter Mails	4,371,026	3,130,361	2,290,359
Printed Matters	124,893	54,884	39,600
Postcards	30,817	6,516	1,429
Registered Articles	244,829	136,382	166,809
Parcels, Small Packets and Others	403,188	164,528	246,385



	2019	2020	2021
--	------	------	------

Electricity

Generation Capacity (MW)	917.2	917.2	899.2
Production (GWh)	4,449.5	4,508.6	4,450.8
Consumption (GWh)	3,828.5	3,936.9	3,950.3
Coverage in Electricity Supply (%)	99.9	99.9	99.9

Water

Production (Thousand m ³)	165,207.8	160,364.5	159,672.7
Consumption (Thousand m ³)	87,522.1	83,319.2	74,841.7
Coverage in Water Supply (%)	99.9	99.9	99.9



	2019	2020	2021
--	------	------	------

Main Crop Production (Metric Tonne)

Rice	1,500.0	2,511.3	2,672.0
Paddy	2,307.6	3,863.6	4,110.7
Vegetable	9,529.6	8,508.0	7,486.1
Fruit	9,816.6	7,214.8	6,273.9

Local and Import Livestock Production**Buffaloes**

Local (Number)	2,292	2,300	1,311
-----------------------	-------	-------	-------

Imports

Live (Number)	1,803	1,038	2,385
---------------	-------	-------	-------

Chilled & Frozen (Metric Tonne)	2,466.0	994.0	-
---------------------------------	---------	-------	---

Slaughtered (Number)	1,926	2,061	3,430
-----------------------------	-------	-------	-------

Dressed Weight (Metric Tonne)	384.8	419.3	699.5
-------------------------------	-------	-------	-------



	2019	2020	2021
Cattles			
Local (Number)	617	583	353
Imports			
Live (Number)	3,108	8,493	15,734
Chilled & Frozen (Metric Tonne)	723.5	332.0	685.7
Slaughtered (Number)	4,752	7,647	13,737
Dressed Weight (Metric Tonne)	1,080.2	1,729.4	3,125.7
Goats			
Local (Number)	5,825	6,110	4,169
Import (Number)	26	1,300	6,793
Slaughtered (Number)	1,768	2,960	4,112
Dressed Weight (Metric Tonne)	30.9	51.8	72.0
Non-Ruminant Local Livestock (Number)	375,275	398,258	581,685

Cattles**Imports****Goats**

	2019	2020	2021
Local and Imported Poultry Production			
Broiler Chickens			
Local ('000 Number)	14,966.2	17,523.5	18,994.0
Imports			
Live ('000 Number)	2,017.2	1,913.5	2,601.8
Chilled & Frozen (Metric Tonne)	1,381.9	288.0	223.9
Slaughtered ('000 Number)	16,389.4	17,576.5	20,391.4
Dressed Weight (Metric Tonne)	24,584.1	26,364.8	30,587.1
Layer Chickens			
Local Chicken Eggs (Million)	159.6	171.9	172.7
Import Chicken Eggs (Million)	-	-	0.8
Fertilized Eggs			
Local (Million)	10.8	10.9	12.0
Import (Million)	6.6	8.6	8.6

Local and Imported Poultry Production**Broiler Chickens****Imports****Layer Chickens****Fertilized Eggs**



	2019	2020	2021
Forestry			
Production			
Round Timber (Thousand m ³)	77.9	60.3	59.3
Sawn Timber (Thousand m ³)	38.4	29.2	29.2
Mangrove Poles (Thousand Pieces)	34.7	29.8	36.1
Charcoal Briquette (Thousand Kg)	276.6	276.4	282.9
Poles (Thousand Pieces)	0.1	2.4	1.9
Wood Components (Thousand m ³)	8.5	8.3	8.2

Forestry**Production**

Round Timber (Thousand m ³)	77.9	60.3	59.3
Sawn Timber (Thousand m ³)	38.4	29.2	29.2
Mangrove Poles (Thousand Pieces)	34.7	29.8	36.1
Charcoal Briquette (Thousand Kg)	276.6	276.4	282.9
Poles (Thousand Pieces)	0.1	2.4	1.9
Wood Components (Thousand m ³)	8.5	8.3	8.2



	2019	2020	2021
Fishery			
Local Production (Metric Tonne)	18,814.5	20,566.8	24,285.9
Capture Industry	13,724.6	13,073.7	15,295.7
Commercial Scale	4,762.1	3,455.7	3,114.9
Small Scale	8,962.5	9,618.1	12,180.7
Aquaculture Industry	974.0	3,501.4	4,771.7
Fish in Cages	366.5	412.6	271.2
Farm Prawn	590.9	3,045.8	4,481.2
Fresh Water Fish	16.5	41.6	17.9
Crab	-	1.4	1.4
Processing Industry	4,115.9	3,991.7	4,218.5
Frozen Seafood Products	2,725.9	3,436.7	3,793.0
Seafood Crackers Products	43.5	36.5	33.1
Value Added Commercial Products	98.9	110.3	108.2
Other Products	1,223.4	388.2	266.4
Small Scale Products	24.2	20.0	18.0

Fishery**Capture Industry**

Commercial Scale	4,762.1	3,455.7	3,114.9
Small Scale	8,962.5	9,618.1	12,180.7

Aquaculture Industry

Fish in Cages	366.5	412.6	271.2
Farm Prawn	590.9	3,045.8	4,481.2
Fresh Water Fish	16.5	41.6	17.9
Crab	-	1.4	1.4

Processing Industry

Frozen Seafood Products	2,725.9	3,436.7	3,793.0
Seafood Crackers Products	43.5	36.5	33.1
Value Added Commercial Products	98.9	110.3	108.2
Other Products	1,223.4	388.2	266.4
Small Scale Products	24.2	20.0	18.0



	2019	2020	2021
--	------	------	------

Road Casualties (Number)

Accidents	4,342	3,997	3,104
Injuries	357	341	343
Deaths	12	11	16

Crime (Number) ⁽⁶⁾

Total Cases	5,466	4,747	4,204
--------------------	--------------	--------------	--------------

Against

Person	661	550	439
Property	2,474	1,819	1,650
Penal Code	1,731	1,675	1,391
Misuse of Drug	439	488	300
Other Enactment	161	215	424



	2019	2020	2021
--	------	------	------

Climate**Mean Temperature (Degree Celcius)**

Mean Maximum	32.4	32.2	32.0
Mean Minimum	24.1	24.3	23.6

Mean Relative Humidity (%)

	2019	2020	2021
--	------	------	------

Total Rainfall (Millimetre)

	2019	2020	2021
--	------	------	------

**Bright Sunshine
(Daily Mean/hours)**

	2019	2020	2021
--	------	------	------

Pensions (Number)**Persons Receiving Old Age
Pension by District**

Brunei Muara	37,312	39,392	38,477
Belait	23,461	24,809	24,488
Tutong	7,537	7,967	7,236
Temburong	5,148	5,388	5,539
	1,166	1,228	1,214



2019 2020 2021

**Number of Arrivals by Purpose of Entry at
Brunei International Airport (Persons)**

Holiday	169,805	24,660	115
Business	34,294	7,151	1,552
Relatives	30,334	6,784	514
Transit	49,648	13,094	41
Exhibition	1,156	83	6
Government	8,051	1,594	605
Others	39,956	8,959	710
Total	333,244	62,325	3,543

- (1) - Excluding Royal Brunei Armed Forces, Royal Brunei Police Force, Gurkha Reserve Unit and daily paid employees.
- (2) - Including schools under Prime Minister's Office, Ministry of Religious Affairs, Ministry of Culture, Youth and Sports and Private Schools.
- (3) - Based on number of licenses issued annually by Maritime and Port Authority of Brunei Darussalam. Fishing vessels comprised of fishing boats owned by company and individual. Starting 2020, fishing boats owned by individual are included under pleasure crafts.
- (4) - Mobile Broadband subscription includes both USB dongle/ MIFI and handset.
- (5) - Postal data handled by the Postal Services Department only.
- (6) - Crime cases handled by the Royal Brunei Police Force and Narcotics Control Bureau only.

f.o.b.	- free on board
c.i.f.	- cost, insurance and freight
e	- Estimate
r	- Revised
p	- Provisional/ Preliminary
USD	- US Dollar
BND	- Brunei Dollar
Kbbl/d	- Thousand Barrels per day
Kboe/d	- Thousand Barrels of Oil Equivalent per day
MMBtu/d	- Million British thermal unit per day
m ³	- Cubic Metre
MW	- Mega Watt
GWh	- Giga Watt hour
-	- Nil
...	- Not Available

Total inside the tables may not tally due to rounding

MINISTRY**DEPARTMENT(S)****PRIME
MINISTER'S OFFICE**

ATTORNEY GENERAL'S CHAMBERS
STATE JUDICIARY DEPARTMENT
PUBLIC SERVICE DEPARTMENT
ROYAL BRUNEI POLICE FORCE
NARCOTICS CONTROL BUREAU
ENERGY DEPARTMENT

**MINISTRY OF FINANCE
AND ECONOMY**

DEPARTMENT OF ECONOMIC PLANNING
AND STATISTICS
TREASURY DEPARTMENT
DARUSSALAM ENTERPRISE (DARe)

**MINISTRY OF HOME
AFFAIRS**

DEPARTMENT OF IMMIGRATION
AND NATIONAL REGISTRATION
DISTRICT OFFICES

MINISTRY OF DEFENCE

DEPARTMENT OF DEVELOPMENT AND
WORK SERVICES

<i>MINISTRY</i>	<i>DEPARTMENT(S)</i>
MINISTRY OF HEALTH	DEPARTMENT OF POLICY AND PLANNING
MINISTRY OF DEVELOPMENT	PUBLIC WORKS DEPARTMENT -DEPARTMENT OF WATER SERVICES -DEPARTMENT OF ROAD
MINISTRY OF EDUCATION	DEPARTMENT OF PLANNING, DEVELOPMENT AND RESEARCH
MINISTRY OF PRIMARY RESOURCES AND TOURISM	AGRICULTURE AND AGRIFOOD DEPARTMENT FORESTRY DEPARTMENT FISHERIES DEPARTMENT TOURISM DEVELOPMENT DEPARTMENT

<i>MINISTRY</i>	<i>DEPARTMENT(S)</i>
MINISTRY OF CULTURE, YOUTH AND SPORTS	COMMUNITY DEVELOPMENT DEPARTMENT
MINISTRY OF TRANSPORT AND INFOCOMMUNICATIONS	DEPARTMENT OF CIVIL AVIATION LAND TRANSPORT DEPARTMENT POSTAL SERVICES DEPARTMENT BRUNEI DARUSSALAM METEOROLOGICAL DEPARTMENT MARITIME AND PORT AUTHORITY OF BRUNEI DARUSSALAM AUTHORITY FOR INFO-COMMUNICATIONS TECHNOLOGY INDUSTRY OF BRUNEI DARUSSALAM (AITI)
OTHER AGENCIES	BRUNEI DARUSSALAM CENTRAL BANK (BDCB) TABUNG AMANAH PEKERJA (TAP) BRUNEI INSURANCE AND TAKAFUL ASSOCIATION (BITA)

Department of Statistics
Department of Economic Planning and Statistics
Ministry of Finance and Economy
Brunei Darussalam



673 2233344



@statistics.jpes



<https://deps.mofe.gov.bn>



info.statistics@jpes.gov.bn



**2A, Jalan Ong Sum Ping
Bandar Seri Begawan BA 1311
Negara Brunei Darussalam**

ISBN 978-99917-72-36-3



9 789991 772363